

**TRANSPORT DEPARTMENT NOTICE**

**SPECIAL TRAFFIC AND TRANSPORT ARRANGEMENTS**  
**FOR MID-AUTUMN FESTIVAL 2007**

Notice is hereby given that the following special traffic and transport arrangements will be implemented in connection with the Mid-Autumn Festival 2007.

**I. Special Traffic Arrangements**

**A. Hong Kong Island**

**(1) Traffic Arrangements in Tai Hang for the Fire Dragon Dance**

**(a) Road Closure (Figure 1 refers)**

The following streets in Tai Hang will be closed to all vehicular traffic **from 6.00 p.m. to 11.00 p.m. on 24, 25 and 26 September 2007 daily**, except for access to Tai Hang Residents' Welfare Association and Chinese Recreation Club:

- (i) Lin Fa Kung Street West;
- (ii) Lily Street;
- (iii) Wun Sha Street;
- (iv) Ormsby Street;
- (v) Brown Street;
- (vi) Warren Street;
- (vii) Jones Street;
- (viii) Lai Yin Street;
- (ix) School Street;
- (x) King Street;
- (xi) Shepherd Street; and
- (xii) Sun Chun Street.

**(b) Suspension of Metered Parking Spaces**

All on-street metered parking spaces and parking spaces for motorcycles at the following streets will be suspended **from 4.00 p.m. to 11.00 p.m. on 24, 25 and 26 September 2007 daily**:

- (i) Lin Fa Kung Street West;
- (ii) Lily Street;
- (iii) Wun Sha Street;
- (iv) Ormsby Street;
- (v) Brown Street;
- (vi) Warren Street;
- (vii) Jones Street;
- (viii) Lai Yin Street;
- (ix) School Street;

- (x) King Street;
- (xi) Shepherd Street;
- (xii) Sun Chun Street; and
- (xiii) Tung Lo Wan Road.

(c) Suspension of Taxi Stand

The taxi stand on Tung Lo Wan Road outside House No. 90-96 will be **suspended from 6.00 p.m. to 11.00 p.m. on 24, 25 and 26 September 2007 daily.**

(2) Traffic Arrangements in Causeway Bay (Figure 2 refers)

(a) Part-time Pedestrian Scheme

The following roads will be closed to all vehicular traffic for implementation of a part-time pedestrian scheme from 4.00 p.m. on 25 September 2007 to 3.00 a.m. on 26 September 2007 and from 12.00 noon on 26 September 2007 to 3.00 a.m. on 27 September 2007:

- (i) Lockhart Road east of Cannon Street;
- (ii) East Point Road; and
- (iii) Great George Street west of Paterson Street.

(b) Road Closures and Traffic Diversion

The following roads in Causeway Bay will be closed to all vehicular traffic from 7.00 p.m. on 25 September 2007 to 3.00 a.m. on 26 September 2007 and from 7.00 p.m. on 26 September 2007 to 3.00 a.m. on 27 September 2007 and, subject to crowd dispersal condition, the following roads may also be closed from 7.00 p.m. to 11.59 p.m. on 24 September 2007.

- (i) Sugar Street;
- (ii) Paterson Street between Kingston Street and Great George Street;
- (iii) Inner Gloucester Road between the ramp leading from Causeway Bay Flyover and Causeway Road, except vehicles from Tai Hang Road Flyover heading for Gloucester Road northbound;
- (iv) Kingston Street westbound between Gloucester Road and Paterson Street;
- (v) Hing Fat Street will be closed intermittently to all vehicular traffic,

except franchised buses and green minibuses, depending on actual crowd dispersal situation; and

- (vi) Vehicles from Causeway Bay Flyover heading for Gloucester Road northbound will be diverted to turn right onto Inner Gloucester Road westbound.

The following roads *may* be closed to all vehicular traffic if situation requires:

- (i) Cleveland Street between Gloucester Road and Kingston Street;
- (ii) Kingston Street eastbound between Paterson Street and Inner Gloucester Road; and
- (iii) Paterson Street between Kingston Street and Inner Gloucester Road.

Traffic diversion will be implemented in connection with the above road closure, as follows:

- (i) Traffic along Paterson Street southbound will have to turn left onto Kingston Street eastbound;
- (ii) Traffic along Cleveland Street will not be allowed to turn right onto Kingston Street westbound; and
- (iii) Traffic along Gloucester Road and Tai Hang Road Flyover northbound will not be allowed to turn left onto Kingston Street westbound.

(c) Suspension of Carparks and Parking Spaces

- (i) All parking spaces in the Hing Fat Street Public Carpark (except disabled and motorcycle parking spaces) will be suspended from 5.00 p.m. to 11.59 p.m. on 24 September 2007; and from 5.00 p.m. on 25 September 2007 to 3.00 a.m. on 27 September 2007 continuously.
- (ii) The access for public carparks at Great George Street will be restricted from 7.00 p.m. on 25 September 2007 to 3.00 a.m. on 26 September 2007; from 7.00 p.m. on 26 September 2007 to 3.00 a.m. on 27 September 2007; and subject to crowd and traffic condition, the access may be restricted from 7.00 p.m. to 11.59 p.m. on 24 September 2007.

(d) Suspension of Taxi Stands

Taxi stands at the following locations will be suspended from 7.00 p.m. to 11.59 p.m. on 24 September 2007 (subject to traffic

condition);  
from 7.00 p.m. on 25 September 2007 to 3.00 a.m. on 26 September 2007; and  
from 7.00 p.m. on 26 September 2007 to 3.00 a.m. on 27 September 2007:

- (i) Paterson Street near Kingston Street;
- (ii) Electric Road near Park Tower;
- (iii) Ngan Mok Street; and
- (iv) Lockhart Road near Cannon Street.

(e) Suspension of Public Light Bus Stands

Public light bus stands at Sugar Street and Paterson Street will be suspended from 7.00 p.m. to 11.59 p.m. on 24 September 2007 (subject to traffic condition);  
from 7.00 p.m. on 25 September 2007 to 3.00 a.m. on 26 September 2007; and  
from 7.00 p.m. on 26 September 2007 to 3.00 a.m. on 27 September 2007.

(f) Learner Driver Prohibition

The following roads will be prohibited to all learner drivers from 7.00 p.m. to 11.30 midnight on 25 September 2007 and from 7.00 p.m. to 11.30 p.m. on 26 September 2007:

- (i) Leighton Road eastbound;
- (ii) Tin Lok Lane;
- (iii) Tung Lo Wan Road;
- (iv) Hing Fat Street;
- (v) Electric Road between Wing Hing Street and Yacht Street;
- (vi) Morrison Hill Road northbound;
- (vii) Hennessy Road east of Marsh Road;
- (viii) Tin Hau Temple Road between Fortress Hill Road and Causeway Road; and
- (ix) Causeway Road.

(3) Traffic Arrangements in the Peak Area

From 5.00 p.m. on 25 September 2007 to 2.00 a.m. on 26 September 2007;  
from 11.00 a.m. to 11.00 p.m. on 26 September 2007

- (a) Peak Road northbound will be closed to vehicular traffic except for local residents or with permits. All vehicles will be diverted to southbound carriageway of Peak Road via the slip road beside the car park entrance at the Peak Galleria ;
- (b) Only vehicles with permits will be allowed to enter Lugard Road and Harlech Road ; and
- (c) Mount Austin Road will be accessible for residents only.

(4) Traffic Arrangements in Repulse Bay on 25 and 26 September 2007

- (a) The following road closures *may* be implemented depending on the density of the crowd and vehicular traffic:
  - (i) Public light buses will be prohibited from entering Beach Road from Repulse Bay Road; and
  - (ii) South Bay Road south of South Bay Close will be closed to all vehicular traffic, if its carparks are full, except residents and public transports.
- (b) The following traffic diversion may be implemented depending on the density of the crowd and vehicular traffic:
  - (i) All vehicles on Repulse Bay Road eastbound will not be permitted to make a ‘U’ turn at its junction with South Bay Road;
  - (ii) All vehicles on Repulse Bay Road will be banned from entering The Repulse Bay carpark, if it is full; and
  - (iii) All vehicles at Beach Road, except for residents at South Bay Road, will be diverted onto South Bay Road northbound for leaving the area, if the carparks at South Bay Road are full.
- (c) The following facilities will be suspended from 4.00 p.m. to 6.00 a.m. on the following day daily on 25 and 26 September 2007:
  - (i) The taxi stand on Repulse Bay Road opposite “The Repulse Bay”.
  - (ii) All metered parking spaces and motorcycle parking spaces on Island Road except disabled parking spaces.
  - (iii) All metered parking spaces and motorcycle parking spaces on Beach Road.

(5) Traffic Arrangements in Shek O

- (a) 15 parking spaces next to the covered walkway and refuse collection point at Shek O Beach Public Carpark will be suspended from 4.00 p.m. on 25 September 2007 to 7.00 p.m. on 26 September 2007.
- (b) The following road closures *may* be implemented depending on the density of the crowd and vehicular traffic on 25 and 26 September 2007:
  - (i) The road leading to Shek O Headland will be closed to all vehicular traffic, except residents;
  - (ii) The road leading to Shek O Public Carparks will be closed to all vehicular traffic, except residents and public transports; and
  - (iii) Big Wave Bay Road will be closed to all vehicular traffic, except for public transports and residents.

(6) Traffic Arrangements in Stanley

The following road closures *may* be implemented depending on the density of the crowd and vehicular traffic on 25 and 26 September 2007:

- (i) Stanley Beach Road will be closed to all vehicular traffic, if its carparks are full, except residents and public transports; and
- (ii) Wong Ma Kok Path will be closed when the public parking spaces thereat are full, except for residents.

**B. New Territories**

(1) Tuen Mun Road

Public light buses will be temporarily allowed to use Tuen Mun Road between Tuen Hing Road and Siu Lam Interchange on 25 and 26 September 2007 each day from 5.00 p.m. to 5.00 a.m. on the following day.

(2) Tai Mo Shan Road

Tai Mo Shan Road will be closed to all vehicular traffic except emergency vehicles on 25 and 26 September 2007 each day from 5.00 p.m. to 3.00 a.m. on the following day

(3) Shing Mun Road

Section of Shing Mun Road north of its junction with Wo Yi Hop Road will be closed to all vehicular traffic except emergency vehicles on 25 and 26 September 2007 each

day from 5.00 p.m. to 3.00 a.m. on the following day. Subject to traffic situation, taxis and green minibuses may be allowed to enter this section of road.

(4) **Traffic Arrangements in Ma On Shan**

The following road closures may be implemented depending on the volume of the crowd and vehicular traffic on 25 and 26 September 2007 each day from 3.00 p.m. to 3.00 a.m. on the following day:

- (i) Section of Ma On Shan Tsuen Road south of the small turnaround will be closed to all vehicular traffic except residents and emergency vehicles; and
- (ii) Section of Lok Wo Sha Lane north of its junction with Sai Sha Road will be closed to all vehicular traffic except residents, trucks returning to the carpark adjacent to Lok Wo Sha Lane and emergency vehicles.

**C. Removal of illegal parked vehicles**

Any vehicle found illegally parked within the precincts of the special traffic arrangements specified above will be towed away without prior notice or will be ticketed.

**D. Enforcement**

Actual implementation of above road closures, traffic diversions will be made by the police at the time depending on conditions in the areas.

## II. Public Transport Services Arrangements

### (1) MTR Service

The Island Line, Tsuen Wan Line, Kwun Tong Line, Tseung Kwan O Line and Tung Chung Line will be operated overnight from 25 September 2007 to the following day.

### (2) KCR East Rail Service

Both last northbound and southbound trains departing from East Tsim Sha Tsui Station and Sheung Shui Station respectively on 25 September 2007 will be extended to 2.00 a.m. on the following day.

### (3) KCR West Rail Service

(a) Both last northbound and southbound trains departing from Nam Cheong Station and Tuen Mun Station respectively on 25 September 2007 will be extended to 2.00 a.m. on the following day.

(b) The last departure of feeder bus route 506 at Tuen Mun Ferry Pier will be at 2.30 a.m. on 26 September 2007. The last departures of feeder bus route K16 will be extended to 2.40 a.m. at Nam Cheong Station and to 1.20 a.m. at East Tsim Sha Tsui Station respectively on 26 September 2007. The last departures of feeder bus routes K51 and K52 at both termini will be at 1.00 a.m. on 26 September 2007.

### (4) KCR Ma On Shan Rail Service

Both last northbound and southbound trains departing from Tai Wai Station and Wu Kai Sha Station on 25 September 2007 will be extended to 2.32 a.m. and 2.00 a.m. respectively on the following day.

### (5) LRT Service

The last departures for Routes 705 and 706 in Tin Shui Wai area and Routes 614P, 615P and 507 in Tuen Mun Area on 25 September 2007 will be extended to 2.30 a.m. on the following day.

### (6) Peak Tram Service

The service on 25 September 2007 will be extended to 2.00 a.m. on the following day. Its frequency of service will be adjusted according to passenger demand.

### (7) Tram Service

The tram service on 25 September 2007 will be extended to 2.00 a.m. on the following day. The services on 24 and 26 September 2007 will be strengthened subject to passenger demand.



## **(8) Bus Services**

### **A. Hong Kong Island**

#### **(a) Suspension/relocation of bus termini**

- (i) Tin Hau MTR Bus Terminus will be suspended from during the following periods:

from 7.00 p.m. on 25 September 2007 to 3.00 a.m. on 26 September 2007.

During the above periods,

- Routes 15B, E11, 914 and 968 will terminate at Tung Lo Wan Road opposite to Queen's College. The above routes will be diverted via King's Road, Ngan Mok Street, Lau Li Street, King's Road on its way to Causeway Bay; the route will depart via Tung Lo Wan Road and Moreton Terrace before resuming their original routings. The bus stops for the above routes at Causeway Road outside Central Library will be suspended and temporary bus stops will be erected along Tung Lo Wan Road and Moreton Terrace; and
  - Route 25 on journey to Braemar Hill will operate along King's Road eastbound and omit its en-route bus stop at Tin Hau MTR Bus Terminus.
- (ii) Shek O Road Bus Terminus will be suspended and relocated to Shek O Beach Public Carpark from 4.00 p.m. on 25 September 2007 to 7.00 p.m. on 26 September 2007. During this period, (New World First Bus) NWFB Routes 9, 309 and N9 will terminate at Shek O Beach Public Carpark.

#### **(b) Bus stops arrangements**

##### **(i) Causeway Bay**

from 5.00 p.m. on 25 September 2007 to 3.00 a.m. on 26 September 2007;  
from 5.00 p.m. on 26 September 2007 to 3.00 a.m. on 27 September 2007

The bus stops at the northern kerbside lane of Causeway Road between Victoria Park main entrance and Hing Fat Street will be re-arranged into six groups as follows:

- Routes 5, 10, 23, 23S, 25, 25C, 38, 42, 63, 65, 65S, N10, N25C, N38 and N65;
- Routes 2, 2A, 2X, 19, 77, 102, N2X and N72;
- Routes 8, 8P, 81, N8 and N8P;
- Routes 8X and N8X;
- Routes 601, 603, 619, 621, 671, 680, 680X, 681, 681P, 690, 692, N601, N619, N680, and N691; and
- Routes 103, 106, 112, 116, 170, 914, 968, A11, E11, R11, N122 and N170.

(ii) Southern District from 4.00 p.m to 6.00 a.m. on the following day daily on 25 and 26 September 2007

1. The bus stops for Routes 6A, 6X, N6X, 65, 65S, 66, 73, 973, N73, N973, 260 and N65 on Island Road westbound, opposite the golf course, will be relocated westwards for about 15 metres and will be re-arranged into two groups as follows :-
  - Routes 6A, 6X, 260, N6X, and 66; and
  - Routes 65, 65S, N65, 73, 973, N73 and N973.
2. The Central bound bus stops for Routes 6, 6A, 6X, 61, 73, 973, N6, N6X, N73, N973, 63, 65, 65S, 66, N65 and 260 at Repulse Bay Road after junction with South Bay Road will be suspended. The bus stops for these routes and GMB/Residents' Service stops on Repulse Bay Road opposite to house no. 109 will be re-arranged into five groups as follows :-
  - Routes 6A, 6X, N6X and 260;
  - Routes 6, 61 and 66;
  - Routes 73, 973, N73 and N973;
  - Route 63, 65, 65S, and N65; and
  - GMB 40 & 52 and RS HR 44.

(c) Bus diversions in Causeway Bay

from 7.00 p.m. to 11.59 p.m. on 24 September 2007 (may be implemented);  
from 7.00 p.m. on 25 September 2007 to 3.00 a.m. on 26 September 2007;  
from 7.00 p.m. on 26 September 2007 to 3.00 a.m. on 27 September 2007.

- (i) Buses of NWFB Route 2, Cross Harbour Routes 102 and 106 on journeys to the Eastern District will be re-routed to operate via Victoria Park Road and Wing Hing Street in lieu of Gloucester Road and Causeway Road. Bus stops for these routes at Inner Gloucester Road, Causeway Road and King's Road near Ngan Mok Street will be suspended. Temporary bus stops will be erected at Causeway Bay Typhoon Shelter and Wing Hing Street No. 21.
- (ii) NWFB Route 19 on journeys to Eastern District will be diverted via Leighton Road, Pennington Street, Yee Wo Street and Causeway Road. The Bus stops for this route at Gloucester Road and Victoria Park Road will be suspended. Temporary bus stops will be erected at Leighton Road No. 91 and Pennington Street No. 19.
- (iii) Cross Harbour Route 307 will be re-routed via Gloucester Road service road, Percival Street, Hennessy Road, Yee Wo Street and Causeway Road for its Tai Po bound journeys.

(d) Extension of operating hours

The service hours of the following routes will be extended :

<u>Route</u>		<u>Terminus</u>	<u>Extended last departure time</u>
CTB	6X	Central (Exchange Square) Stanley Prison	11.55 p.m. on 25.09.2007 11.55 p.m. on 25.09.2007
CTB	73	Wah Fu (North) Stanley Prison	11.55 p.m. on 25.09.2007 -
CTB	973	Tsim Sha Tsui East Stanley	11.05 p.m. on 25.09.2007 11.40 p.m. on 25.09.2007
NWFB	65S	North Point Ferry  Stanley Village	7.45 p.m. – 11.45 p.m. on 25.09.2007 8.15 p.m. – 11.50 p.m. on 25.09.2007

(e) Special bus services for the Peak

The special bus services are as follows:

<u>Route</u>		<u>Terminus</u>	<u>Period of Operation</u>
NWFB	N15	Central (Exchange Square) The Peak	00.30 a.m. – 6.00 a.m. on 26.09.2007 1.15 a.m. – 6.30 a.m. on 26.09.2007

(f) Special bus services for beach areas in Southern District

The special bus services are as follows:

<u>Route</u>		<u>Terminus</u>	<u>Period of Operation</u>
NWFB	N9	Shau Kei Wan Shek O	1.05 a.m. – 5.52 a.m. on 26.09.2007 1.35 a.m. – 5.52 a.m. on 26.09.2007
NWFB	N14	Grand Promenade Stanely Village	00.00 a.m. – 2.00 a.m. 26.09.2007 00.30 a.m. – 2.50 a.m. 26.09.2007
NWFB	N65	North Point Ferry Stanley Village	00.00 a.m. - 1.00 a.m. on 26.09.2007 00.00 a.m. - 5.30 a.m. on 26.09.2007
CTB	N6X	Central (Exchange Square) Stanley Prison	00.05 a.m. – 3.05 a.m. on 26.09.2007 00.12 a.m. – 5.40 a.m. on 26.09.2007
CTB	N73	Wah Fu (North) Stanley Prison	00.10 a.m. - 2.40 a.m. on 26.09.2007 00.00 a.m. - 3.30 a.m. on 26.09.2007

<u>Route</u>	<u>Terminus</u>	<u>Period of Operation</u>
CTB	N973 Stanley	00.00 a.m. – 3.00 a.m. on 26.09.2007

(g) Other special night bus services on Hong Kong Island

<u>Route</u>	<u>Terminus</u>	<u>Period of Operation</u>
NWFB	N2X Shau Kei Wan Wan Chai Ferry Pier	00.15 a.m. – 1.00 a.m. on 26.09.2007 1.12 a.m. – 3.00 a.m. on 26.09.2007
NWFB	N15C Central Star Ferry Lower Peak Tram Station	11.55 p.m. – 2.00 a.m. on 26.09.2007 00.05 a.m. – 2.15 a.m. on 26.09.2007
NWFB	23S Causeway Road (Central Library) Pokfield Road	00.15 a.m. – 2.00 a.m. on 26.09.2007 1.00 a.m. on 26.09.2007
NWFB	N38 Causeway Road (Central Library) Chi Fu Fa Yuen	00.50 a.m. – 2.00 a.m. on 26.09.2007 00.45 a.m. – 1.00 a.m. on 26.09.2007
KMB & NWFB	N601 Drake Street Bus Terminus to Po Tat	00.15 a.m. – 1.30 a.m. on 26.09.2007
NWFB	N970 So Uk Aberdeen	1.45 a.m. – 3.00 a.m. on 26.09.2007 11.45 p.m. on 25.09.2007 – 2.00 a.m. on 26.09.2007
CTB	N10 North Point Ferry Pier Kennedy Town	00.10 a.m. - 3.00 a.m. on 26.09.2007 1.15 a.m. – 3.05 a.m. on 26.09.2007
CTB	N25C Wan Chai (Hong Kong Convention and Exhibition Centre Extension) to Braemar Hill (Circular)	00.00 a.m. - 1.00 a.m. on 26.09.2007
CTB	72S Wah Kwai Causeway Bay	00.12 a.m. - 2.00 a.m. on 26.09.2007 00.42 a.m. - 2.30 a.m. on 26.09.2007
CTB	N95C Ap Lei Chau Estate to Chi Fu Fa Yuen (Circular)	00.20 a.m. - 1.40 a.m. on 26.09.2007
CTB	N96 Lei Tung Estate Causeway Bay	00.15 a.m. – 2.00 a.m. on 26.09.2007 00.45 a.m. – 2.30 a.m. on 26.09.2007

<u>Route</u>	<u>Terminus</u>	<u>Period of Operation</u>
CTB N98	Lei Tung Estate Aberdeen	00.40 a.m. – 1.40 a.m. on 26.09.2007 00.55 a.m. - 1.55 a.m. on 26.09.2007
CTB N592	South Horizons Causeway Bay	00.27 a.m. – 2.00 a.m. on 26.09.2007 00.57 a.m. – 2.30 a.m. on 26.09.2007

(h) Strengthened Bus Services

The bus services for NWFB Routes 2A, 2X, 8, 8P, 9, 14, 15, 15C, N8 and N8P, CTB Routes 5, 5B, 6, 6X, 10, 73, 260, 780, 788, N8X, N72, and N90, and cross-harbour Routes 102, 118, 170, 601, 619, 680, 962, 969, 973, 970X, N102, N118, N121, N122, N170, N171, N182, N619, N680, N691, N962, N969, N11 and N21 will be strengthened subject to passenger demand.

**B. Kowloon and the New Territories**

(a) KMB

Additional KMB Services will be operated as follows :

Extension of Operating Hours of Normal Bus Services

<u>Route</u>	<u>Terminus</u>	<u>Extended Period of Operation</u>
18	Nam Cheong Station Public Transport Interchange	up to 12.00 midnight on 25.9.2007
212	Whampoa Garden Sham Shui Po (Tonkin Street)	up to 12.30 a.m. on 26.9.2007 up to 12.30 a.m. on 26.9.2007
61M	Lai King North Yau Oi (South)	Up to 1.30 a.m. on 26.09.2007 Up to 1.30 a.m. on 26.09.2007
75K	Tai Mei Tuk Tai Po Market KCR Station	up to 1.00 a.m. on 26.09.2007 up to 12.15 a.m. on 26.09.2007
N260	Tuen Mun Pier Head Mei Foo	From 11.30 p.m. on 25.09.2007 (from Tuen Mun Pier)
N269	Tin Tsz Estate- Mei Foo	From 11.45 p.m. on 25.09.2007 (from Tin Tsz Estate)
283	Sha Tin Central	up to 12.30 a.m. on 26.09.2007

(Sha Tin Central - Mei Chung Court (Circular))

88M	Kowloon MTR Station Hin Keng	up to 12.55 a.m. on 26.09.2007 up to 12.25 a.m. on 26.09.2007
91	Diamond Hill MTR Station Clear Water Bay	up to 12.00 midnight on 25.09.2007 up to 1.00 a.m. on 26.09.2007
96R	Diamond Hill MTR Station Wong Shek Pier	From 4.00 p.m. to 11.00 p.m. on 25.09.2007 From 5.10 p.m. to 12.10 a.m. on 26.09.2007

(b) New World First Bus Services Ltd.

Special Services will be operated by NWFB as follows :

<u>Route</u>	<u>Terminus</u>	<u>Period of Operation</u>
701S	Hoi Lai Estate – Mong Kok (Circular)	Up to 5.20 a.m. on 26.9.2007

Service of route N796 will be strengthened subject to passenger demand.

(c) New Lantao Bus Co. Ltd.

The service of the following bus routes will be strengthened:

(i) Additional Service

<u>Route</u>	<u>Terminus</u>	<u>Departure Time of Additional Trips</u>
3M	Tung Chung Town Centre	7.25 p.m., 8.30 p.m., 9.40 p.m., 10.30 p.m. and 11.15 p.m. on 25 September 2007

(ii) Frequency of Route N38 (Tung Chung MTR Bus Terminus – Yat Tung Estate) will be strengthened to every 8 minutes from 00.30 a.m. to 02.30 a.m. on 26 September 2007.

(iii) Frequency of Route 11 (Tung Chung Town Centre – Tai O) will be strengthened to 15-20 minutes from 5.45p.m. to 12.00 mid-night on 25 September 2007.

(iv) Additional buses will be deployed to cope with passenger demand of special

ferry services in Mui Wo.

**(9) Green Minibus Service**

**A. Hong Kong Island**

- (a) The operating hours of Hong Kong PLB (Scheduled) Service will be extended to the time specified below:

	<u>Route</u>	<u>Period of extension</u>	<u>Fare charged during extension period</u>
16X	Chai Wan MTR Station - Stanley Beach	up to 3.00 a.m. on 26.09.2007	\$7.80
39M	Tin Hau MTR Station - Yue On Court (Ap Lei Chau)	up to 6.00 a.m. on 26.09.2007	\$8.00 (after 12.00 midnight)
43M	Fung Wah Estate – Chai Wan MTR Station (Circular)	up to 3.00 a.m. on 26.09.2007	\$2.50
47M	Chai Wan MTR Station – Siu Sai Wan Phase III (Circular)	up to 3.00 a.m. on 26.09.2007	\$3.00
50	Yiu Tung Estate – Sai Wan Ho (Circular)	up to 3.00 a.m. on 26.09.2007	\$2.70
52	Aberdeen (Shek Pai Wan) to Stanley Prison	up to 5.00 a.m. on 26.09.2007 and 2.00 a.m. on 27.09.2007.	\$9.00 (\$7.00 from Aberdeen to Repulse Bay) after 12.00 midnight

(b) Suspension of GMB stands and Green minibus diversions

During the closure of Tin Hau Public Transport Interchange,

- (i) GMB route 39M will be converted to a circular route and omit Tin Hau MTR Station; and
- (ii) GMB route 49M will omit Hing Fat Street, Tin Hau MTR Station, King's Road, Ngan Mok Street and Lau Li Street on journeys to Braemar Hill.

During the closure of Paterson Street and the suspension of the GMB stand, GMB route 25 will be diverted via Tai Hang Road, Tung Lo Wan Road, Moreton Terrace, Causeway Road, Tung Lo Wan Road and Tai Hang Road.

## B. Kowloon

The operating hours of Kowloon PLB (Scheduled) Service will be extended up to the time specified below:

<u>Route</u>	<u>Terminus</u>	<u>Period of extension</u>	<u>Fare charged during the extension period</u>
16	Jat's Incline to Ping Shek Estate	up to 6.00 a.m. on 26.9.2007	\$3.0
16A	Fung Shing Street to Ping Shek Estate	up to 6.00 a.m. on 26.9.2007	\$3.0
18M	Wong Tai Sin MTR Station to Tsz Wan Shan (North)	up to 3.00 a.m. on 26.9.2007	\$3.6
19M	Diamond Hill MTR Station Public Transport Interchange to Tsz Wan Shan (Shatin Pass Estate)	up to 3.00 a.m. on 26.9.2007	\$4.0
37M	Wong Tai Sin MTR Station to Tsz Wan Shan (North)	up to 7.00 a.m. on 26.9.2007	\$2.9
38M	Chuk Yuen (North) Estate to Wong Tai Sin MTR Station (Shatin Pass Road)	up to 3.00 a.m. on 26.9.2007	\$3.5
39M	Lok Fu to Tung Tau (Circular)	up to 00.08 a.m. on 26.9.2007	\$2.6
43M	Tai Kok Tsui (Cherry Street) to Yaumatei MTR Station (Circular)	up to 3.00 a.m. on 26.9.2007	\$2.5
44A	Lai Chi Kok (Cheung Shun Street) to Hoi Lai Estate (Circular)	up to 2.00 a.m. on 26.9.2007	\$3.0
51M	Richland Gardens to Kowloon Bay MTR Station (Circular)	up to 2.00 a.m. on 26.9.2007	\$3.6
53M	Lok Fu MTR Station to Tin Ma Court (Kam Chuk Lane) (Circular)	up to 2.00 a.m. on 26.9.2007	\$3.6
54M	Shun Tin – Ping Shek (Circular)	up to 3.00 a.m. on 26.9.2007	\$3.2



<u>Route</u>	<u>Terminus</u>	<u>Period of extension</u>	<u>Fare charged during the extension period</u>
59	Tsui Ping Estate (Phase 7) to Hip Wo Street (Circular)	up to 2.00 a.m. on 26.9.2007	\$2.6
63	Lam Tin (Kwong Tin Estate) to Kwun Tong (Yue Man Square)(Circular)	up to 3.00 a.m. on 26.9.2007	\$5.0
71A	Po Tat Estate to Lam Tin MTR Station (Circular)	up to 2.00 a.m. on 26.9.2007	\$3.5
71B	Sau Mau Ping Estate (Phase 5) to Lam Tin MTR Station (Circular)	up to 2.00 a.m. on 26.9.2007	\$3.5

### C. New Territories

The operating hours of New Territories PLB (Scheduled) Service will be extended up to the time specified below:

<u>Route</u>	<u>Terminus</u>	<u>Period of extension</u>	<u>Fare charged during the extended Period</u>
15M	Hong Sing – Po Lam MTR Station	up to 5.00 a.m. on 26.09.2007 up to 5.30 a.m. on 26.09.2007	\$4.0 (no section fare)
20A	Tai Po Market KCR Station – Tai Po Nethersole Hospital	<u>Tai Po Nethersole Hospital bound</u> up to 2.30 a.m. on 26 September 2007	\$5.0
		<u>Tai Po Market KCR Station bound</u> up to 2.30 a.m. on 26 September 2007	\$5.0
20C	Tai Po Market KCR Station – Tai Mei Tuk	<u>Tai Mei Tuk bound</u> up to 4.45 a.m. on 26 September 2007	\$8.00
		<u>Tai Po Market KCR Station bound</u>	\$8.00

<u>Route</u>	<u>Terminus</u>	<u>Period of extension</u>	<u>Fare charged during the extended Period</u>
		up to 5.00 a.m. on 26 September 2007	
28K	Tai Po Market KCR Station – Sha Tin (Pak Hok Ting Street) (Circular)	up to 12.00 midnight on 25.9.2007	\$8.00
80	Tsuen Wan - Chuen Lung	up to 2.00 a.m. on 26.9.2007	\$7.5 ((\$5.5 section fare) (from 00.01 a.m. on 26.9.2007 )
81M	Tsuen Wan - Shek Wai Kok Estate	up to 2.00 a.m. on 26.9.2007	\$3.0 (from 00.01 a.m. on 26.9.2007
82	Tsuen Wan (Shiu Wo Street) - Shing Mun Reservoir	up to 2.00 a.m. on 26.9.2007	\$4.5 (from 00.01 a.m. on 26.9.2007
88	Tsing Yi Estate – Kwai Fong MTR Station (via Greenfield Garden during the period of extension)	Up to 3.00 a.m. on 26.9.2007	\$4.8
88B	Greenfield Garden – Kwai Fong MTR Station	Up to to 3.00 a.m. on 26.9.2007	\$4.8
88F	Rambler Crest – Airport Railway Tsing Yi Station	Up to 12.00 midnight on 25.9.2007	\$3.2
88M (short – working service)	Kwai Fong MTR Station – Cheung Ching Bus Terminus	Up to 2.00 a.m. on 26.9.2007	\$4.8
89 (short – working service)	Kwia Shing North (Kwai Hau Street) – Kwai Hing MTR Station	Up to 2.00 a.m. on 26.9.2007	\$2.9

<u>Route</u>	<u>Terminus</u>	<u>Period of extension</u>	<u>Fare charged during the extended Period</u>
89B	Clague Garden Estate – Kwai Shing North (Kwai Hau Street)	Up to 2.00 a.m. on 26.9.2007	\$3.1
89P	Shek Tau Street – Kwai Hing MTR Station (Circular)	Up to 2.00 a.m. on 26.9.2007	\$2.9
89M	Kwai Shing North (Kwai Hau Street) – Kwai Fong MTR Station (Circular)	Up to 2.00 a.m. on 26.9.2007	\$2.9
89S	Kwai Shing North (Kwai Hau Street) – Kwai Fong MTR Station (Circular)	Up to 2.00 a.m. on 26.9.2007	\$2.9
95A	Tsuen Wan Garden – Tsuen Wan MTR Station (Circular)	Up to 2.00 a.m. on 26.9.2007	\$3.7 (from 11.46 p.m. on 25.9.2007)
95K	Tsuen Wan West WR Station – Tsuen Wan MTR Station	up to 2.00 a.m. on 26.9.2007	\$2.8 (from 00.01 a.m. on 26.9.2007)
96B	Belvedere Garden - Tsuen Wan MTR Station (Circular)	up to 3.00 a.m. on 26.9.2007	\$4.2 (from 00.48 a.m. on 26.9.2007)
96M	Tsuen Wan MTR Station - Tsing Lung Tau	up to 2.00 a.m. on 26.9.2007	\$7.5 (\$4.2 section fare on 26.9.2007) (from 00.01 a.m. on 26.9.2007)
98	Tsuen Wan (Ho Pui Street) – Kwai Shing North (Kwai Hau Street)	Up to 2.00 a.m. on 26.9.2007	\$2.9
101M	Hang Hau MTR Station – Sai Kung	up to 3.30a.m. on 26.09.2007	\$7.0 (no section fare)
103	Kwun Tong Ferry – Clear Water Bay	Up to 5.25 a.m. on 26.09.2007 Up to 5.55 a.m. on 26.09.2007	\$9.0 (no section fare)
103M	Tseung Kwan O MTR Station PTI – Clear Water Bay	Up to 6.00 a.m. on 26.09.2007 Up to 5.55 a.m. on 26.09.2007	\$8.0 (no section fare)

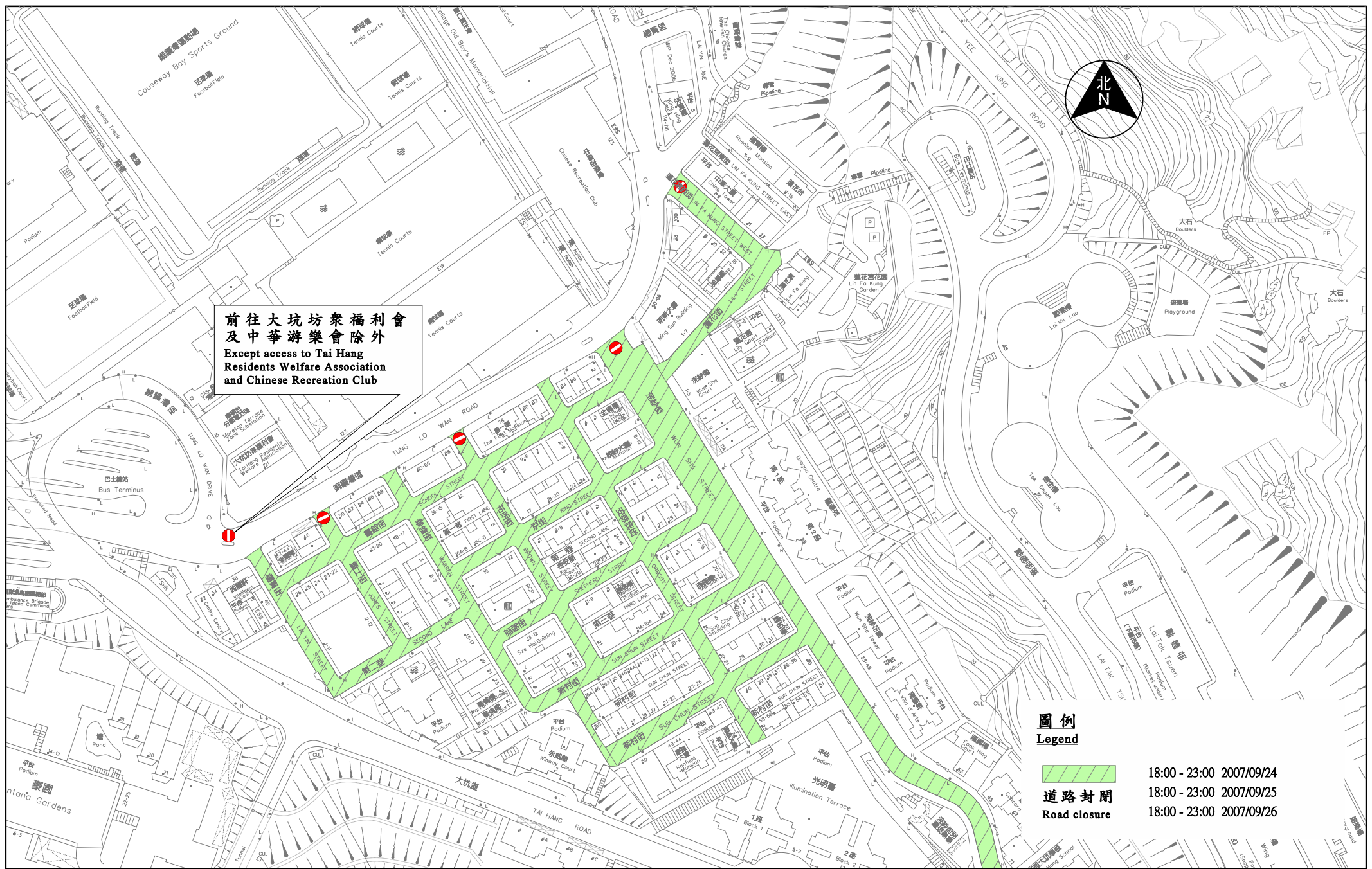
<u>Route</u>	<u>Terminus</u>	<u>Period of extension</u>	<u>Fare charged during the extended Period</u>
140M	Tuen Mun (Hanford Garden) – Tsing Yi AR Station	Up to 2.00 a.m. (Tuen Mun bound) and 1.30 a.m. (Tsing Yi bound) on 26.9.2007	\$11.0
411	Kwai Chung (Lai Kong Street) – Sham Shui Po (Po On Road) (Circular)	Up to 12.00 midnight on 25.9.2007	\$4.8
807K	University KCR Station - Tseng Tau	Up to 2.30 a.m. on 26.9.2007	\$6.0
807A	University KCR Station – Ma On Shan Central	Up to 2.30 a.m. on 26.9.2007	\$3.5

**(10) Ferry Service**

New World First Ferry, “Star” Ferry, Discovery Bay Ferry, Park Island Transport Company Ltd. and Hong Kong & Kowloon Ferry

Ferry services will be adjusted subject to passenger demand.

Alan WONG  
Commissioner for Transport



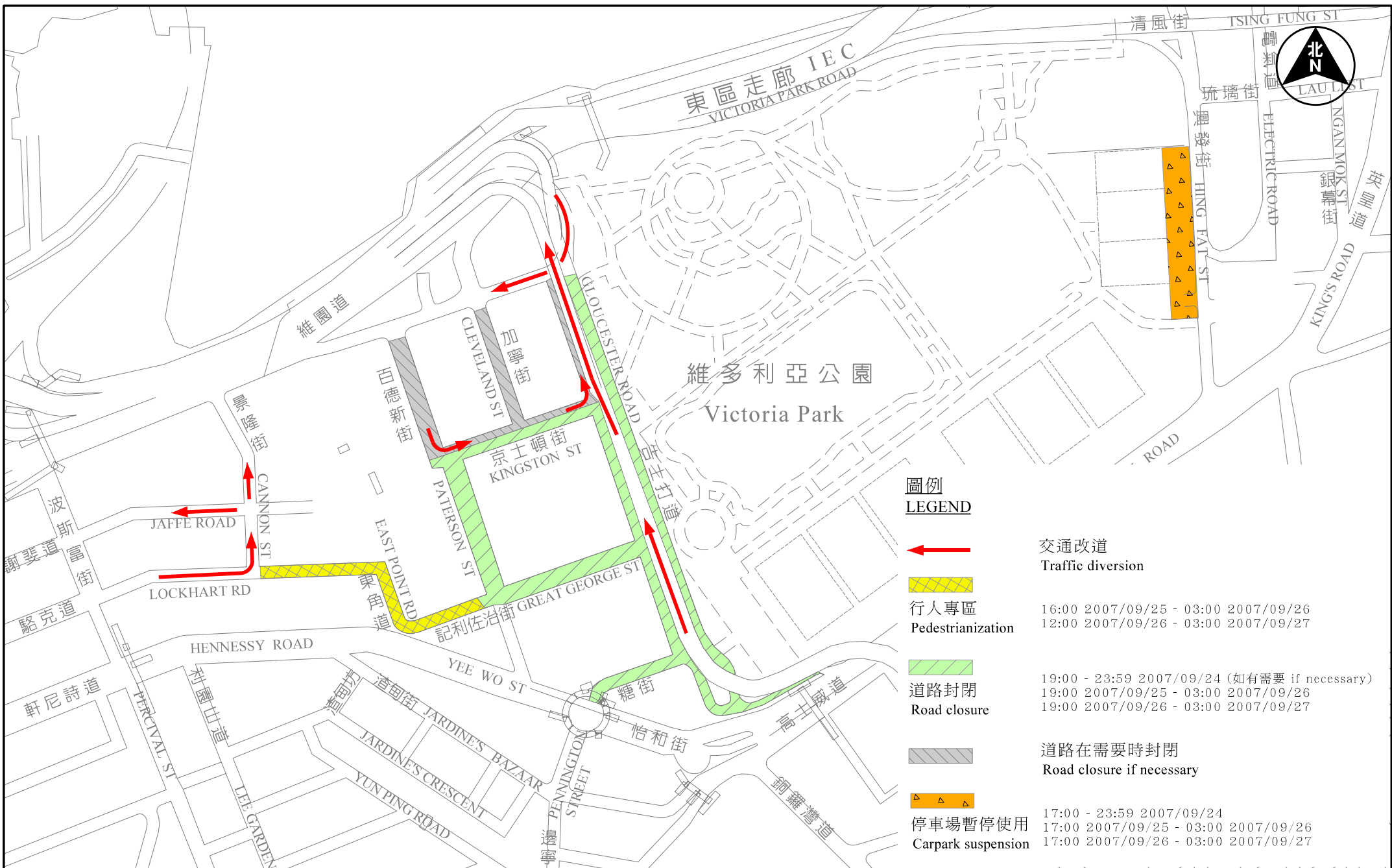
前往大坑坊眾福利會  
及中華游樂會除外  
Except access to Tai Hang  
Residents Welfare Association  
and Chinese Recreation Club

圖例 Legend	
	18:00 - 23:00 2007/09/24
	18:00 - 23:00 2007/09/25
	Road closure
	18:00 - 23:00 2007/09/26

圖一  
Figure 1

2007年大坑火龍盛會活動的特別交通安排  
Special Traffic Arrangements for the Fire Dragon Dance at Tai Hang 2007

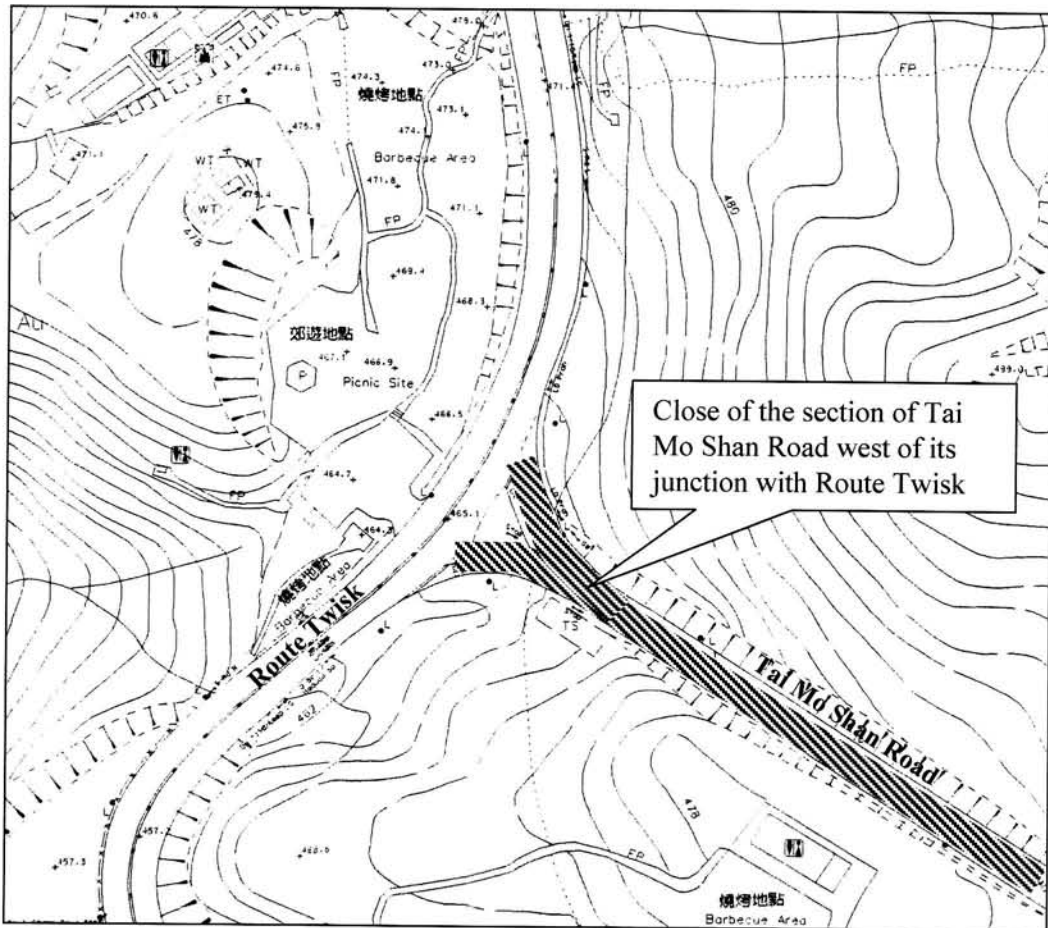





圖二  
Figure 2

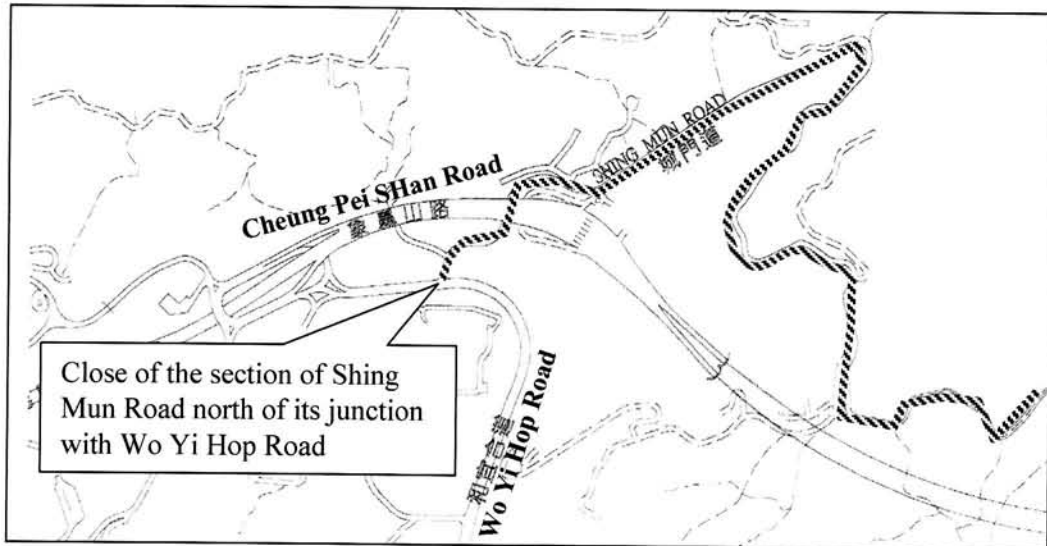
為配合2007年中秋節活動而在  
銅鑼灣實施的特別交通安排  
Special Traffic Arrangement in Causeway Bay for  
Mid-Autumn Festival 2007

## Special Traffic Arrangements in Tsuen Wan on 25 and 26 September 2007

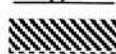


### Legend

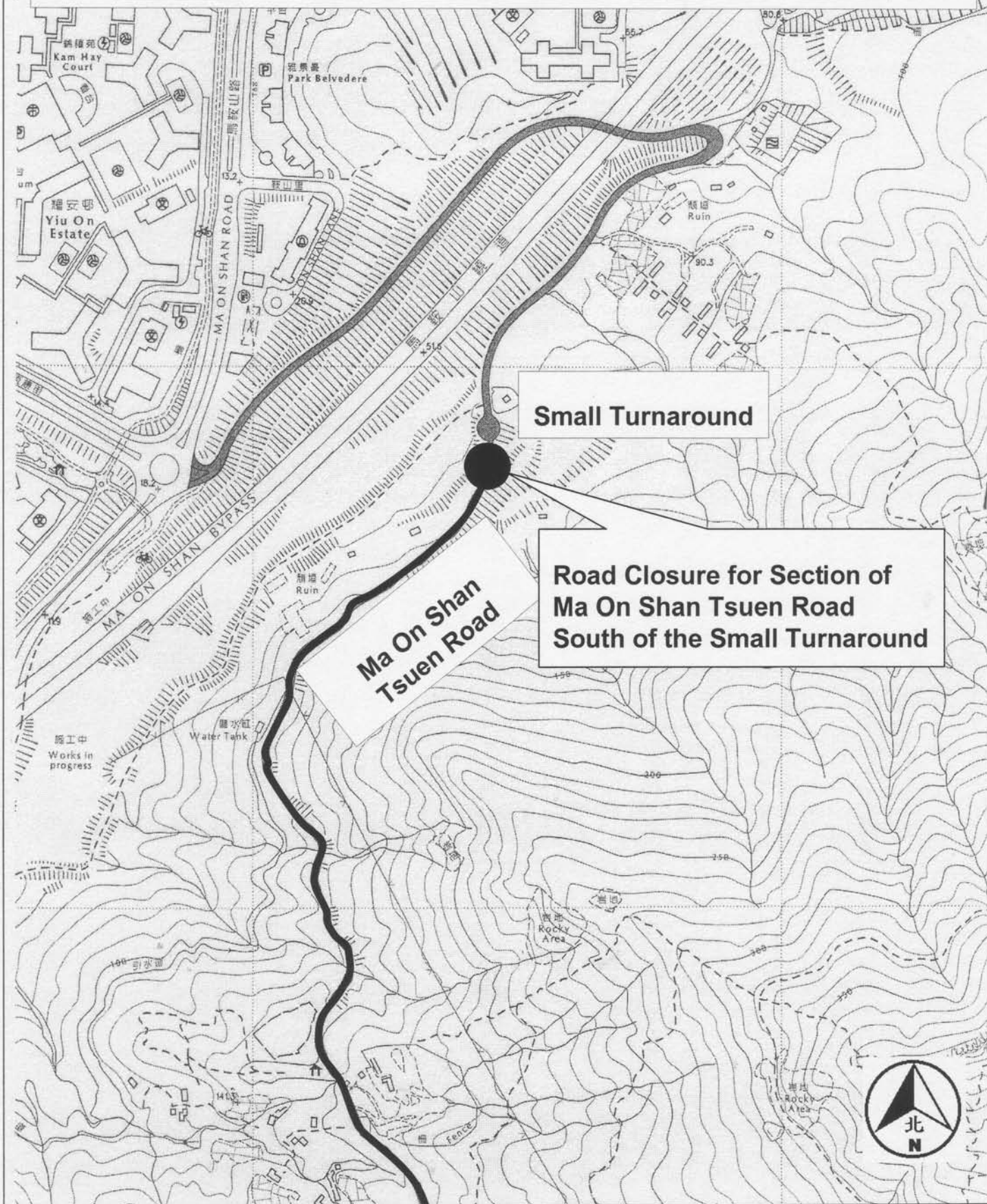
 Road closure each day from 5 p.m. to 3 a.m. on the following day (except residents and emergency vehicles)



### Legend

 Road closure each day from 5 p.m. to 3 a.m. on the following day (except residents and emergency vehicles)

# Special Traffic Arrangements for Mid-Autumn Festival in Ma On Shan on 25 and 26 September 2007



Legend:



Road closure each day from 3:00 p.m. to 3:00 a.m. on the following day (except residents and emergency vehicles)



# Special Traffic Arrangements for Mid-Autumn Festival in Ma On Shan on 25 and 26 September 2007

