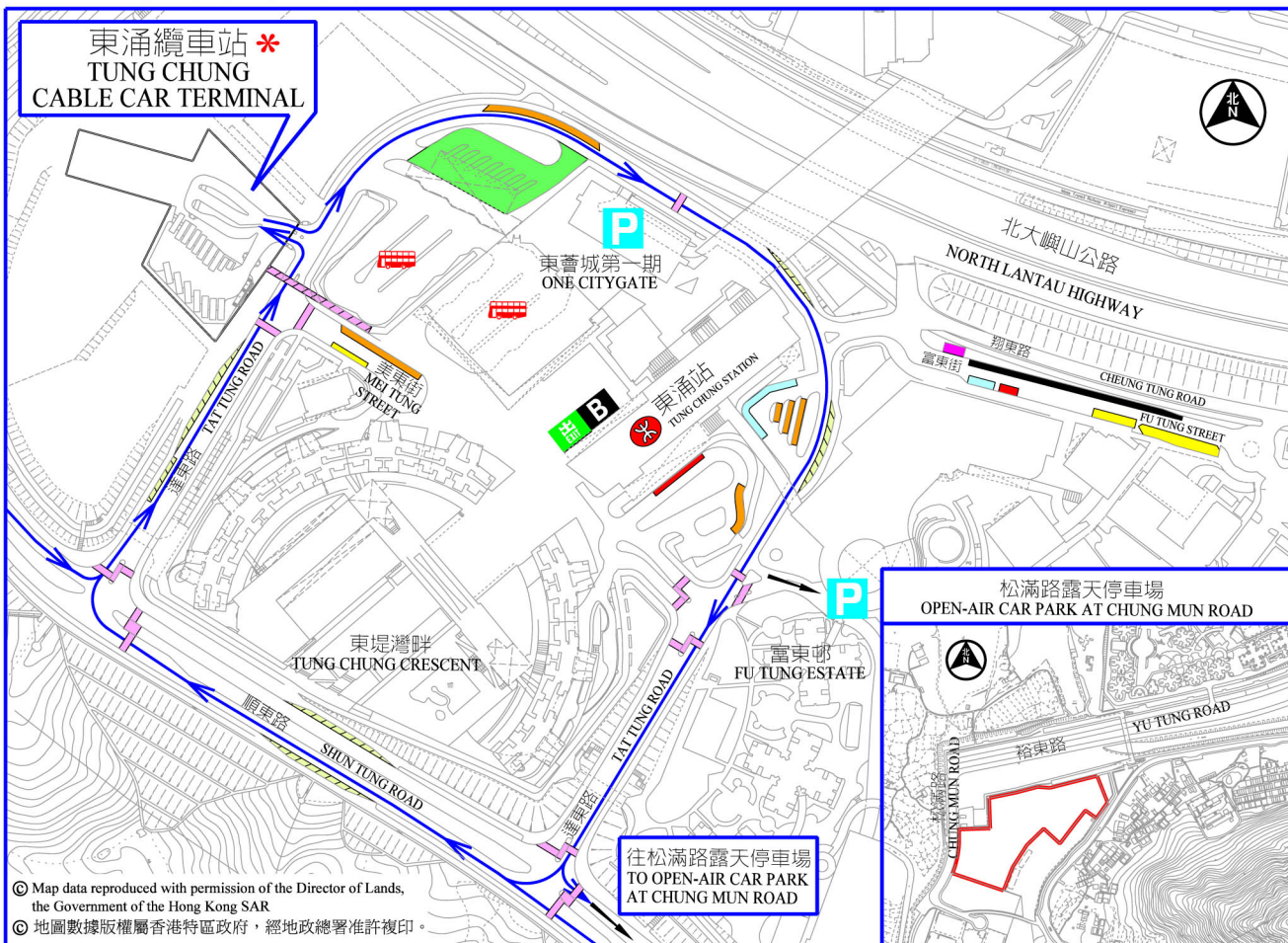


東涌纜車站附近交通及運輸設施 TRAFFIC AND TRANSPORT FACILITIES NEAR TUNG CHUNG CABLE CAR TERMINAL



圖例 LEGEND

- | | | |
|---|---|---|
| 行人天橋
FOOTBRIDGE | 市區的士站
URBAN TAXI STAND | 旅遊巴士上落客區及停泊處
COACH DROP OFF / PICK UP AND PARKING AREA |
| 行人過路處
PEDESTRIAN CROSSING | 大嶼山的士站
LANTAU TAXI STAND | 旅遊巴士/私家車停泊處
COACH / PRIVATE CAR PARKING AREA |
| 車輛上落客貨區
LOADING / UNLOADING BAY | 巴士站
BUS STOP | 私家車停泊處
PRIVATE CAR PARKING AREA |
| 來往東涌纜車站的行车路線
VEHICULAR ROUTE TO/FROM
TUNG CHUNG CABLE CAR TERMINAL | 巴士總站
BUS TERMINUS | 電單車停泊處
MOTORCYCLE PARKING AREA |
| 東涌纜車站內並不設有私家車停車位，駕車人士可把車輛停泊在上圖所示的私家車停車場或私家車停泊處。
There is no private car parking space provided at Tung Chung Cable Car Terminal. Motorist can park their vehicle at the private car park or at the private car parking area as shown in the above drawing. | 私家停車場(附設時租)
PRIVATE CAR PARK (WITH HOURLY PARKING) | |