

**Traffic Advice**  
**Traffic Arrangements in Wan Chai**

Motorists are advised that in connection with the construction of Shatin to Central Link, all vehicles on Fleming Road northbound will be prohibited from making left turn onto Lung Wo Road westbound with effect from 6.00 a.m. on 10 April 2022.

Affected vehicles on Fleming Road northbound heading to Lung Wo Road westbound will be diverted via Convention Avenue westbound and the slip road connecting Convention Avenue and Lung Wo Road. (See Figure 1)

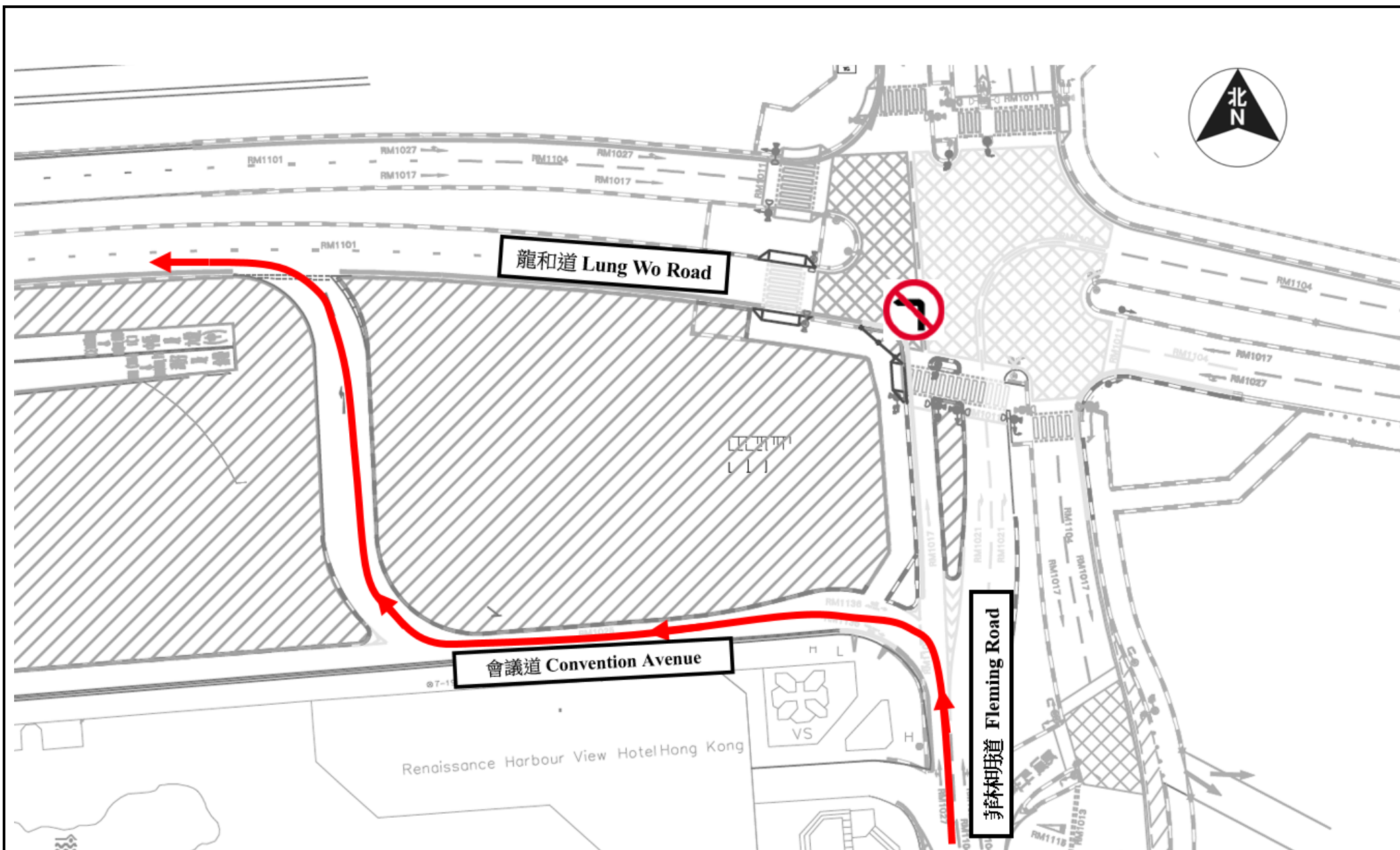
Appropriate traffic signs will be set up on site to guide motorists.

**交通通告**  
**灣仔交通安排**

駕駛人士請注意，為配合沙中線工程，在 2022 年 4 月 10 日上午 6 時起，所有車輛將禁止由菲林明道（北行）左轉駛入龍和道（西行）。

沿菲林明道（北行）前往龍和道（西行）的受影響車輛，須改經會議道（西行）及連接會議道與龍和道的支路。（見附圖一）

有關地點將設置適當交通標誌，指導駕駛人士。



附圖一  
Figure 1

灣仔交通安排 - 由 2022 年 4 月 10 日上午 6 時起  
Traffic Arrangements in Wan Chai - From 6.00 a.m. on 10 April 2022