

YEAR

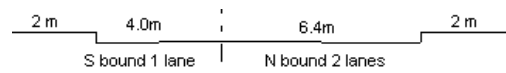
2005

LINK

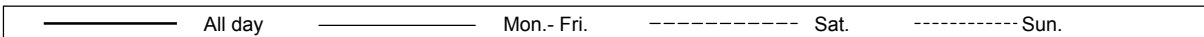
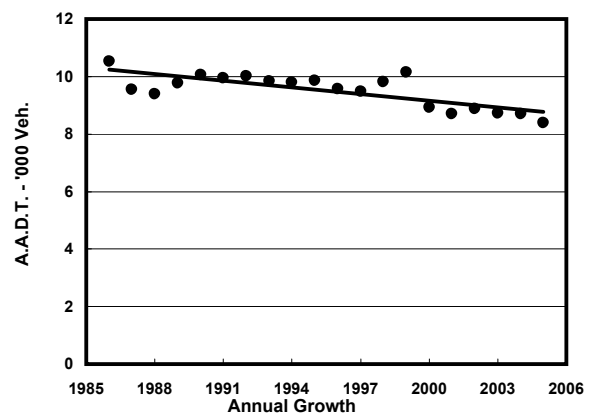
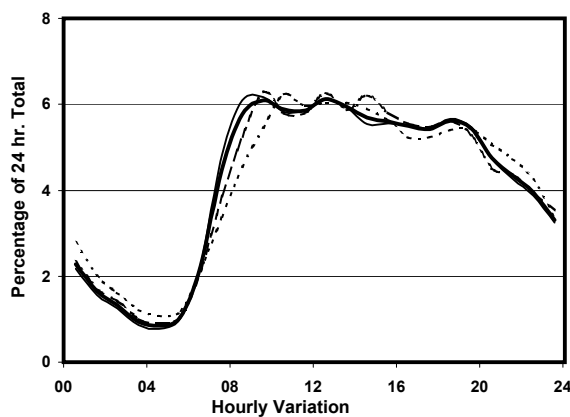
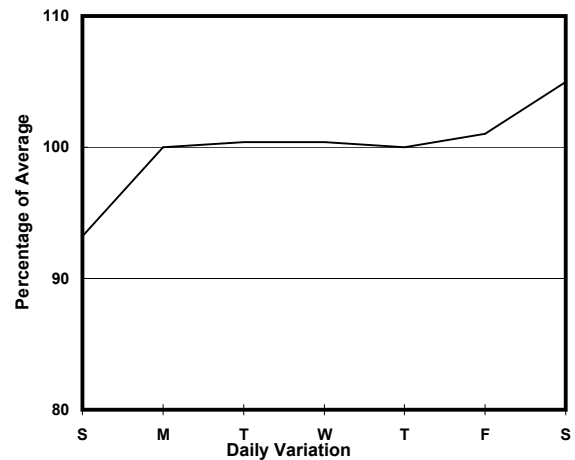
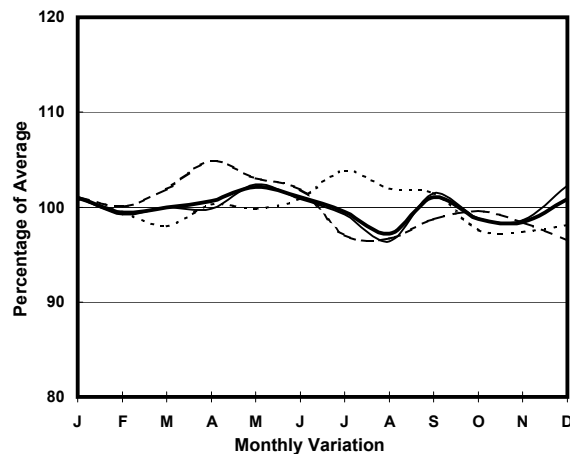
KO SHAN RD (from PAK KUNG ST to CHI KIANG ST)

CORE STATION
ROAD NETWORK
ROAD TYPE

3103
MINOR
LOCAL DISTRIBUTOR



1. TRAFFIC FLOW VARIATION AND GROWTH



2. TRAFFIC CHARACTERISTICS (BY DIRECTION)

Parameter	All - Day	Mon. - Fri.	Sat.	Sun.
SOUTH BOUND				
A.A.D.T.	3750	3790	3930	3440
R 12 / 24 - %	66.1	66.7	66.3	63
R 16 / 24 - %	85.6	86.2	85	83.3
AM Peak Hour	0800-0900	0800-0900	0900-1000	0900-1000
One-way flow at AM peak hour	210	230	210	180
T - % (AM)	-	4.3	-	-
PM Peak Hour	1800-1900	1800-1900	1800-1900	1800-1900
One-way flow at PM peak hour	230	230	240	200
T - % (PM)	-	1.4	-	-
Prop.of commercial vehicles - 16 hr.	-	3.3	-	-
NORTH BOUND				
A.A.D.T.	4640	4660	4900	4400
R 12 / 24 - %	69.4	70	69	66.8
R 16 / 24 - %	87.1	87.4	86.6	85.6
AM Peak Hour	0900-1000	0900-1000	0900-1000	0900-1000
One-way flow at AM peak hour	320	330	350	250
T - % (AM)	-	3.5	-	-
PM Peak Hour	1600-1700	1600-1700	1600-1700	1600-1700
One-way flow at PM peak hour	260	260	270	230
T - % (PM)	-	3.3	-	-
Prop.of commercial vehicles - 16 hr.	-	2.7	-	-

3. OTHER INFORMATION AND COMMENT

4. Vehicle classification and occupancy - Monday to Friday

Time		Class of vehicle									
		Motor	Private	Taxi	Private	PLB	Goods veh.		Non	Fr. Bus	
		Cycle	Car		LB		Light	M & H	Fr. Bus	SD	DD
0700-0800	Pro	0.0	8.1	60.5	4.7	11.6	5.8	0.0	9.3	0.0	0.0
	Ocp	0.0	1.7	2.3	4.8	6.9	1.4	0.0	14.4	0.0	0.0
0800-0900	Pro	3.6	28.1	37.4	6.5	7.9	12.2	0.7	3.6	0.0	0.0
	Ocp	1.0	1.4	1.6	5.2	10.3	1.7	1.0	14.0	0.0	0.0
0900-1000 Peak hour	Pro	2.2	21.6	59.0	0.0	8.2	6.7	0.0	2.2	0.0	0.0
	Ocp	1.3	1.2	1.3	0.0	7.2	1.6	0.0	1.7	0.0	0.0
1000-1100	Pro	7.1	7.1	64.3	2.9	5.7	12.9	0.0	0.0	0.0	0.0
	Ocp	1.0	1.1	1.2	3.0	7.0	1.7	0.0	0.0	0.0	0.0
1100-1200	Pro	1.6	17.5	50.0	4.0	9.5	15.1	0.0	2.4	0.0	0.0
	Ocp	1.0	1.4	1.1	1.8	5.4	1.7	0.0	15.3	0.0	0.0
1200-1300	Pro	1.7	21.5	44.6	4.1	7.4	14.9	0.8	5.0	0.0	0.0
	Ocp	1.0	1.3	1.4	6.4	7.2	1.6	2.0	12.0	0.0	0.0
1300-1400	Pro	1.5	17.7	58.5	2.3	6.2	9.2	1.5	3.1	0.0	0.0
	Ocp	1.0	1.6	1.3	2.0	6.1	2.1	1.0	8.5	0.0	0.0
1400-1500	Pro	3.3	28.3	47.5	0.8	8.3	9.2	1.7	0.8	0.0	0.0
	Ocp	2.0	1.4	1.4	1.0	5.0	1.9	2.0	25.0	0.0	0.0
1500-1600	Pro	3.3	27.5	47.5	4.2	5.8	5.0	0.8	5.8	0.0	0.0
	Ocp	1.0	1.7	1.4	4.2	3.7	2.2	2.0	13.1	0.0	0.0
1600-1700	Pro	0.0	24.4	47.2	3.3	7.3	13.8	0.8	3.3	0.0	0.0
	Ocp	0.0	1.3	1.3	3.3	6.2	1.9	2.0	1.8	0.0	0.0
1700-1800	Pro	0.9	36.2	37.1	3.4	10.3	8.6	0.0	3.4	0.0	0.0
	Ocp	1.0	1.4	1.6	2.3	9.3	1.3	0.0	4.3	0.0	0.0
1800-1900	Pro	5.0	34.8	44.0	3.5	5.7	6.4	0.7	0.0	0.0	0.0
	Ocp	1.1	1.3	1.4	11.2	15.5	1.8	1.0	0.0	0.0	0.0
1900-2000	Pro	5.6	32.4	42.3	0.7	7.0	10.6	0.0	1.4	0.0	0.0
	Ocp	1.1	1.7	1.5	3.0	13.9	1.8	0.0	3.5	0.0	0.0
2000-2100	Pro	4.0	30.3	45.5	0.0	11.1	8.1	0.0	1.0	0.0	0.0
	Ocp	1.0	1.8	1.3	0.0	6.5	1.6	0.0	1.0	0.0	0.0
2100-2200	Pro	0.0	30.5	52.6	0.0	10.5	5.3	1.1	0.0	0.0	0.0
	Ocp	0.0	1.8	1.4	0.0	4.8	1.4	2.0	0.0	0.0	0.0
2200-2300	Pro	3.5	36.5	48.2	0.0	8.2	3.5	0.0	0.0	0.0	0.0
	Ocp	1.3	1.5	1.4	0.0	4.9	1.7	0.0	0.0	0.0	0.0
16 hours	Pro	2.9	25.0	49.0	2.6	8.0	9.5	0.5	2.5	0.0	0.0
	Ocp	1.1	1.5	1.4	4.6	7.6	1.7	1.6	10.2	0.0	0.0

Legend

- Pro.** Proportion of vehicles in % (Sum may not add up to 100% due to figure rounding)
- Ocp.** Average occupancy of vehicles
- M&H** Medium and Heavy