

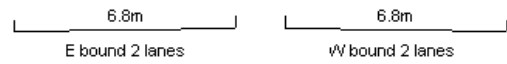
YEAR 2005

CORE STATION 5021

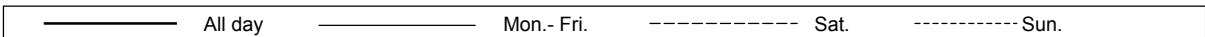
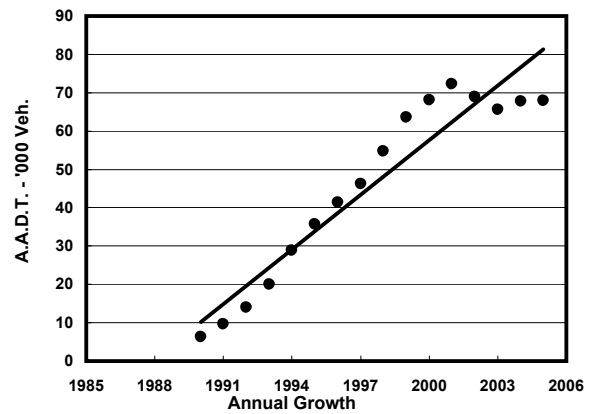
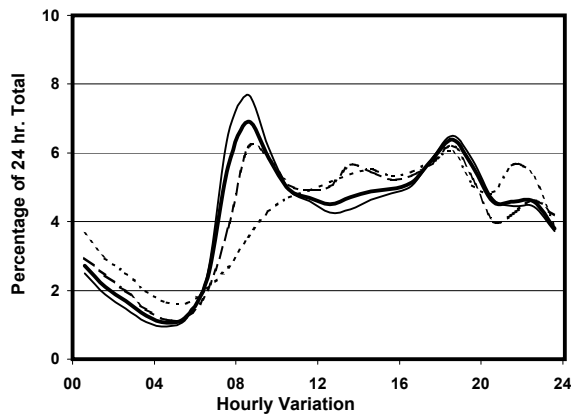
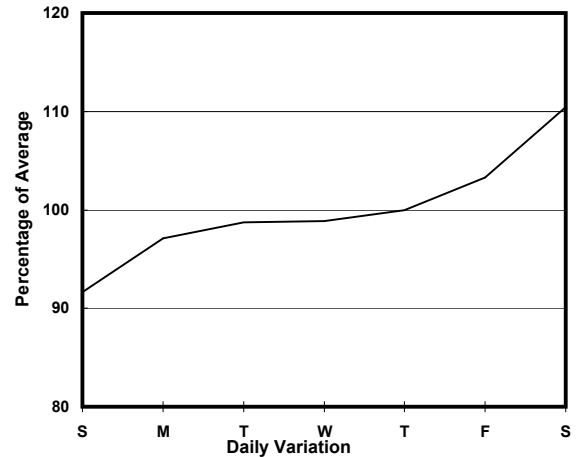
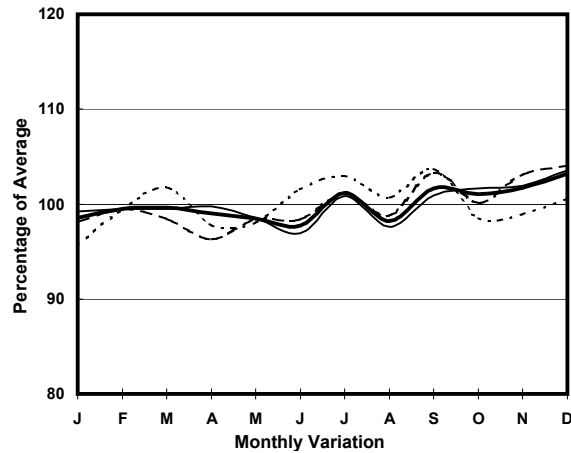
ROAD NETWORK MAJOR

ROAD TYPE URBAN TRUNK ROAD

LINK TSEUNG KWAN O TUNNEL (from TOLL PLAZA to TSEUNG KWAN O TUNNEL RD RA)



1. TRAFFIC FLOW VARIATION AND GROWTH



2. TRAFFIC CHARACTERISTICS (BY DIRECTION)

Parameter	All - Day	Mon. - Fri.	Sat.	Sun.
EAST BOUND				
A.A.D.T.	34390	34330	38160	32010
R 12 / 24 - %	59.5	60	60.7	55.3
R 16 / 24 - %	82.3	83.5	80.8	77.7
AM Peak Hour	0800-0900	0800-0900	0900-1000	0900-1000
One-way flow at AM peak hour	1740	1910	1760	1150
T - % (AM)	-	12.1	-	-
PM Peak Hour	1800-1900	1800-1900	1800-1900	1800-1900
One-way flow at PM peak hour	2410	2500	2480	1920
T - % (PM)	-	16.1	-	-
Prop.of commercial vehicles - 16 hr.	-	16.7	-	-

WEST BOUND				
A.A.D.T.	33590	33650	37320	30630
R 12 / 24 - %	69.4	70.9	68.3	62.5
R 16 / 24 - %	85.2	86	84.4	81.8
AM Peak Hour	0800-0900	0800-0900	0800-0900	0900-1000
One-way flow at AM peak hour	2960	3320	2930	1550
T - % (AM)	-	20.7	-	-
PM Peak Hour	1800-1900	1700-1800	1800-1900	1800-1900
One-way flow at PM peak hour	1940	1910	2210	1860
T - % (PM)	-	19	-	-
Prop.of commercial vehicles - 16 hr.	-	16.8	-	-

3. OTHER INFORMATION AND COMMENT

4. Vehicle classification and occupancy - Monday to Friday

Time		Class of vehicle									
		Motor	Private	Taxi	Private	PLB	Goods veh.		Non	Fr. Bus	
		Cycle	Car		LB		Light	M & H	Fr. Bus	SD	DD
0700-0800	Pro	4.2	33.0	22.0	1.9	4.7	17.6	7.4	5.2	0.0	4.0
	Ocp	1.0	1.6	2.0	5.0	13.1	1.5	1.2	20.6	0.0	41.7
0800-0900 Peak hour	Pro	3.9	44.1	18.6	1.3	4.6	12.5	8.0	3.6	0.0	3.3
	Ocp	1.1	1.4	1.8	6.7	12.5	1.4	1.3	21.2	0.0	45.3
0900-1000	Pro	2.9	39.1	18.9	0.5	4.3	19.6	9.8	1.3	0.0	3.6
	Ocp	1.0	1.3	1.7	1.2	11.0	1.3	1.1	3.4	0.0	20.3
1000-1100	Pro	2.6	33.4	12.2	1.0	5.8	25.9	14.4	0.9	0.0	3.9
	Ocp	1.0	1.3	1.6	1.3	8.1	1.5	1.2	12.0	0.0	18.2
1100-1200	Pro	4.0	33.1	9.6	1.1	6.7	26.5	13.6	1.6	0.0	3.9
	Ocp	1.1	1.3	1.6	2.4	7.5	1.7	1.2	1.2	0.0	19.9
1200-1300	Pro	1.4	33.4	10.0	2.2	7.0	24.8	13.3	3.3	0.0	4.6
	Ocp	1.2	1.4	2.0	4.0	7.5	1.6	1.4	11.3	0.0	16.6
1300-1400	Pro	3.2	29.4	8.6	2.4	4.8	29.8	15.3	2.2	0.0	4.4
	Ocp	1.1	1.4	2.1	2.9	8.7	1.5	1.2	9.8	0.0	19.6
1400-1500	Pro	2.2	22.4	9.2	1.3	6.1	33.8	19.3	1.5	0.0	4.3
	Ocp	1.1	1.5	1.9	2.7	7.5	1.7	1.3	1.9	0.0	18.0
1500-1600	Pro	2.3	33.4	10.8	1.5	5.4	24.2	15.2	2.8	0.0	4.4
	Ocp	1.1	1.5	2.0	3.4	7.8	1.5	1.3	18.2	0.0	17.2
1600-1700	Pro	1.9	38.3	11.7	1.8	4.5	20.2	12.7	5.0	0.0	4.0
	Ocp	1.1	1.4	1.6	1.2	11.3	1.3	1.3	7.3	0.0	25.2
1700-1800	Pro	3.1	38.5	9.7	1.2	4.9	21.4	11.8	5.3	0.0	4.1
	Ocp	1.0	1.4	1.9	2.6	12.2	1.5	1.2	13.8	0.0	29.7
1800-1900	Pro	4.9	41.1	11.5	0.9	5.7	19.3	8.5	4.6	0.0	3.6
	Ocp	1.2	1.5	2.0	6.8	13.6	1.3	1.2	18.4	0.0	43.8
1900-2000	Pro	4.2	50.8	12.1	0.5	5.8	14.1	6.5	2.8	0.1	3.3
	Ocp	1.1	1.3	1.7	1.8	12.5	1.3	1.1	19.5	1.0	37.6
2000-2100	Pro	3.5	48.7	16.8	0.6	6.7	13.4	5.6	0.4	0.1	4.3
	Ocp	1.2	1.3	1.7	2.0	10.8	1.5	1.1	1.3	3.0	30.5
2100-2200	Pro	3.9	44.8	22.0	0.4	7.7	11.9	4.6	0.6	0.1	4.0
	Ocp	1.2	1.5	1.9	2.0	9.8	1.3	1.4	2.6	2.5	28.5
2200-2300	Pro	4.7	47.0	26.0	0.0	6.0	7.7	3.9	0.7	0.1	3.9
	Ocp	1.3	1.4	1.9	0.0	11.5	1.8	1.2	4.8	15.5	30.6
16 hours	Pro	3.4	39.0	14.8	1.1	5.6	19.4	10.1	2.7	0.1	3.9
	Ocp	1.1	1.4	1.8	3.5	10.5	1.5	1.2	14.5	8.9	28.6

Legend

- Pro.** Proportion of vehicles in % (Sum may not add up to 100% due to figure rounding)
- Ocp.** Average occupancy of vehicles
- M&H** Medium and Heavy