

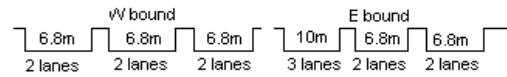
YEAR 2005

CORE STATION 1003

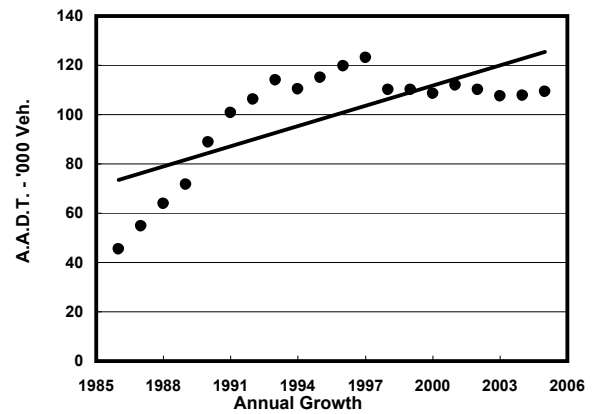
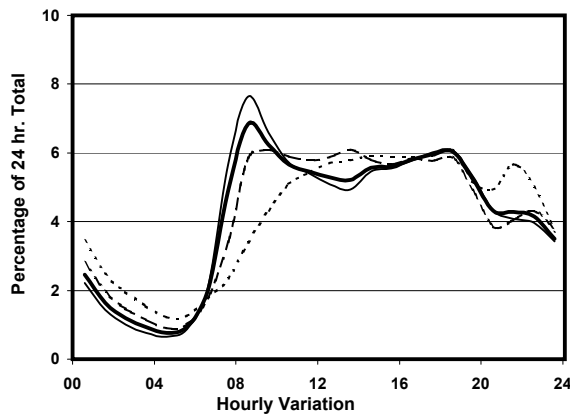
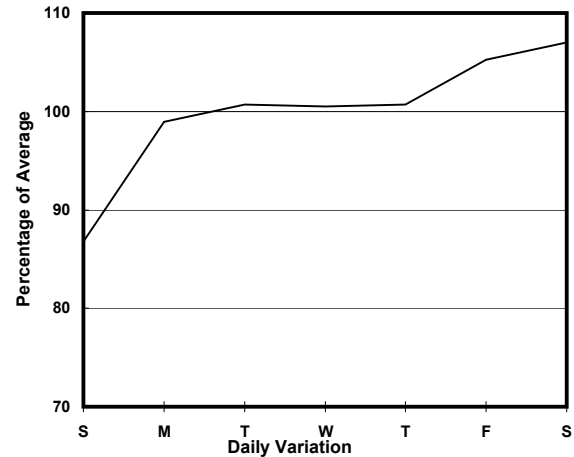
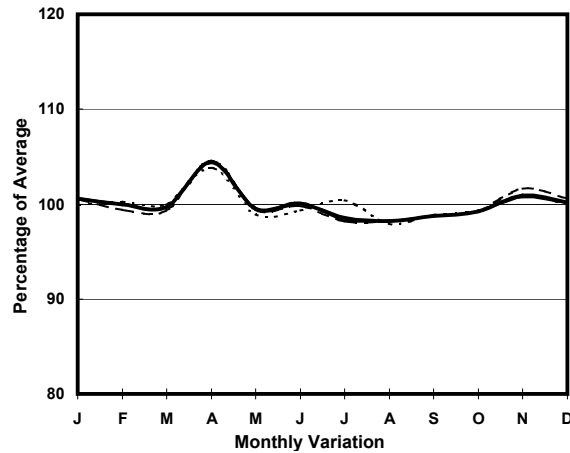
ROAD NETWORK MAJOR

ROAD TYPE EXPRESSWAY

LINK ISLAND EASTERN CORRIDOR (from HEALTHY ST INT
EASTERN END to TAIKOO SHING INT WESTERN END)



1. TRAFFIC FLOW VARIATION AND GROWTH



Legend: — All day — Mon.- Fri. - - - - Sat. - - - - - Sun.

2. TRAFFIC CHARACTERISTICS (BY DIRECTION)

Parameter	All - Day	Mon. - Fri.	Sat.	Sun.
EAST BOUND				
A.A.D.T.	54470	55290	58870	48470
R 12 / 24 - %	65.8	66.9	65.7	59.4
R 16 / 24 - %	85.5	86.6	83.8	81
AM Peak Hour	0900-1000	0900-1000	0900-1000	0900-1000
One-way flow at AM peak hour	3370	3690	3370	1930
T - % (AM)	-	-	-	-
PM Peak Hour	1800-1900	1800-1900	1600-1700	1800-1900
One-way flow at PM peak hour	3320	3410	3460	2890
T - % (PM)	-	-	-	-
Prop.of commercial vehicles - 16 hr.	-	-	-	-
WEST BOUND				
A.A.D.T.	54840	56080	59030	47030
R 12 / 24 - %	71.4	72.8	70.3	64.3
R 16 / 24 - %	87.7	88.6	86.4	84.3
AM Peak Hour	0800-0900	0800-0900	0800-0900	0900-1000
One-way flow at AM peak hour	4240	4820	4000	2200
T - % (AM)	-	-	-	-
PM Peak Hour	1700-1800	1700-1800	1800-1900	1800-1900
One-way flow at PM peak hour	3330	3460	3470	2910
T - % (PM)	-	-	-	-
Prop.of commercial vehicles - 16 hr.	-	-	-	-

3. OTHER INFORMATION AND COMMENT