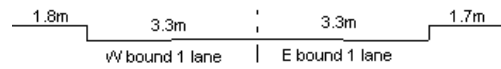


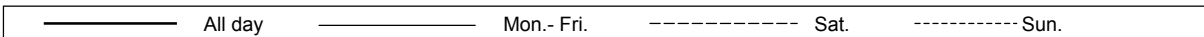
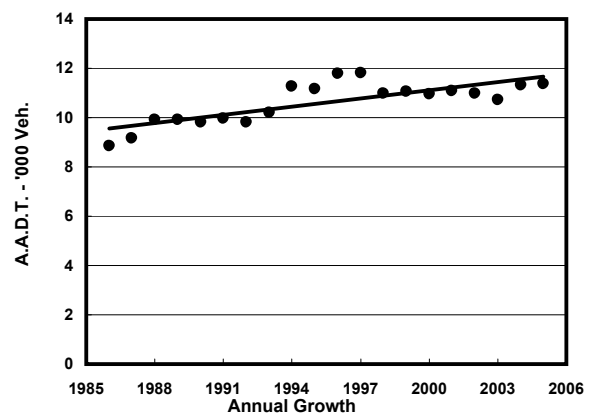
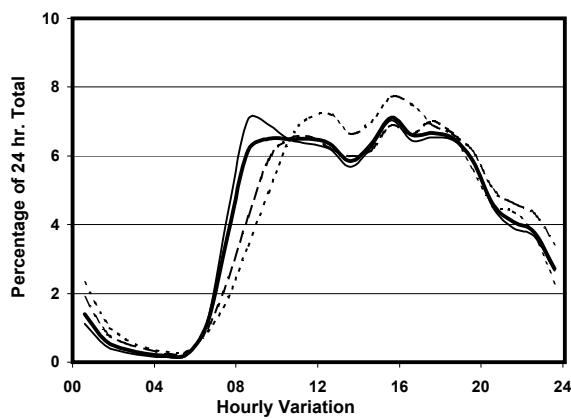
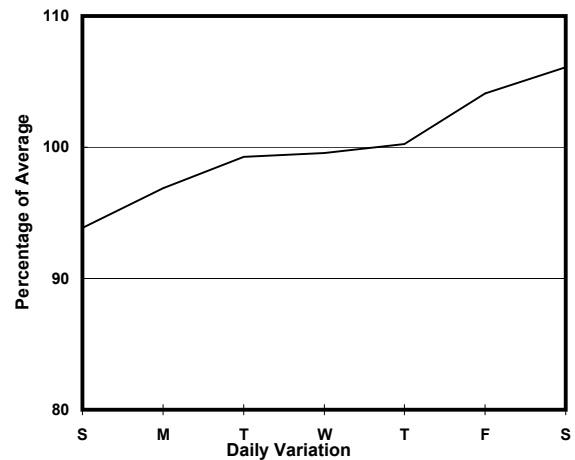
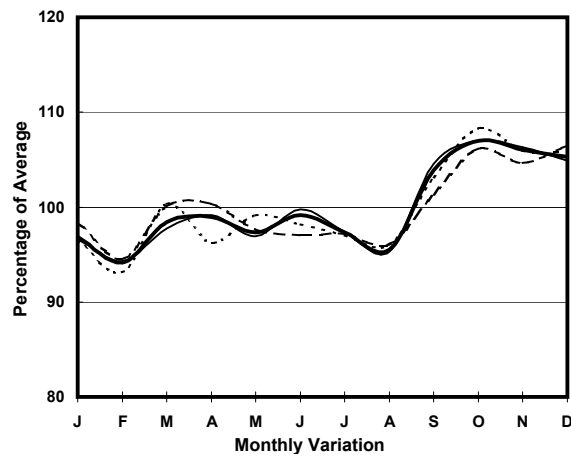
YEAR

2005

LINK PEAK RD (from MT. AUSTIN RD to MAGAZINE GAP RD)

CORE STATION
ROAD NETWORK
ROAD TYPE1014
MAJOR
DISTRICT DISTRIBUTOR

1. TRAFFIC FLOW VARIATION AND GROWTH



2. TRAFFIC CHARACTERISTICS (BY DIRECTION)

Parameter	All - Day	Mon. - Fri.	Sat.	Sun.
EAST BOUND				
A.A.D.T.	5690	5710	6040	5400
R 12 / 24 - %	74.6	75.7	71.1	72.9
R 16 / 24 - %	93	93.7	91.2	91.5
AM Peak Hour	0900-1000	0800-0900	0900-1000	0900-1000
One-way flow at AM peak hour	370	400	360	260
T - % (AM)	-	-	-	-
PM Peak Hour	1700-1800	1800-1900	1700-1800	1600-1700
One-way flow at PM peak hour	380	370	430	400
T - % (PM)	-	-	-	-
Prop.of commercial vehicles - 16 hr.	-	-	-	-

WEST BOUND				
A.A.D.T.	5690	5700	6090	5310
R 12 / 24 - %	74.9	75.8	71.4	73.8
R 16 / 24 - %	93.1	93.7	91.5	91.7
AM Peak Hour	0900-1000	0800-0900	0900-1000	0900-1000
One-way flow at AM peak hour	370	400	360	270
T - % (AM)	-	-	-	-
PM Peak Hour	1700-1800	1700-1800	1700-1800	1600-1700
One-way flow at PM peak hour	380	380	430	400
T - % (PM)	-	-	-	-
Prop.of commercial vehicles - 16 hr.	-	-	-	-

3. OTHER INFORMATION AND COMMENT