

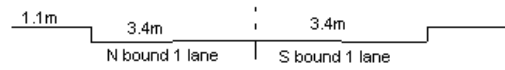
YEAR 2005

CORE STATION 1015

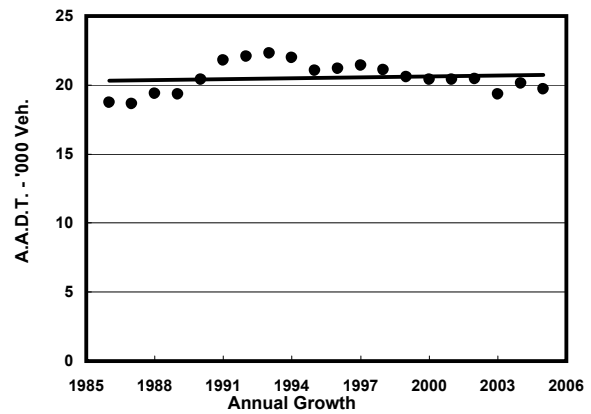
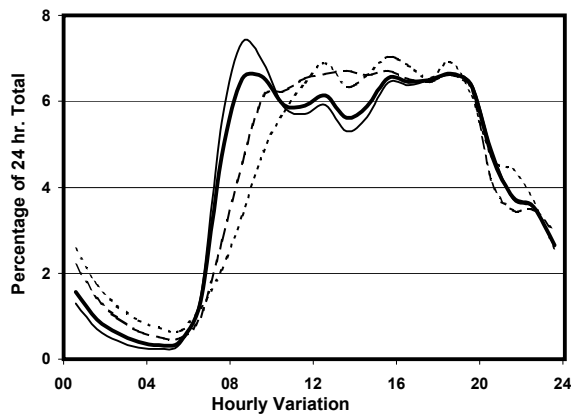
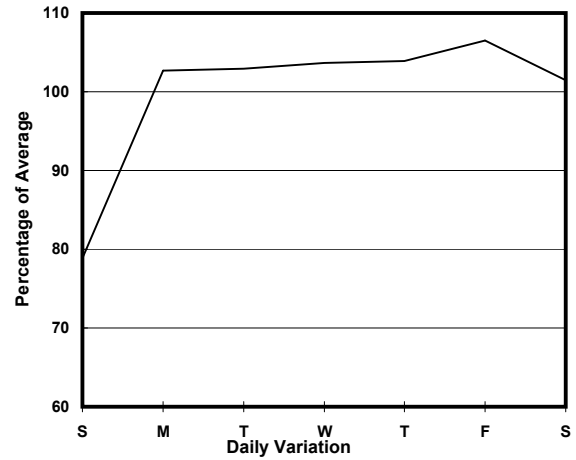
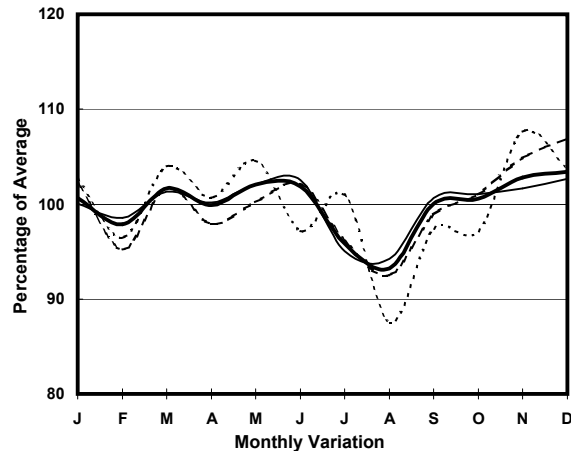
ROAD NETWORK MAJOR

ROAD TYPE DISTRICT DISTRIBUTOR

LINK STUBBS RD (from QUEEN'S RD E to STUBBS RD FO
<H119> NORTHERN END)



1. TRAFFIC FLOW VARIATION AND GROWTH



— All day - - - - - Mon.- Fri. - - - - - Sat. Sun.

2. TRAFFIC CHARACTERISTICS (BY DIRECTION)

Parameter	All - Day	Mon. - Fri.	Sat.	Sun.
SOUTH BOUND				
A.A.D.T.	8240	8660	8310	6620
R 12 / 24 - %	71.8	72.2	71.9	68.8
R 16 / 24 - %	91.5	92.4	89.6	88.3
AM Peak Hour	0900-1000	0900-1000	0900-1000	0900-1000
One-way flow at AM peak hour	540	580	540	360
T - % (AM)	-	-	-	-
PM Peak Hour	1800-1900	1800-1900	1600-1700	1600-1700
One-way flow at PM peak hour	540	570	540	450
T - % (PM)	-	-	-	-
Prop.of commercial vehicles - 16 hr.	-	-	-	-

NORTH BOUND				
A.A.D.T.	11490	12050	11920	9120
R 12 / 24 - %	74.5	75.5	73	70.2
R 16 / 24 - %	92	92.9	90.1	88.6
AM Peak Hour	0800-0900	0800-0900	0900-1000	0900-1000
One-way flow at AM peak hour	830	1000	700	400
T - % (AM)	-	-	-	-
PM Peak Hour	1700-1800	1700-1800	1800-1900	1800-1900
One-way flow at PM peak hour	790	830	830	680
T - % (PM)	-	-	-	-
Prop.of commercial vehicles - 16 hr.	-	-	-	-

3. OTHER INFORMATION AND COMMENT