

YEAR 2005

CORE STATION 1028

ROAD NETWORK MAJOR

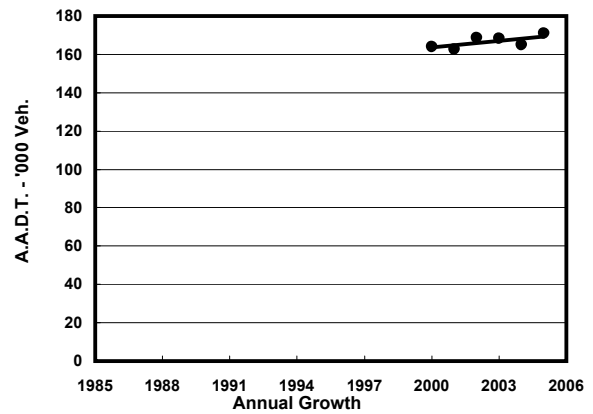
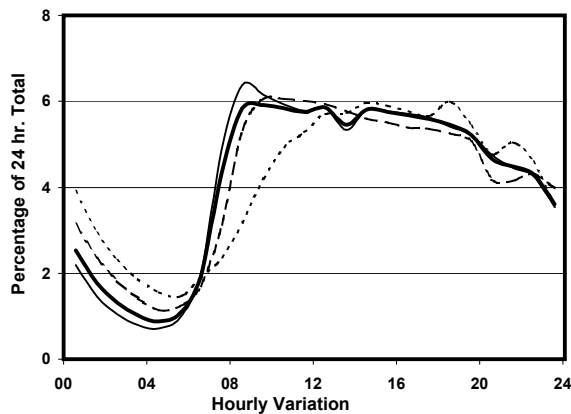
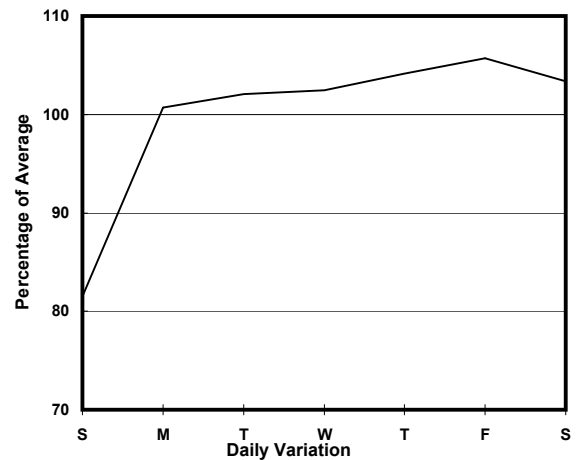
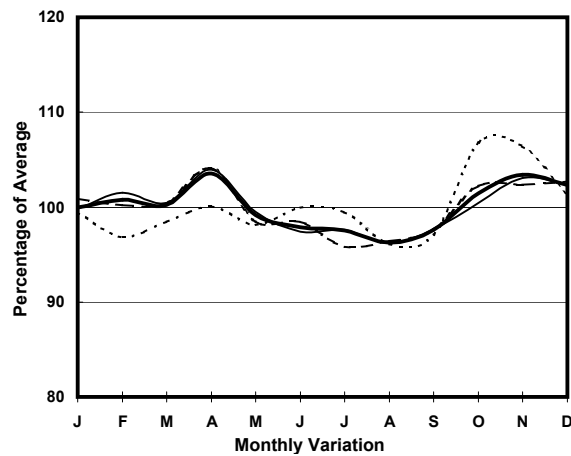
ROAD TYPE URBAN TRUNK ROAD

LINK GLOUCESTER RD (from ARSENAL ST to CROSS HARBOUR TUNNEL S. INT)

6.5m 15.8m 2.8m 19m 5.3m

E bound 5 lanes W bound 5 lanes

1. TRAFFIC FLOW VARIATION AND GROWTH



— All day - - - Mon.- Fri. . . . Sat. - . - Sun.

2. TRAFFIC CHARACTERISTICS (BY DIRECTION)

Parameter	All - Day	Mon. - Fri.	Sat.	Sun.
EAST BOUND				
A.A.D.T.	78220	81740	78760	64900
R 12 / 24 - %	67.2	68.5	65.1	61.6
R 16 / 24 - %	86.8	88.3	83.3	81.8
AM Peak Hour	0900-1000	0900-1000	0900-1000	0900-1000
One-way flow at AM peak hour	4680	5190	4630	2510
T - % (AM)	-	-	-	-
PM Peak Hour	1600-1700	1600-1700	1600-1700	1800-1900
One-way flow at PM peak hour	4470	4650	4310	4010
T - % (PM)	-	-	-	-
Prop.of commercial vehicles - 16 hr.	-	-	-	-
WEST BOUND				
A.A.D.T.	92640	95830	99560	75600
R 12 / 24 - %	67.3	68.8	65.8	60
R 16 / 24 - %	85.2	86.5	83.1	79.5
AM Peak Hour	0800-0900	0800-0900	0900-1000	0900-1000
One-way flow at AM peak hour	5540	6210	6190	3380
T - % (AM)	-	-	-	-
PM Peak Hour	1700-1800	1700-1800	1700-1800	1800-1900
One-way flow at PM peak hour	5270	5530	5330	4430
T - % (PM)	-	-	-	-
Prop.of commercial vehicles - 16 hr.	-	-	-	-

3. OTHER INFORMATION AND COMMENT