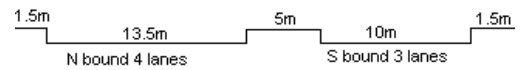


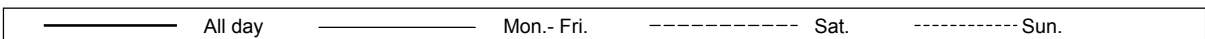
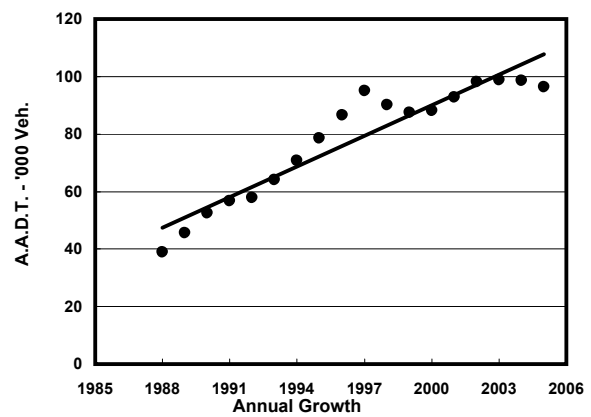
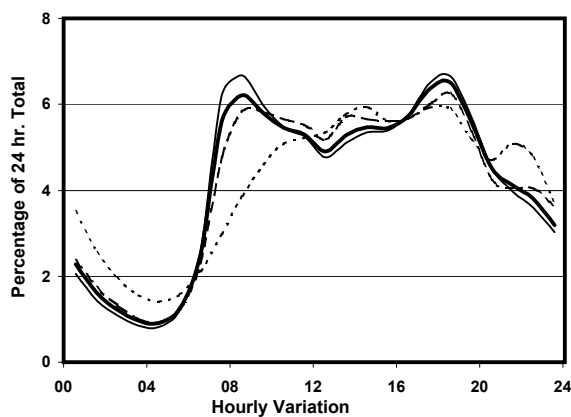
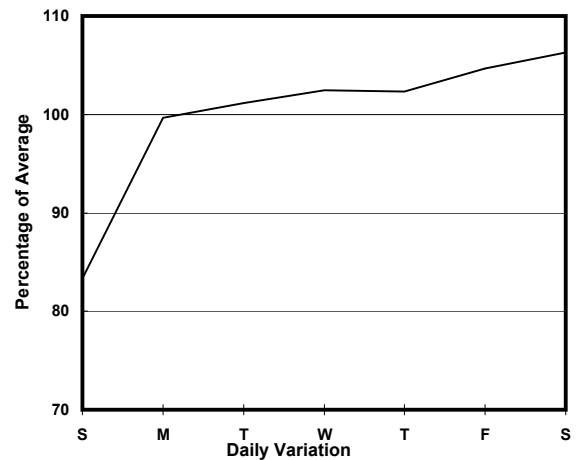
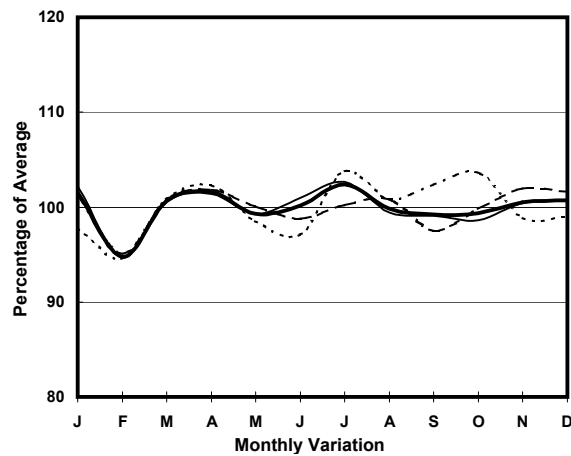
YEAR

2005

LINK TUEN MUN RD (from PUI TO RD to CHUNG WONG TOI INT)

CORE STATION
ROAD NETWORK
ROAD TYPE5001
MAJOR
EXPRESSWAY

1. TRAFFIC FLOW VARIATION AND GROWTH



2. TRAFFIC CHARACTERISTICS (BY DIRECTION)

Parameter	All - Day	Mon. - Fri.	Sat.	Sun.
SOUTH BOUND				
A.A.D.T.	43840	45190	47120	36300
R 12 / 24 - %	71	72.1	70.5	65
R 16 / 24 - %	86.8	87.5	86.4	83.3
AM Peak Hour	0800-0900	0700-0800	0800-0900	0900-1000
One-way flow at AM peak hour	3110	3540	3270	1860
T - % (AM)	-	-	-	-
PM Peak Hour	1800-1900	1800-1900	1800-1900	1800-1900
One-way flow at PM peak hour	2780	2920	2870	2130
T - % (PM)	-	-	-	-
Prop.of commercial vehicles - 16 hr.	-	-	-	-

NORTH BOUND				
A.A.D.T.	52450	53890	56160	44540
R 12 / 24 - %	65.6	66.6	65.4	59.5
R 16 / 24 - %	85.4	86.4	84.7	80.4
AM Peak Hour	0800-0900	0800-0900	0900-1000	0900-1000
One-way flow at AM peak hour	2880	3200	2930	1870
T - % (AM)	-	-	-	-
PM Peak Hour	1800-1900	1800-1900	1800-1900	1700-1800
One-way flow at PM peak hour	3490	3680	3600	2700
T - % (PM)	-	-	-	-
Prop.of commercial vehicles - 16 hr.	-	-	-	-

3. OTHER INFORMATION AND COMMENT