

YEAR 2005

CORE STATION 5019

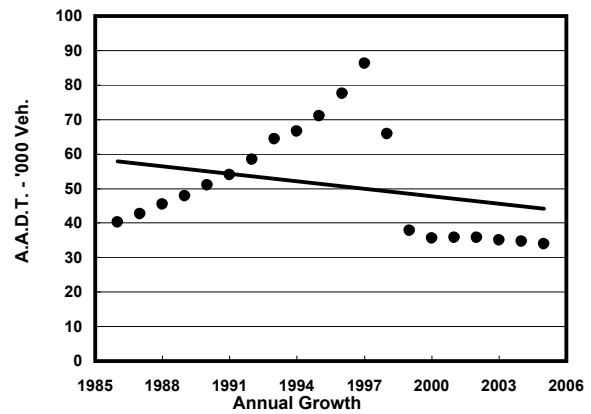
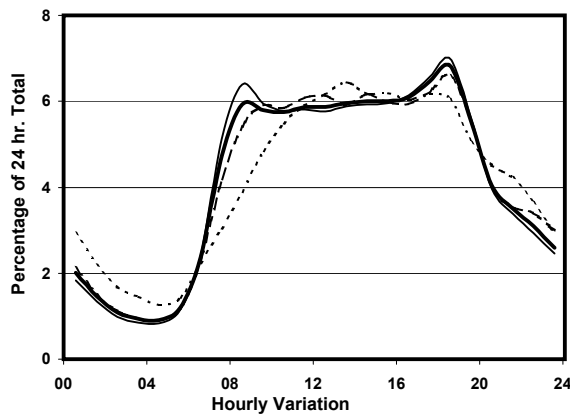
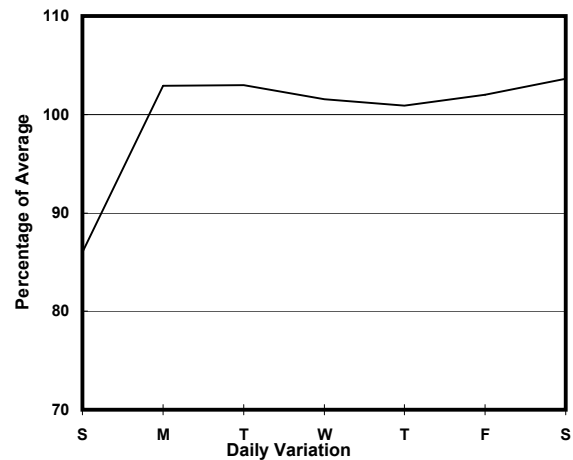
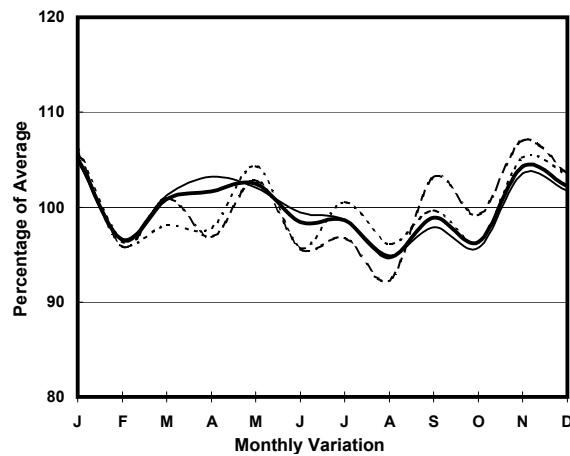
ROAD NETWORK MAJOR

ROAD TYPE RURAL TRUNK ROAD

LINK CASTLE PEAK RD - YUEN LONG (from YUEN LONG ON LOK RD to KAM TIN RD)

2.0m 1.5m 10.4m 1.5m 10.4m 1.5m 2.0m  
Cycle Track W bound 3 lanes E bound 3 lanes Cycle Track

### 1. TRAFFIC FLOW VARIATION AND GROWTH



— All day    - - - Mon.- Fri.    . . . Sat.    - . - Sun.

### 2. TRAFFIC CHARACTERISTICS (BY DIRECTION)

Parameter	All - Day	Mon. - Fri.	Sat.	Sun.
<b>EAST BOUND</b>				
A.A.D.T.	15450	15860	15950	13640
R 12 / 24 - %	70.9	72	70	65.7
R 16 / 24 - %	87	87.6	86.5	83.7
AM Peak Hour	0800-0900	0800-0900	0900-1000	0900-1000
One-way flow at AM peak hour	950	1060	970	630
T - % (AM)	-	-	-	-
PM Peak Hour	1700-1800	1700-1800	1600-1700	1600-1700
One-way flow at PM peak hour	990	1030	990	860
T - % (PM)	-	-	-	-
Prop.of commercial vehicles - 16 hr.	-	-	-	-
<b>WEST BOUND</b>				
A.A.D.T.	18550	19080	19550	15750
R 12 / 24 - %	71.6	72.5	70.8	67.1
R 16 / 24 - %	87.8	88.6	87.2	84.1
AM Peak Hour	0800-0900	0800-0900	0900-1000	0900-1000
One-way flow at AM peak hour	1070	1170	1130	800
T - % (AM)	-	-	-	-
PM Peak Hour	1800-1900	1800-1900	1800-1900	1800-1900
One-way flow at PM peak hour	1390	1480	1430	980
T - % (PM)	-	-	-	-
Prop.of commercial vehicles - 16 hr.	-	-	-	-

### 3. OTHER INFORMATION AND COMMENT