

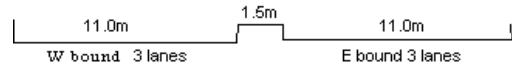
YEAR 2005

CORE STATION 5031

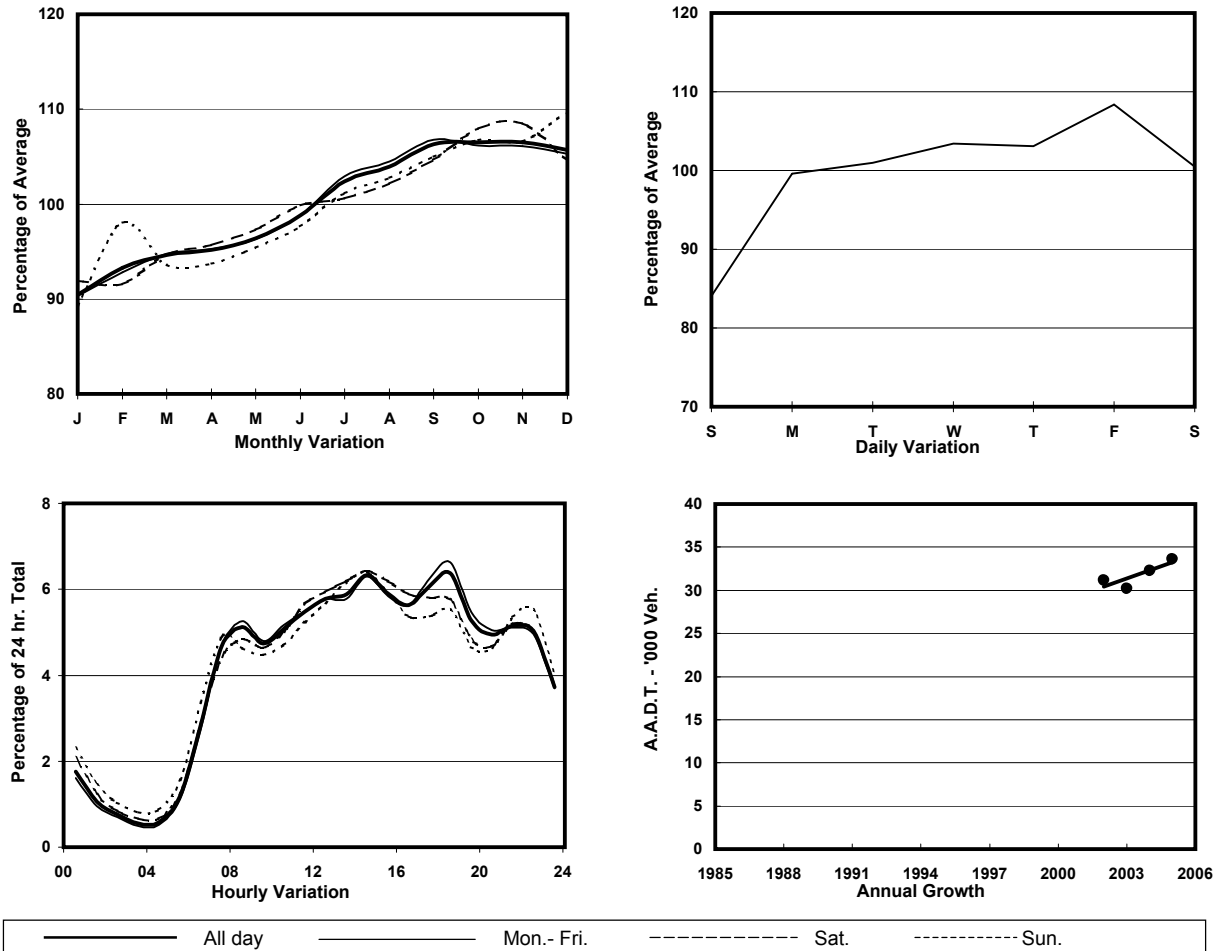
ROAD NETWORK MAJOR

ROAD TYPE EXPRESSWAY

LINK NORTH LANTAU HIGHWAY (from TUNG CHUNG
EASTERN INT to WESTERN END AT CHEK LAP KOK)



1. TRAFFIC FLOW VARIATION AND GROWTH



2. TRAFFIC CHARACTERISTICS (BY DIRECTION)

Parameter	All - Day	Mon. - Fri.	Sat.	Sun.
EAST BOUND				
A.A.D.T.	16710	17270	17040	14450
R 12 / 24 - %	64.7	65.1	64.9	62
R 16 / 24 - %	86.1	86.8	85.2	83.1
AM Peak Hour	0800-0900	0800-0900	0800-0900	0800-0900
One-way flow at AM peak hour	680	680	730	630
T - % (AM)	-	-	-	-
PM Peak Hour	1800-1900	1800-1900	1800-1900	1800-1900
One-way flow at PM peak hour	1220	1330	1090	870
T - % (PM)	-	-	-	-
Prop.of commercial vehicles - 16 hr.	-	-	-	-
WEST BOUND				
A.A.D.T.	16890	17620	17040	13980
R 12 / 24 - %	69.5	70.1	68.8	66.8
R 16 / 24 - %	89	89.6	88	86.2
AM Peak Hour	0800-0900	0800-0900	0900-1000	0700-0800
One-way flow at AM peak hour	1050	1150	940	850
T - % (AM)	-	-	-	-
PM Peak Hour	1700-1800	1700-1800	1600-1700	1700-1800
One-way flow at PM peak hour	940	990	960	740
T - % (PM)	-	-	-	-
Prop.of commercial vehicles - 16 hr.	-	-	-	-

3. OTHER INFORMATION AND COMMENT