

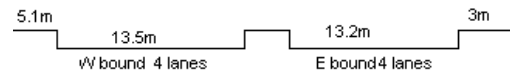
YEAR 2005

COVERAGE (B) STATION 2207

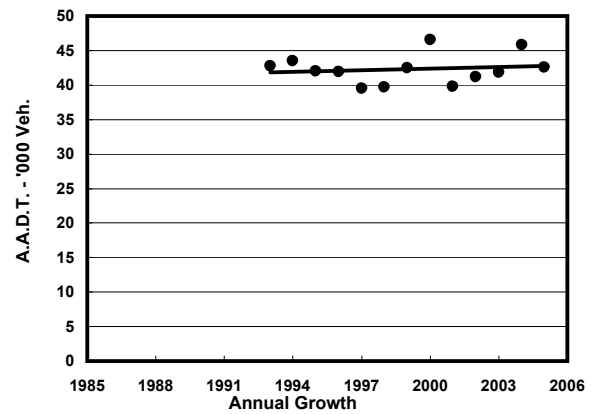
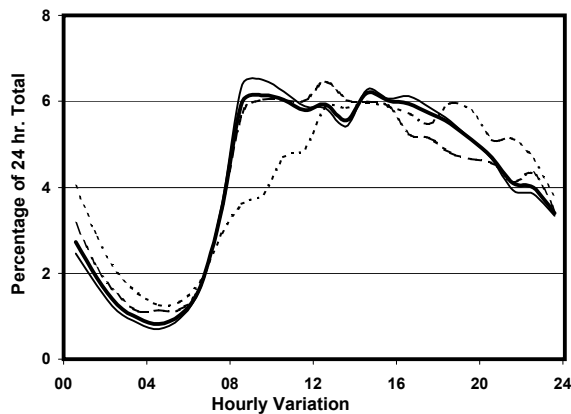
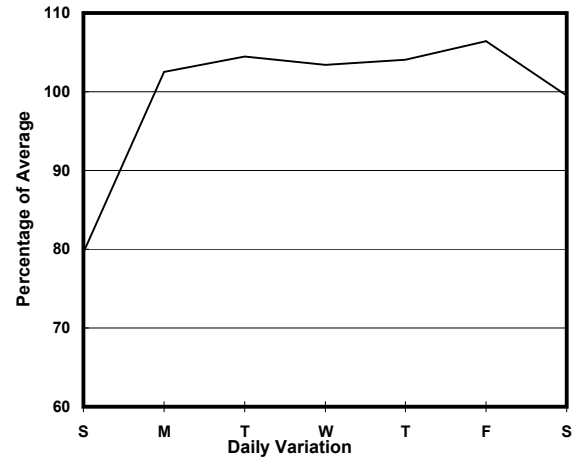
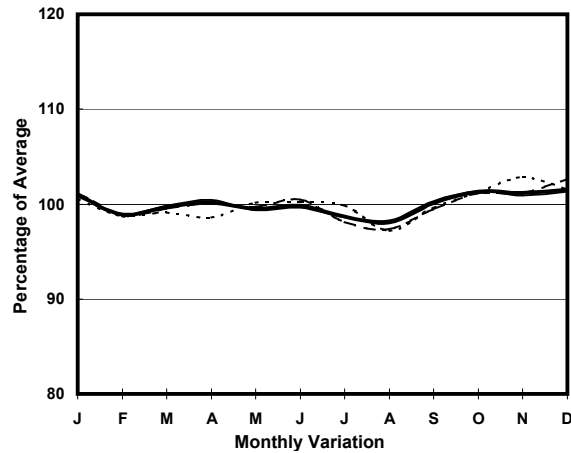
ROAD NETWORK MAJOR

ROAD TYPE PRIMARY DISTRIBUTOR

LINK CONNAUGHT RD C (from CLEVERLY ST to GILMAN ST)



1. TRAFFIC FLOW VARIATION AND GROWTH



— All day - - - - - Mon.- Fri. - - - - - Sat. Sun.

2. TRAFFIC CHARACTERISTICS (BY DIRECTION)

Parameter	All - Day	Mon. - Fri.	Sat.	Sun.
EAST BOUND				
A.A.D.T.	25930	27150	26480	21020
R 12 / 24 - %	65.5	66.8	64.5	58
R 16 / 24 - %	84.4	85.6	82.4	79.1
AM Peak Hour	0800-0900	0800-0900	0800-0900	0900-1000
One-way flow at AM peak hour	1560	1740	1540	830
T - % (AM)	-	32.8	-	-
PM Peak Hour	1600-1700	1600-1700	1600-1700	1800-1900
One-way flow at PM peak hour	1460	1570	1370	1170
T - % (PM)	-	15	-	-
Prop.of commercial vehicles - 16 hr.	-	18.1	-	-
WEST BOUND				
A.A.D.T.	16650	17630	16290	13180
R 12 / 24 - %	72.7	74.1	71	65.1
R 16 / 24 - %	89	89.7	88.3	85.1
AM Peak Hour	0900-1000	0900-1000	0900-1000	0900-1000
One-way flow at AM peak hour	1110	1250	1060	490
T - % (AM)	-	14.9	-	-
PM Peak Hour	1600-1700	1600-1700	1700-1800	1800-1900
One-way flow at PM peak hour	1070	1170	870	870
T - % (PM)	-	11.7	-	-
Prop.of commercial vehicles - 16 hr.	-	13.5	-	-

3. OTHER INFORMATION AND COMMENT

4. Vehicle classification and occupancy - Monday to Friday

Time		Class of vehicle									
		Motor	Private	Taxi	Private	PLB	Goods veh.		Non	Fr. Bus	
		Cycle	Car		LB		Light	M & H	Fr. Bus	SD	DD
0700-0800	Pro	2.8	5.6	46.3	0.6	6.7	12.3	2.5	4.7	0.3	18.3
	Ocp	1.0	1.3	1.7	2.5	10.3	1.3	1.3	20.9	8.6	18.1
0800-0900	Pro	1.8	18.7	37.8	1.2	3.4	9.7	1.5	10.4	0.2	15.4
	Ocp	1.1	1.4	1.7	4.0	13.4	1.7	2.0	28.8	13.8	25.5
0900-1000 Peak hour	Pro	3.6	19.4	40.3	2.1	2.6	14.7	2.4	2.4	0.2	12.2
	Ocp	1.1	1.6	1.8	2.9	10.3	1.7	1.5	15.7	10.0	14.4
1000-1100	Pro	3.4	22.0	33.3	1.2	3.1	22.1	2.8	1.2	0.2	10.6
	Ocp	1.0	1.5	1.7	2.8	6.9	1.6	1.7	9.4	3.8	13.4
1100-1200	Pro	1.9	25.1	28.8	1.4	3.5	23.3	4.8	0.9	0.2	10.1
	Ocp	1.1	1.6	2.0	2.6	8.6	1.8	1.7	13.6	6.6	12.9
1200-1300	Pro	3.1	24.6	35.0	1.3	3.1	19.1	3.3	0.6	0.3	9.6
	Ocp	1.1	1.5	2.0	2.5	7.4	1.7	1.8	15.8	5.1	11.3
1300-1400	Pro	1.6	29.0	36.4	1.1	2.7	15.2	3.4	0.7	0.2	9.8
	Ocp	1.1	1.5	1.8	2.3	9.1	1.7	1.6	5.8	5.8	10.9
1400-1500	Pro	3.3	25.8	34.6	1.5	2.6	19.5	2.0	0.8	0.2	9.6
	Ocp	1.2	1.4	1.7	3.8	9.1	1.6	1.6	5.4	4.2	12.1
1500-1600	Pro	1.5	26.3	37.0	0.9	2.5	19.3	2.4	1.0	0.2	8.8
	Ocp	1.0	1.5	1.9	2.8	8.3	1.7	1.9	3.6	6.0	11.0
1600-1700	Pro	3.0	28.1	34.2	1.9	2.7	16.4	1.1	1.7	0.2	10.7
	Ocp	1.1	1.6	1.8	2.4	6.5	1.7	1.9	3.1	6.5	11.2
1700-1800	Pro	3.3	30.7	40.2	0.8	2.9	8.1	0.6	1.1	0.2	12.2
	Ocp	1.1	1.7	1.6	1.8	9.0	1.6	1.3	4.0	5.5	13.6
1800-1900	Pro	4.4	30.8	35.6	0.5	2.3	7.6	1.2	3.7	0.3	13.6
	Ocp	1.1	1.5	2.0	3.0	9.5	1.6	1.8	16.9	8.5	15.3
1900-2000	Pro	1.5	33.8	39.2	0.4	2.5	4.2	0.4	1.0	0.3	16.7
	Ocp	1.1	1.6	1.9	1.0	9.1	1.5	2.0	17.2	5.0	9.9
2000-2100	Pro	1.1	23.8	53.5	0.7	4.0	2.9	0.4	0.4	0.1	13.1
	Ocp	1.2	1.7	1.7	1.0	9.5	1.6	2.0	37.5	4.0	8.7
2100-2200	Pro	2.6	21.9	53.4	0.2	3.1	3.4	0.2	1.0	0.1	14.0
	Ocp	1.1	1.6	1.8	2.0	6.5	2.0	1.0	25.8	6.0	7.6
2200-2300	Pro	3.0	24.8	51.0	1.0	3.0	2.2	0.2	0.2	0.1	14.5
	Ocp	1.2	2.0	1.9	2.5	4.9	1.8	2.0	6.0	4.0	7.9
16 hours	Pro	2.6	24.6	38.9	1.1	3.1	13.3	1.9	2.1	0.2	12.1
	Ocp	1.1	1.6	1.8	2.7	8.8	1.7	1.7	19.3	6.7	13.3

Legend

- Pro.** Proportion of vehicles in % (Sum may not add up to 100% due to figure rounding)
- Ocp.** Average occupancy of vehicles
- M&H** Medium and Heavy