

YEAR

2005

LINK COCHRANE ST (from QUEEN'S RD C to WELLINGTON ST)

COVERAGE (B) STATION

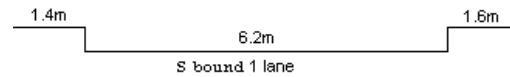
2405

ROAD NETWORK

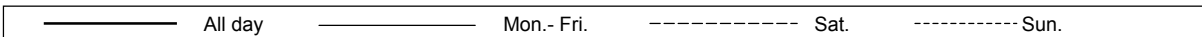
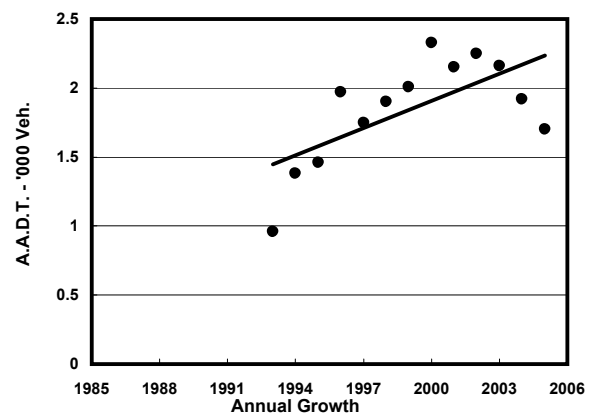
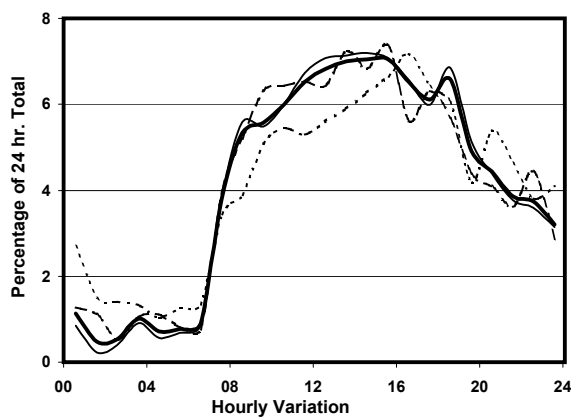
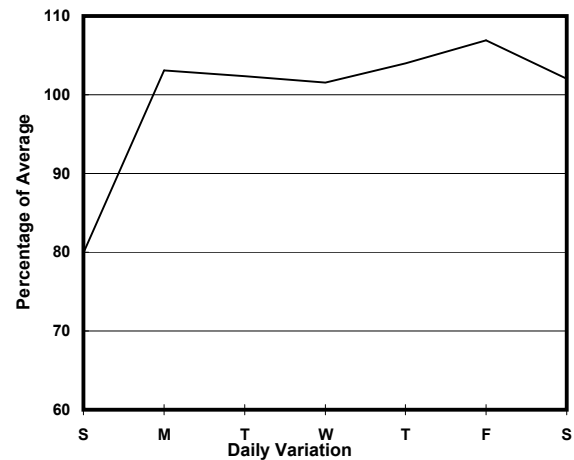
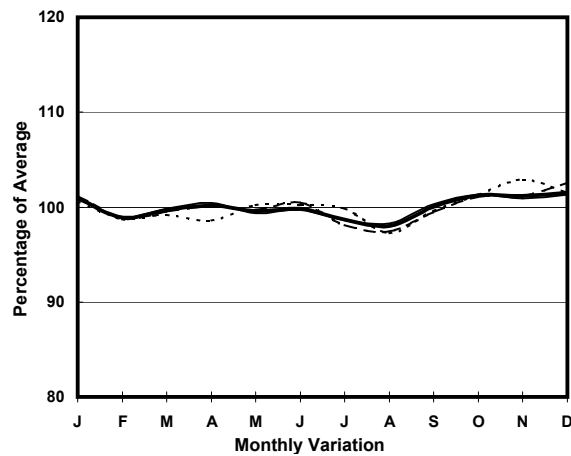
MINOR

ROAD TYPE

LOCAL DISTRIBUTOR



1. TRAFFIC FLOW VARIATION AND GROWTH



2. TRAFFIC CHARACTERISTICS (BY DIRECTION)

Parameter	All - Day	Mon. - Fri.	Sat.	Sun.
SOUTH BOUND				
A.A.D.T.	1700	1780	1760	1380
R 12 / 24 - %	74.3	75.5	73.9	67.3
R 16 / 24 - %	91.3	92.4	90.5	85.3
AM Peak Hour	0900-1000	0800-0900	0900-1000	0900-1000
One-way flow at AM peak hour	100	100	110	70
T - % (AM)	-	-	-	-
PM Peak Hour	1800-1900	1800-1900	1700-1800	1600-1700
One-way flow at PM peak hour	110	120	110	100
T - % (PM)	-	-	-	-
Prop.of commercial vehicles - 16 hr.	-	1.2	-	-

A.A.D.T.	-	-	-	-
R 12 / 24 - %	-	-	-	-
R 16 / 24 - %	-	-	-	-
AM Peak Hour	-	-	-	-
One-way flow at AM peak hour	-	-	-	-
T - % (AM)	-	-	-	-
PM Peak Hour	-	-	-	-
One-way flow at PM peak hour	-	-	-	-
T - % (PM)	-	-	-	-
Prop.of commercial vehicles - 16 hr.	-	-	-	-

3. OTHER INFORMATION AND COMMENT

Coverage (B) Station 2405
Year 2005

4. Vehicle classification and occupancy - Monday to Friday

Time		Class of vehicle									
		Motor	Private	Taxi	Private	PLB	Goods veh.		Non	Fr. Bus	
		Cycle	Car		LB		Light	M & H	Fr. Bus	SD	DD
0700-0800	Pro	0.0	0.0	0.0	0.0	66.7	33.3	0.0	0.0	0.0	0.0
	Ocp	0.0	0.0	0.0	0.0	7.8	1.5	0.0	0.0	0.0	0.0
0800-0900	Pro	0.0	0.0	0.0	0.0	87.5	12.5	0.0	0.0	0.0	0.0
	Ocp	0.0	0.0	0.0	0.0	8.4	2.0	0.0	0.0	0.0	0.0
0900-1000	Pro	0.0	0.0	11.1	0.0	88.9	0.0	0.0	0.0	0.0	0.0
	Ocp	0.0	0.0	1.0	0.0	6.3	0.0	0.0	0.0	0.0	0.0
1000-1100	Pro	0.0	12.5	0.0	0.0	50.0	37.5	0.0	0.0	0.0	0.0
	Ocp	0.0	1.0	0.0	0.0	5.0	1.3	0.0	0.0	0.0	0.0
1100-1200	Pro	0.0	0.0	10.0	0.0	80.0	10.0	0.0	0.0	0.0	0.0
	Ocp	0.0	0.0	1.0	0.0	5.3	2.0	0.0	0.0	0.0	0.0
1200-1300	Pro	0.0	21.4	14.3	0.0	50.0	14.3	0.0	0.0	0.0	0.0
	Ocp	0.0	1.3	1.0	0.0	5.7	1.5	0.0	0.0	0.0	0.0
1300-1400	Pro	0.0	14.3	0.0	0.0	71.4	14.3	0.0	0.0	0.0	0.0
	Ocp	0.0	1.0	0.0	0.0	8.2	1.0	0.0	0.0	0.0	0.0
1400-1500 Peak hour	Pro	0.0	11.1	0.0	0.0	77.8	0.0	11.1	0.0	0.0	0.0
	Ocp	0.0	2.0	0.0	0.0	7.3	0.0	2.0	0.0	0.0	0.0
1500-1600	Pro	0.0	12.5	6.3	0.0	56.3	18.8	6.3	0.0	0.0	0.0
	Ocp	0.0	2.0	1.0	0.0	8.3	2.3	2.0	0.0	0.0	0.0
1600-1700	Pro	0.0	9.1	0.0	0.0	81.8	9.1	0.0	0.0	0.0	0.0
	Ocp	0.0	2.0	0.0	0.0	8.2	2.0	0.0	0.0	0.0	0.0
1700-1800	Pro	0.0	0.0	0.0	0.0	72.7	27.3	0.0	0.0	0.0	0.0
	Ocp	0.0	0.0	0.0	0.0	10.3	1.3	0.0	0.0	0.0	0.0
1800-1900	Pro	0.0	6.3	6.3	0.0	62.5	25.0	0.0	0.0	0.0	0.0
	Ocp	0.0	2.0	1.0	0.0	14.8	1.3	0.0	0.0	0.0	0.0
1900-2000	Pro	0.0	8.3	16.7	0.0	66.7	8.3	0.0	0.0	0.0	0.0
	Ocp	0.0	3.0	1.5	0.0	12.8	2.0	0.0	0.0	0.0	0.0
2000-2100	Pro	0.0	16.7	0.0	0.0	83.3	0.0	0.0	0.0	0.0	0.0
	Ocp	0.0	2.0	0.0	0.0	16.6	0.0	0.0	0.0	0.0	0.0
2100-2200	Pro	6.7	13.3	13.3	0.0	60.0	6.7	0.0	0.0	0.0	0.0
	Ocp	1.0	2.0	1.0	0.0	12.9	4.0	0.0	0.0	0.0	0.0
2200-2300	Pro	0.0	37.5	0.0	0.0	62.5	0.0	0.0	0.0	0.0	0.0
	Ocp	0.0	1.7	0.0	0.0	16.8	0.0	0.0	0.0	0.0	0.0
16 hours	Pro	0.6	9.9	5.8	0.0	68.0	14.5	1.2	0.0	0.0	0.0
	Ocp	1.0	1.8	1.1	0.0	9.7	1.7	2.0	0.0	0.0	0.0

Legend

Pro. Proportion of vehicles in % (Sum may not add up to 100% due to figure rounding)
Ocp. Average occupancy of vehicles
M&H Medium and Heavy