

YEAR 2005

LINK

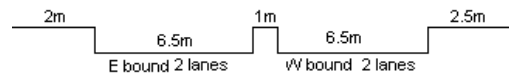
CORNWALL ST (from WATERLOO RD to NAM CHEONG ST)

COVERAGE (B) STATION 4206

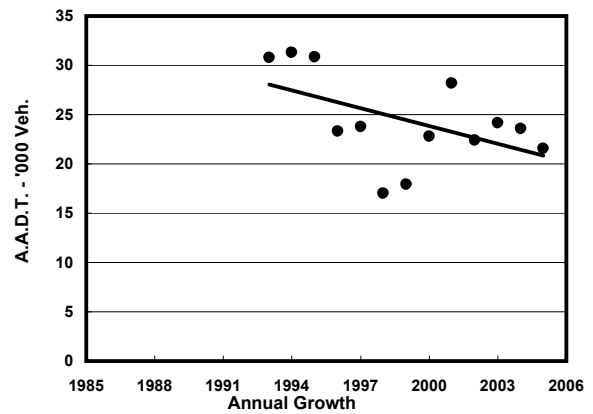
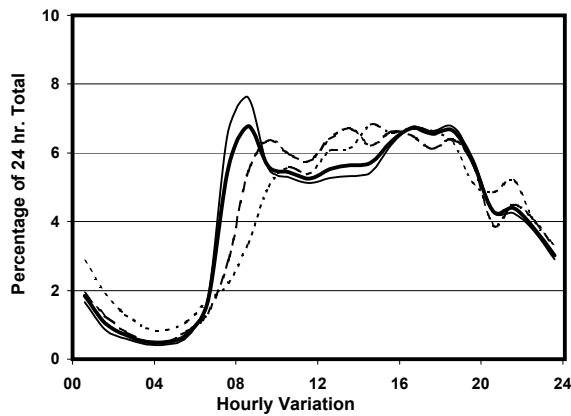
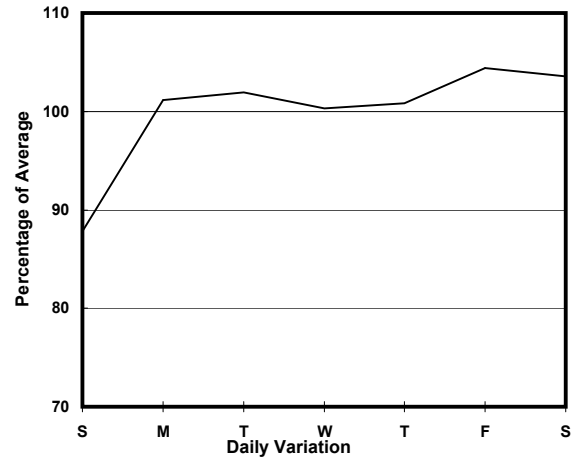
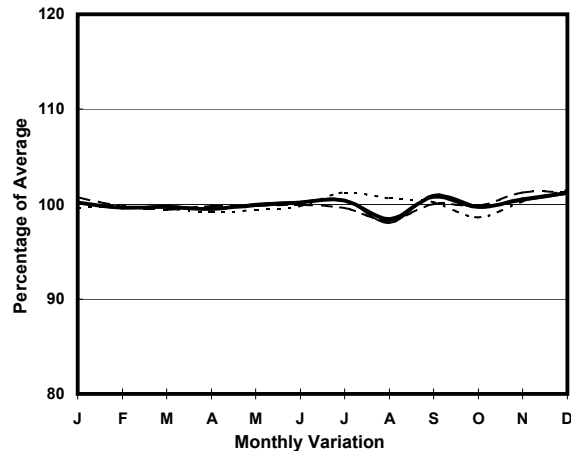
ROAD NETWORK MAJOR

ROAD TYPE DISTRICT DISTRIBUTOR

CORNWALL ST (from WATERLOO RD to NAM CHEONG ST)



1. TRAFFIC FLOW VARIATION AND GROWTH



— All day — Mon.- Fri. - - - - - Sat. - - - - - Sun.

2. TRAFFIC CHARACTERISTICS (BY DIRECTION)

Parameter	All - Day	Mon. - Fri.	Sat.	Sun.
EAST BOUND				
A.A.D.T.	10480	10680	10900	9510
R 12 / 24 - %	72.4	73.4	71.4	68
R 16 / 24 - %	89.7	90.4	89.2	85.8
AM Peak Hour	0800-0900	0800-0900	0900-1000	0900-1000
One-way flow at AM peak hour	730	820	710	530
T - % (AM)	-	14	-	-
PM Peak Hour	1800-1900	1800-1900	1800-1900	1800-1900
One-way flow at PM peak hour	700	740	680	600
T - % (PM)	-	7.3	-	-
Prop.of commercial vehicles - 16 hr.	-	14.6	-	-
WEST BOUND				
A.A.D.T.	11080	11370	11570	9530
R 12 / 24 - %	71.2	72	71.6	65.8
R 16 / 24 - %	90.3	91	89.9	86.4
AM Peak Hour	0800-0900	0800-0900	0900-1000	0900-1000
One-way flow at AM peak hour	740	860	720	430
T - % (AM)	-	10.2	-	-
PM Peak Hour	1600-1700	1600-1700	1600-1700	1600-1700
One-way flow at PM peak hour	790	800	840	710
T - % (PM)	-	11.8	-	-
Prop.of commercial vehicles - 16 hr.	-	10.1	-	-

3. OTHER INFORMATION AND COMMENT

Coverage (B) Station 4206
Year 2005

4. Vehicle classification and occupancy - Monday to Friday

Time		Class of vehicle									
		Motor	Private	Taxi	Private	PLB	Goods veh.		Non	Fr. Bus	
		Cycle	Car		LB		Light	M & H	Fr. Bus	SD	DD
0700-0800	Pro	5.3	36.1	21.4	3.4	0.0	7.9	1.9	20.3	0.4	3.5
	Ocp	1.0	1.6	1.9	9.6	0.0	1.6	1.0	13.8	1.8	53.0
0800-0900 Peak hour	Pro	3.3	54.2	20.5	2.4	0.0	7.5	1.8	7.7	0.1	2.5
	Ocp	1.0	1.5	1.9	4.5	0.0	1.7	1.3	17.8	2.0	53.0
0900-1000	Pro	1.7	61.1	11.8	0.8	0.6	17.4	1.4	2.2	0.1	3.0
	Ocp	1.2	1.4	1.7	1.7	1.0	1.8	1.8	4.9	1.0	32.2
1000-1100	Pro	3.6	41.8	16.6	1.4	0.4	24.9	5.4	2.9	0.0	3.1
	Ocp	1.0	1.4	1.7	2.5	1.0	1.6	1.5	5.5	0.0	25.0
1100-1200	Pro	3.9	38.4	21.3	1.2	0.0	24.4	1.2	6.6	0.0	3.1
	Ocp	1.0	1.6	1.9	3.7	0.0	1.8	1.7	5.2	0.0	27.6
1200-1300	Pro	1.7	43.6	18.6	3.0	0.0	19.0	3.3	8.3	0.0	2.6
	Ocp	1.0	1.5	1.6	6.6	0.0	1.6	1.4	17.5	0.0	30.1
1300-1400	Pro	2.6	45.9	22.5	1.3	0.0	15.5	2.0	7.3	0.0	2.9
	Ocp	1.1	1.6	2.0	4.3	0.0	1.7	1.3	7.2	0.0	32.3
1400-1500	Pro	5.4	44.0	16.1	2.5	0.0	21.8	2.9	4.7	0.0	2.7
	Ocp	1.1	1.6	1.9	1.7	0.0	1.6	1.6	5.7	0.0	34.1
1500-1600	Pro	2.4	41.4	14.4	2.9	0.0	13.5	18.0	5.5	0.0	1.9
	Ocp	1.2	1.6	1.7	5.3	0.0	1.7	1.5	13.9	0.0	31.5
1600-1700	Pro	2.9	45.0	22.9	2.0	0.0	13.6	2.6	8.1	0.0	2.8
	Ocp	1.1	1.6	1.7	2.4	0.0	1.7	1.3	7.3	0.0	39.8
1700-1800	Pro	3.7	49.3	15.2	1.9	0.0	16.7	2.2	7.8	0.0	3.3
	Ocp	1.0	1.5	2.1	6.0	0.0	1.8	1.3	8.2	0.0	48.7
1800-1900	Pro	6.4	56.1	18.6	0.6	0.0	10.4	0.6	4.6	0.0	2.8
	Ocp	1.0	1.7	1.9	4.5	0.0	1.4	1.5	9.4	0.0	65.8
1900-2000	Pro	3.7	63.7	18.3	0.3	0.0	8.2	0.9	2.4	0.0	2.4
	Ocp	1.3	1.5	1.7	1.0	0.0	1.7	1.0	8.0	0.0	49.5
2000-2100	Pro	5.1	61.1	17.1	0.0	0.0	10.7	0.9	1.3	0.0	3.8
	Ocp	1.3	1.6	1.9	0.0	0.0	1.8	2.0	6.3	0.0	36.4
2100-2200	Pro	3.2	56.8	29.3	0.0	0.0	3.7	0.9	2.3	0.0	3.8
	Ocp	1.4	1.7	1.8	0.0	0.0	1.6	1.0	4.8	0.0	36.2
2200-2300	Pro	4.1	58.2	26.4	0.0	0.0	4.7	0.0	1.2	0.1	5.3
	Ocp	1.0	1.7	1.7	0.0	0.0	2.3	0.0	20.0	1.0	22.4
16 hours	Pro	3.6	49.7	18.9	1.6	0.1	13.9	3.3	6.0	0.1	3.0
	Ocp	1.1	1.5	1.8	4.8	1.0	1.7	1.4	11.1	1.6	39.2

Legend

Pro. Proportion of vehicles in % (Sum may not add up to 100% due to figure rounding)
Ocp. Average occupancy of vehicles
M&H Medium and Heavy