

YEAR

2005

LINK CHATHAM RD N (from WUHU ST to HONG CHONG RD)

COVERAGE (B) STATION

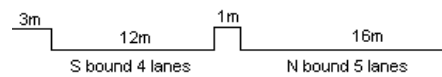
4208

ROAD NETWORK

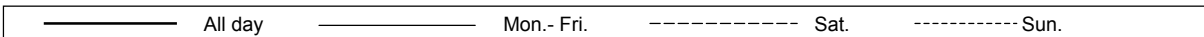
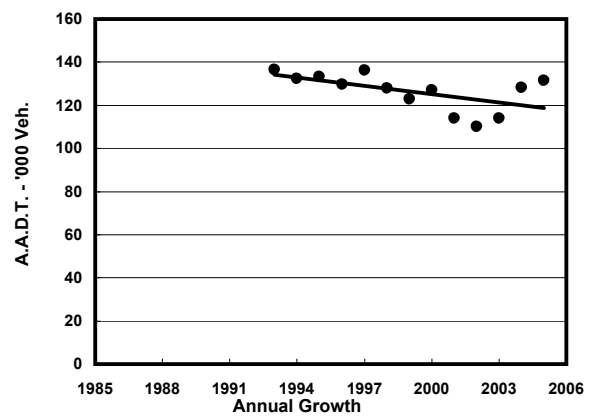
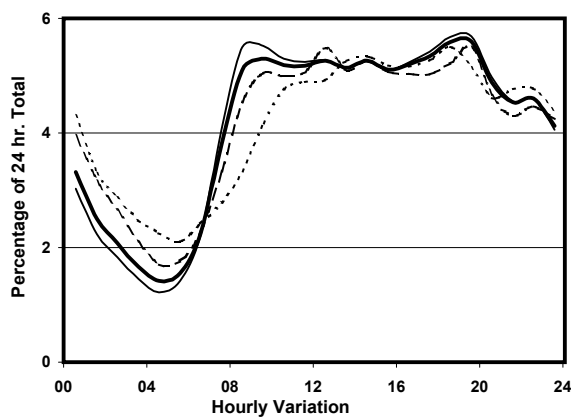
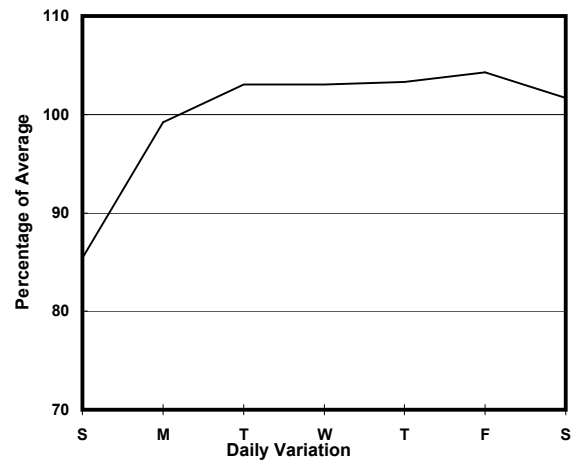
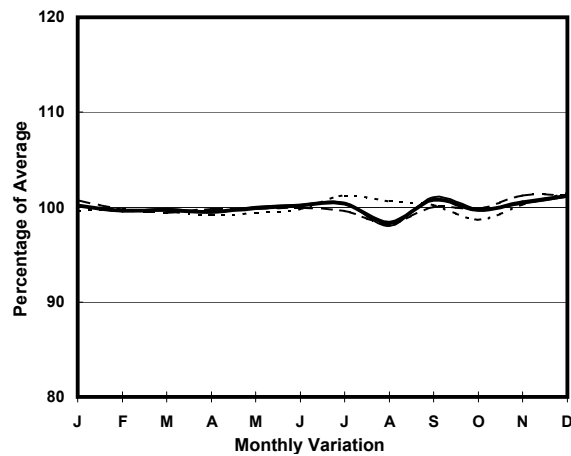
MAJOR

ROAD TYPE

PRIMARY DISTRIBUTOR



1. TRAFFIC FLOW VARIATION AND GROWTH



2. TRAFFIC CHARACTERISTICS (BY DIRECTION)

Parameter	All - Day	Mon. - Fri.	Sat.	Sun.
SOUTH BOUND				
A.A.D.T.	55420	57060	55930	49390
R 12 / 24 - %	60.8	62	57.7	57.7
R 16 / 24 - %	80.2	81.5	76.8	76.1
AM Peak Hour	0800-0900	0800-0900	0800-0900	0900-1000
One-way flow at AM peak hour	3030	3320	2910	2240
T - % (AM)	-	14.9	-	-
PM Peak Hour	1800-1900	1800-1900	1800-1900	1800-1900
One-way flow at PM peak hour	3020	3140	2920	2660
T - % (PM)	-	10.2	-	-
Prop.of commercial vehicles - 16 hr.	-	13	-	-

NORTH BOUND				
A.A.D.T.	76190	78900	78890	63720
R 12 / 24 - %	61.9	63.3	60.3	55.7
R 16 / 24 - %	81.8	83.3	79.1	75.8
AM Peak Hour	0900-1000	0900-1000	0900-1000	0900-1000
One-way flow at AM peak hour	4050	4400	4060	2480
T - % (AM)	-	14.4	-	-
PM Peak Hour	1800-1900	1800-1900	1600-1700	1800-1900
One-way flow at PM peak hour	4340	4580	4240	3570
T - % (PM)	-	11.5	-	-
Prop.of commercial vehicles - 16 hr.	-	14.2	-	-

3. OTHER INFORMATION AND COMMENT

4. Vehicle classification and occupancy - Monday to Friday

Time		Class of vehicle									
		Motor	Private	Taxi	Private	PLB	Goods veh.		Non	Fr. Bus	
		Cycle	Car		LB		Light	M & H	Fr. Bus	SD	DD
0700-0800	Pro	6.0	11.9	28.4	0.7	5.7	24.4	8.3	4.1	0.0	10.4
	Ocp	1.1	1.3	1.7	1.9	8.3	1.5	1.3	3.1	0.0	31.2
0800-0900	Pro	6.3	29.4	27.6	0.6	5.9	16.0	5.3	2.3	0.0	6.6
	Ocp	1.0	1.4	1.8	1.7	13.1	1.6	1.3	14.6	0.0	52.6
0900-1000	Pro	5.1	25.8	24.0	1.3	4.3	23.1	6.8	2.3	0.1	7.2
	Ocp	1.1	1.3	2.0	3.1	11.0	1.6	1.2	12.1	1.0	30.9
1000-1100	Pro	2.8	21.3	27.0	1.1	3.4	30.3	6.2	1.7	0.0	6.2
	Ocp	1.0	1.5	1.7	1.6	9.0	1.6	1.5	4.6	0.0	25.2
1100-1200	Pro	3.4	16.8	27.7	1.1	2.9	32.6	8.2	1.7	0.0	5.7
	Ocp	1.1	1.8	1.9	1.9	8.5	1.6	1.4	8.1	0.0	28.0
1200-1300	Pro	3.5	21.9	22.2	1.0	3.5	32.1	7.8	2.2	0.1	6.0
	Ocp	1.1	1.7	2.1	2.4	8.7	1.6	1.5	6.3	1.0	28.4
1300-1400	Pro	3.5	23.9	23.5	1.0	2.7	30.3	7.8	1.9	0.0	5.3
	Ocp	1.1	1.5	1.9	2.8	8.8	1.7	1.6	9.8	0.0	30.7
1400-1500	Pro	2.9	25.6	21.3	1.4	3.0	30.9	7.8	2.1	0.0	5.0
	Ocp	1.0	1.6	2.2	2.3	9.1	2.1	1.5	12.8	0.0	31.3
1500-1600	Pro	4.5	25.2	21.3	1.1	2.3	30.2	7.6	2.2	0.0	5.6
	Ocp	1.1	1.6	2.0	2.4	9.8	1.6	1.5	11.2	0.0	27.9
1600-1700	Pro	3.6	29.0	23.8	0.9	2.4	26.6	6.0	1.6	0.1	6.1
	Ocp	1.1	1.6	1.9	2.0	10.1	1.6	1.5	10.1	1.0	31.5
1700-1800	Pro	5.3	27.9	24.8	0.7	3.3	24.3	4.8	1.7	0.0	7.1
	Ocp	1.1	1.6	2.0	1.6	12.2	1.7	1.2	8.3	0.0	43.3
1800-1900	Pro	6.1	35.9	23.5	1.0	5.2	17.6	2.7	1.8	0.1	6.3
	Ocp	1.1	1.6	2.2	1.6	15.1	1.6	1.4	7.1	1.0	55.6
1900-2000 Peak hour	Pro	5.5	40.0	28.0	0.6	5.2	12.0	2.3	1.1	0.0	5.3
	Ocp	1.2	1.6	2.1	2.2	15.2	1.6	1.5	7.2	0.0	47.5
2000-2100	Pro	2.6	40.6	32.5	0.4	4.8	9.2	2.9	1.3	0.0	5.7
	Ocp	1.1	1.7	2.0	1.9	12.6	1.6	1.3	4.1	0.0	38.3
2100-2200	Pro	5.0	30.7	39.4	0.8	4.4	9.4	2.0	2.2	0.0	6.1
	Ocp	1.2	1.7	2.0	5.9	10.8	1.8	1.4	2.9	0.0	34.3
2200-2300	Pro	3.8	34.4	41.3	0.5	5.4	6.4	1.7	1.2	0.0	5.3
	Ocp	1.2	1.8	2.0	1.1	10.3	1.8	1.7	1.6	0.0	37.0
16 hours	Pro	4.4	28.1	27.2	0.9	4.0	22.0	5.4	1.9	0.1	6.2
	Ocp	1.1	1.6	1.9	2.3	11.3	1.7	1.4	8.1	1.0	36.3

Legend

- Pro.** Proportion of vehicles in % (Sum may not add up to 100% due to figure rounding)
- Ocp.** Average occupancy of vehicles
- M&H** Medium and Heavy