

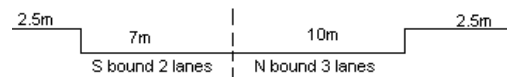
YEAR 2005

COVERAGE (B) STATION 4211

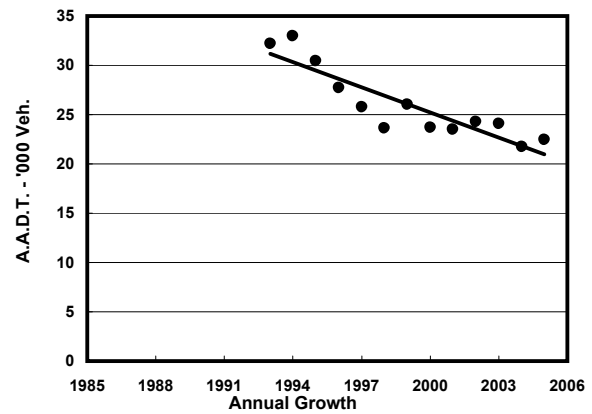
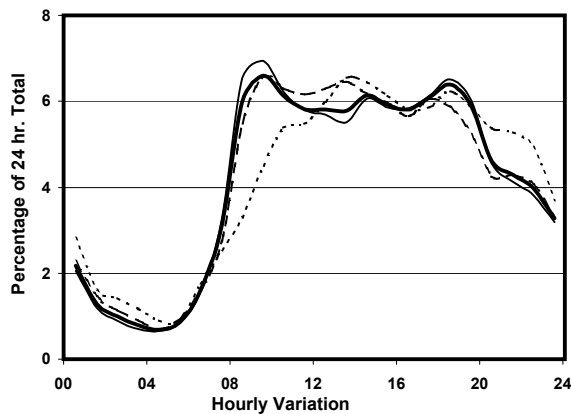
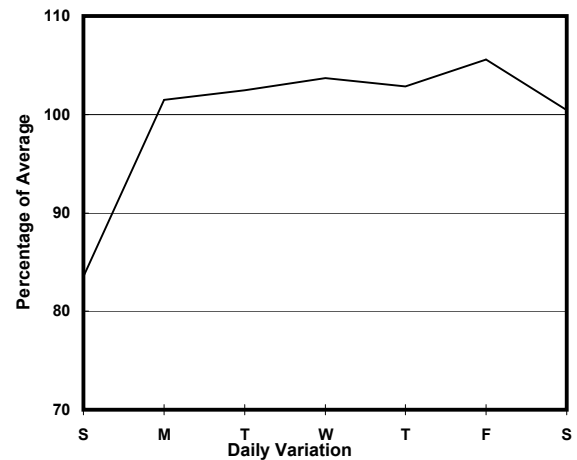
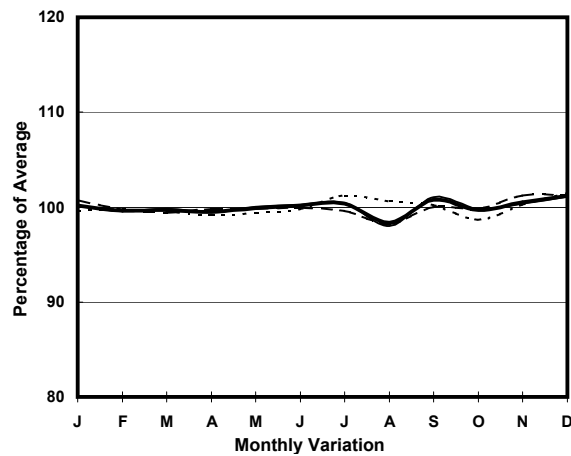
ROAD NETWORK MAJOR

ROAD TYPE DISTRICT DISTRIBUTOR

LINK FAT KWONG ST (from CHUNG HAU ST to YAN FUNG ST)



1. TRAFFIC FLOW VARIATION AND GROWTH



— All day — Mon.- Fri. - - - - Sat. - - - - - Sun.

2. TRAFFIC CHARACTERISTICS (BY DIRECTION)

Parameter	All - Day	Mon. - Fri.	Sat.	Sun.
SOUTH BOUND				
A.A.D.T.	11950	12460	12160	9870
R 12 / 24 - %	71.3	72.2	71.4	66.1
R 16 / 24 - %	89.6	90.1	89.3	86.9
AM Peak Hour	0900-1000	0900-1000	0900-1000	0900-1000
One-way flow at AM peak hour	860	950	840	450
T - % (AM)	-	4.8	-	-
PM Peak Hour	1800-1900	1800-1900	1800-1900	1800-1900
One-way flow at PM peak hour	770	810	740	620
T - % (PM)	-	8	-	-
Prop.of commercial vehicles - 16 hr.	-	7.2	-	-
NORTH BOUND				
A.A.D.T.	10530	10920	10600	9040
R 12 / 24 - %	67.5	68.3	68	62.2
R 16 / 24 - %	86.9	87.5	85.7	84.4
AM Peak Hour	0900-1000	0800-0900	0900-1000	0900-1000
One-way flow at AM peak hour	630	680	660	400
T - % (AM)	-	7.3	-	-
PM Peak Hour	1800-1900	1800-1900	1700-1800	1800-1900
One-way flow at PM peak hour	670	720	640	560
T - % (PM)	-	6.7	-	-
Prop.of commercial vehicles - 16 hr.	-	7	-	-

3. OTHER INFORMATION AND COMMENT

Coverage (B) Station 4211
Year 2005

4. Vehicle classification and occupancy - Monday to Friday

Time		Class of vehicle									
		Motor	Private	Taxi	Private	PLB	Goods veh.		Non	Fr. Bus	
		Cycle	Car		LB		Light	M & H	Fr. Bus	SD	DD
0700-0800	Pro	4.3	5.9	52.7	4.6	11.1	11.1	0.3	6.5	0.0	3.5
	Ocp	1.1	1.8	1.9	6.8	12.7	1.4	1.0	11.6	0.0	32.0
0800-0900	Pro	2.8	37.0	30.7	2.4	7.2	12.0	1.1	4.4	0.0	2.4
	Ocp	1.0	1.3	2.0	4.7	14.7	1.9	2.0	12.7	0.0	30.6
0900-1000 Peak hour	Pro	1.5	31.2	33.8	0.9	8.5	18.5	1.5	1.7	0.0	2.3
	Ocp	1.0	1.3	1.8	1.5	11.6	1.6	2.0	2.9	0.0	13.4
1000-1100	Pro	1.7	24.3	32.3	2.1	8.0	23.6	3.1	1.0	0.0	3.9
	Ocp	1.0	1.5	1.6	3.3	12.2	1.7	2.0	6.7	0.0	12.4
1100-1200	Pro	3.3	24.0	25.1	3.7	11.8	25.1	2.2	1.8	0.0	2.8
	Ocp	1.1	1.4	1.9	3.1	10.2	1.7	1.5	8.0	0.0	12.0
1200-1300	Pro	4.6	24.6	31.8	4.3	8.5	17.4	1.3	4.9	0.0	2.7
	Ocp	1.0	1.6	2.0	4.5	11.5	1.8	1.5	16.1	0.0	13.1
1300-1400	Pro	2.6	20.5	38.7	3.3	7.5	20.2	1.3	3.3	0.0	2.8
	Ocp	1.0	1.5	1.8	2.8	12.3	2.0	1.5	13.6	0.0	13.0
1400-1500	Pro	2.9	26.2	31.9	2.6	6.9	21.9	3.5	1.7	0.0	2.5
	Ocp	1.1	1.6	1.8	4.6	12.8	1.8	2.1	11.2	0.0	14.1
1500-1600	Pro	3.5	24.4	32.5	2.4	7.3	20.9	2.2	4.1	0.0	2.8
	Ocp	1.1	1.5	1.8	6.3	14.6	1.5	1.6	8.0	0.0	15.0
1600-1700	Pro	2.9	27.4	31.7	4.0	8.9	17.4	1.1	3.4	0.0	3.1
	Ocp	1.1	1.5	1.8	3.1	14.3	1.8	1.8	9.2	0.0	16.3
1700-1800	Pro	5.0	32.9	27.1	3.2	9.3	16.5	0.5	2.7	0.0	2.8
	Ocp	1.1	1.5	2.0	4.4	12.7	1.7	2.5	18.6	0.0	20.6
1800-1900	Pro	2.7	37.2	33.4	2.1	12.3	4.8	1.1	3.7	0.0	2.6
	Ocp	1.1	1.5	1.9	3.0	13.8	1.8	1.8	7.7	0.0	23.7
1900-2000	Pro	4.2	38.0	35.2	1.4	9.8	5.9	1.0	1.0	0.0	3.4
	Ocp	1.1	1.6	1.9	3.8	12.0	1.6	2.0	9.7	0.0	19.9
2000-2100	Pro	2.6	31.3	42.8	0.0	12.8	5.6	1.3	0.4	0.0	3.2
	Ocp	1.2	1.6	2.0	0.0	10.5	1.7	1.0	38.0	0.0	15.3
2100-2200	Pro	2.1	34.1	41.8	1.0	11.4	5.7	0.0	0.0	0.0	4.0
	Ocp	1.3	1.5	2.0	2.0	10.7	1.5	0.0	0.0	0.0	11.3
2200-2300	Pro	4.8	32.9	46.7	0.5	9.1	1.4	0.5	0.0	0.0	4.2
	Ocp	1.1	1.7	1.8	2.0	10.4	1.7	1.0	0.0	0.0	9.7
16 hours	Pro	3.2	28.4	34.7	2.5	9.2	14.9	1.4	2.8	0.0	3.0
	Ocp	1.1	1.5	1.9	4.2	12.4	1.7	1.8	11.3	0.0	17.5

Legend

Pro. Proportion of vehicles in % (Sum may not add up to 100% due to figure rounding)
Ocp. Average occupancy of vehicles
M&H Medium and Heavy