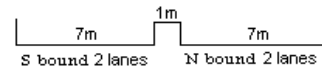
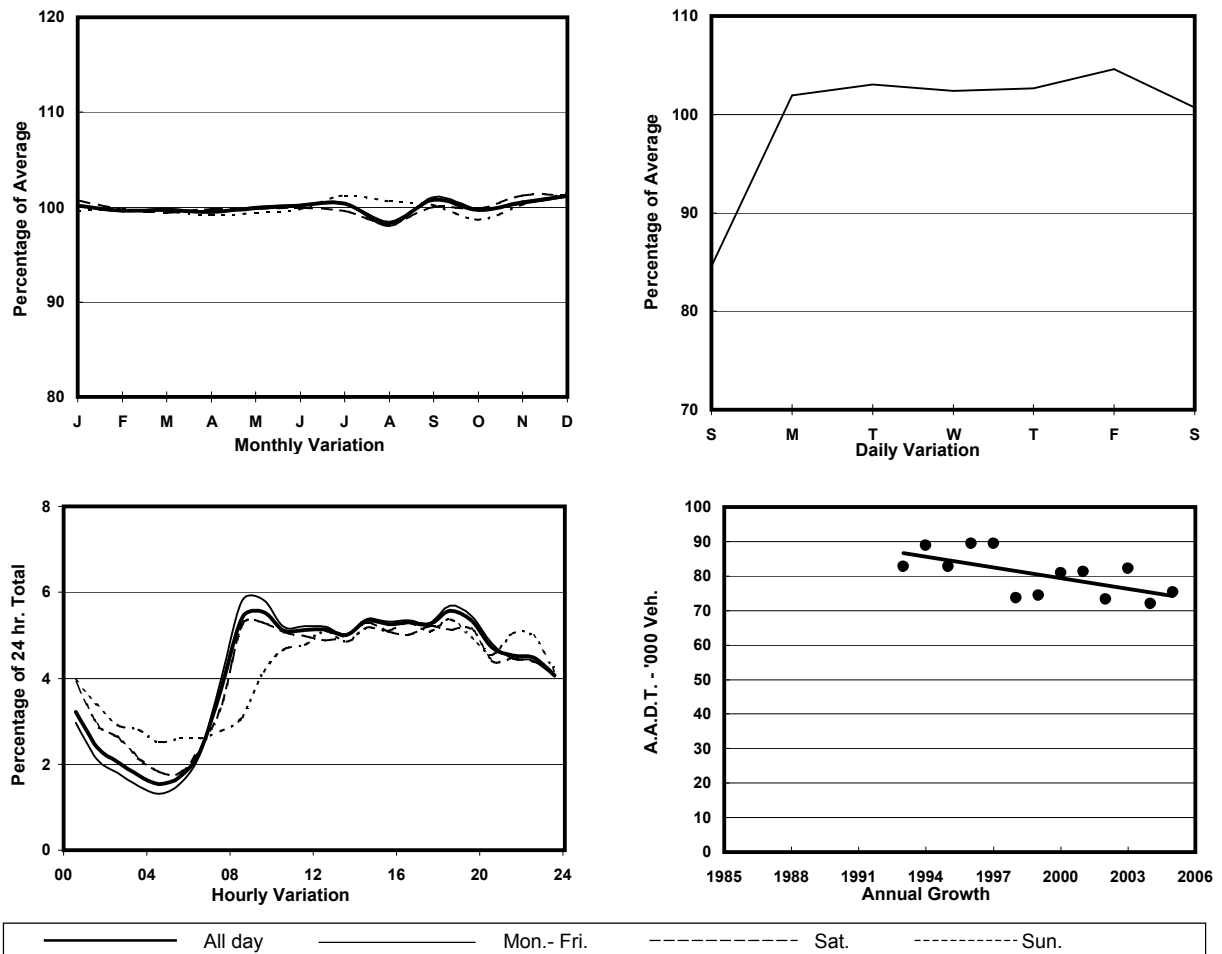


YEAR 2005
 COVERAGE (B) STATION 4213
 ROAD NETWORK MAJOR
 ROAD TYPE URBAN TRUNK ROAD

LINK EAST KOWLOON CORRIDOR <FO> (from MA TAU
 KOK RD to CHATHAM RD N)



1. TRAFFIC FLOW VARIATION AND GROWTH



2. TRAFFIC CHARACTERISTICS (BY DIRECTION)

Parameter	All - Day	Mon. - Fri.	Sat.	Sun.
SOUTH BOUND				
A.A.D.T.	30020	31220	30680	24860
R 12 / 24 - %	63	64.2	61.1	58
R 16 / 24 - %	81.3	82.6	78.7	76.2
AM Peak Hour	0800-0900	0800-0900	0800-0900	0900-1000
One-way flow at AM peak hour	1840	2060	1830	1140
T - % (AM)	-	12.6	-	-
PM Peak Hour	1800-1900	1800-1900	1800-1900	1800-1900
One-way flow at PM peak hour	1680	1770	1590	1380
T - % (PM)	-	8.5	-	-
Prop.of commercial vehicles - 16 hr.	-	13.4	-	-
NORTH BOUND				
A.A.D.T.	45260	46830	45720	39270
R 12 / 24 - %	61.1	62.8	58.8	54
R 16 / 24 - %	80.7	82.4	77.7	74.3
AM Peak Hour	0900-1000	0900-1000	0900-1000	0900-1000
One-way flow at AM peak hour	2430	2670	2250	1530
T - % (AM)	-	11.4	-	-
PM Peak Hour	1600-1700	1600-1700	1600-1700	1600-1700
One-way flow at PM peak hour	2580	2690	2590	2160
T - % (PM)	-	10.2	-	-
Prop.of commercial vehicles - 16 hr.	-	11.2	-	-

3. OTHER INFORMATION AND COMMENT

Coverage (B) Station 4213
Year 2005

4. Vehicle classification and occupancy - Monday to Friday

Time		Class of vehicle									
		Motor	Private	Taxi	Private	PLB	Goods veh.		Non	Fr. Bus	
		Cycle	Car		LB		Light	M & H	Fr. Bus	SD	DD
0700-0800	Pro	5.3	18.4	25.9	0.9	0.0	26.5	12.0	5.3	0.0	5.7
	Ocp	1.1	1.3	1.8	1.8	0.0	1.5	1.2	1.7	0.0	23.7
0800-0900	Pro	7.3	35.6	24.2	0.7	0.0	18.8	7.9	3.3	0.0	2.2
	Ocp	1.0	1.4	1.9	3.9	0.0	1.7	1.3	13.7	0.0	54.5
0900-1000 Peak hour	Pro	3.7	35.7	25.8	0.8	0.0	21.8	6.1	3.6	0.1	2.5
	Ocp	1.1	1.3	1.9	1.8	0.0	1.7	1.3	11.4	1.0	35.9
1000-1100	Pro	3.4	28.1	19.1	1.8	0.0	32.2	10.8	2.0	0.0	2.6
	Ocp	1.1	1.5	1.9	2.6	0.0	1.6	1.3	16.7	0.0	22.6
1100-1200	Pro	2.9	27.1	23.1	0.6	0.0	32.6	9.4	2.2	0.0	2.1
	Ocp	1.0	1.4	1.9	1.0	0.0	1.6	1.3	5.8	0.0	31.3
1200-1300	Pro	3.5	24.8	22.0	0.6	0.0	36.9	9.2	1.4	0.0	1.5
	Ocp	1.1	1.5	2.1	1.5	0.0	1.5	1.3	10.0	0.0	34.8
1300-1400	Pro	2.8	28.0	18.1	1.3	0.0	35.3	10.6	2.1	0.0	1.8
	Ocp	1.0	1.4	2.2	4.7	0.0	1.6	1.3	12.9	0.0	28.4
1400-1500	Pro	3.0	30.7	14.9	1.9	0.0	35.2	10.8	2.0	0.0	1.5
	Ocp	1.0	1.5	2.1	2.4	0.0	1.5	1.2	9.9	0.0	35.8
1500-1600	Pro	3.6	30.2	19.1	1.3	0.0	32.9	9.6	1.8	0.0	1.6
	Ocp	1.0	1.5	2.0	2.5	0.0	1.7	1.2	16.8	0.0	29.6
1600-1700	Pro	4.0	31.7	21.0	1.2	0.0	29.5	8.1	2.0	0.0	2.5
	Ocp	1.1	1.4	1.8	3.3	0.0	1.6	1.2	11.3	0.0	27.1
1700-1800	Pro	6.4	31.0	22.6	1.1	0.0	28.2	6.1	2.1	0.0	2.6
	Ocp	1.1	1.4	1.9	2.4	0.0	1.7	1.2	12.2	0.0	32.3
1800-1900	Pro	9.0	35.6	24.0	1.0	0.0	20.7	4.6	2.5	0.0	2.6
	Ocp	1.1	1.6	2.3	1.9	0.0	1.7	1.2	11.1	0.0	53.7
1900-2000	Pro	6.2	47.6	26.7	0.4	0.0	11.7	3.8	1.5	0.0	2.1
	Ocp	1.1	1.5	2.3	1.8	0.0	1.6	1.1	3.6	0.0	35.3
2000-2100	Pro	4.8	43.8	33.1	0.4	0.0	10.2	3.8	1.8	0.1	2.1
	Ocp	1.1	1.4	1.9	3.3	0.0	1.5	1.1	7.8	1.0	30.7
2100-2200	Pro	3.6	39.2	34.7	1.1	0.0	11.4	3.4	3.9	0.0	2.7
	Ocp	1.1	1.5	2.1	2.8	0.0	1.5	1.3	13.3	0.0	28.1
2200-2300	Pro	3.8	35.3	46.6	0.8	0.0	6.7	2.6	2.0	0.0	2.1
	Ocp	1.1	1.9	2.0	1.5	0.0	1.8	1.1	1.2	0.0	26.5
16 hours	Pro	4.6	33.2	24.7	1.0	0.0	24.4	7.3	2.4	0.1	2.3
	Ocp	1.1	1.5	2.0	2.6	0.0	1.6	1.2	10.1	1.0	33.1

Legend

Pro. Proportion of vehicles in % (Sum may not add up to 100% due to figure rounding)
Ocp. Average occupancy of vehicles
M&H Medium and Heavy