

YEAR

2005

LINK YIM PO FONG ST (from SHANTUNG ST to WATERLOO RD)

COVERAGE (B) STATION

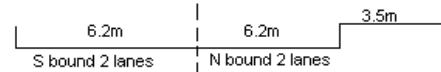
4215

ROAD NETWORK

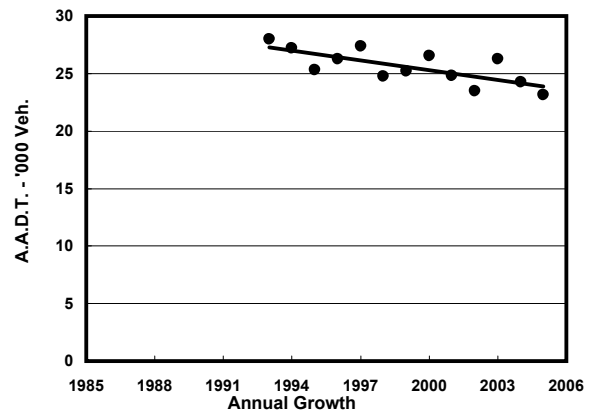
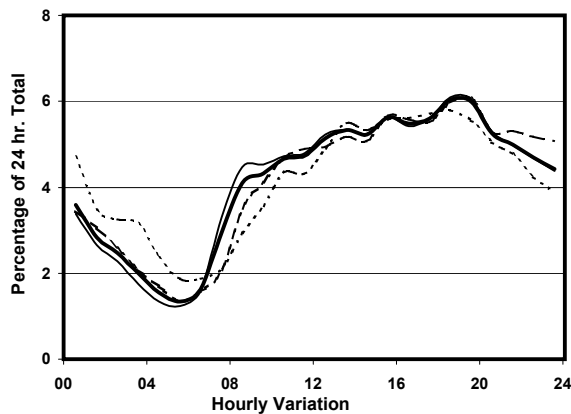
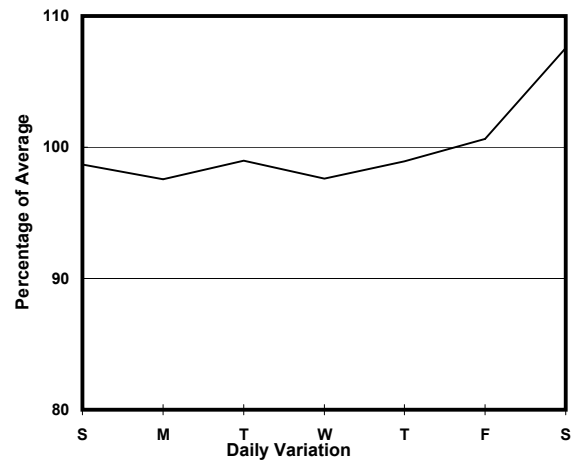
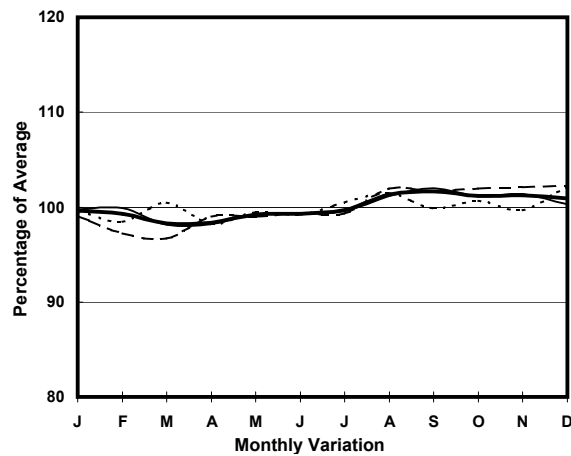
MAJOR

ROAD TYPE

DISTRICT DISTRIBUTOR



## 1. TRAFFIC FLOW VARIATION AND GROWTH



— All day      - - - - - Mon.- Fri.      - - - - - Sat.      . . . . . Sun.

## 2. TRAFFIC CHARACTERISTICS (BY DIRECTION)

| Parameter                            | All - Day | Mon. - Fri. | Sat.      | Sun.      |
|--------------------------------------|-----------|-------------|-----------|-----------|
| <b>SOUTH BOUND</b>                   |           |             |           |           |
| A.A.D.T.                             | 11960     | 11820       | 12950     | 11770     |
| R 12 / 24 - %                        | 59.5      | 60.3        | 57.9      | 57.4      |
| R 16 / 24 - %                        | 80.8      | 81.7        | 80.3      | 76.9      |
| AM Peak Hour                         | 0900-1000 | 0800-0900   | 0900-1000 | 0900-1000 |
| One-way flow at AM peak hour         | 500       | 520         | 500       | 400       |
| T - % (AM)                           | -         | 3.5         | -         | -         |
| PM Peak Hour                         | 1800-1900 | 1800-1900   | 1800-1900 | 1800-1900 |
| One-way flow at PM peak hour         | 760       | 760         | 800       | 720       |
| T - % (PM)                           | -         | 1.9         | -         | -         |
| Prop.of commercial vehicles - 16 hr. | -         | 3.1         | -         | -         |

|                                      |           |           |           |           |
|--------------------------------------|-----------|-----------|-----------|-----------|
| <b>NORTH BOUND</b>                   |           |           |           |           |
| A.A.D.T.                             | 11220     | 11090     | 12030     | 11110     |
| R 12 / 24 - %                        | 58.9      | 60.5      | 56.6      | 54        |
| R 16 / 24 - %                        | 79.5      | 81.1      | 77.9      | 73.8      |
| AM Peak Hour                         | 0900-1000 | 0900-1000 | 0900-1000 | 0900-1000 |
| One-way flow at AM peak hour         | 510       | 520       | 530       | 420       |
| T - % (AM)                           | -         | 3.3       | -         | -         |
| PM Peak Hour                         | 1800-1900 | 1800-1900 | 1800-1900 | 1600-1700 |
| One-way flow at PM peak hour         | 640       | 640       | 700       | 620       |
| T - % (PM)                           | -         | 1.2       | -         | -         |
| Prop.of commercial vehicles - 16 hr. | -         | 2.9       | -         | -         |

## 3. OTHER INFORMATION AND COMMENT

**Coverage (B) Station 4215**  
**Year 2005**

**4. Vehicle classification and occupancy - Monday to Friday**

| Time                   |     | Class of vehicle |         |      |         |      |            |       |         |         |      |
|------------------------|-----|------------------|---------|------|---------|------|------------|-------|---------|---------|------|
|                        |     | Motor            | Private | Taxi | Private | PLB  | Goods veh. |       | Non     | Fr. Bus |      |
|                        |     | Cycle            | Car     |      | LB      |      | Light      | M & H | Fr. Bus | SD      | DD   |
| 0700-0800              | Pro | 0.6              | 11.1    | 55.7 | 2.5     | 12.4 | 11.8       | 0.0   | 5.0     | 0.2     | 0.8  |
|                        | Ocp | 1.0              | 1.5     | 1.9  | 8.8     | 9.3  | 1.8        | 0.0   | 7.9     | 6.0     | 10.8 |
| 0800-0900              | Pro | 4.0              | 26.3    | 41.8 | 0.7     | 11.2 | 9.4        | 1.1   | 4.7     | 0.3     | 0.5  |
|                        | Ocp | 1.1              | 1.6     | 1.9  | 7.5     | 12.3 | 1.4        | 2.7   | 10.5    | 10.3    | 8.2  |
| 0900-1000              | Pro | 2.4              | 18.7    | 44.5 | 2.0     | 10.9 | 18.4       | 2.0   | 0.3     | 0.3     | 0.5  |
|                        | Ocp | 1.1              | 1.3     | 1.9  | 2.0     | 7.7  | 1.8        | 1.3   | 1.0     | 8.0     | 6.3  |
| 1000-1100              | Pro | 4.3              | 16.4    | 43.7 | 2.3     | 5.8  | 24.6       | 2.0   | 0.4     | 0.1     | 0.5  |
|                        | Ocp | 1.0              | 1.3     | 1.7  | 2.5     | 7.1  | 1.7        | 2.0   | 3.0     | 2.0     | 8.8  |
| 1100-1200              | Pro | 4.3              | 19.2    | 45.6 | 2.3     | 6.3  | 19.5       | 1.3   | 1.0     | 0.2     | 0.2  |
|                        | Ocp | 1.1              | 1.5     | 1.8  | 1.9     | 6.7  | 1.7        | 1.5   | 10.7    | 9.3     | 7.3  |
| 1200-1300              | Pro | 1.4              | 22.0    | 46.1 | 3.6     | 8.5  | 16.0       | 0.7   | 1.1     | 0.2     | 0.4  |
|                        | Ocp | 1.3              | 1.7     | 2.1  | 4.1     | 5.3  | 1.6        | 2.0   | 9.3     | 8.5     | 7.2  |
| 1300-1400              | Pro | 4.0              | 27.9    | 39.7 | 0.3     | 6.7  | 18.2       | 1.3   | 1.0     | 0.3     | 0.6  |
|                        | Ocp | 1.2              | 1.4     | 1.9  | 2.0     | 11.0 | 1.6        | 1.0   | 1.0     | 7.7     | 8.9  |
| 1400-1500              | Pro | 2.5              | 24.6    | 38.6 | 1.4     | 6.8  | 22.9       | 0.7   | 1.8     | 0.3     | 0.4  |
|                        | Ocp | 1.0              | 1.5     | 2.1  | 3.0     | 8.4  | 1.6        | 2.5   | 11.4    | 10.3    | 8.8  |
| 1500-1600              | Pro | 4.3              | 29.7    | 37.7 | 0.0     | 6.0  | 20.0       | 0.7   | 1.0     | 0.2     | 0.5  |
|                        | Ocp | 1.1              | 1.6     | 2.0  | 0.0     | 8.8  | 1.7        | 2.0   | 12.3    | 17.5    | 10.2 |
| 1600-1700              | Pro | 4.1              | 29.0    | 35.6 | 2.1     | 9.0  | 16.2       | 1.4   | 1.7     | 0.3     | 0.5  |
|                        | Ocp | 1.0              | 1.7     | 2.0  | 2.3     | 8.4  | 1.7        | 1.5   | 6.6     | 14.0    | 12.2 |
| 1700-1800              | Pro | 4.9              | 26.9    | 33.1 | 1.3     | 9.7  | 18.5       | 1.0   | 3.9     | 0.2     | 0.4  |
|                        | Ocp | 1.1              | 1.5     | 1.8  | 3.0     | 8.3  | 1.7        | 1.7   | 3.8     | 8.0     | 12.2 |
| 1800-1900<br>Peak hour | Pro | 9.1              | 27.8    | 39.4 | 0.3     | 9.4  | 12.5       | 0.3   | 0.6     | 0.2     | 0.4  |
|                        | Ocp | 1.1              | 1.5     | 2.2  | 2.0     | 13.2 | 1.8        | 2.0   | 9.5     | 5.7     | 10.2 |
| 1900-2000              | Pro | 5.7              | 29.5    | 48.1 | 0.0     | 10.2 | 4.8        | 0.9   | 0.3     | 0.2     | 0.4  |
|                        | Ocp | 1.2              | 1.8     | 1.9  | 0.0     | 12.9 | 1.6        | 1.0   | 1.0     | 5.0     | 7.6  |
| 2000-2100              | Pro | 4.6              | 32.9    | 43.3 | 0.4     | 10.7 | 6.4        | 0.0   | 1.1     | 0.3     | 0.4  |
|                        | Ocp | 1.2              | 1.7     | 1.9  | 2.0     | 7.0  | 1.7        | 0.0   | 6.7     | 4.3     | 6.0  |
| 2100-2200              | Pro | 3.5              | 24.4    | 51.9 | 0.9     | 10.5 | 6.5        | 0.0   | 1.3     | 0.2     | 0.8  |
|                        | Ocp | 1.0              | 1.6     | 2.1  | 1.5     | 7.8  | 1.7        | 0.0   | 10.7    | 6.0     | 8.1  |
| 2200-2300              | Pro | 5.8              | 34.4    | 46.4 | 0.4     | 9.1  | 2.5        | 0.4   | 0.4     | 0.2     | 0.5  |
|                        | Ocp | 1.1              | 1.8     | 1.9  | 1.0     | 9.6  | 1.3        | 2.0   | 8.0     | 3.5     | 4.5  |
| 16 hours               | Pro | 4.3              | 25.5    | 42.7 | 1.2     | 8.9  | 14.4       | 0.9   | 1.5     | 0.2     | 0.5  |
|                        | Ocp | 1.1              | 1.6     | 1.9  | 3.3     | 9.2  | 1.7        | 1.7   | 7.7     | 8.3     | 8.6  |

**Legend**

**Pro.** Proportion of vehicles in % (Sum may not add up to 100% due to figure rounding)  
**Ocp.** Average occupancy of vehicles  
**M&H** Medium and Heavy