

YEAR

2005

LINK HOI WANG RD (from HOI TING RD to CHERRY ST RA)

COVERAGE (B) STATION

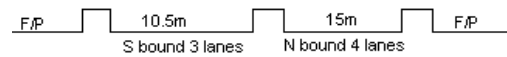
4220

ROAD NETWORK

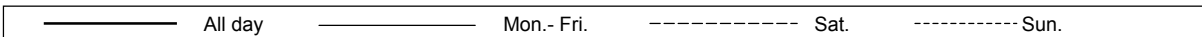
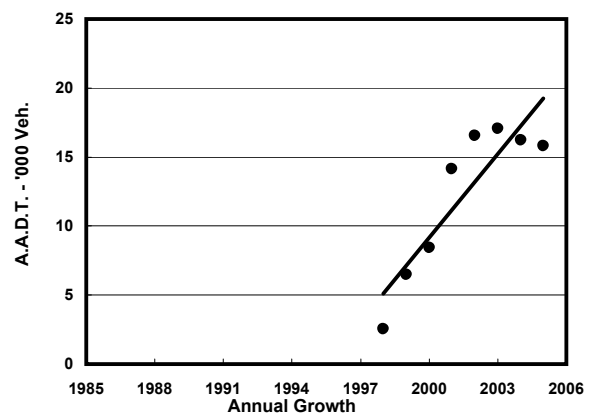
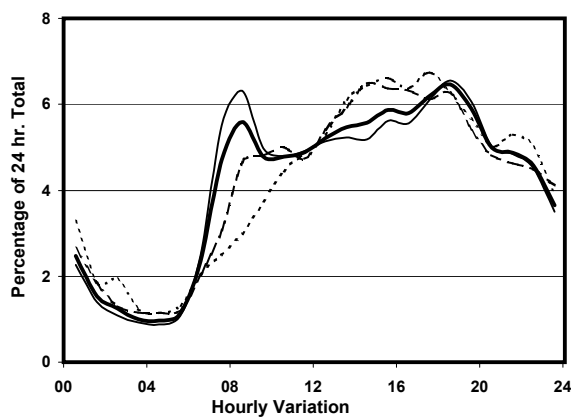
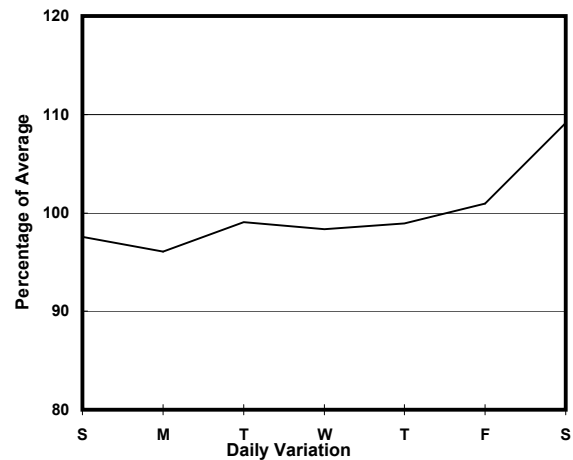
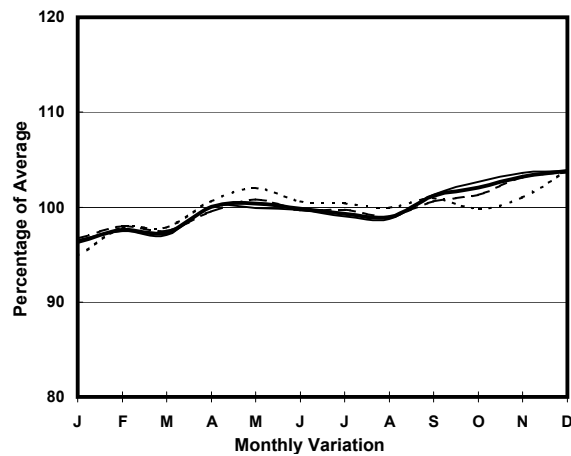
MAJOR

ROAD TYPE

PRIMARY DISTRIBUTOR



1. TRAFFIC FLOW VARIATION AND GROWTH



2. TRAFFIC CHARACTERISTICS (BY DIRECTION)

Parameter	All - Day	Mon. - Fri.	Sat.	Sun.
SOUTH BOUND				
A.A.D.T.	8170	8150	8920	7610
R 12 / 24 - %	64.7	65.6	63.9	60.9
R 16 / 24 - %	85.7	86.6	84.4	82.5
AM Peak Hour	0800-0900	0800-0900	0900-1000	0900-1000
One-way flow at AM peak hour	440	480	410	350
T - % (AM)	-	14.1	-	-
PM Peak Hour	1800-1900	1800-1900	1800-1900	1700-1800
One-way flow at PM peak hour	560	580	590	450
T - % (PM)	-	14.5	-	-
Prop.of commercial vehicles - 16 hr.	-	16.1	-	-
NORTH BOUND				
A.A.D.T.	7640	7470	8390	7840
R 12 / 24 - %	66	66.3	66.6	63.7
R 16 / 24 - %	85.6	86.1	84.7	84.2
AM Peak Hour	0800-0900	0800-0900	0900-1000	0900-1000
One-way flow at AM peak hour	450	510	430	230
T - % (AM)	-	17.2	-	-
PM Peak Hour	1700-1800	1700-1800	1600-1700	1700-1800
One-way flow at PM peak hour	480	450	570	600
T - % (PM)	-	22.6	-	-
Prop.of commercial vehicles - 16 hr.	-	19.2	-	-

3. OTHER INFORMATION AND COMMENT

Coverage (B) Station 4220
Year 2005

4. Vehicle classification and occupancy - Monday to Friday

Time		Class of vehicle									
		Motor	Private	Taxi	Private	PLB	Goods veh.		Non	Fr. Bus	
		Cycle	Car		LB		Light	M & H	Fr. Bus	SD	DD
0700-0800	Pro	2.4	13.3	26.5	7.2	8.4	12.7	1.8	13.3	0.0	14.3
	Ocp	1.3	1.4	1.5	5.0	9.8	1.7	1.7	16.0	0.0	17.5
0800-0900	Pro	1.1	41.0	24.6	1.5	7.1	8.9	1.9	4.5	0.0	9.4
	Ocp	1.0	1.6	1.5	3.8	11.2	1.4	2.2	20.3	0.0	13.8
0900-1000	Pro	1.8	30.0	22.1	2.2	7.1	18.1	5.3	2.2	0.0	11.3
	Ocp	1.0	1.4	1.4	4.8	6.4	1.5	1.7	22.0	0.0	7.4
1000-1100	Pro	1.5	23.8	23.3	0.5	8.4	26.8	3.5	2.0	0.0	10.3
	Ocp	1.0	1.5	1.4	5.0	4.5	1.7	1.7	19.5	0.0	7.1
1100-1200	Pro	0.5	22.6	17.9	1.6	8.9	28.9	5.3	3.7	0.0	10.5
	Ocp	1.0	1.4	1.6	3.7	6.1	1.7	1.3	8.4	0.0	8.3
1200-1300	Pro	1.6	16.6	21.7	4.7	9.3	23.3	4.7	7.8	0.0	10.5
	Ocp	1.3	1.7	1.6	6.0	5.1	1.5	1.7	8.5	0.0	7.5
1300-1400	Pro	1.0	21.6	17.7	3.4	7.9	27.5	5.9	4.4	0.0	10.6
	Ocp	1.0	1.5	1.3	5.3	5.1	1.7	1.7	8.9	0.0	8.5
1400-1500	Pro	5.1	27.0	22.8	1.3	5.9	23.6	3.0	2.5	0.0	8.9
	Ocp	1.1	1.6	1.4	1.0	5.9	1.7	2.3	11.7	0.0	8.6
1500-1600	Pro	2.2	27.8	25.6	2.2	6.6	18.1	3.5	4.0	0.0	10.0
	Ocp	1.0	1.5	1.4	5.0	7.6	1.8	2.1	17.7	0.0	9.4
1600-1700	Pro	5.0	25.2	25.2	1.4	8.2	15.6	1.8	7.3	0.0	10.2
	Ocp	1.3	1.6	1.5	2.3	9.3	1.6	1.5	10.4	0.0	8.9
1700-1800	Pro	3.4	31.3	21.5	1.7	6.4	14.6	3.0	6.9	0.0	11.2
	Ocp	1.0	1.5	1.4	3.3	7.6	1.7	1.7	13.9	0.0	9.9
1800-1900 Peak hour	Pro	7.3	34.6	20.1	1.7	8.1	12.8	1.3	3.4	0.0	10.7
	Ocp	1.0	1.5	2.0	2.5	10.9	1.6	1.0	9.9	0.0	10.7
1900-2000	Pro	2.9	47.2	21.2	0.5	6.3	10.1	0.5	1.4	0.0	10.0
	Ocp	1.0	1.6	1.6	6.0	10.8	1.5	2.0	37.0	0.0	10.7
2000-2100	Pro	7.7	26.6	30.7	0.0	13.6	8.9	0.6	1.8	0.0	10.2
	Ocp	1.1	1.5	1.9	0.0	7.0	1.5	3.0	13.3	0.0	7.6
2100-2200	Pro	5.0	34.4	29.4	0.0	12.2	4.4	1.7	1.7	0.0	11.1
	Ocp	1.2	1.5	1.5	0.0	5.5	1.5	1.7	22.0	0.0	8.0
2200-2300	Pro	1.7	41.8	30.9	0.0	9.7	1.1	0.6	1.7	0.0	12.4
	Ocp	1.3	1.9	1.5	0.0	4.2	2.5	1.0	29.7	0.0	6.2
16 hours	Pro	3.1	29.5	23.6	1.8	8.2	16.1	2.8	4.2	0.0	10.6
	Ocp	1.1	1.6	1.5	4.4	7.3	1.6	1.7	14.6	0.0	9.5

Legend

- Pro.** Proportion of vehicles in % (Sum may not add up to 100% due to figure rounding)
- Ocp.** Average occupancy of vehicles
- M&H** Medium and Heavy