

YEAR

2005

LINK JOCKEY CLUB RD (from LOK YIP RD to WO HOP SHEK INT)

COVERAGE (B) STATION

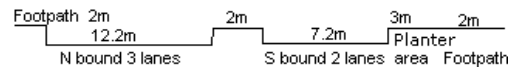
6206

ROAD NETWORK

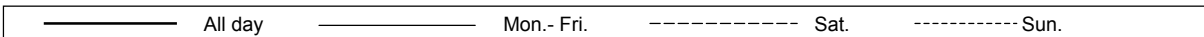
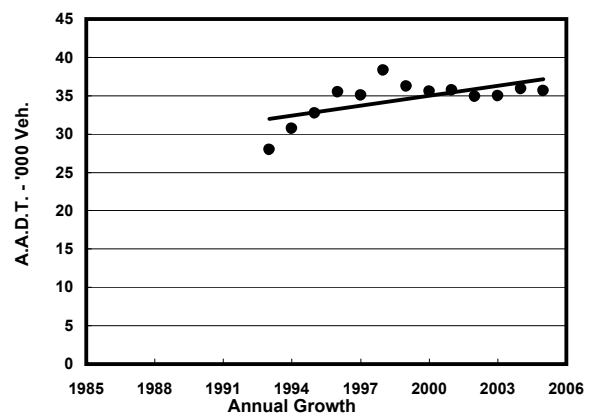
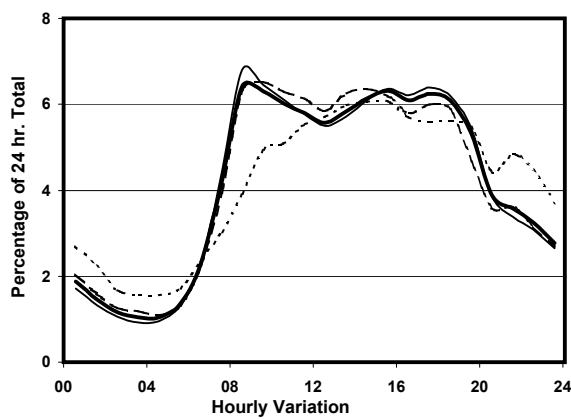
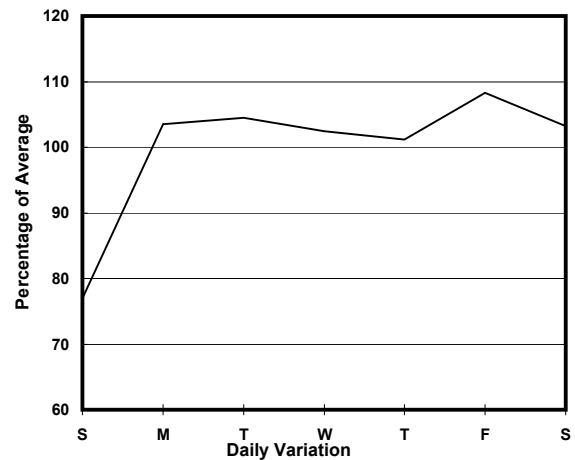
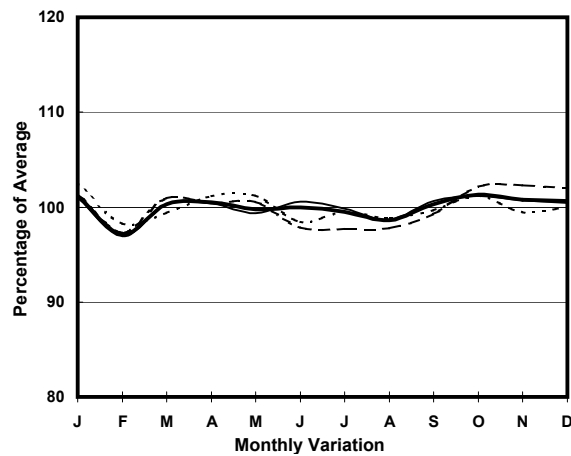
MAJOR

ROAD TYPE

PRIMARY DISTRIBUTOR



1. TRAFFIC FLOW VARIATION AND GROWTH



2. TRAFFIC CHARACTERISTICS (BY DIRECTION)

Parameter	All - Day	Mon. - Fri.	Sat.	Sun.
SOUTH BOUND				
A.A.D.T.	16630	17470	17200	13170
R 12 / 24 - %	71.5	72.5	71.8	64.3
R 16 / 24 - %	86.8	87.3	86.6	83.1
AM Peak Hour	0900-1000	0800-0900	0900-1000	0900-1000
One-way flow at AM peak hour	1070	1170	1160	650
T - % (AM)	-	19.7	-	-
PM Peak Hour	1700-1800	1700-1800	1600-1700	1600-1700
One-way flow at PM peak hour	1040	1130	1000	790
T - % (PM)	-	15.7	-	-
Prop.of commercial vehicles - 16 hr.	-	20.1	-	-
NORTH BOUND				
A.A.D.T.	19040	20020	20030	14590
R 12 / 24 - %	70.5	71.6	71.3	62.4
R 16 / 24 - %	87.3	88.1	86.6	82
AM Peak Hour	0800-0900	0800-0900	0800-0900	0900-1000
One-way flow at AM peak hour	1250	1390	1280	720
T - % (AM)	-	23	-	-
PM Peak Hour	1700-1800	1600-1700	1700-1800	1800-1900
One-way flow at PM peak hour	1190	1290	1260	810
T - % (PM)	-	25.2	-	-
Prop.of commercial vehicles - 16 hr.	-	19.9	-	-

3. OTHER INFORMATION AND COMMENT

4. Vehicle classification and occupancy - Monday to Friday

Time		Class of vehicle									
		Motor	Private	Taxi	Private	PLB	Goods veh.		Non	Fr. Bus	
		Cycle	Car		LB		Light	M & H	Fr. Bus	SD	DD
0700-0800	Pro	2.6	25.5	17.6	3.3	3.0	28.8	8.4	7.7	0.1	2.9
	Ocp	1.3	1.4	2.0	5.8	11.5	1.8	1.2	13.5	1.0	27.2
0800-0900 Peak hour	Pro	1.3	36.5	16.3	1.3	1.6	21.7	14.1	5.0	0.0	2.3
	Ocp	1.0	1.5	1.9	5.4	10.6	1.6	1.2	12.2	0.0	18.5
0900-1000	Pro	2.9	36.2	10.5	1.6	1.6	28.1	14.6	2.2	0.0	2.3
	Ocp	1.0	1.3	1.9	2.6	11.4	1.5	1.1	5.3	0.0	8.6
1000-1100	Pro	0.8	28.6	11.2	1.9	2.3	33.5	16.7	2.3	0.1	2.5
	Ocp	1.0	1.4	1.8	3.4	8.6	1.5	1.2	6.4	1.0	6.9
1100-1200	Pro	1.1	33.9	9.7	0.9	3.5	34.1	11.9	2.6	0.0	2.5
	Ocp	1.0	1.5	1.8	1.8	7.2	1.4	1.3	3.7	0.0	8.3
1200-1300	Pro	0.9	25.5	9.9	2.8	1.2	33.1	20.2	3.9	0.0	2.5
	Ocp	1.0	1.6	1.7	6.7	10.4	1.5	1.3	10.9	0.0	8.0
1300-1400	Pro	1.3	31.5	9.2	1.5	2.4	30.0	18.6	2.8	0.0	2.8
	Ocp	1.0	1.4	1.8	2.4	8.7	1.5	1.2	2.7	0.0	7.5
1400-1500	Pro	1.6	29.7	9.1	1.7	2.5	29.9	20.6	2.5	0.0	2.3
	Ocp	1.3	1.6	1.7	2.6	7.0	1.5	1.3	7.5	0.0	7.0
1500-1600	Pro	1.3	28.5	8.2	3.6	2.4	31.4	17.6	4.5	0.2	2.2
	Ocp	1.0	1.5	2.0	4.5	9.9	1.6	1.4	16.8	1.0	8.0
1600-1700	Pro	1.2	25.5	11.6	3.7	2.0	31.2	18.0	3.9	0.0	2.8
	Ocp	1.2	1.5	1.8	3.0	10.1	1.6	1.1	11.9	0.0	9.5
1700-1800	Pro	3.4	35.7	10.1	2.8	2.2	27.4	12.0	3.9	0.0	2.6
	Ocp	1.2	1.5	1.7	3.6	11.6	1.6	1.3	5.4	0.0	13.4
1800-1900	Pro	1.9	46.0	10.0	1.9	3.0	21.3	9.1	4.0	0.0	2.8
	Ocp	1.0	1.4	1.9	4.2	11.9	1.5	1.5	9.1	0.0	17.3
1900-2000	Pro	1.8	52.3	10.3	0.8	2.5	18.3	6.8	4.3	0.0	3.3
	Ocp	1.0	1.6	1.6	5.7	10.1	1.5	1.2	5.5	0.0	14.0
2000-2100	Pro	2.5	46.3	22.4	1.1	5.8	10.1	5.8	1.4	0.0	4.5
	Ocp	1.1	1.4	1.6	1.3	7.1	1.6	1.1	2.3	0.0	7.2
2100-2200	Pro	1.9	46.5	21.2	0.8	4.9	12.1	6.1	1.9	0.0	4.6
	Ocp	1.0	1.5	1.6	2.5	6.8	1.7	1.3	2.4	0.0	6.9
2200-2300	Pro	0.4	53.8	18.7	0.9	8.0	8.5	3.6	0.9	0.0	5.2
	Ocp	1.0	1.4	1.7	1.5	5.2	1.3	1.3	4.5	0.0	5.7
16 hours	Pro	1.7	35.0	12.1	2.0	2.7	26.4	13.7	3.5	0.1	2.8
	Ocp	1.1	1.5	1.8	4.0	8.9	1.5	1.3	9.3	1.0	11.0

Legend

Pro. Proportion of vehicles in % (Sum may not add up to 100% due to figure rounding)
Ocp. Average occupancy of vehicles
M&H Medium and Heavy