

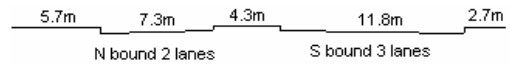
YEAR 2006

CORE STATION 1009

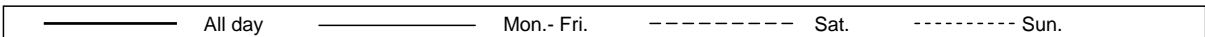
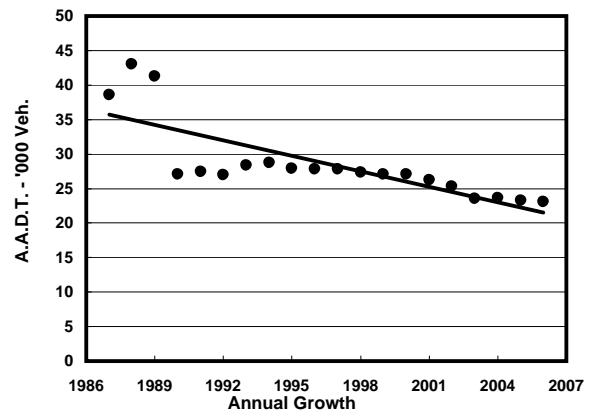
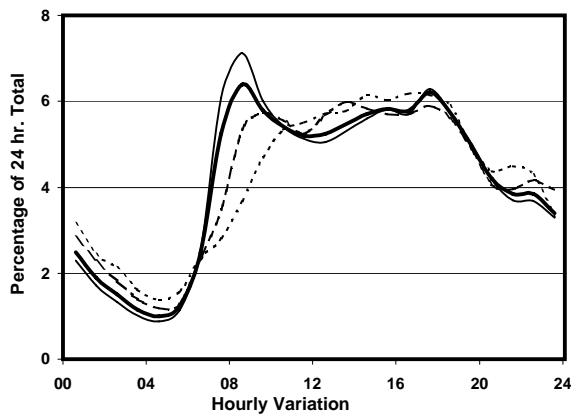
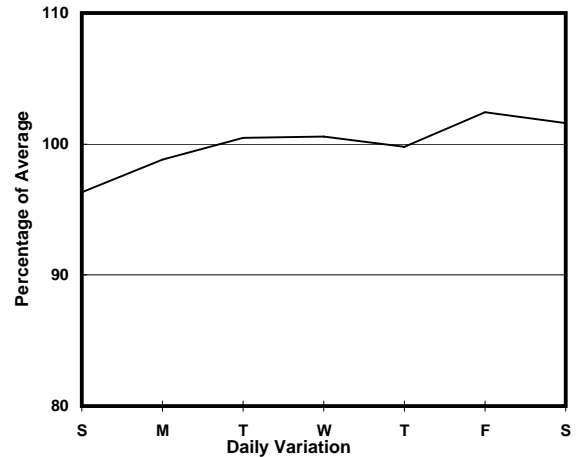
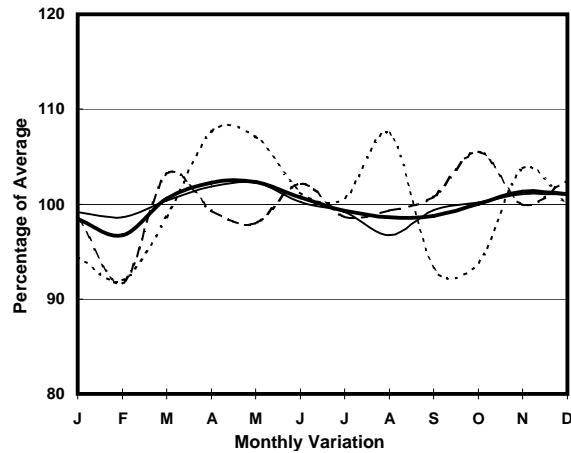
ROAD NETWORK MAJOR

ROAD TYPE PRIMARY DISTRIBUTOR

LINK CHAI WAN RD (from ISLAND EASTERN CORRIDOR  
APPROACH to TAI TAM RD)



## 1. TRAFFIC FLOW VARIATION AND GROWTH



## 2. TRAFFIC CHARACTERISTICS (BY DIRECTION)

Parameter	All - Day	Mon. - Fri.	Sat.	Sun.
<b>SOUTH BOUND</b>				
A.A.D.T.	11710	11770	11970	11320
R 12 / 24 - %	65.7	66.7	63.7	62.1
R 16 / 24 - %	83.6	84.6	81.4	80.5
AM Peak Hour	0800-0900	0800-0900	0900-1000	0900-1000
One-way flow at AM peak hour	730	810	690	530
T - % (AM)	-	11.2	-	-
PM Peak Hour	1600-1700	1800-1900	1600-1700	1600-1700
One-way flow at PM peak hour	640	630	670	690
T - % (PM)	-	13.6	-	-
Prop.of commercial vehicles - 16 hr.	-	15.3	-	-
<b>NORTH BOUND</b>				
A.A.D.T.	11370	11450	11520	10980
R 12 / 24 - %	70.4	71.8	67.9	65.8
R 16 / 24 - %	86.2	87.1	84.4	83.6
AM Peak Hour	0800-0900	0800-0900	0900-1000	0900-1000
One-way flow at AM peak hour	750	850	660	520
T - % (AM)	-	13.2	-	-
PM Peak Hour	1700-1800	1700-1800	1700-1800	1800-1900
One-way flow at PM peak hour	820	850	730	750
T - % (PM)	-	12.2	-	-
Prop.of commercial vehicles - 16 hr.	-	15.1	-	-

## 3. OTHER INFORMATION AND COMMENT

**4. Vehicle classification and occupancy - Monday to Friday**

Time		Class of vehicle									
		Motor	Private	Taxi	Private	PLB	Goods veh.		Non	Fr. Bus	
		Cycle	Car		LB		Light	M & H	Fr. Bus	SD	DD
0700-0800	Pro	3.2	24.2	29.6	2.2	13.7	8.9	1.0	5.1	0.1	12.1
	Ocp	1.1	1.5	1.9	5.4	11.3	1.8	1.0	16.8	25.0	50.2
0800-0900 Peak hour	Pro	2.7	47.9	20.6	1.7	8.1	6.7	0.6	2.5	0.2	9.0
	Ocp	1.1	1.3	2.1	3.1	13.1	1.8	1.7	5.2	41.3	49.4
0900-1000	Pro	3.4	34.6	27.8	4.3	6.5	12.5	1.2	0.7	0.1	8.9
	Ocp	1.1	1.3	2.1	2.6	12.5	1.7	1.2	2.3	30.5	29.0
1000-1100	Pro	1.9	24.6	30.9	3.2	10.4	15.1	1.3	1.3	0.1	11.4
	Ocp	1.0	1.6	1.9	2.3	8.9	1.8	1.5	7.0	26.0	24.9
1100-1200	Pro	2.0	26.1	28.1	4.0	11.0	14.7	0.7	2.0	0.3	11.1
	Ocp	1.0	1.5	2.0	2.1	8.9	1.5	1.0	9.0	11.7	22.2
1200-1300	Pro	1.4	27.1	27.1	3.2	11.2	11.5	1.4	4.3	0.1	12.6
	Ocp	1.0	1.5	2.1	4.1	8.5	1.7	1.5	13.1	12.0	21.4
1300-1400	Pro	3.7	25.8	20.9	1.6	14.3	12.3	2.5	4.1	0.3	14.4
	Ocp	1.0	1.3	2.0	5.0	8.2	1.6	1.2	10.0	13.3	25.8
1400-1500	Pro	2.3	29.3	23.9	3.5	11.3	17.1	0.6	0.6	0.1	11.3
	Ocp	1.3	1.4	1.9	3.4	9.1	1.8	1.5	5.0	24.0	25.8
1500-1600	Pro	1.8	36.1	23.4	3.6	7.7	11.5	2.1	3.0	0.2	10.7
	Ocp	1.0	1.4	2.0	4.8	11.2	1.7	1.6	13.9	8.3	27.5
1600-1700	Pro	1.9	28.0	23.6	5.1	8.3	11.5	3.2	7.0	0.1	11.4
	Ocp	1.0	1.3	1.7	3.3	11.8	1.5	1.6	9.0	28.0	34.5
1700-1800	Pro	2.9	39.4	24.0	1.7	8.8	8.8	0.3	3.1	0.3	10.7
	Ocp	1.3	1.4	1.7	2.3	12.5	2.0	1.0	12.7	29.8	43.2
1800-1900	Pro	8.5	40.5	18.2	1.5	11.7	6.8	0.0	1.8	0.0	11.0
	Ocp	1.2	1.5	2.0	6.4	14.4	2.0	0.0	17.7	0.0	51.7
1900-2000	Pro	3.4	42.0	23.1	0.7	10.0	5.5	0.0	1.7	0.3	13.3
	Ocp	1.2	1.2	2.1	2.0	13.7	1.5	0.0	4.0	29.3	39.2
2000-2100	Pro	2.4	42.7	22.2	1.2	12.1	3.6	0.0	0.4	0.1	15.2
	Ocp	1.0	1.5	2.0	3.3	11.2	1.8	0.0	4.0	5.0	33.4
2100-2200	Pro	7.5	36.2	23.8	0.0	13.7	2.7	0.9	0.9	0.0	14.3
	Ocp	1.5	1.6	2.0	0.0	10.0	2.0	1.0	5.5	0.0	29.1
2200-2300	Pro	5.3	33.8	29.9	0.4	13.2	2.6	0.0	0.4	0.0	14.4
	Ocp	1.2	1.5	1.8	4.0	7.1	2.3	0.0	28.0	0.0	29.1
16 hours	Pro	3.3	34.2	24.7	2.5	10.4	9.7	1.0	2.5	0.1	11.6
	Ocp	1.2	1.4	2.0	3.4	10.8	1.7	1.4	10.8	22.9	34.0

**Legend**

- Pro.** Proportion of vehicles in % (Sum may not add up to 100% due to figure rounding)
- Ocp.** Average occupancy of vehicles
- M&H** Medium and Heavy