

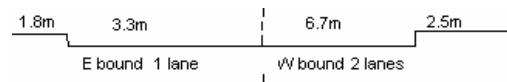
YEAR 2006

CORE STATION 1107

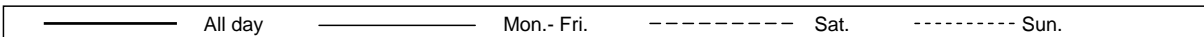
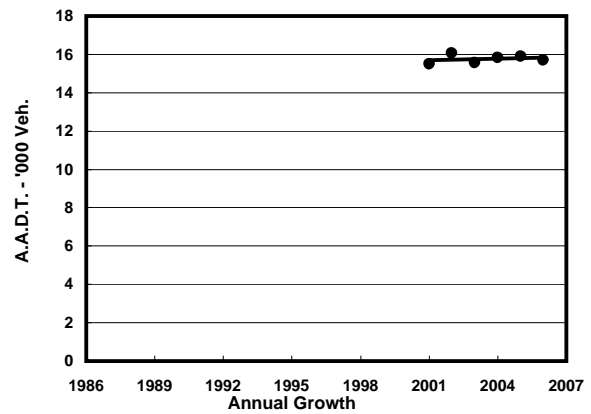
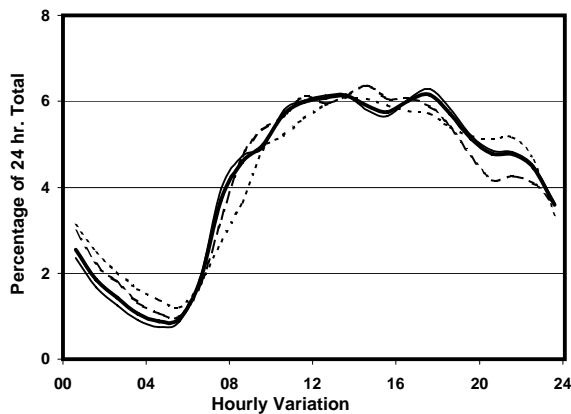
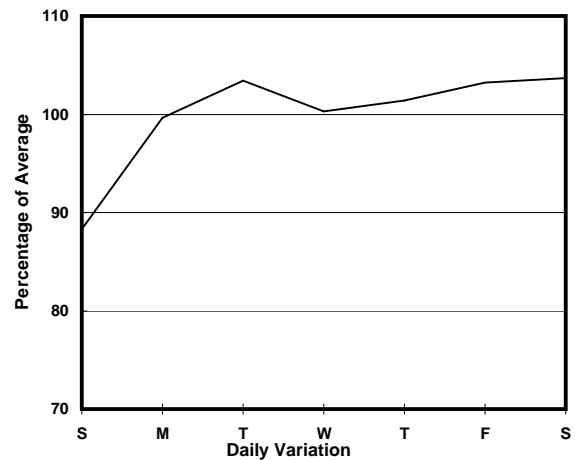
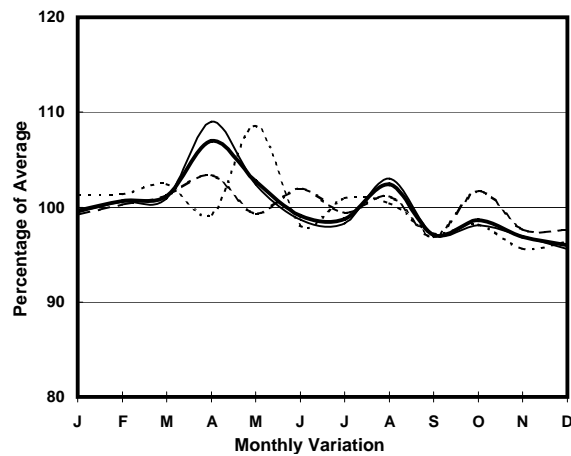
ROAD NETWORK MINOR

ROAD TYPE LOCAL DISTRIBUTOR

LINK TUNG LO WAN RD (from CAUSEWAY RD to MORETON TERRACE)



1. TRAFFIC FLOW VARIATION AND GROWTH



2. TRAFFIC CHARACTERISTICS (BY DIRECTION)

Parameter	All - Day	Mon. - Fri.	Sat.	Sun.
EAST BOUND				
A.A.D.T.	3370	3420	3620	3050
R 12 / 24 - %	72.2	72.7	73.1	68.5
R 16 / 24 - %	88.7	89.5	87.7	85.6
AM Peak Hour	0900-1000	0900-1000	0900-1000	0900-1000
One-way flow at AM peak hour	190	190	220	160
T - % (AM)	-	-	-	-
PM Peak Hour	1600-1700	1600-1700	1600-1700	1600-1700
One-way flow at PM peak hour	230	230	240	190
T - % (PM)	-	2.1	-	-
Prop.of commercial vehicles - 16 hr.	-	1.5	-	-
WEST BOUND				
A.A.D.T.	12340	12650	12760	10940
R 12 / 24 - %	65.2	65.9	65.3	61.4
R 16 / 24 - %	85.1	85.9	83.3	82.4
AM Peak Hour	0900-1000	0800-0900	0900-1000	0900-1000
One-way flow at AM peak hour	590	610	660	530
T - % (AM)	-	11.4	-	-
PM Peak Hour	1700-1800	1700-1800	1600-1700	1700-1800
One-way flow at PM peak hour	760	800	750	640
T - % (PM)	-	9.3	-	-
Prop.of commercial vehicles - 16 hr.	-	7.6	-	-

3. OTHER INFORMATION AND COMMENT

4. Vehicle classification and occupancy - Monday to Friday

Time		Class of vehicle									
		Motor	Private	Taxi	Private	PLB	Goods veh.		Non	Fr. Bus	
		Cycle	Car		LB		Light	M & H	Fr. Bus	SD	DD
0700-0800	Pro	5.0	15.7	50.7	4.3	0.0	6.4	0.0	12.1	0.2	5.5
	Ocp	1.0	1.3	1.6	10.2	0.0	1.6	0.0	30.2	26.0	30.8
0800-0900	Pro	4.6	60.6	13.9	2.1	0.0	9.8	2.1	3.6	0.0	3.5
	Ocp	1.4	1.6	2.1	8.3	0.0	1.9	1.5	17.4	0.0	31.7
0900-1000	Pro	5.5	50.3	20.6	1.0	1.0	15.6	1.0	1.0	0.1	3.8
	Ocp	1.2	1.5	1.9	3.5	10.0	2.0	1.0	7.5	23.0	22.1
1000-1100	Pro	4.3	26.8	45.0	2.9	0.0	15.3	0.5	1.9	0.1	3.1
	Ocp	1.0	1.3	1.4	3.0	0.0	1.6	2.0	3.3	7.0	16.9
1100-1200	Pro	4.4	32.3	36.7	1.5	0.0	20.6	0.5	1.5	0.1	2.4
	Ocp	1.0	1.1	1.3	1.3	0.0	1.7	1.0	1.7	11.0	23.3
1200-1300	Pro	3.9	28.9	44.1	1.0	0.0	15.7	1.5	2.4	0.1	2.4
	Ocp	1.0	1.4	1.5	3.0	0.0	1.6	2.0	23.0	11.0	23.1
1300-1400	Pro	2.3	33.6	42.5	1.9	0.0	13.6	1.4	1.9	0.0	2.8
	Ocp	1.0	1.3	1.5	2.0	0.0	1.9	1.3	8.5	0.0	19.7
1400-1500	Pro	1.9	40.5	32.1	2.3	0.0	17.7	0.9	1.9	0.1	2.6
	Ocp	1.0	1.3	1.7	1.8	0.0	1.8	3.0	3.5	12.0	21.1
1500-1600	Pro	7.0	38.4	34.6	1.9	0.0	13.1	1.4	0.9	0.1	2.6
	Ocp	1.0	1.6	1.5	2.0	0.0	1.9	1.7	3.5	7.0	13.7
1600-1700	Pro	2.9	41.9	36.1	2.4	0.5	9.6	1.9	1.9	0.0	2.8
	Ocp	1.2	1.4	1.5	1.8	7.0	1.9	2.3	6.3	0.0	34.4
1700-1800 Peak hour	Pro	3.4	28.3	46.0	3.8	1.0	9.6	1.0	4.3	0.0	2.8
	Ocp	1.0	1.7	1.4	4.4	2.0	1.5	1.0	10.6	0.0	18.6
1800-1900	Pro	5.7	41.9	39.6	1.1	0.0	5.1	0.6	2.3	0.3	3.5
	Ocp	1.3	1.5	1.8	5.0	0.0	1.3	1.0	9.8	13.0	20.2
1900-2000	Pro	7.7	47.0	36.0	0.5	0.0	1.4	1.4	2.9	0.1	3.0
	Ocp	1.3	1.4	1.6	5.0	0.0	1.7	1.3	3.0	5.0	10.9
2000-2100	Pro	7.5	35.3	49.2	0.0	2.0	3.0	0.0	0.0	0.1	3.0
	Ocp	1.1	1.4	1.5	0.0	1.0	1.7	0.0	0.0	7.0	7.0
2100-2200	Pro	4.1	24.5	67.3	0.0	0.0	1.0	0.0	0.0	0.3	2.8
	Ocp	1.4	1.7	1.3	0.0	0.0	1.5	0.0	0.0	1.0	6.5
2200-2300	Pro	1.4	32.6	56.4	0.0	0.7	4.1	0.0	1.4	0.2	3.4
	Ocp	1.0	1.9	1.4	0.0	2.0	1.5	0.0	8.5	1.0	5.9
16 hours	Pro	4.5	36.5	40.2	1.7	0.3	10.4	0.9	2.3	0.1	3.1
	Ocp	1.1	1.5	1.5	4.1	3.7	1.7	1.7	14.2	9.9	19.5

Legend

- Pro.** Proportion of vehicles in % (Sum may not add up to 100% due to figure rounding)
- Ocp.** Average occupancy of vehicles
- M&H** Medium and Heavy