

YEAR 2006

CORE STATION 5022

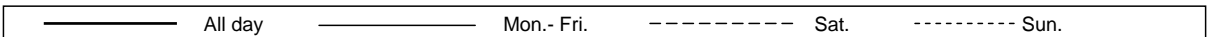
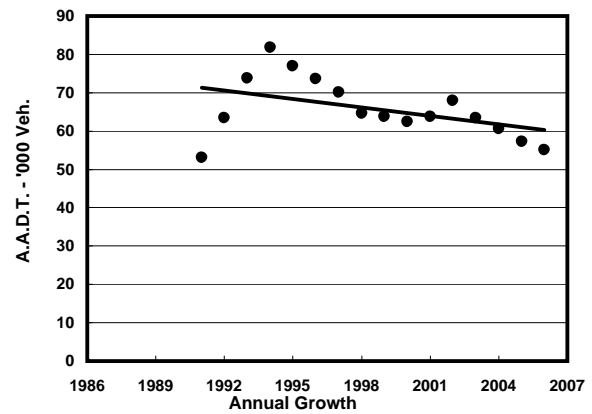
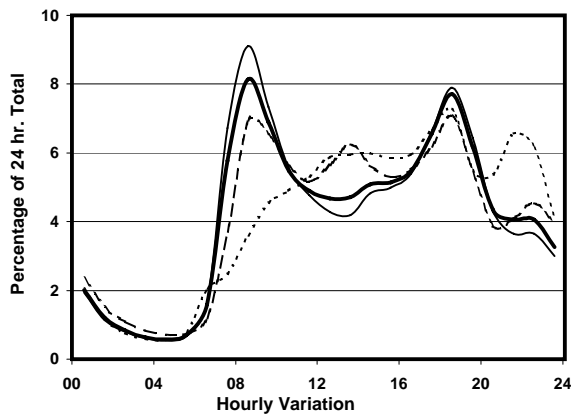
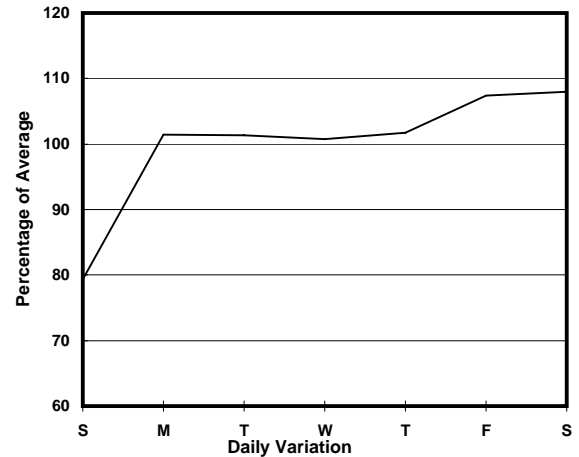
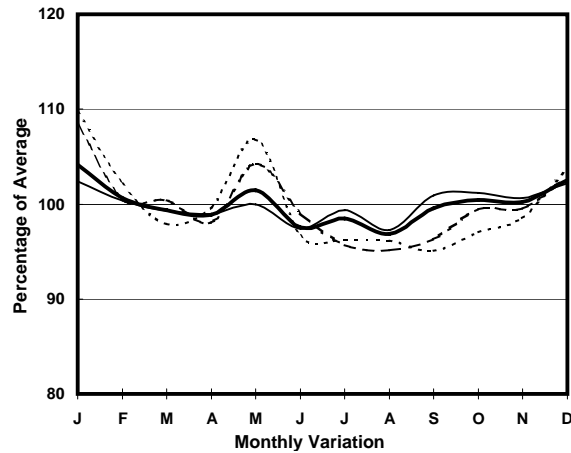
ROAD NETWORK MAJOR

ROAD TYPE URBAN TRUNK ROAD

LINK TATE'S CAIRN TUNNEL (from TOLL PLAZA to SOUTH PORTAL)



1. TRAFFIC FLOW VARIATION AND GROWTH



2. TRAFFIC CHARACTERISTICS (BY DIRECTION)

Parameter	All - Day	Mon. - Fri.	Sat.	Sun.
SOUTH BOUND				
A.A.D.T.	26750	27730	29000	21770
R 12 / 24 - %	75.1	76.8	73.3	67.2
R 16 / 24 - %	90.2	90.7	89	88.5
AM Peak Hour	0800-0900	0800-0900	0800-0900	0900-1000
One-way flow at AM peak hour	2670	3080	2640	1090
T - % (AM)	-	17.8	-	-
PM Peak Hour	1800-1900	1800-1900	1800-1900	1800-1900
One-way flow at PM peak hour	1890	1910	2050	1780
T - % (PM)	-	13.1	-	-
Prop.of commercial vehicles - 16 hr.	-	15.6	-	-
NORTH BOUND				
A.A.D.T.	28310	29350	31020	22760
R 12 / 24 - %	66.2	66.9	66.2	61.8
R 16 / 24 - %	88.3	88.8	86.3	87.6
AM Peak Hour	0800-0900	0800-0900	0900-1000	0900-1000
One-way flow at AM peak hour	1810	2110	1600	940
T - % (AM)	-	14.8	-	-
PM Peak Hour	1800-1900	1800-1900	1800-1900	1800-1900
One-way flow at PM peak hour	2350	2600	2200	1450
T - % (PM)	-	13.4	-	-
Prop.of commercial vehicles - 16 hr.	-	15.3	-	-

3. OTHER INFORMATION AND COMMENT

4. Vehicle classification and occupancy - Monday to Friday

Time		Class of vehicle									
		Motor	Private	Taxi	Private	PLB	Goods veh.		Non	Fr. Bus	
		Cycle	Car		LB		Light	M & H	Fr. Bus	SD	DD
0700-0800	Pro	4.4	49.8	11.7	0.4	0.0	15.2	6.7	4.2	0.0	7.7
	Ocp	1.1	1.7	2.1	2.7	0.0	2.0	1.4	32.9	0.0	72.1
0800-0900 Peak hour	Pro	4.0	59.7	6.2	0.4	0.0	13.2	6.5	3.8	0.0	6.3
	Ocp	1.1	1.4	2.0	6.6	0.0	1.7	1.5	35.3	0.0	85.6
0900-1000	Pro	1.9	54.7	11.9	0.6	0.0	16.2	7.3	1.9	0.0	5.6
	Ocp	1.0	1.3	1.8	2.6	0.0	1.8	1.4	14.3	0.0	43.3
1000-1100	Pro	2.1	46.9	7.5	1.3	0.0	23.7	10.9	1.4	0.0	6.2
	Ocp	1.1	1.4	2.0	2.3	0.0	1.7	1.6	12.2	0.0	30.9
1100-1200	Pro	2.5	48.8	9.3	0.2	0.0	23.1	8.3	1.3	0.0	6.6
	Ocp	1.2	1.4	1.9	1.0	0.0	1.8	1.5	19.0	0.0	31.9
1200-1300	Pro	0.9	55.0	5.7	1.0	0.0	20.6	8.5	1.9	0.0	6.5
	Ocp	1.0	1.4	2.1	3.0	0.0	1.7	1.4	21.6	0.0	30.8
1300-1400	Pro	2.9	44.5	7.6	0.7	0.0	24.9	10.9	1.7	0.0	6.9
	Ocp	1.2	1.4	2.1	1.8	0.0	1.8	1.4	10.2	0.0	34.0
1400-1500	Pro	1.9	46.5	7.3	0.7	0.0	24.5	12.5	1.2	0.1	5.4
	Ocp	1.1	1.5	2.0	1.8	0.0	1.6	1.5	16.8	1.0	27.1
1500-1600	Pro	1.2	47.3	9.0	0.8	0.0	24.6	9.6	1.2	0.0	6.3
	Ocp	1.1	1.6	1.9	2.0	0.0	1.6	1.4	10.6	0.0	31.4
1600-1700	Pro	2.5	48.5	10.2	0.7	0.0	23.7	6.2	2.0	0.1	6.2
	Ocp	1.1	1.5	1.7	2.7	0.0	1.6	1.6	18.2	1.0	35.1
1700-1800	Pro	3.5	52.5	8.4	0.4	0.0	19.7	6.4	1.9	0.0	7.3
	Ocp	1.1	1.5	1.7	1.7	0.0	1.7	1.4	22.1	0.0	46.5
1800-1900	Pro	4.1	61.3	6.0	0.5	0.0	14.9	4.7	2.1	0.0	6.5
	Ocp	1.3	1.5	2.1	2.2	0.0	1.7	1.3	28.4	0.0	70.2
1900-2000	Pro	3.0	68.4	5.7	0.6	0.0	10.2	3.5	2.6	0.0	6.1
	Ocp	1.2	1.5	1.9	1.5	0.0	1.9	1.4	31.3	0.0	65.7
2000-2100	Pro	2.6	70.5	9.2	0.2	0.0	5.9	3.2	1.3	0.0	7.1
	Ocp	1.1	1.4	2.2	1.0	0.0	1.7	1.7	27.8	0.0	59.9
2100-2200	Pro	4.1	61.5	14.9	0.0	0.0	5.9	3.9	1.4	0.0	8.2
	Ocp	1.3	1.4	2.2	0.0	0.0	1.7	1.7	23.4	0.0	47.7
2200-2300	Pro	3.2	67.4	12.5	0.4	0.0	5.7	0.8	1.9	0.0	8.2
	Ocp	1.2	1.6	2.1	1.5	0.0	1.4	1.5	29.0	0.0	52.0
16 hours	Pro	2.9	55.5	8.6	0.6	0.0	16.9	6.8	2.1	0.1	6.6
	Ocp	1.1	1.5	2.0	2.5	0.0	1.7	1.5	25.4	1.0	51.1

Legend

- Pro.** Proportion of vehicles in % (Sum may not add up to 100% due to figure rounding)
- Ocp.** Average occupancy of vehicles
- M&H** Medium and Heavy