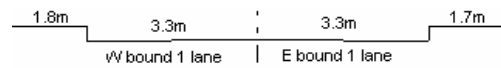


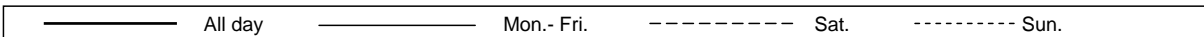
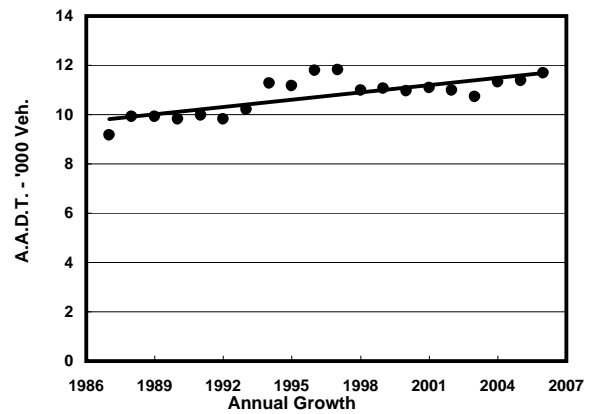
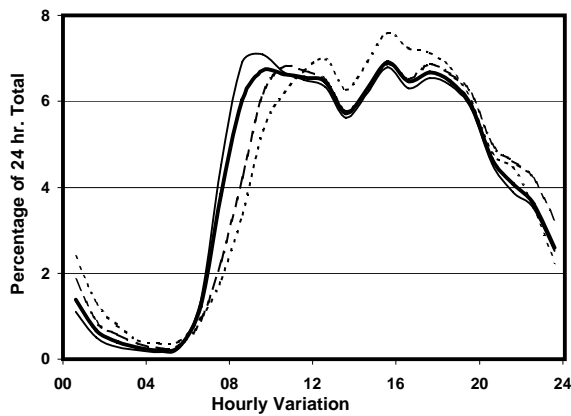
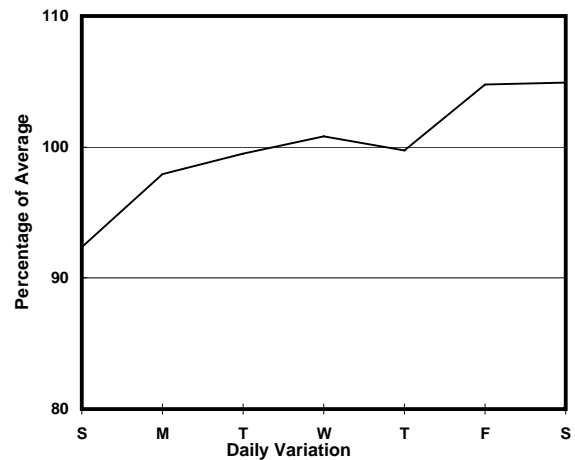
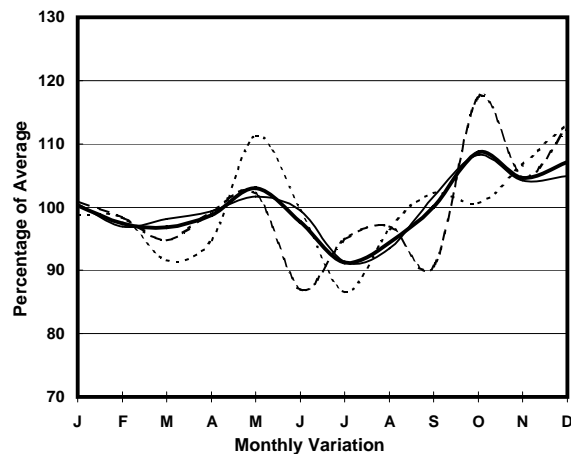
YEAR

2006

LINK PEAK RD (from MT. AUSTIN RD to MAGAZINE GAP RD)

CORE STATION
ROAD NETWORK
ROAD TYPE1014
MAJOR
DISTRICT DISTRIBUTOR

1. TRAFFIC FLOW VARIATION AND GROWTH



2. TRAFFIC CHARACTERISTICS (BY DIRECTION)

Parameter	All - Day	Mon. - Fri.	Sat.	Sun.
EAST BOUND				
A.A.D.T.	5840	5890	6140	5450
R 12 / 24 - %	73.9	74.6	71.6	72.6
R 16 / 24 - %	92.9	93.5	91.7	91.2
AM Peak Hour	0900-1000	0900-1000	0900-1000	0900-1000
One-way flow at AM peak hour	400	420	390	310
T - % (AM)	-	-	-	-
PM Peak Hour	1800-1900	1800-1900	1700-1800	1600-1700
One-way flow at PM peak hour	390	390	410	390
T - % (PM)	-	-	-	-
Prop.of commercial vehicles - 16 hr.	-	-	-	-

WEST BOUND				
A.A.D.T.	5850	5920	6150	5430
R 12 / 24 - %	75.6	77	71.6	72.1
R 16 / 24 - %	93.1	93.8	91.6	91
AM Peak Hour	0900-1000	0900-1000	0900-1000	0900-1000
One-way flow at AM peak hour	390	420	370	270
T - % (AM)	-	-	-	-
PM Peak Hour	1700-1800	1700-1800	1700-1800	1700-1800
One-way flow at PM peak hour	410	410	430	410
T - % (PM)	-	-	-	-
Prop.of commercial vehicles - 16 hr.	-	-	-	-

3. OTHER INFORMATION AND COMMENT