

YEAR

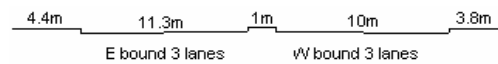
2006

LINK

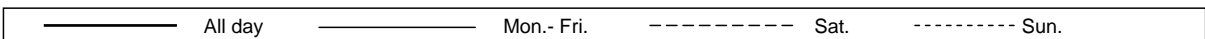
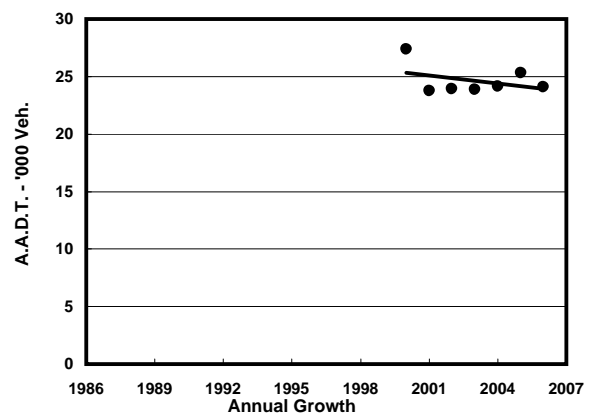
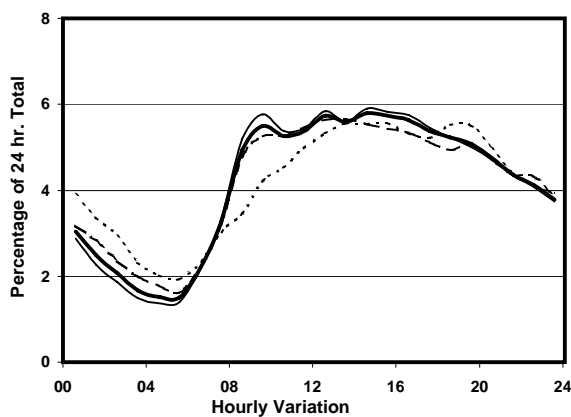
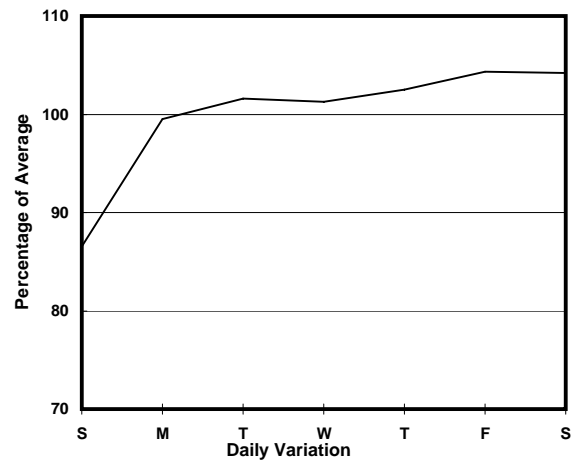
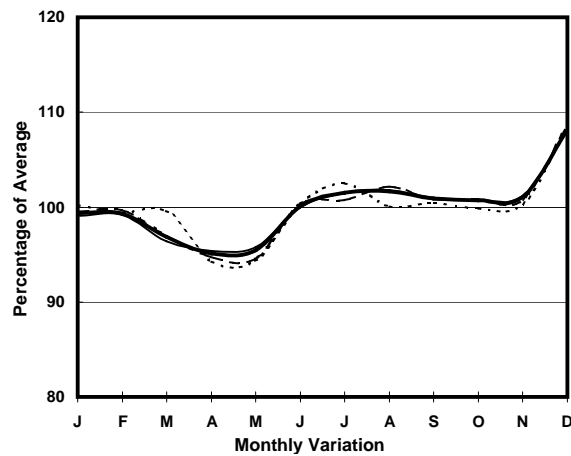
HENNESSY RD (from LUARD RD to FLEMING RD)

CORE STATION
ROAD NETWORK
ROAD TYPE

1029
MAJOR
PRIMARY DISTRIBUTOR



1. TRAFFIC FLOW VARIATION AND GROWTH



2. TRAFFIC CHARACTERISTICS (BY DIRECTION)

Parameter	All - Day	Mon. - Fri.	Sat.	Sun.
EAST BOUND				
A.A.D.T.	12870	13190	13780	11080
R 12 / 24 - %	62.3	63.8	60.5	56
R 16 / 24 - %	80.2	81.5	78.4	74.7
AM Peak Hour	0900-1000	0900-1000	0900-1000	0900-1000
One-way flow at AM peak hour	690	740	710	440
T - % (AM)	-	-	-	-
PM Peak Hour	1600-1700	1600-1700	1600-1700	1800-1900
One-way flow at PM peak hour	720	750	730	590
T - % (PM)	-	-	-	-
Prop.of commercial vehicles - 16 hr.	-	-	-	-

WEST BOUND				
A.A.D.T.	11230	11550	11570	9880
R 12 / 24 - %	64.7	65.7	63.1	60.8
R 16 / 24 - %	83.4	84.3	82.3	80.1
AM Peak Hour	0900-1000	0900-1000	0900-1000	0900-1000
One-way flow at AM peak hour	630	680	620	440
T - % (AM)	-	-	-	-
PM Peak Hour	1600-1700	1600-1700	1600-1700	1800-1900
One-way flow at PM peak hour	640	670	630	570
T - % (PM)	-	-	-	-
Prop.of commercial vehicles - 16 hr.	-	-	-	-

3. OTHER INFORMATION AND COMMENT