

YEAR

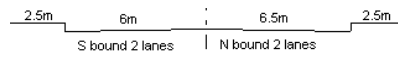
2006

LINK

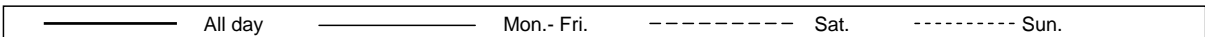
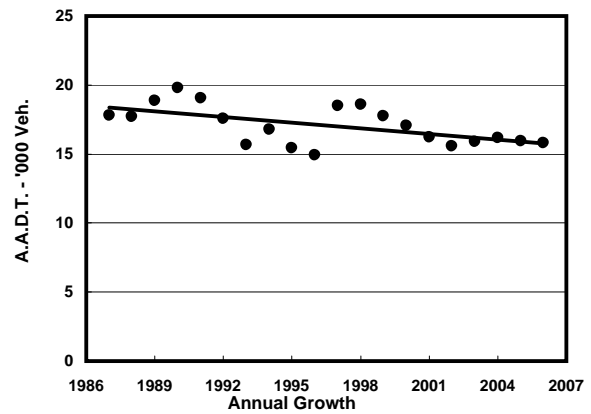
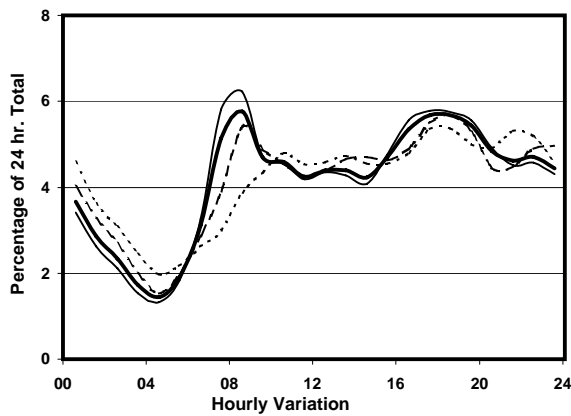
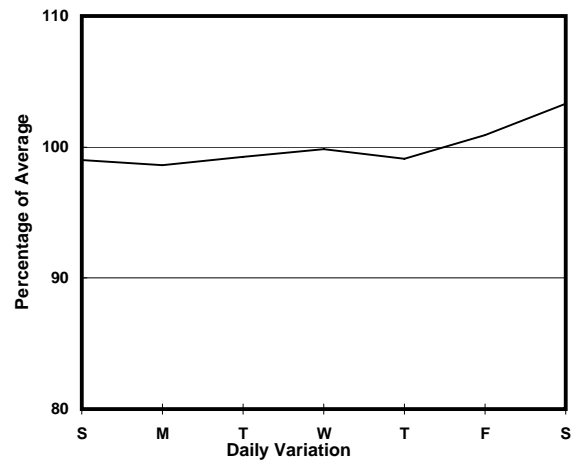
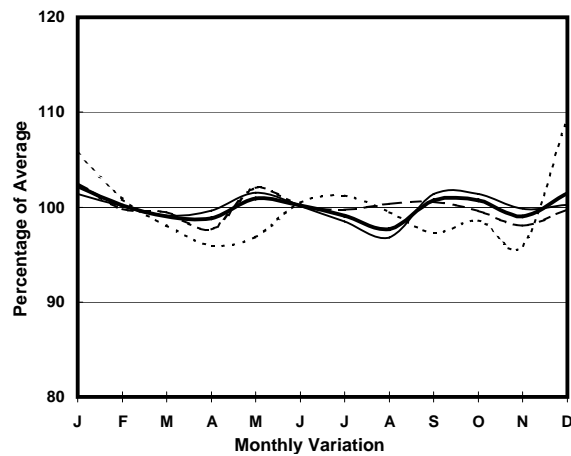
HIU KWONG ST (from SAU MING RD to HIP WO ST)

CORE STATION
ROAD NETWORK
ROAD TYPE

3018
MAJOR
DISTRICT DISTRIBUTOR



1. TRAFFIC FLOW VARIATION AND GROWTH



2. TRAFFIC CHARACTERISTICS (BY DIRECTION)

Parameter	All - Day	Mon. - Fri.	Sat.	Sun.
SOUTH BOUND				
A.A.D.T.	7380	7310	7690	7480
R 12 / 24 - %	56.7	57.5	55.9	53.9
R 16 / 24 - %	78.1	79.1	76.5	75.3
AM Peak Hour	0800-0900	0700-0800	0800-0900	0900-1000
One-way flow at AM peak hour	360	410	360	310
T - % (AM)	-	-	-	-
PM Peak Hour	1800-1900	1800-1900	1800-1900	1800-1900
One-way flow at PM peak hour	450	460	460	420
T - % (PM)	-	-	-	-
Prop.of commercial vehicles - 16 hr.	-	-	-	-
NORTH BOUND				
A.A.D.T.	8440	8430	8650	8240
R 12 / 24 - %	60.8	62.3	59	55.1
R 16 / 24 - %	78.8	80.1	76.7	74.7
AM Peak Hour	0800-0900	0800-0900	0800-0900	0900-1000
One-way flow at AM peak hour	550	600	520	370
T - % (AM)	-	-	-	-
PM Peak Hour	1700-1800	1700-1800	1700-1800	1700-1800
One-way flow at PM peak hour	480	490	470	440
T - % (PM)	-	-	-	-
Prop.of commercial vehicles - 16 hr.	-	-	-	-

3. OTHER INFORMATION AND COMMENT