

YEAR

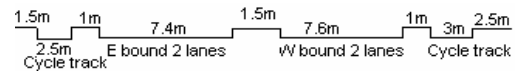
2006

LINK

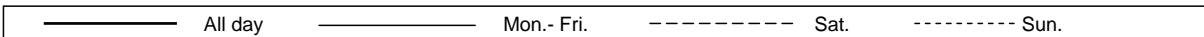
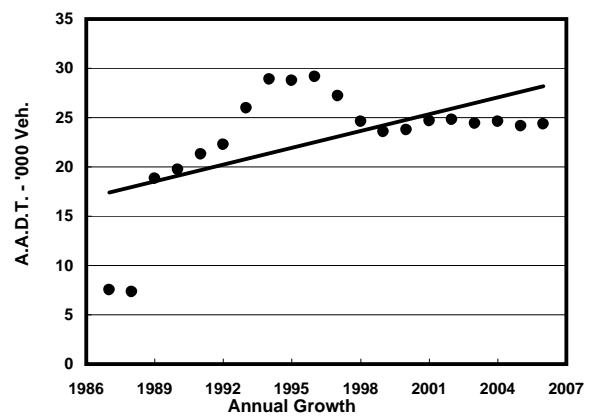
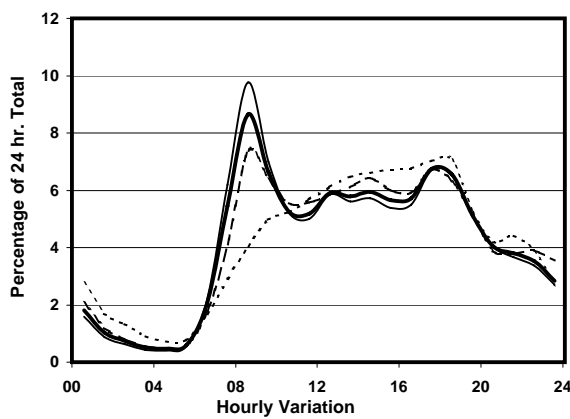
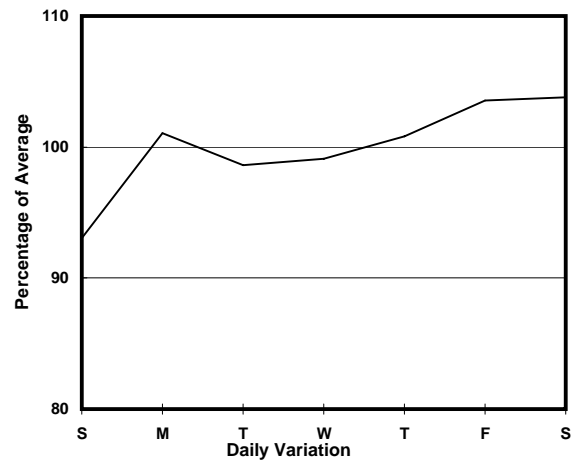
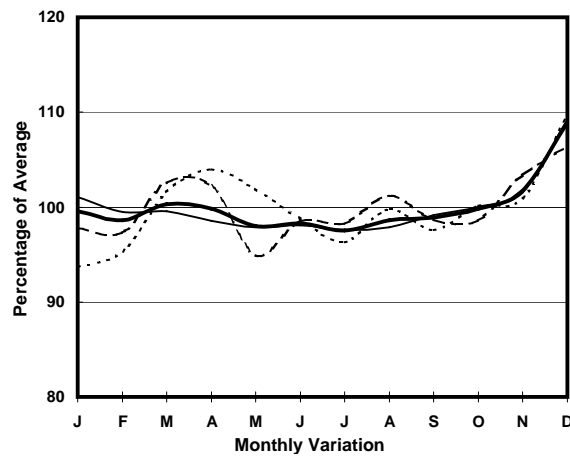
TING KOK RD (from NAM WAN RD to DAI KWAI ST)

CORE STATION  
ROAD NETWORK  
ROAD TYPE

5006  
MAJOR  
PRIMARY DISTRIBUTOR



## 1. TRAFFIC FLOW VARIATION AND GROWTH



## 2. TRAFFIC CHARACTERISTICS (BY DIRECTION)

Parameter	All - Day	Mon. - Fri.	Sat.	Sun.
<b>EAST BOUND</b>				
A.A.D.T.	11280	11290	11890	10930
R 12 / 24 - %	69.4	69.7	68.8	68.2
R 16 / 24 - %	89.3	90	88	86.9
AM Peak Hour	0800-0900	0800-0900	0800-0900	0900-1000
One-way flow at AM peak hour	890	1030	730	490
T - % (AM)	-	-	-	-
PM Peak Hour	1800-1900	1800-1900	1700-1800	1600-1700
One-way flow at PM peak hour	740	770	770	760
T - % (PM)	-	-	-	-
Prop.of commercial vehicles - 16 hr.	-	-	-	-
<b>WEST BOUND</b>				
A.A.D.T.	13070	13290	13530	11880
R 12 / 24 - %	77.1	78.4	75.5	71.1
R 16 / 24 - %	90.6	91.2	89.9	87.9
AM Peak Hour	0800-0900	0800-0900	0800-0900	0900-1000
One-way flow at AM peak hour	1210	1380	1140	650
T - % (AM)	-	-	-	-
PM Peak Hour	1700-1800	1700-1800	1700-1800	1800-1900
One-way flow at PM peak hour	920	920	940	960
T - % (PM)	-	-	-	-
Prop.of commercial vehicles - 16 hr.	-	-	-	-

## 3. OTHER INFORMATION AND COMMENT