

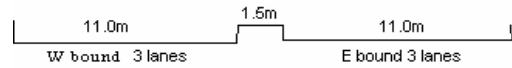
YEAR 2006

CORE STATION 5031

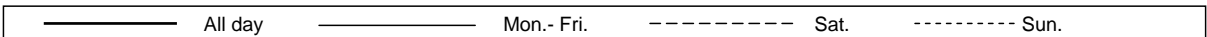
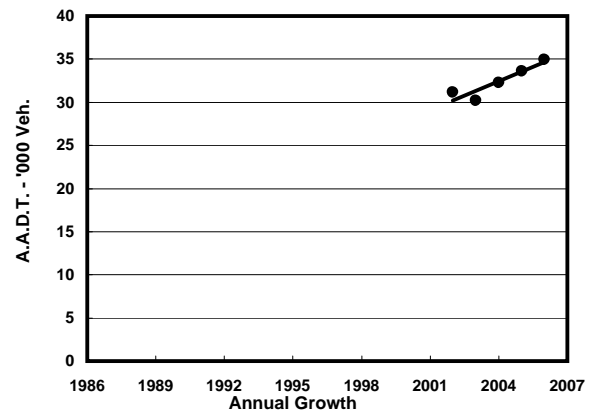
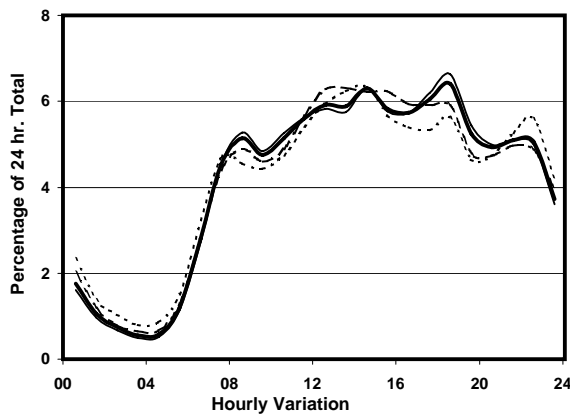
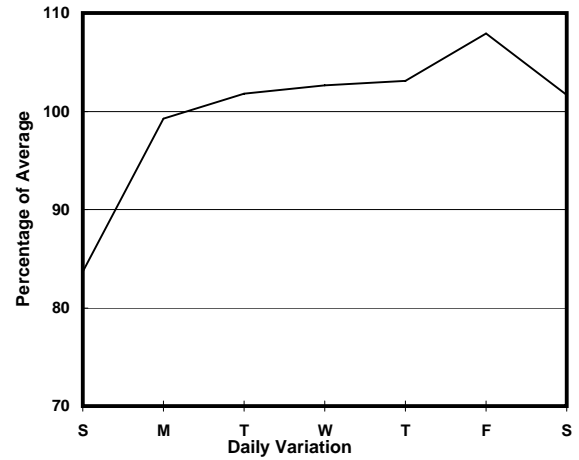
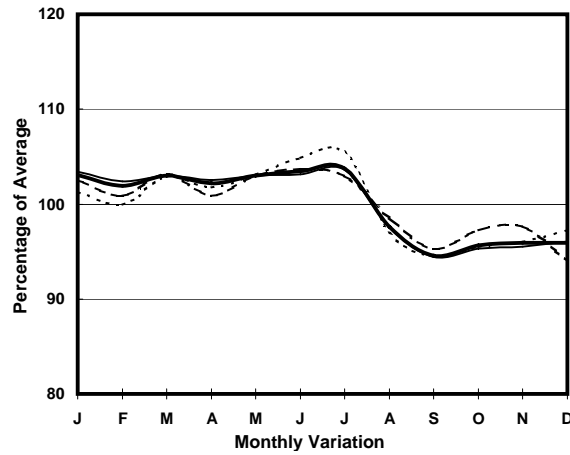
ROAD NETWORK MAJOR

ROAD TYPE EXPRESSWAY

LINK NORTH LANTAU HIGHWAY (from TUNG CHUNG
EASTERN INT to WESTERN END AT CHEK LAP KOK)



1. TRAFFIC FLOW VARIATION AND GROWTH



2. TRAFFIC CHARACTERISTICS (BY DIRECTION)

Parameter	All - Day	Mon. - Fri.	Sat.	Sun.
EAST BOUND				
A.A.D.T.	17360	17950	17880	15010
R 12 / 24 - %	64.7	65.1	65	62.1
R 16 / 24 - %	86.2	86.9	85	83.2
AM Peak Hour	0800-0900	0800-0900	0800-0900	0800-0900
One-way flow at AM peak hour	700	710	740	640
T - % (AM)	-	-	-	-
PM Peak Hour	1800-1900	1800-1900	1800-1900	1800-1900
One-way flow at PM peak hour	1280	1380	1190	930
T - % (PM)	-	-	-	-
Prop.of commercial vehicles - 16 hr.	-	-	-	-
WEST BOUND				
A.A.D.T.	17620	18410	17920	14560
R 12 / 24 - %	69.8	70.3	69.5	66.8
R 16 / 24 - %	89	89.6	88.3	86.1
AM Peak Hour	0800-0900	0800-0900	0800-0900	0700-0800
One-way flow at AM peak hour	1100	1200	1010	840
T - % (AM)	-	-	-	-
PM Peak Hour	1700-1800	1700-1800	1600-1700	1700-1800
One-way flow at PM peak hour	990	1040	1040	810
T - % (PM)	-	-	-	-
Prop.of commercial vehicles - 16 hr.	-	-	-	-

3. OTHER INFORMATION AND COMMENT