

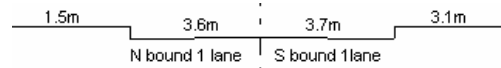
YEAR 2006

CORE STATION 5102

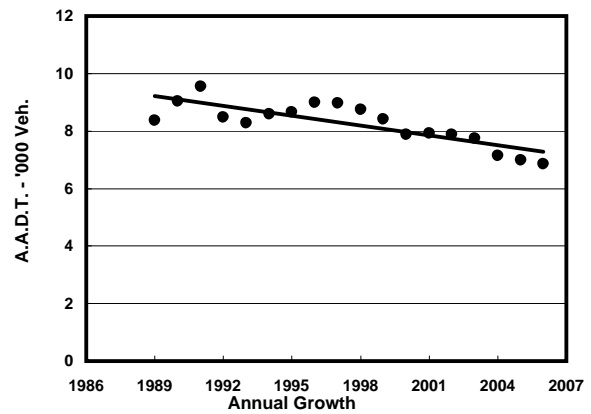
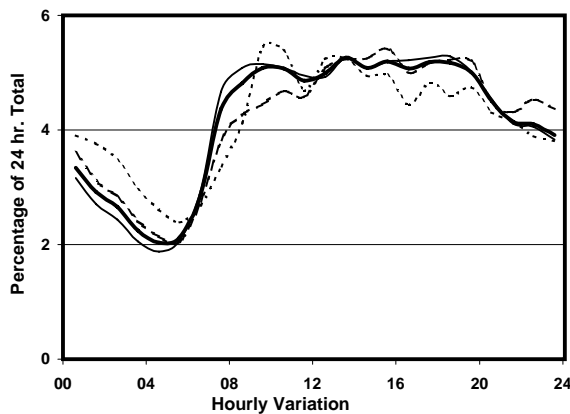
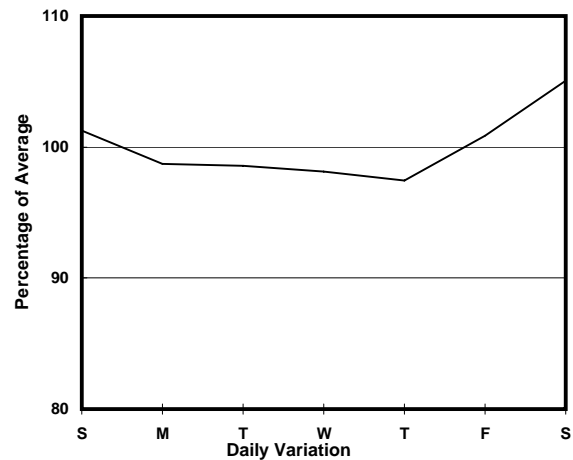
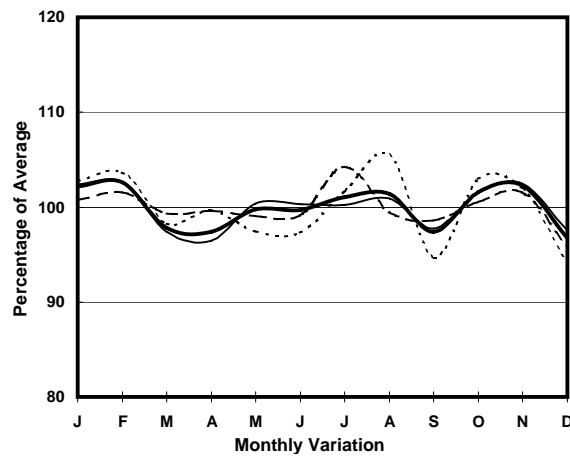
ROAD NETWORK MINOR

ROAD TYPE LOCAL DISTRIBUTOR

LINK TSENG CHOI ST (from CASTLE PEAK RD NORTHERN JUNCTION to CASTLE PEAK RD SOUTHERN JUNCTION)



1. TRAFFIC FLOW VARIATION AND GROWTH



— All day — Mon.- Fri. - - - - - Sat. - - - - - Sun.

2. TRAFFIC CHARACTERISTICS (BY DIRECTION)

Parameter	All - Day	Mon. - Fri.	Sat.	Sun.
SOUTH BOUND				
A.A.D.T.	4080	4030	4250	4140
R 12 / 24 - %	60.3	61.2	58.4	57.5
R 16 / 24 - %	78.8	79.7	77.7	75.3
AM Peak Hour	0900-1000	0700-0800	0800-0900	0900-1000
One-way flow at AM peak hour	200	210	190	220
T - % (AM)	-	-	-	-
PM Peak Hour	1800-1900	1800-1900	1700-1800	1700-1800
One-way flow at PM peak hour	220	220	230	210
T - % (PM)	-	-	-	-
Prop.of commercial vehicles - 16 hr.	-	-	-	-
NORTH BOUND				
A.A.D.T.	2770	2730	2930	2800
R 12 / 24 - %	60	61.1	57.9	56.9
R 16 / 24 - %	76.7	77.7	75.3	72.9
AM Peak Hour	0900-1000	0900-1000	0900-1000	0900-1000
One-way flow at AM peak hour	150	140	140	160
T - % (AM)	-	-	-	-
PM Peak Hour	1600-1700	1600-1700	1800-1900	1700-1800
One-way flow at PM peak hour	150	150	150	130
T - % (PM)	-	-	-	-
Prop.of commercial vehicles - 16 hr.	-	-	-	-

3. OTHER INFORMATION AND COMMENT