

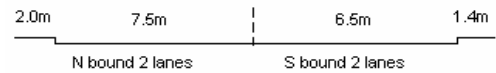
YEAR 2006

COVERAGE (B) STATION 2201

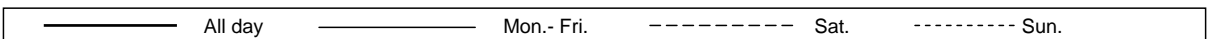
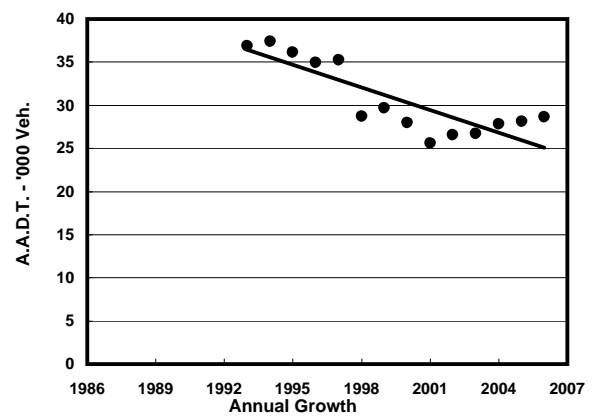
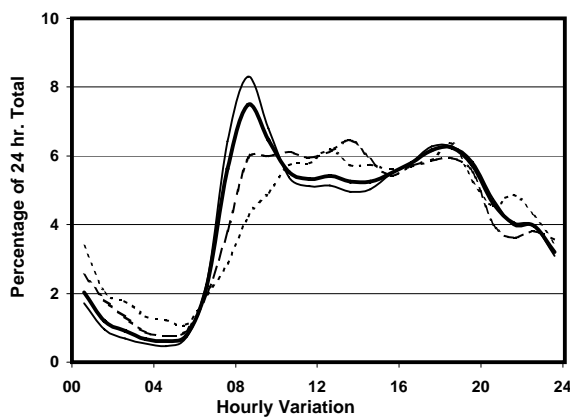
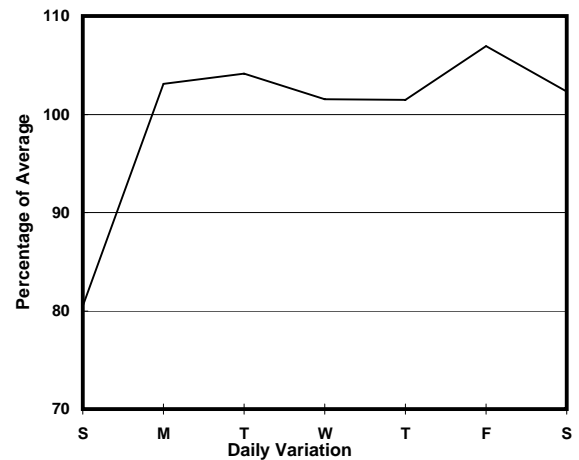
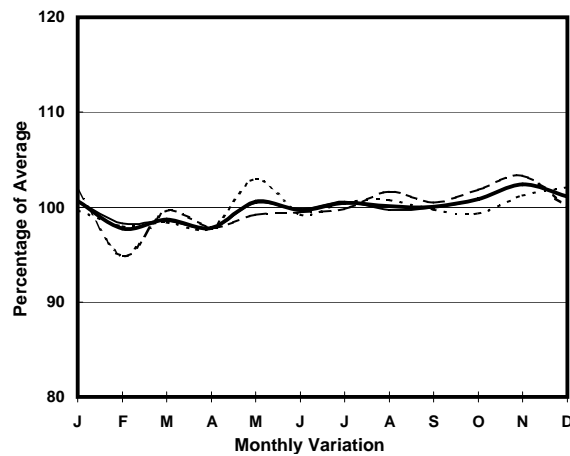
ROAD NETWORK MAJOR

ROAD TYPE PRIMARY DISTRIBUTOR

LINK POK FU LAM RD (from POKFIELD RD to MOUNT DAVIS RD)



1. TRAFFIC FLOW VARIATION AND GROWTH



2. TRAFFIC CHARACTERISTICS (BY DIRECTION)

Parameter	All - Day	Mon. - Fri.	Sat.	Sun.
SOUTH BOUND				
A.A.D.T.	11790	12290	12210	9760
R 12 / 24 - %	68.1	68.7	68.4	64.1
R 16 / 24 - %	88.3	89.5	86.1	83.9
AM Peak Hour	0800-0900	0800-0900	0900-1000	0900-1000
One-way flow at AM peak hour	730	820	660	430
T - % (AM)	-	8.7	-	-
PM Peak Hour	1800-1900	1800-1900	1600-1700	1600-1700
One-way flow at PM peak hour	740	790	750	600
T - % (PM)	-	11.2	-	-
Prop.of commercial vehicles - 16 hr.	-	11.9	-	-
NORTH BOUND				
A.A.D.T.	16840	17660	17400	13560
R 12 / 24 - %	71.3	72.5	69.9	65.3
R 16 / 24 - %	88.4	89.5	86.3	83.6
AM Peak Hour	0800-0900	0800-0900	0900-1000	0900-1000
One-way flow at AM peak hour	1420	1670	1120	730
T - % (AM)	-	8.1	-	-
PM Peak Hour	1700-1800	1700-1800	1800-1900	1800-1900
One-way flow at PM peak hour	1060	1140	1060	890
T - % (PM)	-	11.6	-	-
Prop.of commercial vehicles - 16 hr.	-	9.5	-	-

3. OTHER INFORMATION AND COMMENT

Coverage (B) Station 2201
Year 2006

4. Vehicle classification and occupancy - Monday to Friday

Time		Class of vehicle									
		Motor	Private	Taxi	Private	PLB	Goods veh.		Non	Fr. Bus	
		Cycle	Car		LB		Light	M & H	Fr. Bus	SD	DD
0700-0800	Pro	2.0	24.6	35.5	2.0	14.5	6.6	0.5	6.9	0.1	7.3
	Ocp	1.4	1.5	2.2	5.4	13.0	1.4	1.5	20.9	27.0	54.0
0800-0900 Peak hour	Pro	1.7	44.9	28.3	1.1	12.0	3.7	0.4	3.0	0.2	4.7
	Ocp	1.0	1.4	2.0	5.8	13.6	1.8	1.3	9.7	17.6	56.6
0900-1000	Pro	1.8	38.1	30.0	1.1	12.3	8.8	1.6	1.3	0.1	4.9
	Ocp	1.1	1.4	2.0	3.1	11.1	1.9	1.9	2.0	7.0	34.0
1000-1100	Pro	2.3	27.3	33.7	1.1	12.6	13.5	1.4	1.1	0.2	6.8
	Ocp	1.1	1.3	2.1	1.8	9.2	1.8	1.2	25.2	17.7	19.3
1100-1200	Pro	0.6	27.3	23.4	3.1	17.2	16.1	1.4	3.6	0.1	7.2
	Ocp	1.0	1.3	1.9	1.9	8.3	1.9	1.8	5.9	2.5	17.1
1200-1300	Pro	1.0	28.2	32.4	2.6	12.3	11.0	0.5	4.7	0.2	7.1
	Ocp	1.3	1.5	2.3	2.6	9.5	1.6	3.0	9.2	14.3	17.6
1300-1400	Pro	2.2	22.6	32.8	4.6	13.5	13.7	1.9	1.9	0.1	6.7
	Ocp	1.0	1.4	1.8	1.8	10.5	1.7	1.8	4.3	7.5	18.3
1400-1500	Pro	0.8	29.6	28.8	1.6	11.4	16.7	1.3	2.6	0.2	7.0
	Ocp	1.3	1.5	1.9	2.5	10.0	1.8	2.4	2.6	21.0	18.7
1500-1600	Pro	2.0	26.2	27.3	3.7	11.2	16.3	1.1	5.7	0.2	6.2
	Ocp	1.1	1.6	2.2	3.9	9.4	1.6	1.6	16.7	11.8	21.8
1600-1700	Pro	1.0	27.9	28.2	2.3	14.5	13.4	0.5	3.9	0.1	8.1
	Ocp	1.0	1.4	1.9	4.6	11.1	1.8	1.5	7.7	15.0	33.4
1700-1800	Pro	2.0	30.3	31.7	2.2	13.4	8.1	0.0	4.4	0.3	7.7
	Ocp	1.0	1.6	1.9	2.4	12.3	2.0	0.0	10.9	19.0	36.9
1800-1900	Pro	3.7	34.5	32.5	0.4	14.4	5.0	0.0	2.4	0.2	6.9
	Ocp	1.1	1.5	2.1	1.5	12.9	1.6	0.0	19.1	24.3	53.9
1900-2000	Pro	1.5	33.2	38.5	0.0	13.5	5.3	0.2	1.5	0.2	6.2
	Ocp	1.0	1.5	1.7	0.0	11.7	2.0	2.0	15.4	21.5	42.4
2000-2100	Pro	2.7	34.0	41.0	0.0	13.7	1.3	0.0	0.0	0.1	7.2
	Ocp	1.0	1.4	1.9	0.0	11.0	2.0	0.0	0.0	10.0	27.1
2100-2200	Pro	2.9	38.7	27.9	0.4	17.0	2.9	0.0	0.0	0.4	9.8
	Ocp	1.3	1.6	1.6	2.0	9.5	1.9	0.0	0.0	9.5	23.1
2200-2300	Pro	1.6	21.5	55.3	0.0	12.3	1.3	0.3	0.3	0.3	7.0
	Ocp	1.0	1.5	1.9	0.0	9.7	1.8	3.0	12.0	7.8	17.6
16 hours	Pro	1.9	31.4	32.6	1.6	13.3	8.9	0.7	2.8	0.2	6.7
	Ocp	1.1	1.5	2.0	3.1	11.0	1.8	1.8	12.2	15.0	31.7

Legend

Pro. Proportion of vehicles in % (Sum may not add up to 100% due to figure rounding)
Ocp. Average occupancy of vehicles
M&H Medium and Heavy