

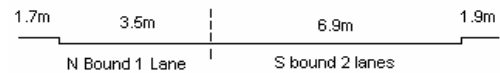
YEAR 2006

COVERAGE (B) STATION 2202

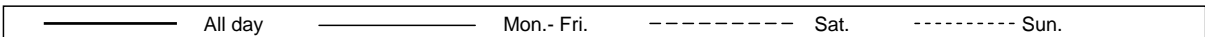
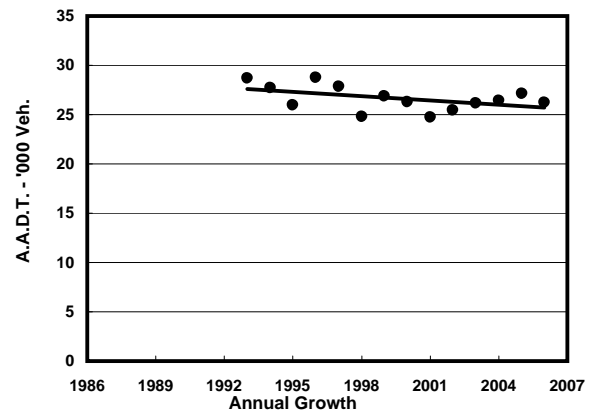
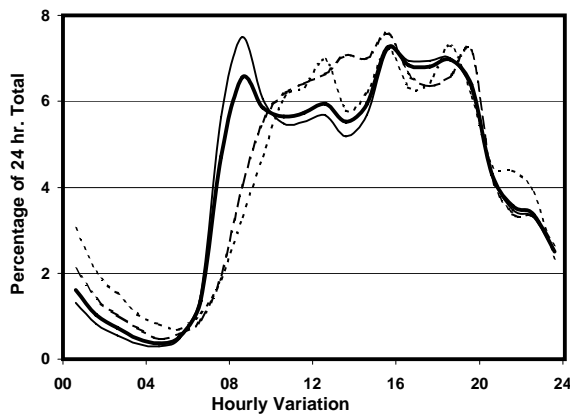
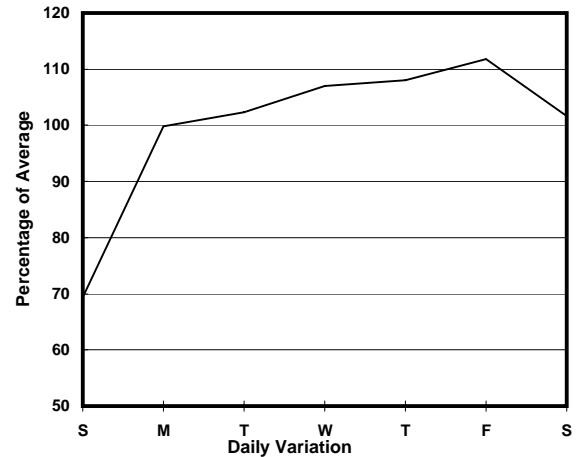
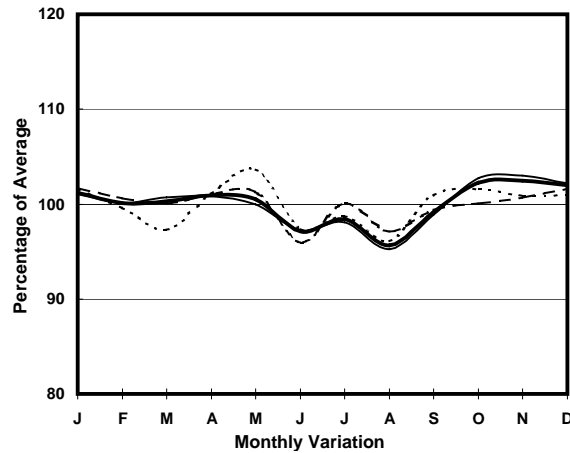
ROAD NETWORK MAJOR

ROAD TYPE DISTRICT DISTRIBUTOR

LINK WONG NAI CHUNG GAP RD (from STUBBS RD FO  
<H119> SOUTHERN END to REPULSE BAY RD)



### 1. TRAFFIC FLOW VARIATION AND GROWTH



### 2. TRAFFIC CHARACTERISTICS (BY DIRECTION)

Parameter	All - Day	Mon. - Fri.	Sat.	Sun.
<b>SOUTH BOUND</b>				
A.A.D.T.	12040	12920	12250	8890
R 12 / 24 - %	74.6	75.2	74	70.9
R 16 / 24 - %	92.1	92.6	91.5	89.4
AM Peak Hour	0900-1000	0800-0900	0900-1000	0900-1000
One-way flow at AM peak hour	690	790	700	450
T - % (AM)	-	16.5	-	-
PM Peak Hour	1600-1700	1600-1700	1600-1700	1800-1900
One-way flow at PM peak hour	840	910	880	620
T - % (PM)	-	7.4	-	-
Prop.of commercial vehicles - 16 hr.	-	6.7	-	-
<b>NORTH BOUND</b>				
A.A.D.T.	14180	15300	14830	9680
R 12 / 24 - %	73.1	74.5	70.3	66.5
R 16 / 24 - %	90.9	91.9	88.9	85.7
AM Peak Hour	0800-0900	0800-0900	0900-1000	0900-1000
One-way flow at AM peak hour	1050	1330	800	430
T - % (AM)	-	6.6	-	-
PM Peak Hour	1800-1900	1700-1800	1800-1900	1800-1900
One-way flow at PM peak hour	1010	1110	1030	730
T - % (PM)	-	5.1	-	-
Prop.of commercial vehicles - 16 hr.	-	5.8	-	-

### 3. OTHER INFORMATION AND COMMENT

**Coverage (B) Station 2202**  
**Year 2006**

**4. Vehicle classification and occupancy - Monday to Friday**

Time		Class of vehicle									
		Motor	Private	Taxi	Private	PLB	Goods veh.		Non	Fr. Bus	
		Cycle	Car		LB		Light	M & H	Fr. Bus	SD	DD
0700-0800	Pro	2.4	47.9	29.0	4.7	1.2	3.9	0.0	7.9	1.2	1.9
	Ocp	1.0	1.5	1.6	10.1	12.0	1.7	0.0	18.0	18.4	31.8
0800-0900 Peak hour	Pro	3.1	58.1	19.6	2.3	1.6	4.7	1.0	8.4	0.6	0.8
	Ocp	1.1	1.4	1.8	6.5	6.6	1.8	1.6	5.7	16.9	28.6
0900-1000	Pro	3.7	62.1	19.2	1.6	0.9	7.6	0.9	2.3	0.6	1.0
	Ocp	1.1	1.4	1.8	3.7	11.5	1.6	1.3	11.9	12.2	36.7
1000-1100	Pro	1.4	53.2	22.4	0.9	1.4	14.4	2.0	2.0	0.8	1.5
	Ocp	1.2	1.4	1.5	2.3	6.6	1.7	1.3	9.4	7.1	16.9
1100-1200	Pro	2.3	49.8	23.7	0.5	0.5	15.2	1.3	4.6	0.8	1.2
	Ocp	1.0	1.4	1.9	1.5	7.5	1.7	1.2	10.9	8.4	19.8
1200-1300	Pro	1.9	60.1	19.6	1.9	0.5	9.2	0.7	4.6	0.5	1.0
	Ocp	1.0	1.4	1.8	4.6	11.0	1.6	1.0	9.3	9.0	18.4
1300-1400	Pro	2.6	51.8	23.1	2.9	1.2	10.7	1.2	4.3	0.9	1.4
	Ocp	1.1	1.4	1.4	4.4	3.5	1.9	1.5	13.3	8.6	19.8
1400-1500	Pro	2.5	48.6	29.6	1.5	0.7	10.9	1.5	3.0	0.7	1.1
	Ocp	1.1	1.4	1.6	1.8	7.7	1.6	1.3	12.9	14.1	17.4
1500-1600	Pro	2.0	57.5	19.8	3.5	0.8	8.8	0.6	5.7	0.5	0.9
	Ocp	1.1	1.4	1.9	5.4	11.5	1.6	1.3	8.6	16.9	21.9
1600-1700	Pro	2.6	58.8	21.2	1.2	0.2	8.1	0.6	6.0	0.5	0.8
	Ocp	1.1	1.5	2.0	3.8	13.0	1.9	2.0	12.2	13.8	22.1
1700-1800	Pro	3.8	59.3	21.7	2.0	0.8	8.1	0.0	3.0	0.5	0.9
	Ocp	1.1	1.5	1.9	1.7	12.0	1.8	0.0	14.3	19.2	39.3
1800-1900	Pro	2.1	63.8	24.5	0.4	0.6	3.9	0.0	3.2	0.5	0.9
	Ocp	1.2	1.6	1.8	5.5	9.3	1.4	0.0	25.6	20.3	51.1
1900-2000	Pro	2.9	57.5	34.4	0.0	0.8	1.0	0.0	1.9	0.5	1.0
	Ocp	1.1	1.5	1.7	0.0	16.3	1.4	0.0	19.2	15.4	25.5
2000-2100	Pro	1.3	54.2	39.6	0.3	0.5	1.6	0.0	1.1	0.4	1.1
	Ocp	1.0	1.5	1.5	1.0	5.5	1.7	0.0	23.5	9.3	16.4
2100-2200	Pro	3.9	45.5	45.9	0.0	0.9	0.9	0.0	0.9	0.7	1.4
	Ocp	1.1	1.8	1.6	0.0	3.5	3.0	0.0	7.5	6.7	14.2
2200-2300	Pro	2.0	51.0	43.7	0.0	0.4	0.8	0.0	0.4	0.3	1.4
	Ocp	1.2	2.0	1.6	0.0	4.0	1.0	0.0	22.0	6.7	11.6
16 hours	Pro	2.6	55.9	26.0	1.5	0.8	7.1	0.6	3.9	0.6	1.1
	Ocp	1.1	1.5	1.7	4.9	8.9	1.7	1.4	12.2	13.2	24.8

**Legend**

**Pro.** Proportion of vehicles in % (Sum may not add up to 100% due to figure rounding)

**Ocp.** Average occupancy of vehicles

**M&H** Medium and Heavy