

YEAR 2006

COVERAGE (B) STATION 2203

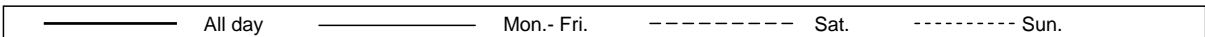
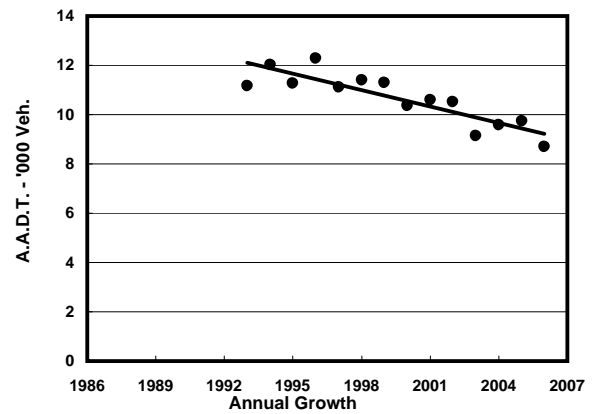
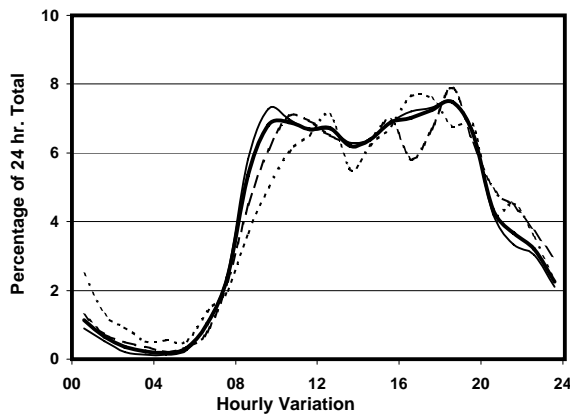
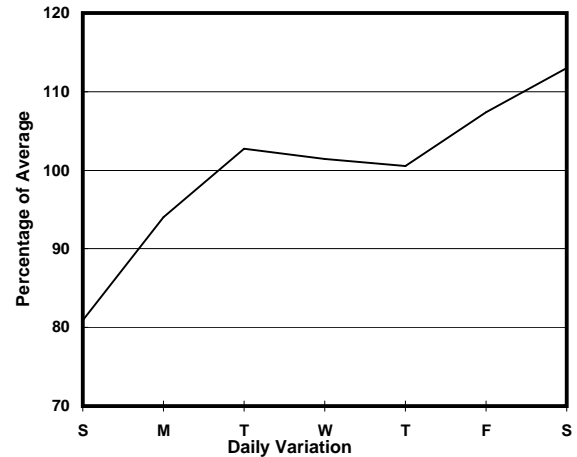
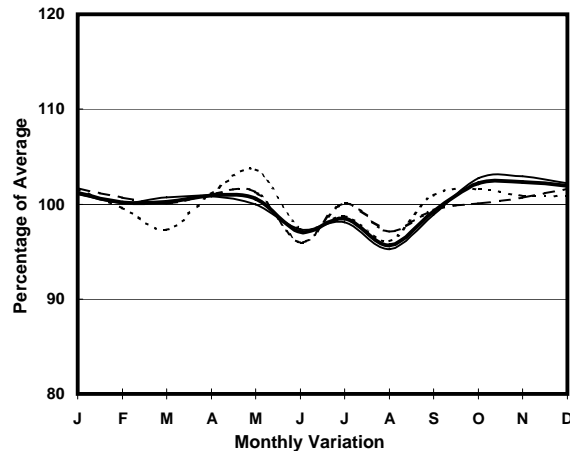
ROAD NETWORK MAJOR

ROAD TYPE DISTRICT DISTRIBUTOR

LINK STUBBS RD (from WAN CHAI GAP to WONG NAI CHUNG GAP RD)



1. TRAFFIC FLOW VARIATION AND GROWTH



2. TRAFFIC CHARACTERISTICS (BY DIRECTION)

Parameter	All - Day	Mon. - Fri.	Sat.	Sun.
SOUTH BOUND				
A.A.D.T.	4720	4830	5450	3820
R 12 / 24 - %	76	77.2	74.4	70.6
R 16 / 24 - %	93.9	94.9	92.9	89.7
AM Peak Hour	0900-1000	0900-1000	0900-1000	0900-1000
One-way flow at AM peak hour	290	320	320	170
T - % (AM)	-	9	-	-
PM Peak Hour	1800-1900	1800-1900	1800-1900	1700-1800
One-way flow at PM peak hour	370	390	410	310
T - % (PM)	-	15	-	-
Prop.of commercial vehicles - 16 hr.	-	14.7	-	-

NORTH BOUND				
A.A.D.T.	3980	4070	4480	3320
R 12 / 24 - %	76.2	77.9	72.2	71.1
R 16 / 24 - %	93.8	94.6	92.8	90.3
AM Peak Hour	0900-1000	0900-1000	0900-1000	0900-1000
One-way flow at AM peak hour	300	330	290	180
T - % (AM)	-	13	-	-
PM Peak Hour	1800-1900	1800-1900	1800-1900	1600-1700
One-way flow at PM peak hour	280	280	380	260
T - % (PM)	-	21.3	-	-
Prop.of commercial vehicles - 16 hr.	-	13.5	-	-

3. OTHER INFORMATION AND COMMENT

Coverage (B) Station 2203
Year 2006

4. Vehicle classification and occupancy - Monday to Friday

Time		Class of vehicle									
		Motor	Private	Taxi	Private	PLB	Goods veh.		Non	Fr. Bus	
		Cycle	Car		LB		Light	M & H	Fr. Bus	SD	DD
0700-0800	Pro	2.0	52.5	26.7	2.0	1.0	4.0	2.0	7.9	0.0	2.0
	Ocp	1.5	1.5	1.6	3.0	2.0	3.0	1.0	4.8	0.0	27.8
0800-0900	Pro	0.9	68.7	9.9	3.6	0.5	2.7	2.7	9.9	0.0	1.0
	Ocp	1.5	1.6	1.9	5.0	12.0	1.5	1.8	11.6	0.0	37.9
0900-1000	Pro	1.9	58.8	19.0	0.9	1.4	6.9	1.4	8.8	0.0	0.9
	Ocp	1.3	1.5	1.5	6.5	2.0	1.9	1.0	7.8	0.0	18.0
1000-1100	Pro	0.0	45.7	20.1	1.1	1.1	18.5	3.3	8.7	0.0	1.5
	Ocp	0.0	1.5	1.3	7.0	1.5	1.8	2.2	23.6	0.0	11.9
1100-1200	Pro	0.6	49.0	12.7	3.2	0.0	21.0	3.2	8.9	0.0	1.3
	Ocp	1.0	1.4	1.6	3.0	0.0	1.7	1.4	26.8	0.0	16.4
1200-1300	Pro	0.0	59.2	18.2	0.0	0.5	11.1	2.5	7.6	0.0	0.8
	Ocp	0.0	1.6	1.8	0.0	1.0	1.5	1.4	17.5	0.0	17.5
1300-1400	Pro	1.1	40.9	26.0	1.7	0.6	16.6	2.2	9.4	0.0	1.5
	Ocp	1.0	1.4	1.4	5.0	1.0	1.6	1.8	22.5	0.0	17.5
1400-1500	Pro	2.0	45.6	20.8	1.0	0.5	15.4	4.5	8.9	0.0	1.4
	Ocp	1.3	1.4	1.5	1.5	2.0	2.0	1.2	10.8	0.0	17.9
1500-1600	Pro	0.9	60.0	15.7	0.9	0.0	13.0	2.7	5.8	0.0	1.0
	Ocp	1.0	1.7	1.8	1.5	0.0	1.7	1.8	8.5	0.0	19.0
1600-1700	Pro	3.6	61.0	19.3	1.0	0.0	7.6	1.5	4.6	0.0	1.4
	Ocp	1.1	1.5	1.9	4.0	0.0	1.7	1.0	13.3	0.0	28.2
1700-1800	Pro	3.5	53.9	23.7	0.5	0.0	8.4	2.0	6.9	0.0	1.1
	Ocp	1.0	1.7	1.9	2.0	0.0	2.1	1.5	18.9	0.0	31.8
1800-1900 Peak hour	Pro	1.5	53.3	23.6	1.0	0.0	3.1	1.5	14.9	0.0	1.0
	Ocp	1.0	1.9	1.7	4.5	0.0	1.8	2.0	22.7	0.0	37.3
1900-2000	Pro	1.0	51.2	26.1	0.0	0.0	1.5	0.0	19.2	0.0	1.1
	Ocp	1.0	1.4	1.8	0.0	0.0	1.3	0.0	11.2	0.0	20.6
2000-2100	Pro	0.8	42.9	26.1	0.0	0.0	2.5	0.0	26.1	0.0	1.7
	Ocp	1.0	1.5	1.6	0.0	0.0	1.7	0.0	11.8	0.0	10.1
2100-2200	Pro	0.0	32.8	24.9	0.0	0.0	2.6	0.0	36.7	0.0	3.0
	Ocp	0.0	1.9	1.7	0.0	0.0	2.5	0.0	16.1	0.0	16.7
2200-2300	Pro	7.6	53.0	25.8	1.5	0.0	4.5	0.0	4.5	0.0	3.0
	Ocp	1.2	1.5	1.7	3.0	0.0	2.0	0.0	19.3	0.0	13.5
16 hours	Pro	1.5	53.2	20.4	1.2	0.4	9.2	2.0	10.8	0.0	1.3
	Ocp	1.1	1.6	1.7	4.1	2.7	1.8	1.6	15.3	0.0	21.3

Legend

Pro. Proportion of vehicles in % (Sum may not add up to 100% due to figure rounding)

Ocp. Average occupancy of vehicles

M&H Medium and Heavy