

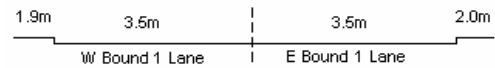
YEAR 2006

COVERAGE (B) STATION 2206

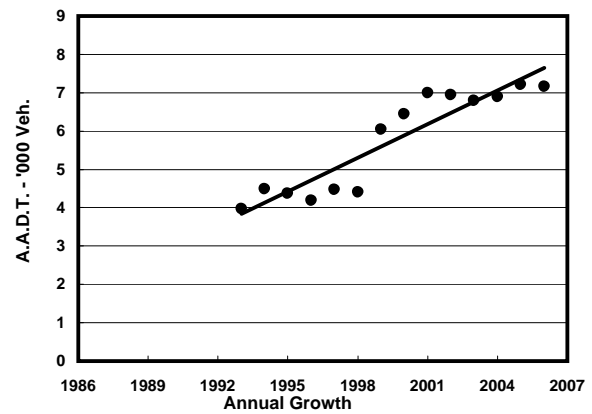
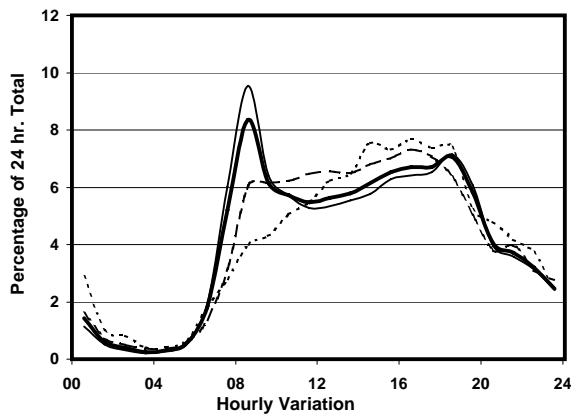
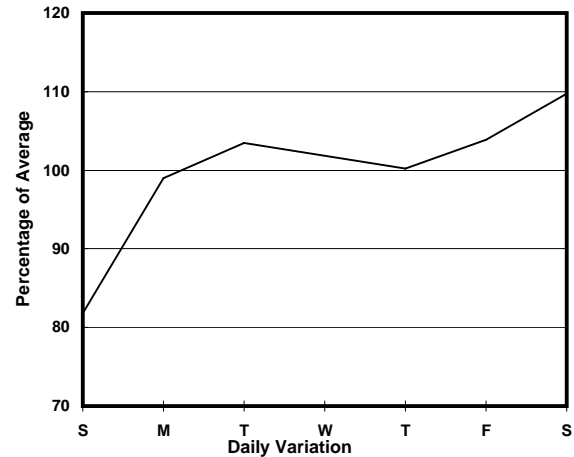
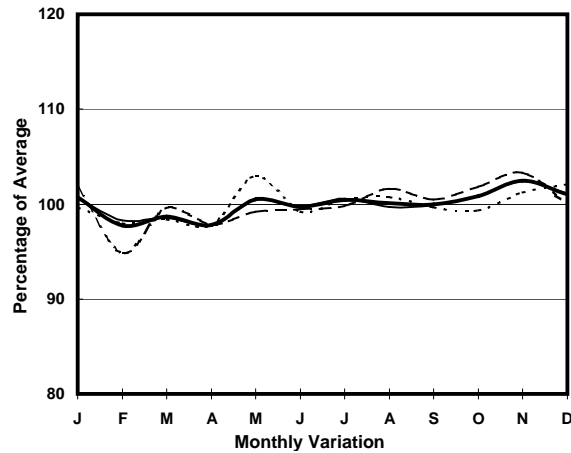
ROAD NETWORK MAJOR

ROAD TYPE DISTRICT DISTRIBUTOR

LINK BELCHER'S ST & VICTORIA RD (from SMITHFIELD RD to MOUNT DAVIS RD)



1. TRAFFIC FLOW VARIATION AND GROWTH



— All day — Mon.- Fri. - - - - Sat. - - - - - Sun.

2. TRAFFIC CHARACTERISTICS (BY DIRECTION)

Parameter	All - Day	Mon. - Fri.	Sat.	Sun.
EAST BOUND				
A.A.D.T.	3340	3470	3650	2660
R 12 / 24 - %	78.2	79.1	77.5	73.7
R 16 / 24 - %	92.7	93.3	92	90.4
AM Peak Hour	0800-0900	0800-0900	0900-1000	0900-1000
One-way flow at AM peak hour	340	420	260	130
T - % (AM)	-	13.2	-	-
PM Peak Hour	1800-1900	1700-1800	1600-1700	1800-1900
One-way flow at PM peak hour	240	240	270	230
T - % (PM)	-	9.4	-	-
Prop.of commercial vehicles - 16 hr.	-	12.7	-	-

WEST BOUND				
A.A.D.T.	3830	3900	4290	3270
R 12 / 24 - %	73	73.2	74.3	70.1
R 16 / 24 - %	91.8	92.2	91.4	89.1
AM Peak Hour	0800-0900	0800-0900	0800-0900	0800-0900
One-way flow at AM peak hour	250	290	240	140
T - % (AM)	-	23.2	-	-
PM Peak Hour	1800-1900	1800-1900	1700-1800	1600-1700
One-way flow at PM peak hour	270	290	330	270
T - % (PM)	-	11.5	-	-
Prop.of commercial vehicles - 16 hr.	-	12.6	-	-

3. OTHER INFORMATION AND COMMENT

4. Vehicle classification and occupancy - Monday to Friday

Time		Class of vehicle									
		Motor	Private	Taxi	Private	PLB	Goods veh.		Non	Fr. Bus	
		Cycle	Car		LB		Light	M & H	Fr. Bus	SD	DD
0700-0800	Pro	0.9	27.5	28.4	0.0	14.2	9.8	2.7	9.8	4.0	2.9
	Ocp	1.0	1.5	2.3	0.0	12.5	1.3	2.0	21.5	22.2	10.1
0800-0900 Peak hour	Pro	1.9	46.8	14.3	2.9	6.2	10.5	8.1	5.7	2.1	1.4
	Ocp	1.0	1.3	1.9	3.0	15.2	1.5	1.9	14.5	13.1	8.3
0900-1000	Pro	2.3	38.2	16.8	1.5	13.7	18.3	1.5	1.5	3.2	2.9
	Ocp	1.0	1.4	1.6	1.5	10.0	2.3	1.5	7.5	13.1	3.1
1000-1100	Pro	1.9	33.9	12.6	3.9	13.6	19.4	5.8	1.9	4.4	2.7
	Ocp	1.5	1.6	1.9	2.5	8.4	1.6	1.8	1.5	10.6	4.6
1100-1200	Pro	0.9	29.5	13.8	5.5	9.2	30.4	3.7	0.9	3.5	2.5
	Ocp	1.0	1.4	1.7	1.8	9.1	1.8	2.0	27.0	9.4	4.4
1200-1300	Pro	6.0	22.8	18.9	5.0	10.9	22.8	6.0	2.0	3.5	2.2
	Ocp	1.0	1.4	1.7	3.8	8.9	1.9	1.7	11.5	12.9	6.2
1300-1400	Pro	3.6	28.6	18.8	2.7	11.6	19.6	7.1	2.7	3.3	2.0
	Ocp	1.0	1.8	1.6	3.0	12.2	2.0	1.4	3.7	10.3	4.0
1400-1500	Pro	3.4	33.2	14.5	1.7	11.9	24.7	5.1	0.9	2.8	1.9
	Ocp	1.0	1.8	1.5	2.5	10.1	1.9	2.2	2.0	11.2	4.6
1500-1600	Pro	2.1	36.4	16.4	2.1	7.9	22.9	5.7	1.4	2.3	2.7
	Ocp	1.3	1.7	2.3	1.7	9.5	1.8	1.8	4.5	10.5	7.7
1600-1700	Pro	1.7	30.9	15.5	6.9	10.3	22.3	0.9	4.3	3.6	3.6
	Ocp	1.0	1.8	1.6	2.8	11.6	1.7	1.0	7.6	15.3	6.7
1700-1800	Pro	0.7	41.9	25.7	1.5	8.8	11.0	1.5	3.7	2.2	2.9
	Ocp	1.0	1.7	1.6	4.5	11.6	1.8	1.5	14.4	17.0	6.1
1800-1900	Pro	4.6	39.0	20.7	2.3	7.6	10.7	2.3	6.9	3.4	2.5
	Ocp	1.0	1.9	2.2	10.3	13.1	1.9	2.3	19.3	21.3	4.4
1900-2000	Pro	4.0	54.2	20.5	0.0	9.3	4.0	0.7	1.3	2.8	3.3
	Ocp	1.5	1.9	2.5	0.0	14.6	1.5	2.0	8.5	12.4	3.2
2000-2100	Pro	1.9	43.1	30.6	0.0	11.5	3.8	1.9	0.0	3.6	3.6
	Ocp	1.0	1.3	2.0	0.0	9.9	1.8	1.5	0.0	9.3	3.5
2100-2200	Pro	1.3	49.7	21.7	0.0	12.7	2.5	3.8	0.0	3.8	4.5
	Ocp	2.0	1.2	1.9	0.0	8.2	2.0	1.3	0.0	6.3	3.4
2200-2300	Pro	1.3	42.6	34.8	0.0	9.0	2.6	2.6	0.0	3.5	3.5
	Ocp	1.0	2.1	1.5	0.0	4.6	1.0	1.5	0.0	5.5	4.4
16 hours	Pro	2.4	38.0	19.6	2.3	10.2	14.8	3.8	3.0	3.1	2.7
	Ocp	1.1	1.6	1.9	3.2	10.8	1.8	1.8	14.1	12.9	5.3

Legend

Pro. Proportion of vehicles in % (Sum may not add up to 100% due to figure rounding)
Ocp. Average occupancy of vehicles
M&H Medium and Heavy