

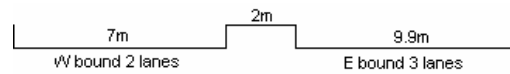
YEAR 2006

COVERAGE (B) STATION 2216

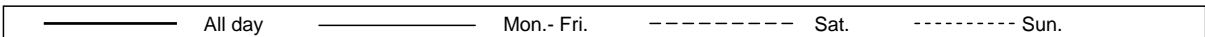
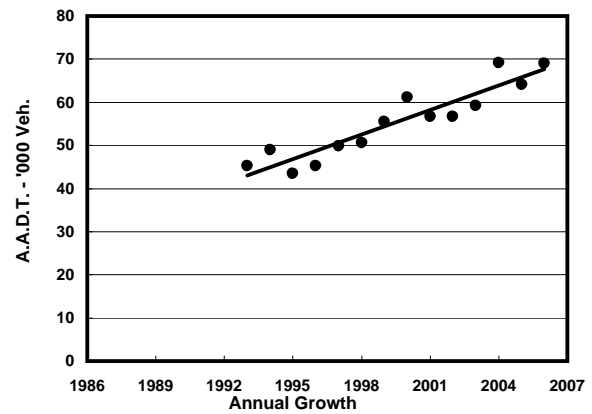
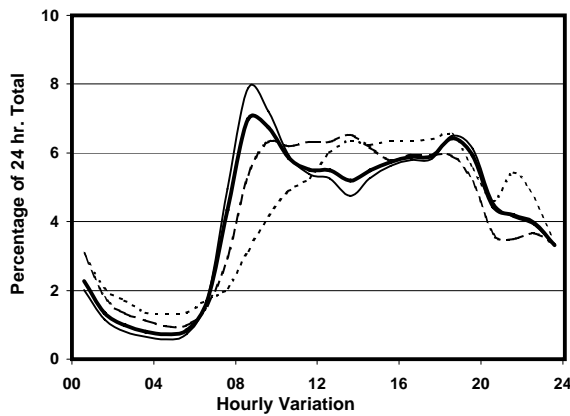
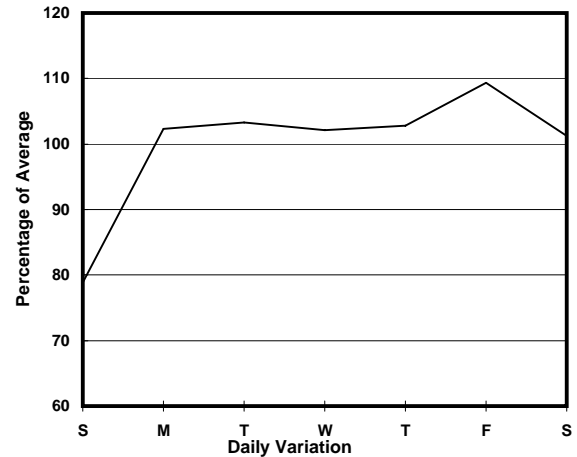
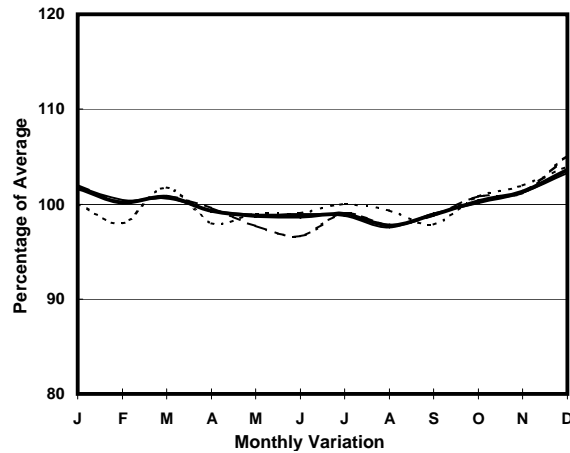
ROAD NETWORK MAJOR

ROAD TYPE PRIMARY DISTRIBUTOR

LINK CONNAUGHT RD FO <H173> (from RAMP NR GILMAN ST to THE NEAREST DIVERGING & MERGING POINTS WEST OF SHUN TAK CENTRE)



1. TRAFFIC FLOW VARIATION AND GROWTH



2. TRAFFIC CHARACTERISTICS (BY DIRECTION)

Parameter	All - Day	Mon. - Fri.	Sat.	Sun.
EAST BOUND				
A.A.D.T.	33000	34620	33920	26830
R 12 / 24 - %	72.4	73.5	71.5	66.1
R 16 / 24 - %	88.8	89.7	86.4	85.6
AM Peak Hour	0800-0900	0800-0900	0900-1000	0900-1000
One-way flow at AM peak hour	2650	3170	2440	1210
T - % (AM)	-	6.9	-	-
PM Peak Hour	1800-1900	1800-1900	1700-1800	1800-1900
One-way flow at PM peak hour	1940	2020	1930	1700
T - % (PM)	-	6.9	-	-
Prop.of commercial vehicles - 16 hr.	-	6.2	-	-

WEST BOUND				
A.A.D.T.	36000	37990	36780	28270
R 12 / 24 - %	66.9	67.5	68.3	61.6
R 16 / 24 - %	87.4	88.5	85.2	82.7
AM Peak Hour	0800-0900	0800-0900	0900-1000	0900-1000
One-way flow at AM peak hour	2170	2550	2030	1090
T - % (AM)	-	5.5	-	-
PM Peak Hour	1800-1900	1800-1900	1600-1700	1700-1800
One-way flow at PM peak hour	2490	2700	2310	1950
T - % (PM)	-	5.8	-	-
Prop.of commercial vehicles - 16 hr.	-	4.6	-	-

3. OTHER INFORMATION AND COMMENT

Coverage (B) Station 2216
Year 2006

4. Vehicle classification and occupancy - Monday to Friday

Time		Class of vehicle									
		Motor	Private	Taxi	Private	PLB	Goods veh.		Non	Fr. Bus	
		Cycle	Car		LB		Light	M & H	Fr. Bus	SD	DD
0700-0800	Pro	3.4	23.1	42.7	1.9	4.4	17.2	3.0	3.2	0.2	1.0
	Ocp	1.0	1.5	1.9	5.4	11.6	1.5	1.3	20.3	8.4	18.2
0800-0900 Peak hour	Pro	1.7	45.5	31.9	0.9	3.2	10.7	2.2	2.8	0.1	1.1
	Ocp	1.1	1.5	1.8	3.8	11.5	1.7	1.6	28.5	16.2	28.5
0900-1000	Pro	2.4	42.4	34.1	0.6	1.5	14.1	3.1	0.7	0.1	0.9
	Ocp	1.1	1.6	2.0	1.9	12.4	1.8	1.7	22.1	3.6	16.3
1000-1100	Pro	2.2	38.2	29.0	1.1	1.0	21.7	4.3	1.5	0.2	0.6
	Ocp	1.0	1.6	1.9	3.5	6.9	1.8	1.7	10.3	2.6	13.6
1100-1200	Pro	2.6	39.6	25.7	1.9	0.8	24.7	2.6	1.5	0.2	0.5
	Ocp	1.0	1.6	2.2	2.9	7.8	1.6	1.6	10.0	3.3	20.1
1200-1300	Pro	2.1	38.9	26.5	1.7	0.8	22.8	4.9	1.6	0.2	0.4
	Ocp	1.1	1.6	2.3	3.1	6.8	1.7	1.6	15.7	5.1	16.4
1300-1400	Pro	2.4	36.4	25.8	1.8	1.1	25.2	4.1	2.4	0.3	0.6
	Ocp	1.1	1.5	2.2	3.9	8.7	1.7	1.6	10.8	4.2	16.5
1400-1500	Pro	3.2	45.1	21.6	1.8	2.0	21.7	2.4	1.5	0.1	0.6
	Ocp	1.0	1.8	2.1	3.9	7.9	1.7	1.7	15.1	4.8	15.4
1500-1600	Pro	2.7	44.3	23.3	2.4	1.6	19.9	3.5	1.3	0.2	0.7
	Ocp	1.1	1.5	2.3	2.9	10.1	1.7	1.5	20.2	7.6	16.1
1600-1700	Pro	2.7	36.6	30.4	1.2	1.5	21.6	2.6	2.2	0.2	1.0
	Ocp	1.0	1.5	1.9	2.4	7.1	1.8	1.6	10.9	7.9	9.3
1700-1800	Pro	3.0	48.6	24.2	1.3	1.9	16.3	1.2	1.9	0.2	1.3
	Ocp	1.1	1.6	2.1	4.0	10.9	1.8	1.3	36.3	13.3	16.3
1800-1900	Pro	3.1	51.1	28.2	0.4	2.2	8.8	1.2	3.7	0.2	1.2
	Ocp	1.1	1.5	2.3	2.5	12.6	1.9	1.4	32.8	9.6	26.3
1900-2000	Pro	2.0	58.4	26.6	0.4	2.5	5.7	1.1	2.0	0.1	1.2
	Ocp	1.2	1.6	2.2	2.8	12.7	1.7	1.5	26.9	11.4	25.9
2000-2100	Pro	3.2	51.1	35.7	0.4	3.1	3.4	1.0	0.6	0.2	1.4
	Ocp	1.2	1.5	2.1	4.0	13.8	1.5	1.1	27.8	3.2	9.1
2100-2200	Pro	2.6	37.9	49.1	0.2	3.6	3.5	1.2	1.0	0.2	0.8
	Ocp	1.3	1.6	2.5	2.0	11.0	2.0	1.9	16.3	2.2	13.6
2200-2300	Pro	2.6	50.5	37.7	0.0	3.3	3.5	1.2	0.7	0.1	0.5
	Ocp	1.1	1.7	2.2	0.0	10.7	1.8	1.4	28.2	3.5	15.0
16 hours	Pro	2.6	43.6	30.2	1.1	2.1	15.1	2.5	1.8	0.2	0.9
	Ocp	1.1	1.6	2.1	3.4	10.9	1.7	1.6	22.2	7.2	18.7

Legend

Pro. Proportion of vehicles in % (Sum may not add up to 100% due to figure rounding)
Ocp. Average occupancy of vehicles
M&H Medium and Heavy