

YEAR 2006

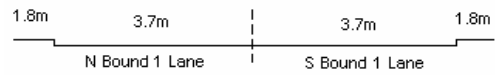
LINK

COVER AGE (B) STATION 2401

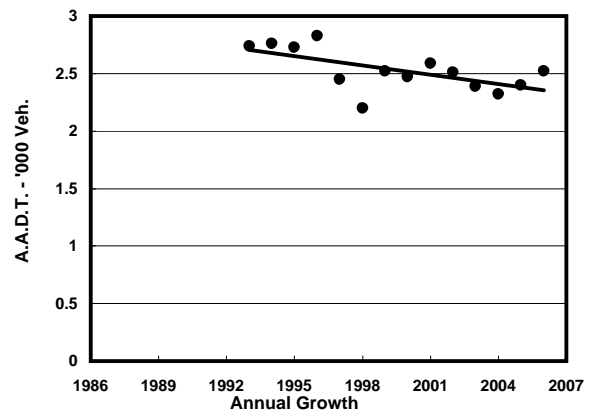
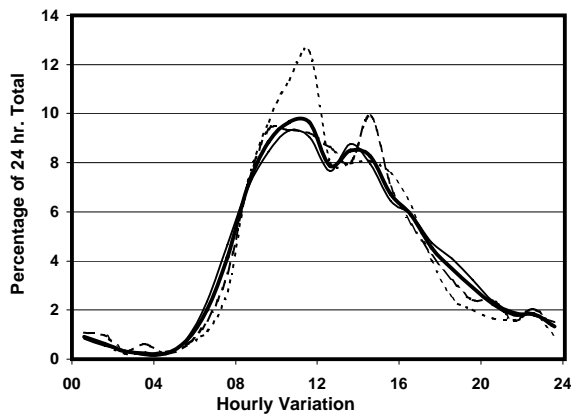
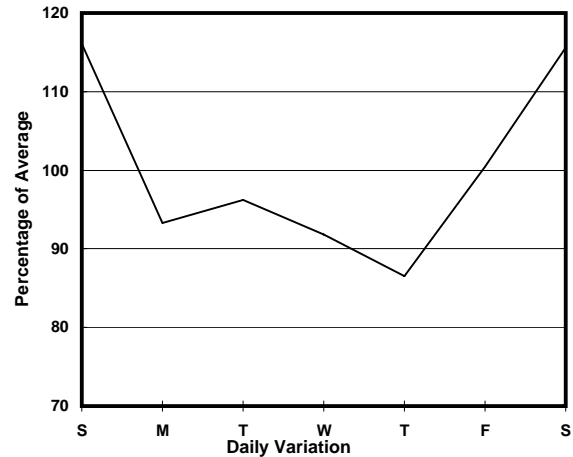
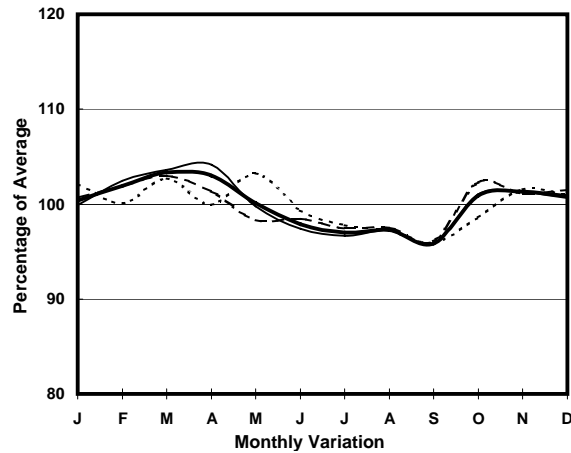
ROAD NETWORK MINOR

ROAD TYPE LOCAL DISTRIBUTOR

LIN SHING RD (from WAN TSUI RD to CAPE COLLISION RD)



## 1. TRAFFIC FLOW VARIATION AND GROWTH



— All day — Mon.- Fri. - - - - - Sat. - - - - - Sun.

## 2. TRAFFIC CHARACTERISTICS (BY DIRECTION)

Parameter	All - Day	Mon. - Fri.	Sat.	Sun.
<b>SOUTH BOUND</b>				
A.A.D.T.	1960	1840	2260	2150
R 12 / 24 - %	83.1	82.5	82.9	86
R 16 / 24 - %	92.6	92.3	92.3	94.2
AM Peak Hour	0900-1000	0900-1000	0900-1000	0900-1000
One-way flow at AM peak hour	180	160	230	240
T - % (AM)	-	12.5	-	-
PM Peak Hour	1600-1700	1600-1700	1600-1700	1600-1700
One-way flow at PM peak hour	110	100	110	120
T - % (PM)	-	14.3	-	-
Prop.of commercial vehicles - 16 hr.	-	10.2	-	-
<b>NORTH BOUND</b>				
A.A.D.T.	560	500	630	760
R 12 / 24 - %	90.6	89.6	92.4	93.1
R 16 / 24 - %	97	96.9	97.4	97.4
AM Peak Hour	0900-1000	0900-1000	0800-0900	0800-0900
One-way flow at AM peak hour	40	40	50	50
T - % (AM)	-	-	-	-
PM Peak Hour	1600-1700	1600-1700	1600-1700	1600-1700
One-way flow at PM peak hour	40	40	50	60
T - % (PM)	-	-	-	-
Prop.of commercial vehicles - 16 hr.	-	3.5	-	-

## 3. OTHER INFORMATION AND COMMENT

**Coverage (B) Station 2401**  
**Year 2006**

**4. Vehicle classification and occupancy - Monday to Friday**

Time		Class of vehicle									
		Motor	Private	Taxi	Private	PLB	Goods veh.		Non	Fr. Bus	
		Cycle	Car		LB		Light	M & H	Fr. Bus	SD	DD
0700-0800	Pro	4.8	4.8	9.5	9.5	19.0	38.1	0.0	14.3	0.0	0.0
	Ocp	1.0	1.0	1.5	8.0	17.0	2.6	0.0	8.7	0.0	0.0
0800-0900	Pro	7.9	39.5	10.5	5.3	10.5	15.8	2.6	7.9	0.0	0.0
	Ocp	1.0	1.8	1.5	4.0	17.0	1.5	1.0	1.7	0.0	0.0
0900-1000	Pro	7.9	31.6	10.5	7.9	5.3	26.3	0.0	10.5	0.0	0.0
	Ocp	1.0	1.5	1.8	4.3	15.5	2.3	0.0	8.5	0.0	0.0
1000-1100 Peak hour	Pro	2.6	25.6	25.6	7.7	10.3	20.5	5.1	2.6	0.0	0.0
	Ocp	1.0	1.4	2.2	2.7	7.5	1.6	2.5	1.0	0.0	0.0
1100-1200	Pro	4.5	22.7	9.1	11.4	6.8	34.1	0.0	11.4	0.0	0.0
	Ocp	1.0	2.1	1.8	2.4	6.7	1.8	0.0	9.8	0.0	0.0
1200-1300	Pro	0.0	31.1	15.6	0.0	4.4	31.1	13.3	4.4	0.0	0.0
	Ocp	0.0	2.1	1.4	0.0	7.0	2.1	1.7	4.5	0.0	0.0
1300-1400	Pro	3.4	31.0	31.0	3.4	6.9	17.2	3.4	3.4	0.0	0.0
	Ocp	1.0	1.9	1.4	6.0	6.0	1.4	1.0	1.0	0.0	0.0
1400-1500	Pro	0.0	37.5	22.5	10.0	5.0	17.5	5.0	2.5	0.0	0.0
	Ocp	0.0	1.7	2.0	4.3	9.0	1.3	1.5	7.0	0.0	0.0
1500-1600	Pro	0.0	42.9	14.3	0.0	14.3	23.8	0.0	4.8	0.0	0.0
	Ocp	0.0	1.4	1.7	0.0	6.7	2.0	0.0	4.0	0.0	0.0
1600-1700	Pro	4.5	18.2	18.2	9.1	13.6	22.7	0.0	13.6	0.0	0.0
	Ocp	1.0	1.5	1.0	3.5	9.0	1.6	0.0	8.0	0.0	0.0
1700-1800	Pro	0.0	44.4	14.8	3.7	14.8	18.5	0.0	3.7	0.0	0.0
	Ocp	0.0	1.8	1.3	1.0	9.0	2.8	0.0	11.0	0.0	0.0
1800-1900	Pro	3.6	46.4	17.9	3.6	10.7	10.7	0.0	7.1	0.0	0.0
	Ocp	1.0	1.5	1.6	2.0	12.3	1.7	0.0	4.0	0.0	0.0
1900-2000	Pro	5.9	47.1	5.9	0.0	11.8	29.4	0.0	0.0	0.0	0.0
	Ocp	1.0	1.4	3.0	0.0	15.0	1.4	0.0	0.0	0.0	0.0
2000-2100	Pro	0.0	70.0	0.0	5.0	10.0	15.0	0.0	0.0	0.0	0.0
	Ocp	0.0	2.1	0.0	2.0	3.5	1.0	0.0	0.0	0.0	0.0
2100-2200	Pro	0.0	60.0	0.0	0.0	20.0	10.0	10.0	0.0	0.0	0.0
	Ocp	0.0	1.8	0.0	0.0	5.0	1.0	1.0	0.0	0.0	0.0
2200-2300	Pro	0.0	38.9	33.3	0.0	16.7	5.6	5.6	0.0	0.0	0.0
	Ocp	0.0	1.7	1.3	0.0	5.3	1.0	1.0	0.0	0.0	0.0
16 hours	Pro	3.1	34.8	15.8	5.5	9.8	22.1	3.1	5.9	0.0	0.0
	Ocp	1.0	1.7	1.7	3.7	9.9	1.9	1.6	6.6	0.0	0.0

**Legend**

- Pro.** Proportion of vehicles in % (Sum may not add up to 100% due to figure rounding)
- Ocp.** Average occupancy of vehicles
- M&H** Medium and Heavy