

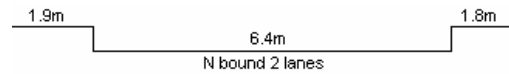
YEAR 2006

COVERAGE (B) STATION 2403

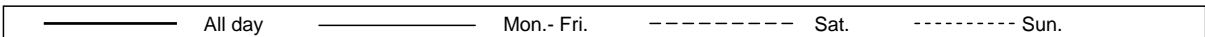
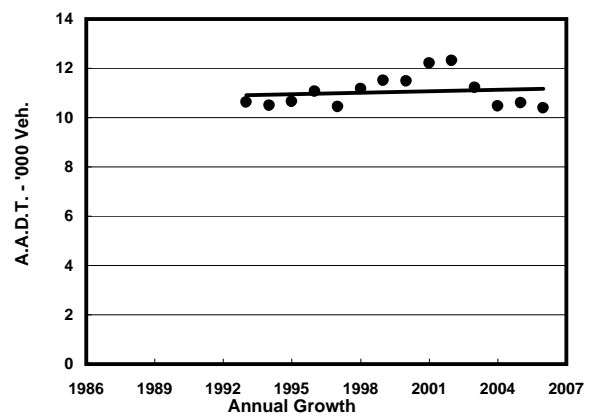
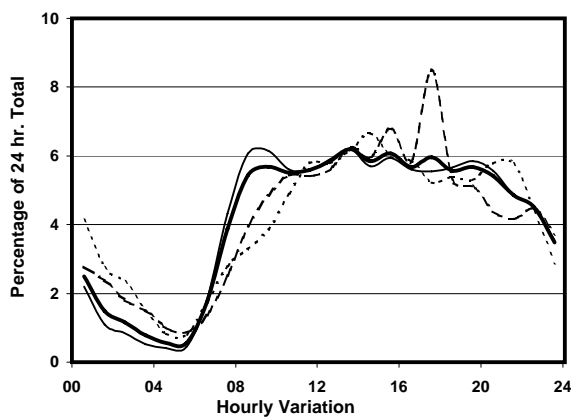
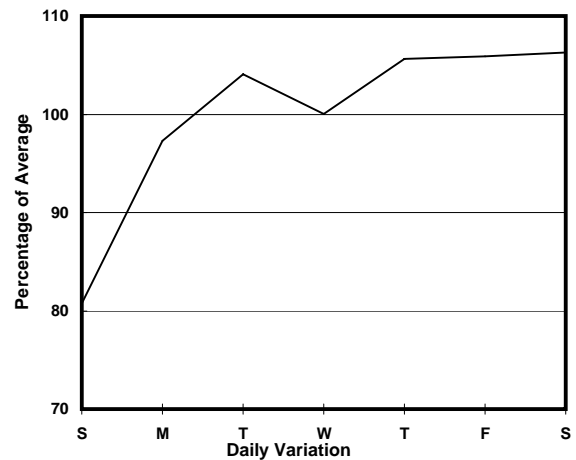
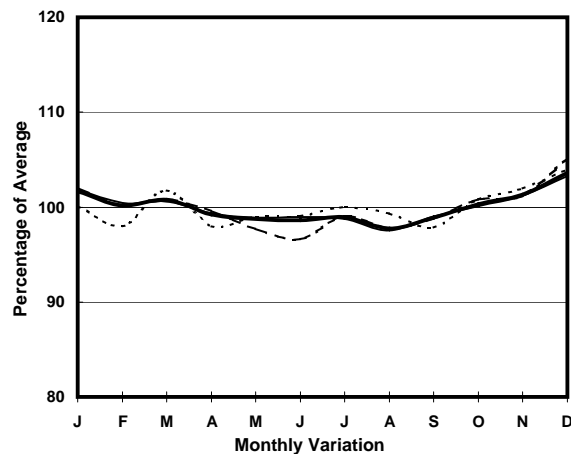
ROAD NETWORK MINOR

ROAD TYPE LOCAL DISTRIBUTOR

LINK ICE HOUSE ST (from CONNAUGHT RD C to LOWER ALBERT RD)



1. TRAFFIC FLOW VARIATION AND GROWTH



2. TRAFFIC CHARACTERISTICS (BY DIRECTION)

Parameter	All - Day	Mon. - Fri.	Sat.	Sun.
NORTH BOUND				
A.A.D.T.	10380	10780	11160	8470
R 12 / 24 - %	67.3	68.3	66.4	61.8
R 16 / 24 - %	87.7	89.1	84.6	83
AM Peak Hour	0900-1000	0900-1000	0900-1000	0900-1000
One-way flow at AM peak hour	590	660	540	330
T - % (AM)	-	9.7	-	-
PM Peak Hour	1700-1800	1800-1900	1700-1800	1600-1700
One-way flow at PM peak hour	620	610	950	500
T - % (PM)	-	8.8	-	-
Prop.of commercial vehicles - 16 hr.	-	7.7	-	-

A.A.D.T.	-	-	-	-
R 12 / 24 - %	-	-	-	-
R 16 / 24 - %	-	-	-	-
AM Peak Hour	-	-	-	-
One-way flow at AM peak hour	-	-	-	-
T - % (AM)	-	-	-	-
PM Peak Hour	-	-	-	-
One-way flow at PM peak hour	-	-	-	-
T - % (PM)	-	-	-	-
Prop.of commercial vehicles - 16 hr.	-	-	-	-

3. OTHER INFORMATION AND COMMENT

Coverage (B) Station 2403
Year 2006

4. Vehicle classification and occupancy - Monday to Friday

Time		Class of vehicle									
		Motor	Private	Taxi	Private	PLB	Goods veh.		Non	Fr. Bus	
		Cycle	Car		LB		Light	M & H	Fr. Bus	SD	DD
0700-0800	Pro	0.0	8.2	61.2	0.9	14.6	3.7	1.8	7.3	0.0	2.3
	Ocp	0.0	2.2	2.0	1.0	9.3	1.5	1.0	5.0	0.0	17.7
0800-0900	Pro	0.0	22.2	49.7	0.0	10.1	5.3	0.5	10.6	0.0	1.6
	Ocp	0.0	1.8	2.1	0.0	10.9	1.4	1.0	10.5	0.0	26.3
0900-1000	Pro	1.1	24.2	48.9	2.1	7.0	7.0	0.5	7.5	0.0	1.7
	Ocp	1.5	1.8	1.9	2.5	8.8	1.7	1.0	8.4	0.0	13.3
1000-1100	Pro	1.2	22.9	51.9	0.0	9.7	7.8	0.0	4.8	0.0	1.7
	Ocp	1.0	1.6	1.8	0.0	7.1	2.1	0.0	6.1	0.0	10.5
1100-1200	Pro	0.6	17.3	50.6	2.6	9.6	11.5	0.6	5.8	0.0	1.4
	Ocp	1.0	1.4	1.5	6.0	8.0	1.9	3.0	10.7	0.0	10.0
1200-1300	Pro	3.0	20.7	54.9	0.5	8.1	8.1	0.5	3.0	0.0	1.3
	Ocp	1.0	1.6	1.5	10.0	10.5	1.5	2.0	5.7	0.0	10.4
1300-1400 Peak hour	Pro	0.6	16.9	63.6	0.6	7.6	5.2	0.6	3.5	0.0	1.5
	Ocp	1.0	1.4	1.6	9.0	6.1	2.1	2.0	6.7	0.0	9.1
1400-1500	Pro	0.0	25.0	47.4	0.7	10.5	7.2	2.6	5.3	0.0	1.3
	Ocp	0.0	1.5	1.8	7.0	10.3	1.6	1.8	6.3	0.0	14.8
1500-1600	Pro	0.0	22.5	52.8	1.4	12.7	4.2	0.0	4.2	0.0	2.1
	Ocp	0.0	1.6	1.5	6.0	8.4	1.5	0.0	4.8	0.0	13.2
1600-1700	Pro	0.6	29.7	42.7	0.0	12.4	6.2	0.6	6.2	0.0	1.7
	Ocp	1.0	1.4	1.5	0.0	11.5	1.9	1.0	6.9	0.0	11.7
1700-1800	Pro	0.6	29.5	45.6	0.6	10.9	1.9	1.9	7.1	0.0	1.8
	Ocp	1.0	1.8	1.5	1.0	11.5	1.3	2.0	6.0	0.0	17.9
1800-1900	Pro	0.6	29.2	46.8	1.2	12.8	0.6	0.0	7.3	0.0	1.5
	Ocp	1.0	1.2	1.5	2.5	10.0	3.0	0.0	6.2	0.0	15.5
1900-2000	Pro	2.8	28.8	46.9	1.1	9.6	2.3	0.0	7.3	0.0	1.1
	Ocp	1.0	1.3	1.2	6.5	8.9	1.8	0.0	4.4	0.0	11.6
2000-2100	Pro	0.8	24.7	60.1	0.8	6.2	0.8	1.5	3.1	0.0	2.1
	Ocp	1.0	1.4	1.3	1.0	6.4	3.0	2.5	5.3	0.0	6.4
2100-2200	Pro	0.7	16.2	69.2	0.0	10.3	1.5	0.0	0.7	0.0	1.3
	Ocp	1.0	1.6	1.3	0.0	8.2	2.5	0.0	2.0	0.0	6.1
2200-2300	Pro	0.0	18.1	67.7	0.0	11.7	0.9	0.0	0.0	0.0	1.6
	Ocp	0.0	2.2	1.4	0.0	5.3	1.0	0.0	0.0	0.0	4.7
16 hours	Pro	0.9	22.7	53.0	0.8	10.1	4.9	0.7	5.4	0.0	1.6
	Ocp	1.0	1.6	1.6	4.7	9.1	1.8	1.8	7.0	0.0	12.9

Legend

Pro. Proportion of vehicles in % (Sum may not add up to 100% due to figure rounding)
Ocp. Average occupancy of vehicles
M&H Medium and Heavy