

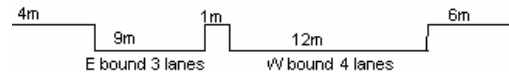
YEAR 2006

COVERAGE (B) STATION 4204

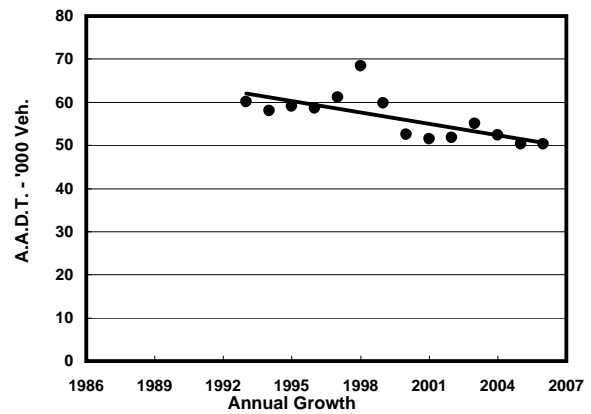
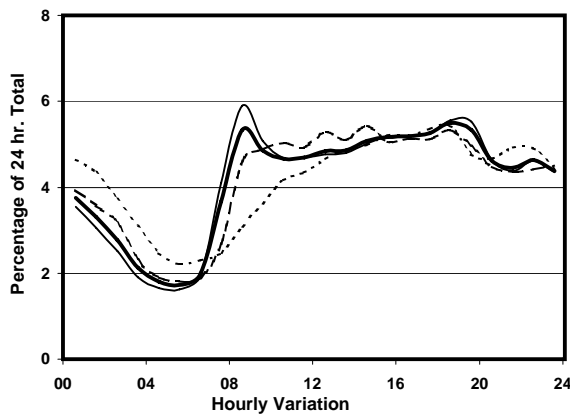
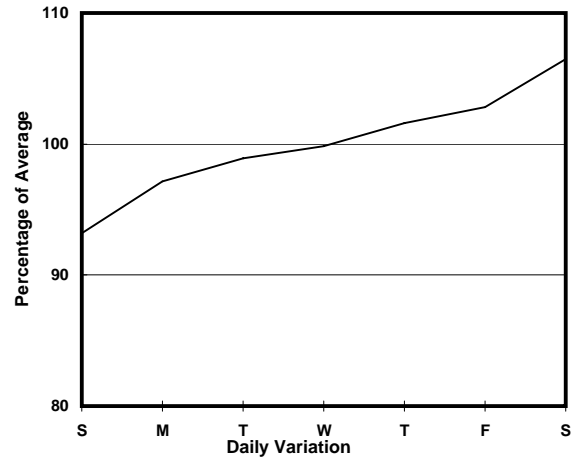
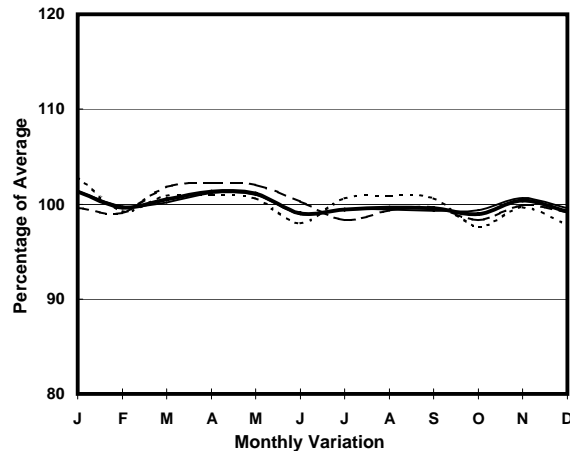
ROAD NETWORK MAJOR

ROAD TYPE PRIMARY DISTRIBUTOR

LINK ARGYLE ST & FO <K13> (from WATERLOO RD to YIM PO FONG ST)



1. TRAFFIC FLOW VARIATION AND GROWTH



— All day - - - - - Mon.- Fri. - - - - - Sat. Sun.

2. TRAFFIC CHARACTERISTICS (BY DIRECTION)

Parameter	All - Day	Mon. - Fri.	Sat.	Sun.
EAST BOUND				
A.A.D.T.	26680	26820	28250	25160
R 12 / 24 - %	57.2	58.4	57	51.4
R 16 / 24 - %	76.1	77.5	74.7	70.3
AM Peak Hour	0800-0900	0800-0900	0900-1000	0900-1000
One-way flow at AM peak hour	1360	1500	1320	850
T - % (AM)	-	12.1	-	-
PM Peak Hour	1800-1900	1800-1900	1800-1900	1800-1900
One-way flow at PM peak hour	1480	1510	1510	1350
T - % (PM)	-	7.3	-	-
Prop.of commercial vehicles - 16 hr.	-	9.2	-	-
WEST BOUND				
A.A.D.T.	23580	23670	25490	21890
R 12 / 24 - %	61.2	62.4	60.4	55.8
R 16 / 24 - %	80.4	81.6	79.3	75.5
AM Peak Hour	0800-0900	0800-0900	0900-1000	0900-1000
One-way flow at AM peak hour	1320	1480	1310	850
T - % (AM)	-	10	-	-
PM Peak Hour	1800-1900	1800-1900	1800-1900	1700-1800
One-way flow at PM peak hour	1290	1300	1360	1230
T - % (PM)	-	6.6	-	-
Prop.of commercial vehicles - 16 hr.	-	8.4	-	-

3. OTHER INFORMATION AND COMMENT

Coverage (B) Station 4204
Year 2006

4. Vehicle classification and occupancy - Monday to Friday

Time		Class of vehicle									
		Motor	Private	Taxi	Private	PLB	Goods veh.		Non	Fr. Bus	
		Cycle	Car		LB		Light	M & H	Fr. Bus	SD	DD
0700-0800	Pro	2.3	11.8	35.6	2.1	16.4	17.3	1.8	3.5	0.0	9.2
	Ocp	1.1	1.5	2.2	8.3	8.8	1.4	1.8	12.5	0.0	36.3
0800-0900 Peak hour	Pro	2.8	32.4	29.6	1.6	12.5	10.0	1.6	4.1	0.0	5.6
	Ocp	1.1	1.6	2.0	3.7	9.6	1.7	1.8	17.9	0.0	36.8
0900-1000	Pro	2.2	26.0	31.6	1.0	14.9	14.5	1.5	0.8	0.0	7.5
	Ocp	1.2	1.4	1.9	1.5	8.5	1.6	1.3	3.8	0.0	25.2
1000-1100	Pro	2.5	21.7	34.0	1.5	11.0	19.7	2.6	0.8	0.0	6.3
	Ocp	1.0	1.4	1.9	3.7	6.4	1.6	1.3	4.8	0.0	23.4
1100-1200	Pro	4.5	22.9	30.6	0.5	11.1	22.2	1.3	0.9	0.0	5.9
	Ocp	1.1	1.3	1.9	1.3	7.1	1.5	1.6	2.6	0.0	27.7
1200-1300	Pro	2.5	23.5	31.3	0.8	13.7	18.9	1.3	2.3	0.0	5.5
	Ocp	1.1	1.4	1.6	2.8	8.3	1.5	1.6	10.9	0.0	29.6
1300-1400	Pro	2.3	21.9	32.9	1.7	11.6	19.3	2.3	1.7	0.0	6.3
	Ocp	1.0	1.3	2.2	2.6	9.1	1.5	1.4	1.2	0.0	29.0
1400-1500	Pro	5.1	23.6	32.0	1.8	9.7	18.7	2.0	1.3	0.0	5.9
	Ocp	1.2	1.3	2.0	2.5	9.5	1.6	1.3	4.5	0.0	30.5
1500-1600	Pro	3.8	29.6	27.8	1.0	11.0	19.6	0.8	0.7	0.0	5.8
	Ocp	1.0	1.3	2.0	2.0	11.2	1.5	1.2	16.3	0.0	34.5
1600-1700	Pro	3.4	28.6	29.6	0.7	11.9	16.4	1.5	2.1	0.0	6.0
	Ocp	1.1	1.4	1.9	1.3	11.3	1.5	1.4	3.8	0.0	40.7
1700-1800	Pro	4.3	32.3	25.2	0.2	14.8	14.0	1.2	1.0	0.0	7.0
	Ocp	1.1	1.4	2.0	5.0	13.9	1.7	1.4	20.7	0.0	39.6
1800-1900	Pro	7.1	36.2	28.3	0.1	12.4	8.9	0.7	0.6	0.0	5.7
	Ocp	1.2	1.4	2.1	12.0	15.5	1.6	1.2	23.0	0.0	49.1
1900-2000	Pro	4.3	38.6	21.6	0.0	17.8	10.3	0.5	0.3	0.0	6.6
	Ocp	1.1	1.3	2.2	0.0	14.4	1.8	1.3	13.0	0.0	40.6
2000-2100	Pro	3.3	32.6	33.5	0.3	17.4	6.9	0.6	0.0	0.0	5.4
	Ocp	1.1	1.6	1.9	2.5	12.9	1.4	1.5	0.0	0.0	29.4
2100-2200	Pro	3.1	33.8	36.3	0.8	14.5	4.6	0.0	0.4	0.0	6.7
	Ocp	1.4	1.4	1.8	1.0	13.0	1.6	0.0	1.0	0.0	31.0
2200-2300	Pro	3.6	30.7	35.4	0.2	18.7	4.4	0.0	0.2	0.0	6.9
	Ocp	1.3	1.6	2.0	4.0	13.3	2.0	0.0	8.0	0.0	30.1
16 hours	Pro	3.6	28.3	30.8	0.9	13.6	14.0	1.2	1.3	0.0	6.3
	Ocp	1.1	1.4	2.0	3.3	11.1	1.6	1.5	10.9	0.0	33.5

Legend

- Pro.** Proportion of vehicles in % (Sum may not add up to 100% due to figure rounding)
- Ocp.** Average occupancy of vehicles
- M&H** Medium and Heavy