

YEAR 2006

LINK

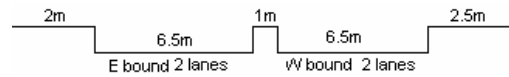
CORNWALL ST (from WATERLOO RD to NAM CHEONG ST)

COVERAGE (B) STATION 4206

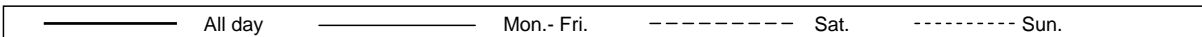
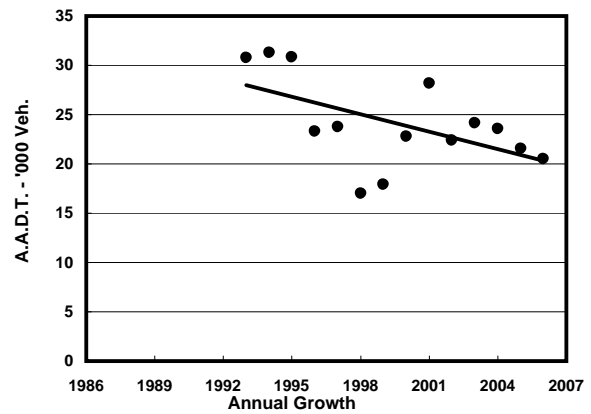
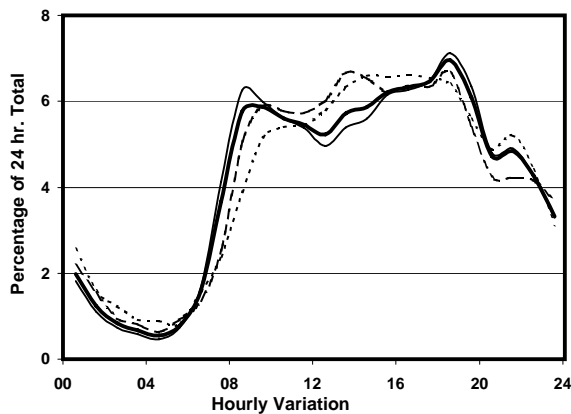
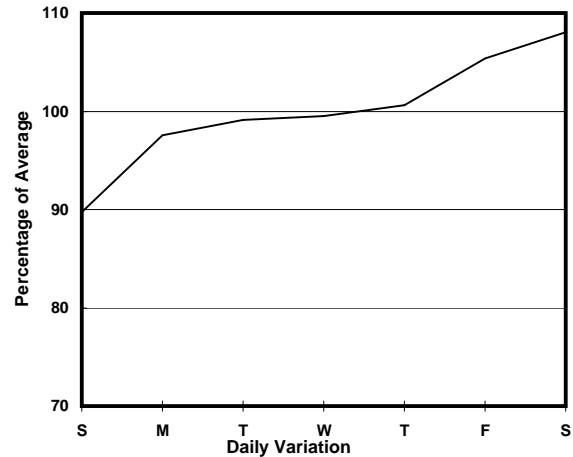
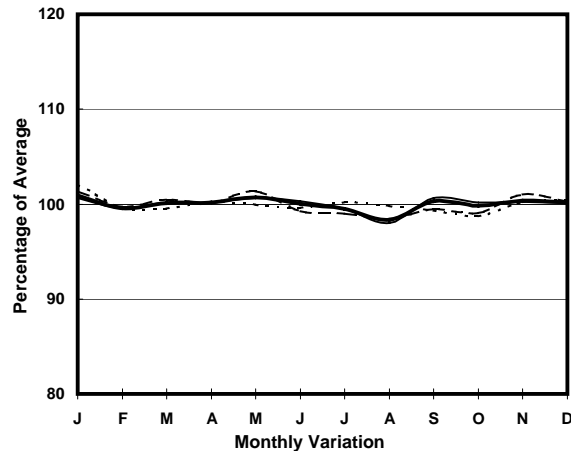
ROAD NETWORK MAJOR

ROAD TYPE DISTRICT DISTRIBUTOR

CORNWALL ST (from WATERLOO RD to NAM CHEONG ST)



### 1. TRAFFIC FLOW VARIATION AND GROWTH



### 2. TRAFFIC CHARACTERISTICS (BY DIRECTION)

Parameter	All - Day	Mon. - Fri.	Sat.	Sun.
<b>EAST BOUND</b>				
A.A.D.T.	9810	9820	10830	9140
R 12 / 24 - %	69.3	69.4	69.6	68.1
R 16 / 24 - %	88.3	88.9	87	86.8
AM Peak Hour	0900-1000	0800-0900	0900-1000	0900-1000
One-way flow at AM peak hour	600	630	670	530
T - % (AM)	-	17.5	-	-
PM Peak Hour	1800-1900	1800-1900	1800-1900	1600-1700
One-way flow at PM peak hour	700	740	700	580
T - % (PM)	-	9	-	-
Prop.of commercial vehicles - 16 hr.	-	12.2	-	-
<b>WEST BOUND</b>				
A.A.D.T.	10680	10890	11430	9380
R 12 / 24 - %	69	69.3	70.1	66.3
R 16 / 24 - %	89.8	90.3	88.8	87.8
AM Peak Hour	0900-1000	0800-0900	0900-1000	0900-1000
One-way flow at AM peak hour	600	670	640	430
T - % (AM)	-	12	-	-
PM Peak Hour	1800-1900	1800-1900	1600-1700	1700-1800
One-way flow at PM peak hour	720	740	800	660
T - % (PM)	-	9	-	-
Prop.of commercial vehicles - 16 hr.	-	11.2	-	-

### 3. OTHER INFORMATION AND COMMENT

**Coverage (B) Station 4206**  
**Year 2006**

**4. Vehicle classification and occupancy - Monday to Friday**

Time		Class of vehicle									
		Motor	Private	Taxi	Private	PLB	Goods veh.		Non	Fr. Bus	
		Cycle	Car		LB		Light	M & H	Fr. Bus	SD	DD
0700-0800	Pro	4.6	32.7	23.1	4.2	0.0	7.1	2.5	21.4	0.3	4.1
	Ocp	1.1	1.9	1.9	6.8	0.0	1.6	1.5	12.8	3.0	44.0
0800-0900	Pro	4.2	55.6	17.7	1.5	0.0	6.0	1.7	10.5	0.1	2.6
	Ocp	1.1	1.5	2.0	7.0	0.0	1.5	1.7	14.0	4.0	45.4
0900-1000	Pro	3.7	48.1	20.1	1.5	0.0	15.1	3.4	4.6	0.1	3.3
	Ocp	1.0	1.5	2.0	1.6	0.0	1.9	2.1	6.8	1.0	30.2
1000-1100	Pro	1.3	47.0	17.8	1.6	0.3	21.1	3.2	4.5	0.0	3.0
	Ocp	1.0	1.5	1.6	2.8	1.0	1.7	1.3	10.0	0.0	29.9
1100-1200	Pro	1.2	39.0	24.5	2.1	0.4	21.6	2.5	5.8	0.0	2.9
	Ocp	1.0	1.3	2.0	2.6	1.0	1.6	1.5	3.3	0.0	29.6
1200-1300	Pro	3.5	43.7	21.7	2.1	0.0	14.3	1.4	10.5	0.0	2.8
	Ocp	1.0	1.6	1.8	8.7	0.0	1.5	1.8	15.9	0.0	27.4
1300-1400	Pro	2.9	39.7	20.0	2.9	0.0	16.5	2.6	12.6	0.0	2.7
	Ocp	1.1	1.5	1.8	3.0	0.0	1.5	1.8	9.4	0.0	30.2
1400-1500	Pro	4.3	44.3	17.7	1.8	0.0	22.0	2.8	4.6	0.0	2.6
	Ocp	1.0	1.6	1.8	2.4	0.0	1.7	1.5	7.3	0.0	31.1
1500-1600	Pro	2.9	41.7	16.9	3.6	0.0	24.1	1.3	6.8	0.0	2.6
	Ocp	1.1	1.5	1.9	4.5	0.0	1.7	2.0	15.6	0.0	34.7
1600-1700	Pro	3.0	45.2	28.0	2.4	0.0	10.2	1.8	6.6	0.0	2.6
	Ocp	1.0	1.5	1.6	3.6	0.0	1.5	1.3	7.1	0.0	36.6
1700-1800	Pro	2.7	48.4	19.8	2.4	0.0	16.8	0.9	6.1	0.0	2.8
	Ocp	1.2	1.5	1.8	4.5	0.0	2.0	1.7	7.5	0.0	47.5
1800-1900 Peak hour	Pro	4.9	53.6	19.9	1.7	0.0	11.0	0.9	5.2	0.0	2.9
	Ocp	1.1	1.5	1.9	3.7	0.0	1.6	2.0	8.0	0.0	52.3
1900-2000	Pro	3.8	62.8	19.7	0.0	0.3	7.0	0.6	3.2	0.0	2.6
	Ocp	1.0	1.6	2.0	0.0	1.0	2.0	2.0	16.2	0.0	54.2
2000-2100	Pro	5.3	53.0	26.9	1.6	0.4	6.1	0.8	2.0	0.0	3.9
	Ocp	1.2	1.7	1.9	1.0	1.0	1.7	1.0	6.4	0.0	39.4
2100-2200	Pro	4.7	52.7	31.3	0.0	0.5	4.3	0.9	1.9	0.0	3.7
	Ocp	1.2	1.6	1.8	0.0	17.0	1.3	1.0	6.3	0.0	31.2
2200-2300	Pro	2.5	59.5	27.0	1.5	0.0	3.4	0.5	1.5	0.1	4.1
	Ocp	1.2	1.8	2.1	4.0	0.0	1.3	1.0	14.3	1.0	26.8
16 hours	Pro	3.5	48.1	21.5	1.9	0.1	13.1	1.8	6.9	0.1	3.0
	Ocp	1.1	1.6	1.9	4.3	4.2	1.7	1.6	10.9	2.5	37.4

**Legend**

**Pro.** Proportion of vehicles in % (Sum may not add up to 100% due to figure rounding)  
**Ocp.** Average occupancy of vehicles  
**M&H** Medium and Heavy