

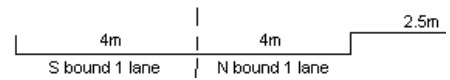
YEAR 2006

COVERAGE (B) STATION 4207

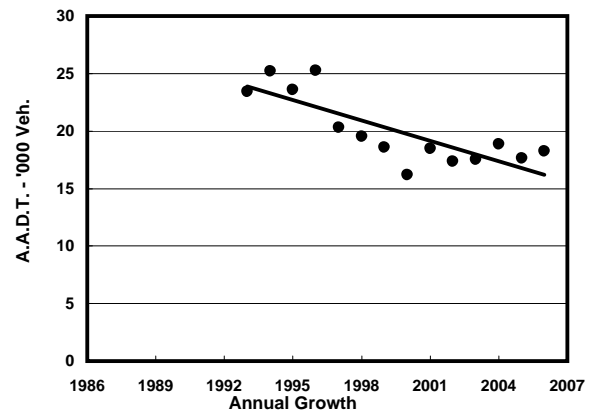
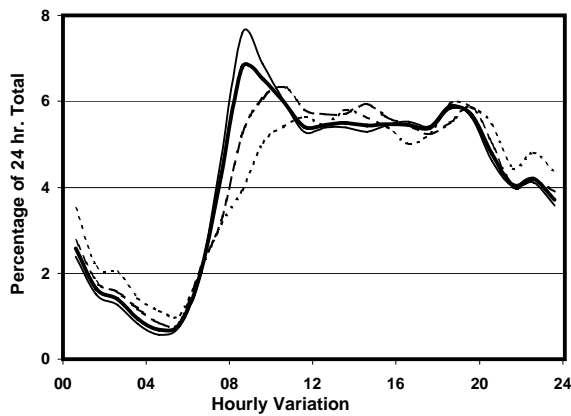
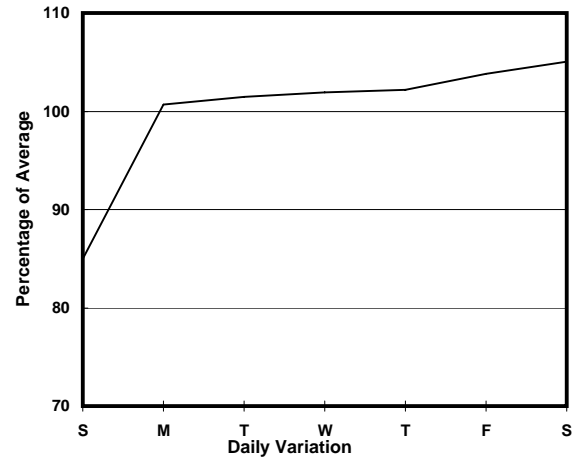
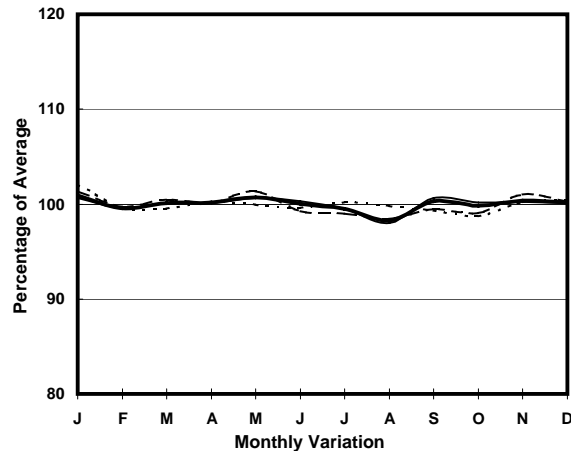
ROAD NETWORK MAJOR

ROAD TYPE DISTRICT DISTRIBUTOR

LINK CHEONG WAN RD & GILLIES AVE S (from RAILWAY TERMINUS to WUHU ST)



### 1. TRAFFIC FLOW VARIATION AND GROWTH



— All day — Mon.- Fri. - - - - - Sat. - - - - - Sun.

### 2. TRAFFIC CHARACTERISTICS (BY DIRECTION)

| Parameter                            | All - Day | Mon. - Fri. | Sat.      | Sun.      |
|--------------------------------------|-----------|-------------|-----------|-----------|
| <b>SOUTH BOUND</b>                   |           |             |           |           |
| A.A.D.T.                             | 7440      | 7750        | 7900      | 5890      |
| R 12 / 24 - %                        | 70        | 71.7        | 68.6      | 60.5      |
| R 16 / 24 - %                        | 88        | 89.1        | 86.5      | 81.9      |
| AM Peak Hour                         | 0800-0900 | 0800-0900   | 0900-1000 | 0900-1000 |
| One-way flow at AM peak hour         | 490       | 580         | 430       | 260       |
| T - % (AM)                           | -         | 10.5        | -         | -         |
| PM Peak Hour                         | 1800-1900 | 1800-1900   | 1600-1700 | 1800-1900 |
| One-way flow at PM peak hour         | 500       | 540         | 520       | 360       |
| T - % (PM)                           | -         | 9.8         | -         | -         |
| Prop.of commercial vehicles - 16 hr. | -         | 10.2        | -         | -         |
| <b>NORTH BOUND</b>                   |           |             |           |           |
| A.A.D.T.                             | 10820     | 11030       | 11430     | 9770      |
| R 12 / 24 - %                        | 65.8      | 66.8        | 64.1      | 62.5      |
| R 16 / 24 - %                        | 85.1      | 85.8        | 83.9      | 82.6      |
| AM Peak Hour                         | 0900-1000 | 0800-0900   | 0900-1000 | 0900-1000 |
| One-way flow at AM peak hour         | 750       | 850         | 740       | 530       |
| T - % (AM)                           | -         | 12.3        | -         | -         |
| PM Peak Hour                         | 1800-1900 | 1800-1900   | 1800-1900 | 1800-1900 |
| One-way flow at PM peak hour         | 570       | 570         | 590       | 570       |
| T - % (PM)                           | -         | 4.8         | -         | -         |
| Prop.of commercial vehicles - 16 hr. | -         | 6           | -         | -         |

### 3. OTHER INFORMATION AND COMMENT

**Coverage (B) Station 4207**  
**Year 2006**

**4. Vehicle classification and occupancy - Monday to Friday**

| Time                   |     | Class of vehicle |         |      |         |      |            |       |         |         |      |
|------------------------|-----|------------------|---------|------|---------|------|------------|-------|---------|---------|------|
|                        |     | Motor            | Private | Taxi | Private | PLB  | Goods veh. |       | Non     | Fr. Bus |      |
|                        |     | Cycle            | Car     |      | LB      |      | Light      | M & H | Fr. Bus | SD      | DD   |
| 0700-0800              | Pro | 1.5              | 3.6     | 56.1 | 0.0     | 18.9 | 8.7        | 0.0   | 5.1     | 0.0     | 6.1  |
|                        | Ocp | 1.3              | 1.7     | 1.7  | 0.0     | 11.1 | 1.5        | 0.0   | 5.6     | 0.0     | 17.9 |
| 0800-0900<br>Peak hour | Pro | 1.2              | 10.6    | 53.9 | 1.6     | 15.0 | 6.2        | 0.6   | 6.5     | 0.1     | 4.2  |
|                        | Ocp | 1.3              | 1.6     | 1.8  | 2.0     | 14.6 | 1.5        | 1.0   | 6.2     | 1.0     | 30.1 |
| 0900-1000              | Pro | 0.7              | 12.9    | 48.1 | 0.3     | 12.9 | 12.9       | 0.7   | 7.1     | 0.0     | 4.4  |
|                        | Ocp | 1.0              | 1.3     | 1.8  | 3.0     | 15.2 | 1.8        | 1.0   | 4.7     | 0.0     | 19.6 |
| 1000-1100              | Pro | 1.2              | 15.4    | 45.4 | 1.6     | 13.8 | 14.6       | 0.8   | 2.8     | 0.0     | 4.3  |
|                        | Ocp | 1.0              | 1.5     | 1.6  | 4.5     | 11.8 | 1.4        | 1.5   | 3.0     | 0.0     | 16.6 |
| 1100-1200              | Pro | 3.2              | 11.8    | 44.5 | 0.0     | 11.8 | 21.7       | 2.4   | 1.2     | 0.0     | 3.4  |
|                        | Ocp | 1.1              | 1.6     | 1.5  | 0.0     | 11.4 | 1.5        | 1.8   | 9.0     | 0.0     | 16.7 |
| 1200-1300              | Pro | 1.5              | 12.2    | 53.6 | 0.8     | 12.2 | 13.4       | 1.1   | 1.9     | 0.0     | 3.2  |
|                        | Ocp | 1.3              | 1.4     | 1.6  | 7.0     | 12.7 | 1.8        | 2.0   | 9.0     | 0.0     | 13.8 |
| 1300-1400              | Pro | 0.8              | 11.0    | 47.6 | 1.6     | 15.4 | 14.2       | 2.4   | 3.2     | 0.0     | 3.9  |
|                        | Ocp | 1.0              | 1.4     | 1.5  | 3.3     | 10.2 | 1.5        | 2.0   | 4.8     | 0.0     | 14.1 |
| 1400-1500              | Pro | 0.9              | 11.9    | 47.2 | 1.3     | 15.0 | 17.2       | 1.3   | 0.9     | 0.0     | 4.2  |
|                        | Ocp | 1.0              | 1.3     | 1.8  | 3.3     | 11.1 | 1.9        | 1.3   | 7.5     | 0.0     | 15.1 |
| 1500-1600              | Pro | 2.1              | 12.5    | 47.8 | 0.4     | 12.9 | 15.0       | 1.2   | 3.7     | 0.0     | 4.4  |
|                        | Ocp | 1.0              | 1.5     | 1.8  | 10.0    | 12.5 | 1.6        | 2.0   | 4.0     | 0.0     | 12.2 |
| 1600-1700              | Pro | 1.2              | 13.8    | 42.6 | 0.8     | 14.6 | 17.1       | 2.4   | 2.8     | 0.0     | 4.6  |
|                        | Ocp | 1.0              | 1.5     | 2.1  | 5.0     | 13.3 | 1.7        | 2.2   | 6.9     | 0.0     | 16.9 |
| 1700-1800              | Pro | 3.8              | 21.2    | 40.6 | 0.4     | 13.3 | 13.3       | 0.4   | 2.7     | 0.0     | 4.5  |
|                        | Ocp | 1.1              | 1.5     | 1.9  | 14.0    | 13.5 | 1.6        | 1.0   | 4.6     | 0.0     | 15.1 |
| 1800-1900              | Pro | 2.6              | 21.5    | 51.8 | 0.0     | 10.9 | 6.1        | 0.3   | 3.2     | 0.0     | 3.5  |
|                        | Ocp | 1.0              | 1.5     | 2.3  | 0.0     | 16.3 | 1.4        | 1.0   | 5.0     | 0.0     | 31.3 |
| 1900-2000              | Pro | 1.4              | 25.0    | 51.1 | 0.3     | 11.8 | 4.1        | 0.3   | 2.7     | 0.0     | 3.3  |
|                        | Ocp | 1.0              | 1.6     | 2.0  | 3.0     | 16.8 | 1.4        | 2.0   | 2.1     | 0.0     | 19.6 |
| 2000-2100              | Pro | 0.9              | 18.9    | 57.7 | 0.4     | 15.9 | 1.3        | 0.0   | 0.9     | 0.0     | 4.0  |
|                        | Ocp | 1.5              | 1.8     | 1.9  | 4.0     | 14.4 | 1.0        | 0.0   | 3.5     | 0.0     | 9.8  |
| 2100-2200              | Pro | 1.6              | 15.9    | 55.5 | 0.0     | 18.7 | 2.2        | 0.0   | 1.1     | 0.0     | 4.9  |
|                        | Ocp | 1.0              | 1.7     | 1.8  | 0.0     | 13.9 | 1.8        | 0.0   | 1.5     | 0.0     | 8.9  |
| 2200-2300              | Pro | 1.5              | 16.2    | 60.3 | 0.0     | 19.1 | 2.0        | 0.0   | 0.0     | 0.0     | 1.0  |
|                        | Ocp | 1.0              | 1.8     | 2.0  | 0.0     | 10.5 | 1.8        | 0.0   | 0.0     | 0.0     | 13.3 |
| 16 hours               | Pro | 1.6              | 14.9    | 50.0 | 0.6     | 14.2 | 10.7       | 0.9   | 3.0     | 0.1     | 4.0  |
|                        | Ocp | 1.1              | 1.5     | 1.8  | 4.4     | 13.1 | 1.6        | 1.8   | 5.1     | 1.0     | 17.7 |

**Legend**

- Pro.** Proportion of vehicles in % (Sum may not add up to 100% due to figure rounding)
- Ocp.** Average occupancy of vehicles
- M&H** Medium and Heavy