

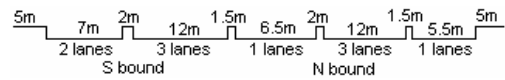
YEAR 2006

COVERAGE (B) STATION 4214

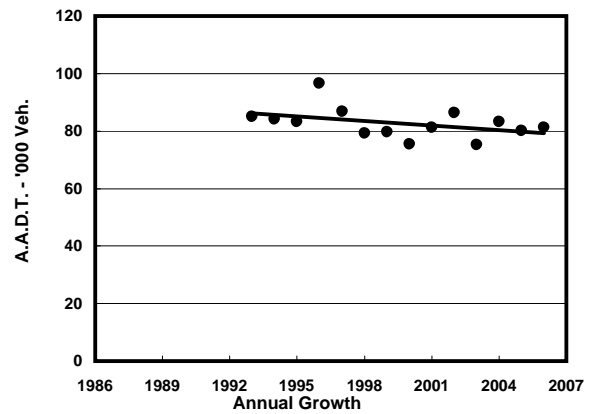
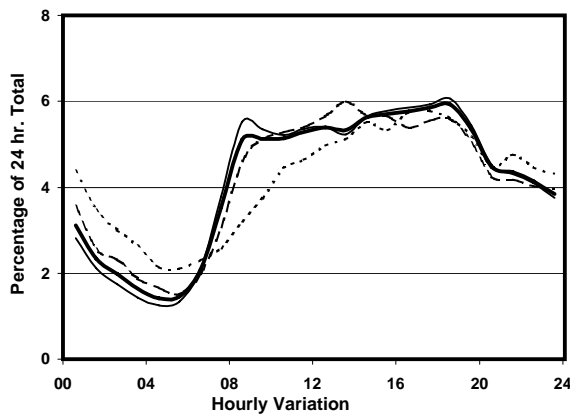
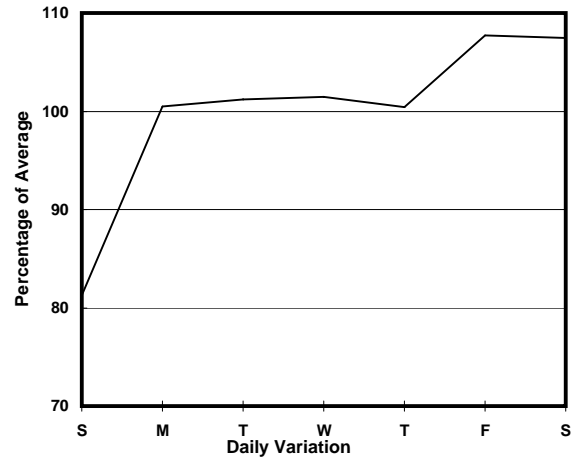
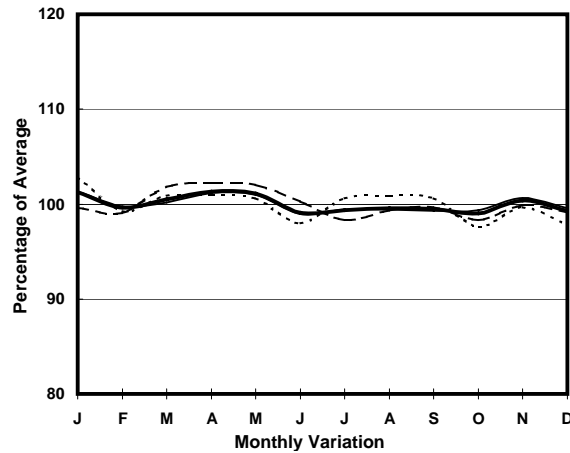
ROAD NETWORK MAJOR

ROAD TYPE PRIMARY DISTRIBUTOR

LINK FERRY ST & FERRY ST <FO> (from WATERLOO RD to SHANTUNG ST)



1. TRAFFIC FLOW VARIATION AND GROWTH



— All day — Mon.- Fri. - - - - Sat. - - - - - Sun.

2. TRAFFIC CHARACTERISTICS (BY DIRECTION)

Parameter	All - Day	Mon. - Fri.	Sat.	Sun.
SOUTH BOUND				
A.A.D.T.	42580	43920	46380	35360
R 12 / 24 - %	64.2	65.4	63	58.2
R 16 / 24 - %	81.7	83	79.8	76
AM Peak Hour	0900-1000	0800-0900	0900-1000	0900-1000
One-way flow at AM peak hour	2270	2450	2490	1450
T - % (AM)	-	7.5	-	-
PM Peak Hour	1800-1900	1800-1900	1800-1900	1700-1800
One-way flow at PM peak hour	2480	2600	2560	2030
T - % (PM)	-	3.2	-	-
Prop.of commercial vehicles - 16 hr.	-	6.1	-	-
NORTH BOUND				
A.A.D.T.	38730	40110	41940	31520
R 12 / 24 - %	63.4	64.8	63.2	55.1
R 16 / 24 - %	82.6	84	81.4	75.1
AM Peak Hour	0800-0900	0800-0900	0900-1000	0900-1000
One-way flow at AM peak hour	1950	2200	2030	1060
T - % (AM)	-	7.5	-	-
PM Peak Hour	1800-1900	1800-1900	1800-1900	1600-1700
One-way flow at PM peak hour	2340	2490	2390	1880
T - % (PM)	-	2.8	-	-
Prop.of commercial vehicles - 16 hr.	-	7.3	-	-

3. OTHER INFORMATION AND COMMENT

4. Vehicle classification and occupancy - Monday to Friday

Time		Class of vehicle									
		Motor	Private	Taxi	Private	PLB	Goods veh.		Non	Fr. Bus	
		Cycle	Car		LB		Light	M & H	Fr. Bus	SD	DD
0700-0800	Pro	8.2	20.7	22.7	0.7	6.2	28.3	7.7	4.2	0.0	1.2
	Ocp	1.1	1.5	2.0	1.7	12.5	1.5	1.4	8.1	0.0	2.4
0800-0900	Pro	6.2	30.6	21.2	0.7	9.8	23.9	4.9	2.3	0.1	0.4
	Ocp	1.0	1.4	1.9	2.8	12.4	1.7	1.5	6.7	1.0	4.4
0900-1000	Pro	6.9	28.7	16.8	1.3	5.5	32.7	6.4	1.2	0.0	0.4
	Ocp	1.0	1.4	1.9	1.9	11.2	1.7	1.5	2.9	0.0	1.0
1000-1100	Pro	6.5	19.5	18.1	0.8	4.6	41.7	7.8	0.6	0.0	0.3
	Ocp	1.0	1.6	1.9	2.2	8.9	1.5	1.5	3.8	0.0	1.0
1100-1200	Pro	5.1	24.1	17.1	1.5	4.1	39.2	8.1	0.5	0.0	0.3
	Ocp	1.1	1.4	1.9	2.2	6.9	1.5	1.6	2.2	0.0	1.0
1200-1300	Pro	5.0	27.4	18.5	0.6	3.8	38.1	5.1	1.4	0.0	0.2
	Ocp	1.0	1.4	2.0	1.7	9.1	1.5	1.6	11.7	0.0	1.0
1300-1400	Pro	4.4	24.8	16.2	1.1	4.2	40.5	8.3	0.5	0.0	0.1
	Ocp	1.0	1.5	2.1	2.2	9.9	1.6	1.6	1.2	0.0	1.0
1400-1500	Pro	5.8	27.5	17.3	0.5	4.2	37.3	6.9	0.5	0.0	0.1
	Ocp	1.0	1.5	2.2	1.3	7.6	1.7	1.6	2.0	0.0	1.0
1500-1600	Pro	7.6	28.7	17.6	1.6	4.1	33.3	6.0	0.9	0.1	0.3
	Ocp	1.1	1.4	2.0	3.9	9.0	1.5	1.6	13.6	1.0	1.0
1600-1700	Pro	4.9	30.8	19.9	1.4	3.3	32.2	5.7	1.5	0.0	0.3
	Ocp	1.1	1.5	1.9	2.6	10.0	1.6	1.5	11.4	0.0	1.0
1700-1800	Pro	6.5	33.7	21.2	0.7	4.8	28.0	2.9	1.9	0.0	0.4
	Ocp	1.1	1.4	1.9	2.3	12.0	1.6	1.5	6.1	0.0	1.0
1800-1900 Peak hour	Pro	9.4	38.6	22.0	0.3	9.1	17.7	1.6	1.0	0.0	0.4
	Ocp	1.1	1.6	2.1	3.0	14.1	1.5	1.7	4.4	0.0	1.0
1900-2000	Pro	6.6	44.3	26.5	0.2	8.1	11.0	1.9	0.9	0.1	0.5
	Ocp	1.1	1.6	2.0	2.0	14.1	1.5	1.3	3.2	1.0	1.0
2000-2100	Pro	4.2	40.4	32.1	0.1	8.9	9.9	2.8	1.0	0.1	0.6
	Ocp	1.1	1.6	2.1	2.0	11.9	1.5	1.5	15.6	1.0	1.0
2100-2200	Pro	5.6	37.7	34.5	0.9	7.7	9.7	2.0	1.4	0.0	0.5
	Ocp	1.1	1.5	1.9	3.3	9.8	1.6	1.1	8.2	0.0	1.0
2200-2300	Pro	3.9	35.3	38.4	0.7	9.5	8.9	1.9	1.0	0.1	0.4
	Ocp	1.3	1.8	2.2	1.7	12.1	1.7	1.5	13.9	1.0	1.0
16 hours	Pro	6.1	30.8	21.9	0.8	6.0	27.6	5.0	1.3	0.1	0.4
	Ocp	1.1	1.5	2.0	2.4	11.3	1.6	1.5	7.6	1.0	1.5

Legend

- Pro.** Proportion of vehicles in % (Sum may not add up to 100% due to figure rounding)
- Ocp.** Average occupancy of vehicles
- M&H** Medium and Heavy