

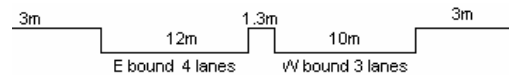
YEAR 2006

COVERAGE (B) STATION 4217

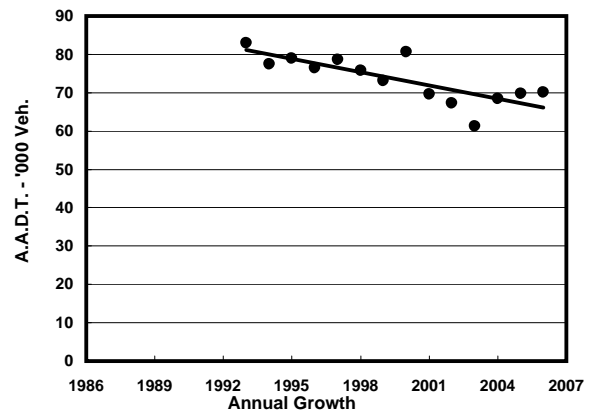
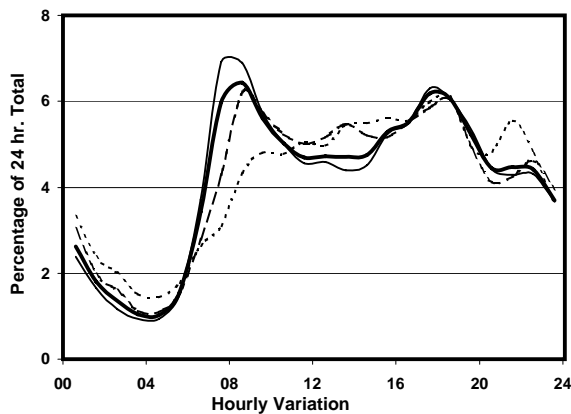
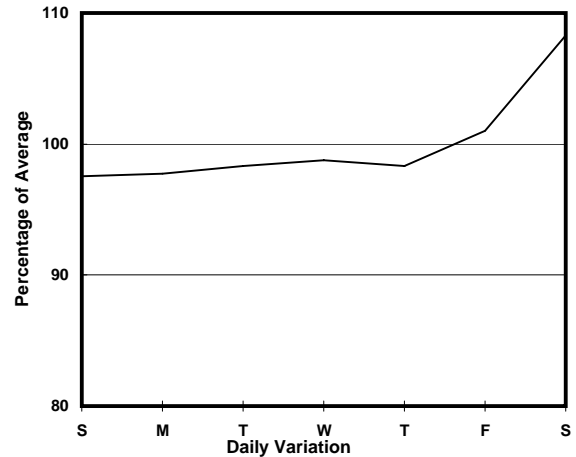
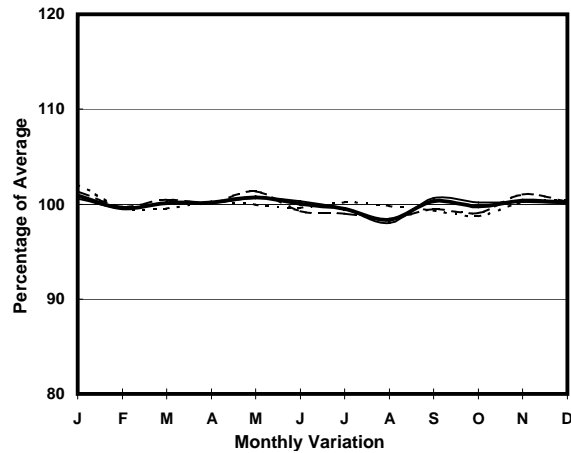
ROAD NETWORK MAJOR

ROAD TYPE PRIMARY DISTRIBUTOR

LINK CLEAR WATER BAY RD (from LUNG CHEUNG RD to
NEW CLEAR WATER BAY RD WESTERN JUNCTION)



1. TRAFFIC FLOW VARIATION AND GROWTH



— All day — Mon.- Fri. - - - - - Sat. - - - - - Sun.

2. TRAFFIC CHARACTERISTICS (BY DIRECTION)

Parameter	All - Day	Mon. - Fri.	Sat.	Sun.
EAST BOUND				
A.A.D.T.	37120	36840	40030	36010
R 12 / 24 - %	62	62.3	62.9	59.4
R 16 / 24 - %	83	83.7	82.1	80.2
AM Peak Hour	0800-0900	0800-0900	0800-0900	0900-1000
One-way flow at AM peak hour	2030	2100	2160	1710
T - % (AM)	-	9.1	-	-
PM Peak Hour	1800-1900	1800-1900	1800-1900	1800-1900
One-way flow at PM peak hour	2420	2480	2460	2130
T - % (PM)	-	6.6	-	-
Prop.of commercial vehicles - 16 hr.	-	11.1	-	-
WEST BOUND				
A.A.D.T.	33040	32600	36060	32620
R 12 / 24 - %	68.3	69.5	67.3	63.3
R 16 / 24 - %	84.1	84.4	83.7	82.6
AM Peak Hour	0700-0800	0700-0800	0800-0900	0900-1000
One-way flow at AM peak hour	2520	2970	2570	1600
T - % (AM)	-	14.3	-	-
PM Peak Hour	1700-1800	1700-1800	1700-1800	1800-1900
One-way flow at PM peak hour	2030	2010	2160	2060
T - % (PM)	-	10.2	-	-
Prop.of commercial vehicles - 16 hr.	-	10.9	-	-

3. OTHER INFORMATION AND COMMENT

4. Vehicle classification and occupancy - Monday to Friday

Time		Class of vehicle									
		Motor	Private	Taxi	Private	PLB	Goods veh.		Non	Fr. Bus	
		Cycle	Car		LB		Light	M & H	Fr. Bus	SD	DD
0700-0800 Peak hour	Pro	5.1	26.9	21.1	4.2	14.3	13.8	3.4	6.6	0.0	4.6
	Ocp	1.1	1.7	2.1	6.9	12.2	1.8	1.1	14.0	0.0	46.5
0800-0900	Pro	5.3	44.4	16.4	2.1	10.9	12.4	2.8	2.4	0.0	3.3
	Ocp	1.1	1.4	1.9	6.3	12.4	1.7	1.3	18.2	0.0	40.7
0900-1000	Pro	3.4	36.3	24.2	1.8	8.4	16.3	4.5	0.9	0.0	4.2
	Ocp	1.1	1.4	1.6	3.2	12.6	1.5	1.2	18.9	0.0	22.0
1000-1100	Pro	5.1	31.1	22.0	1.1	9.4	18.6	7.1	1.0	0.0	4.7
	Ocp	1.1	1.4	1.7	3.5	11.3	1.7	1.3	3.3	0.0	18.2
1100-1200	Pro	3.9	30.9	17.7	2.6	9.9	21.3	5.7	3.8	0.0	4.3
	Ocp	1.0	1.5	1.8	4.0	10.2	1.6	1.1	4.1	0.0	18.4
1200-1300	Pro	5.2	29.4	18.0	3.5	9.8	18.4	4.6	6.8	0.0	4.3
	Ocp	1.1	1.6	1.6	5.8	10.3	1.6	1.3	15.2	0.0	18.4
1300-1400	Pro	2.5	31.1	17.4	2.8	9.8	22.7	7.0	2.2	0.0	4.4
	Ocp	1.2	1.7	1.8	2.8	10.3	1.7	1.3	4.8	0.0	21.1
1400-1500	Pro	3.5	32.0	15.0	2.3	8.8	24.0	7.4	2.2	0.0	4.9
	Ocp	1.1	1.5	1.7	2.7	8.7	1.7	1.2	17.4	0.0	19.4
1500-1600	Pro	3.8	29.0	17.5	4.2	8.3	18.8	8.7	5.3	0.0	4.5
	Ocp	1.1	1.5	1.9	5.2	10.5	1.8	1.2	15.0	0.0	23.1
1600-1700	Pro	3.6	27.4	17.9	5.0	9.5	19.9	4.9	6.9	0.0	4.9
	Ocp	1.1	1.5	1.9	5.4	12.6	1.8	1.4	19.2	0.0	30.0
1700-1800	Pro	5.8	36.9	17.2	2.9	10.4	15.2	2.7	4.2	0.0	4.7
	Ocp	1.1	1.5	1.9	2.8	12.2	1.7	1.2	5.4	0.0	32.7
1800-1900	Pro	5.6	45.1	16.2	1.1	13.5	11.7	0.6	2.0	0.1	4.1
	Ocp	1.2	1.6	2.0	4.5	12.8	1.7	1.8	10.1	14.0	36.2
1900-2000	Pro	4.9	47.1	19.3	0.8	14.9	7.8	0.4	1.0	0.0	3.8
	Ocp	1.1	1.5	2.1	1.6	10.2	1.6	2.0	4.2	0.0	26.4
2000-2100	Pro	4.9	38.5	27.7	0.3	12.5	9.7	1.0	0.7	0.0	4.8
	Ocp	1.1	1.6	1.9	1.0	9.0	1.6	1.4	3.4	0.0	22.4
2100-2200	Pro	4.2	42.0	28.6	0.3	12.6	6.2	0.9	0.5	0.0	4.6
	Ocp	1.1	1.7	1.9	1.5	8.7	1.9	1.0	5.7	0.0	18.2
2200-2300	Pro	6.2	43.0	27.7	0.1	12.9	4.3	0.1	1.0	0.0	4.5
	Ocp	1.2	1.6	1.9	2.0	9.1	1.6	1.0	3.9	0.0	21.7
16 hours	Pro	4.6	36.2	20.0	2.2	11.1	14.9	3.7	3.0	0.1	4.4
	Ocp	1.1	1.5	1.9	4.7	11.0	1.7	1.3	12.7	14.0	26.9

Legend

Pro. Proportion of vehicles in % (Sum may not add up to 100% due to figure rounding)
Ocp. Average occupancy of vehicles
M&H Medium and Heavy