

YEAR

2006

LINK

LAI KING HILL RD (from PMH INT to KING CHO RD)

COVERAGE (B) STATION

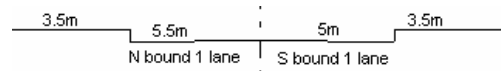
6204

ROAD NETWORK

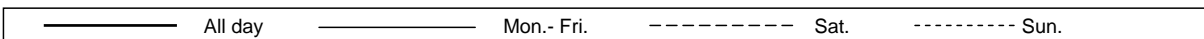
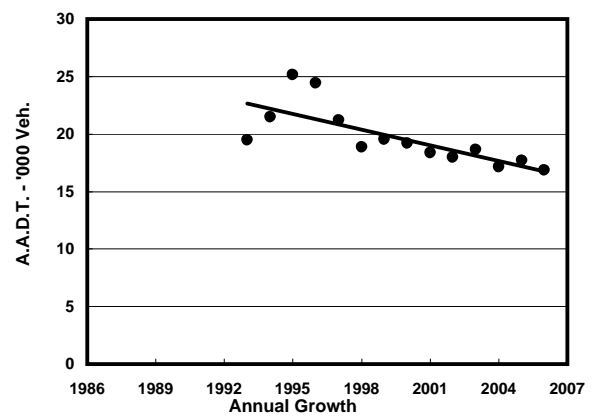
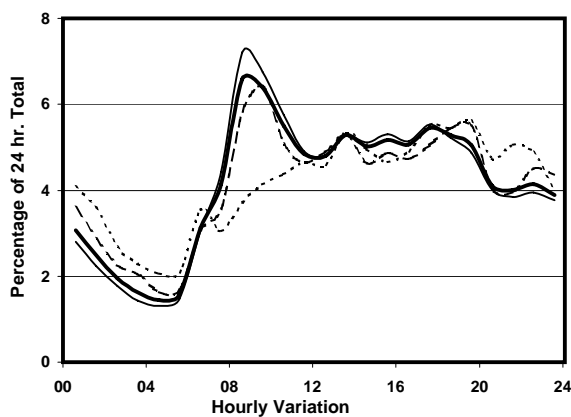
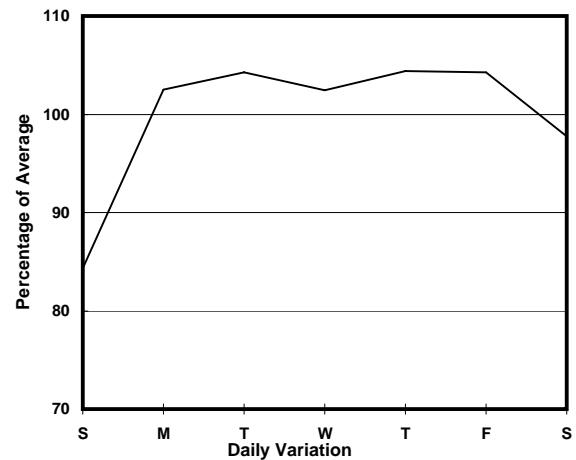
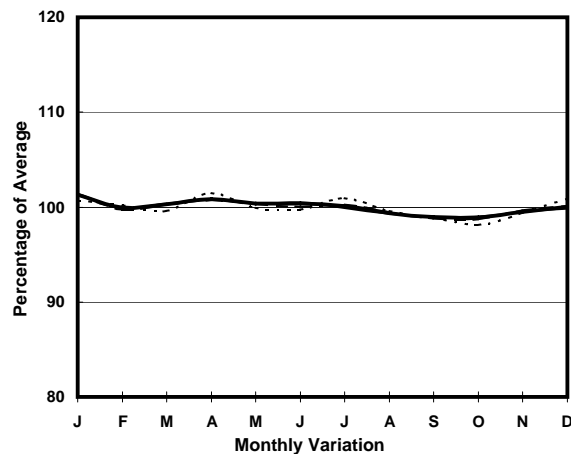
MAJOR

ROAD TYPE

DISTRICT DISTRIBUTOR



1. TRAFFIC FLOW VARIATION AND GROWTH



2. TRAFFIC CHARACTERISTICS (BY DIRECTION)

Parameter	All - Day	Mon. - Fri.	Sat.	Sun.
SOUTH BOUND				
A.A.D.T.	9130	9520	9030	7830
R 12 / 24 - %	63.5	65.4	60.4	55.8
R 16 / 24 - %	79.9	81.2	77.6	75
AM Peak Hour	0800-0900	0800-0900	0900-1000	0900-1000
One-way flow at AM peak hour	660	760	650	330
T - % (AM)	-	6.8	-	-
PM Peak Hour	1700-1800	1700-1800	1800-1900	1800-1900
One-way flow at PM peak hour	470	480	490	450
T - % (PM)	-	8.8	-	-
Prop.of commercial vehicles - 16 hr.	-	7.9	-	-

NORTH BOUND				
A.A.D.T.	7740	8110	7600	6540
R 12 / 24 - %	63.6	65.5	60.5	54.8
R 16 / 24 - %	81.9	83.3	79.5	76.5
AM Peak Hour	0800-0900	0800-0900	0900-1000	0900-1000
One-way flow at AM peak hour	450	520	410	260
T - % (AM)	-	11.8	-	-
PM Peak Hour	1700-1800	1700-1800	1800-1900	1700-1800
One-way flow at PM peak hour	450	490	420	350
T - % (PM)	-	7.4	-	-
Prop.of commercial vehicles - 16 hr.	-	10.3	-	-

3. OTHER INFORMATION AND COMMENT

4. Vehicle classification and occupancy - Monday to Friday

Time		Class of vehicle									
		Motor	Private	Taxi	Private	PLB	Goods veh.		Non	Fr. Bus	
		Cycle	Car		LB		Light	M & H	Fr. Bus	SD	DD
0700-0800	Pro	3.2	10.2	37.0	2.7	13.9	13.9	3.2	9.7	0.4	5.8
	Ocp	1.0	1.6	1.8	7.6	7.2	1.5	1.7	8.8	10.7	20.8
0800-0900 Peak hour	Pro	1.6	19.3	50.4	1.6	9.3	9.0	1.2	3.4	0.1	4.1
	Ocp	1.6	1.5	1.7	3.4	7.3	1.6	2.0	7.2	5.0	17.1
0900-1000	Pro	0.3	19.2	49.0	1.0	10.6	11.6	2.1	1.4	0.2	4.6
	Ocp	1.0	1.5	1.4	1.7	8.6	1.5	1.8	7.5	7.0	9.7
1000-1100	Pro	4.4	16.4	44.4	1.2	8.0	19.2	2.0	0.0	0.2	4.3
	Ocp	1.0	1.3	1.4	4.0	8.3	2.0	2.0	0.0	6.5	10.4
1100-1200	Pro	3.4	13.4	40.3	3.4	11.2	17.3	2.8	2.2	0.4	5.6
	Ocp	1.2	1.3	1.6	1.7	8.5	1.6	2.0	3.0	7.3	10.0
1200-1300	Pro	1.4	16.7	42.4	3.3	13.4	13.4	1.0	3.8	0.1	4.5
	Ocp	1.0	1.7	1.6	2.0	8.1	1.9	1.5	9.8	7.0	10.2
1300-1400	Pro	0.4	17.3	43.8	4.0	15.0	10.2	2.2	2.2	0.3	4.5
	Ocp	2.0	1.5	1.7	3.7	9.4	1.8	1.4	7.2	4.0	10.7
1400-1500	Pro	1.7	25.6	35.0	4.3	11.5	13.2	3.0	0.9	0.1	4.7
	Ocp	1.0	1.5	1.5	2.7	8.8	1.9	1.7	4.0	4.0	11.6
1500-1600	Pro	1.5	16.2	43.1	1.5	10.7	12.7	2.0	6.1	0.4	5.7
	Ocp	1.0	1.5	1.4	2.0	10.1	1.5	1.8	5.6	7.7	14.2
1600-1700	Pro	1.4	21.1	36.2	3.7	14.6	12.4	0.9	4.1	0.1	5.6
	Ocp	1.0	1.5	1.6	4.4	8.2	1.7	1.5	7.2	4.0	10.5
1700-1800	Pro	2.7	30.4	38.5	1.2	10.0	9.2	0.4	2.3	0.3	5.1
	Ocp	1.0	1.5	1.6	2.0	13.0	1.8	1.0	9.2	9.7	16.0
1800-1900	Pro	4.3	29.5	37.2	1.3	12.8	9.4	0.4	0.9	0.1	4.1
	Ocp	1.0	1.7	1.7	5.0	9.0	1.3	2.0	1.0	5.0	21.0
1900-2000	Pro	3.1	26.2	45.9	1.3	11.4	5.2	0.9	1.3	0.3	4.5
	Ocp	1.1	1.8	1.7	3.7	7.1	2.2	1.0	1.7	8.0	15.7
2000-2100	Pro	2.2	17.9	57.0	0.0	13.4	3.9	0.0	0.0	0.1	5.4
	Ocp	1.0	1.5	1.6	0.0	5.7	1.7	0.0	0.0	4.0	10.4
2100-2200	Pro	3.4	28.2	46.6	0.6	8.0	6.3	0.6	0.0	0.4	5.9
	Ocp	1.3	1.6	1.5	2.0	6.8	1.5	2.0	0.0	5.0	10.4
2200-2300	Pro	1.3	26.3	51.2	0.0	10.8	2.7	0.0	0.7	0.2	6.9
	Ocp	1.0	1.8	1.4	0.0	5.4	1.8	0.0	1.0	2.0	10.0
16 hours	Pro	2.2	21.0	43.6	2.0	11.4	10.8	1.4	2.4	0.2	5.0
	Ocp	1.1	1.6	1.6	3.3	8.3	1.7	1.7	7.0	6.7	13.1

Legend

Pro. Proportion of vehicles in % (Sum may not add up to 100% due to figure rounding)
Ocp. Average occupancy of vehicles
M&H Medium and Heavy