

YEAR

2006

LINK KAM SHEUNG RD (from KAM TIN RD to KAM TIN RD)

COVERAGE (B) STATION

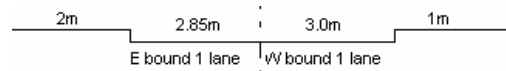
6208

ROAD NETWORK

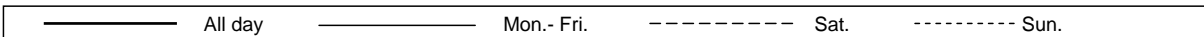
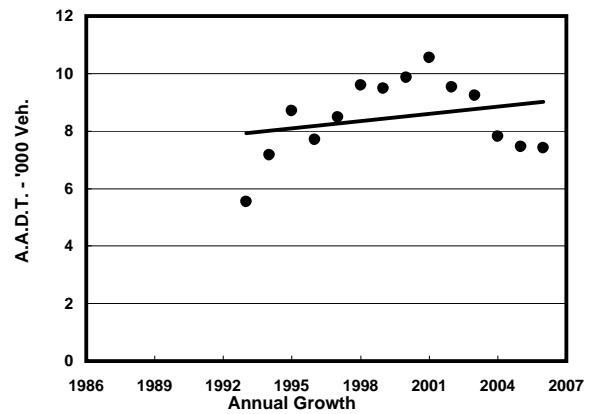
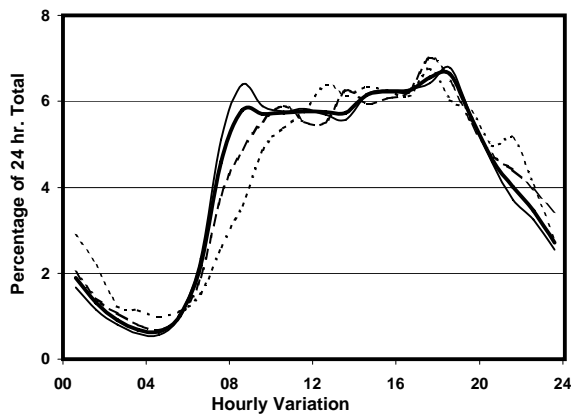
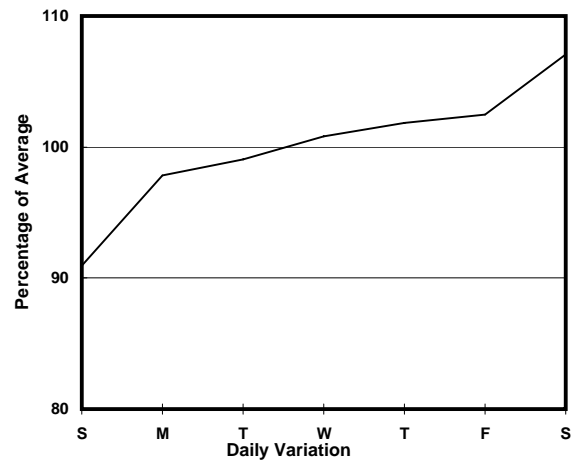
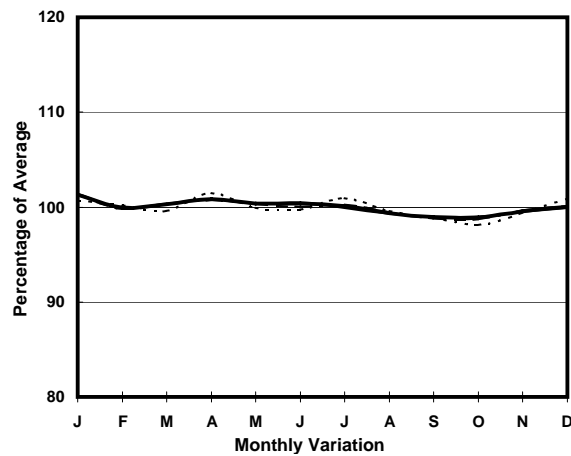
MAJOR

ROAD TYPE

RURAL ROAD



1. TRAFFIC FLOW VARIATION AND GROWTH



2. TRAFFIC CHARACTERISTICS (BY DIRECTION)

Parameter	All - Day	Mon. - Fri.	Sat.	Sun.
EAST BOUND				
A.A.D.T.	3920	3960	4180	3620
R 12 / 24 - %	68.6	69.9	66.7	63.8
R 16 / 24 - %	87.5	88.2	86.5	84.6
AM Peak Hour	0900-1000	0800-0900	0900-1000	0900-1000
One-way flow at AM peak hour	210	230	200	160
T - % (AM)	-	11.6	-	-
PM Peak Hour	1700-1800	1800-1900	1700-1800	1700-1800
One-way flow at PM peak hour	260	270	300	260
T - % (PM)	-	17.9	-	-
Prop.of commercial vehicles - 16 hr.	-	11.9	-	-
WEST BOUND				
A.A.D.T.	3490	3520	3790	3160
R 12 / 24 - %	73.5	74.6	71.8	68.9
R 16 / 24 - %	90	90.6	89	87.9
AM Peak Hour	0800-0900	0800-0900	0900-1000	0900-1000
One-way flow at AM peak hour	220	250	240	180
T - % (AM)	-	13.4	-	-
PM Peak Hour	1800-1900	1800-1900	1800-1900	1700-1800
One-way flow at PM peak hour	230	240	270	200
T - % (PM)	-	4.1	-	-
Prop.of commercial vehicles - 16 hr.	-	11.6	-	-

3. OTHER INFORMATION AND COMMENT

4. Vehicle classification and occupancy - Monday to Friday

Time		Class of vehicle									
		Motor	Private	Taxi	Private	PLB	Goods veh.		Non	Fr. Bus	
		Cycle	Car		LB		Light	M & H	Fr. Bus	SD	DD
0700-0800	Pro	0.0	33.4	11.9	1.1	19.4	16.2	6.5	7.5	0.8	3.2
	Ocp	0.0	1.4	1.5	17.0	9.9	1.5	1.0	13.9	7.0	30.1
0800-0900	Pro	0.0	39.9	6.7	6.7	11.4	22.8	7.6	1.0	0.7	3.3
	Ocp	0.0	1.3	1.7	9.3	11.6	2.0	1.3	46.0	3.0	26.5
0900-1000	Pro	0.0	41.3	8.1	0.9	12.6	19.7	12.6	0.0	0.7	4.3
	Ocp	0.0	1.5	1.4	4.0	8.4	1.6	1.1	0.0	1.7	16.8
1000-1100	Pro	1.0	37.4	5.2	0.0	8.3	36.4	7.3	0.0	0.8	3.6
	Ocp	1.0	1.4	1.6	0.0	8.9	1.6	1.1	0.0	1.0	16.3
1100-1200	Pro	1.0	39.4	9.9	2.0	8.9	30.5	4.9	0.0	0.5	3.0
	Ocp	1.0	1.4	1.7	1.5	8.3	1.6	1.4	0.0	1.0	19.5
1200-1300	Pro	2.4	48.2	4.8	4.0	10.4	22.5	4.8	0.0	0.4	2.4
	Ocp	1.0	1.5	1.8	10.6	10.8	1.8	1.2	0.0	2.0	19.4
1300-1400	Pro	0.0	48.5	3.2	0.0	11.1	21.5	8.7	4.0	0.4	2.6
	Ocp	0.0	1.5	1.8	0.0	9.3	1.6	1.1	30.4	2.5	17.1
1400-1500	Pro	1.8	44.0	4.5	1.8	9.9	27.0	6.3	0.9	0.5	3.4
	Ocp	1.5	1.6	1.4	4.0	8.0	1.4	1.1	1.0	2.0	19.2
1500-1600	Pro	0.9	49.7	4.4	1.8	9.8	23.9	5.3	0.9	0.4	2.9
	Ocp	1.0	1.5	1.6	1.5	7.6	1.3	1.2	20.0	1.0	15.6
1600-1700	Pro	2.5	47.8	6.7	0.0	9.2	25.2	4.2	0.8	0.4	3.1
	Ocp	1.0	1.5	1.8	0.0	10.3	1.5	1.2	9.0	1.5	20.9
1700-1800	Pro	1.0	43.1	5.0	1.0	11.0	21.1	8.0	5.0	0.8	4.0
	Ocp	1.0	1.3	1.2	3.0	10.9	1.3	1.5	10.2	2.3	29.9
1800-1900 Peak hour	Pro	1.0	46.3	5.8	2.9	9.6	23.1	1.9	4.8	0.7	3.9
	Ocp	1.0	1.4	1.7	9.0	13.6	1.5	1.0	16.2	1.7	37.4
1900-2000	Pro	2.1	66.1	3.2	1.1	9.4	11.5	1.1	1.1	0.8	3.7
	Ocp	1.0	1.4	1.7	1.0	13.8	1.4	1.0	1.0	1.7	17.3
2000-2100	Pro	2.6	66.5	9.1	1.3	7.8	5.2	2.6	0.0	0.7	4.2
	Ocp	1.0	1.6	1.6	4.0	8.2	1.5	1.0	0.0	1.0	15.6
2100-2200	Pro	0.0	68.8	8.6	1.4	8.6	2.9	2.9	1.4	0.7	4.7
	Ocp	0.0	1.3	2.3	3.0	5.3	1.0	1.5	1.0	1.0	14.2
2200-2300	Pro	0.0	68.6	7.8	0.0	3.9	3.9	7.8	0.0	1.5	6.4
	Ocp	0.0	1.4	1.5	0.0	3.5	1.5	1.3	0.0	1.0	14.5
16 hours	Pro	1.1	48.0	6.3	1.7	10.3	20.9	5.9	1.8	0.6	3.5
	Ocp	1.1	1.4	1.6	7.1	9.7	1.6	1.2	16.4	2.1	20.8

Legend

Pro. Proportion of vehicles in % (Sum may not add up to 100% due to figure rounding)
Ocp. Average occupancy of vehicles
M&H Medium and Heavy