

YEAR

2006

LINK FAN KAM RD (from KAM TIN RD to CASTLE PEAK RD)

COVERAGE (B) STATION

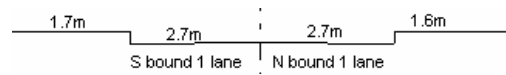
6212

ROAD NETWORK

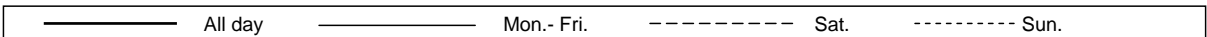
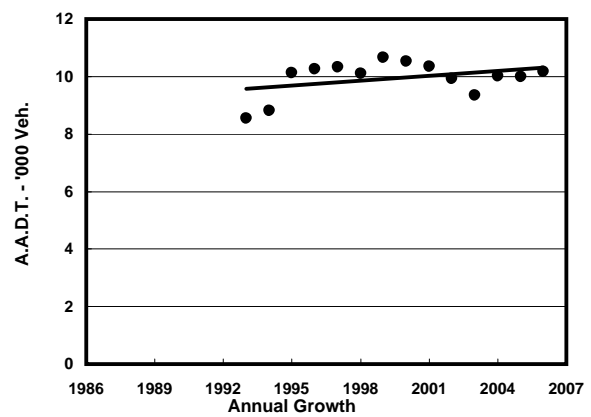
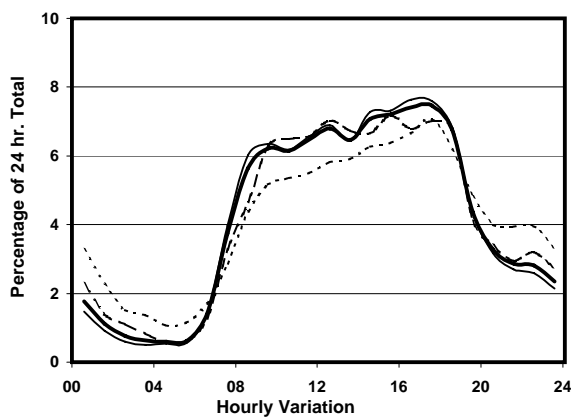
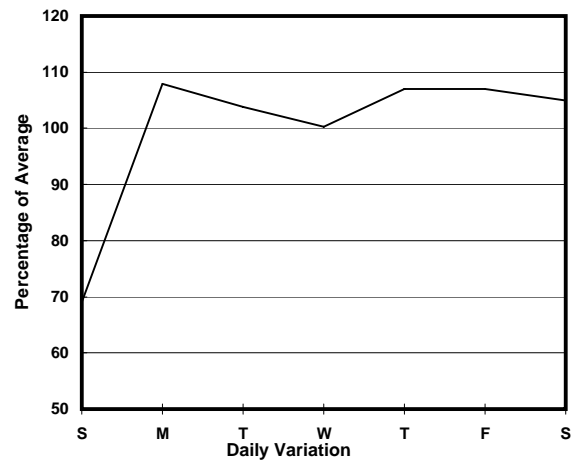
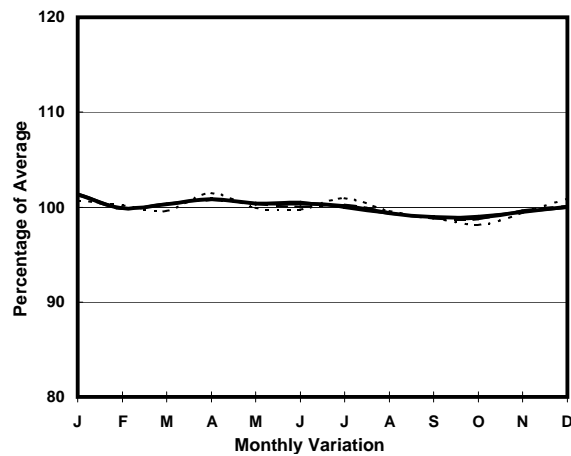
MAJOR

ROAD TYPE

RURAL ROAD



## 1. TRAFFIC FLOW VARIATION AND GROWTH



## 2. TRAFFIC CHARACTERISTICS (BY DIRECTION)

Parameter	All - Day	Mon. - Fri.	Sat.	Sun.
<b>SOUTH BOUND</b>				
A.A.D.T.	4890	5230	5220	3440
R 12 / 24 - %	77.4	79.1	75.6	67.6
R 16 / 24 - %	90.7	91.9	89.2	84.3
AM Peak Hour	0900-1000	0900-1000	0900-1000	0900-1000
One-way flow at AM peak hour	300	330	330	180
T - % (AM)	-	12.8	-	-
PM Peak Hour	1700-1800	1600-1700	1700-1800	1700-1800
One-way flow at PM peak hour	360	400	370	240
T - % (PM)	-	7.8	-	-
Prop.of commercial vehicles - 16 hr.	-	11.2	-	-
<b>NORTH BOUND</b>				
A.A.D.T.	5290	5670	5660	3720
R 12 / 24 - %	77.4	79	75.6	67.6
R 16 / 24 - %	90.8	91.9	89.2	84.3
AM Peak Hour	0900-1000	0900-1000	0900-1000	0900-1000
One-way flow at AM peak hour	330	360	360	190
T - % (AM)	-	11.4	-	-
PM Peak Hour	1700-1800	1600-1700	1700-1800	1700-1800
One-way flow at PM peak hour	400	430	400	260
T - % (PM)	-	10.3	-	-
Prop.of commercial vehicles - 16 hr.	-	10.6	-	-

## 3. OTHER INFORMATION AND COMMENT

**Coverage (B) Station 6212**  
**Year 2006**

**4. Vehicle classification and occupancy - Monday to Friday**

Time		Class of vehicle									
		Motor	Private	Taxi	Private	PLB	Goods veh.		Non	Fr. Bus	
		Cycle	Car		LB		Light	M & H	Fr. Bus	SD	DD
0700-0800	Pro	0.0	36.6	13.4	1.2	12.2	23.2	8.5	2.4	1.8	0.6
	Ocp	0.0	1.6	1.8	1.0	10.9	1.5	1.4	13.5	31.7	20.0
0800-0900	Pro	1.6	40.3	11.3	3.2	6.5	24.2	11.3	0.0	1.2	0.4
	Ocp	1.0	1.5	1.2	2.8	15.0	1.4	1.1	0.0	23.3	39.5
0900-1000	Pro	0.0	44.7	7.4	5.4	5.4	25.0	10.8	0.0	0.8	0.3
	Ocp	0.0	1.3	1.5	5.1	8.6	1.5	1.2	0.0	11.6	16.5
1000-1100	Pro	0.0	37.6	5.3	0.9	6.1	32.4	15.8	0.9	0.9	0.2
	Ocp	0.0	1.3	2.2	3.0	11.4	1.6	1.2	2.0	14.8	9.0
1100-1200	Pro	0.0	32.4	13.3	1.7	3.3	36.5	10.8	0.8	0.8	0.4
	Ocp	0.0	1.3	1.6	1.0	7.3	1.5	1.1	2.0	12.0	21.5
1200-1300	Pro	0.0	39.7	13.5	5.4	5.4	23.6	8.1	3.4	0.8	0.2
	Ocp	0.0	1.5	1.9	5.5	6.4	1.4	1.2	10.8	17.0	13.0
1300-1400	Pro	1.6	40.2	11.2	2.4	3.2	27.3	12.9	0.0	1.0	0.2
	Ocp	1.0	1.7	2.2	1.7	11.8	1.9	1.4	0.0	17.6	11.0
1400-1500	Pro	0.6	46.3	8.4	1.8	3.0	29.5	9.0	0.6	0.8	0.0
	Ocp	1.0	1.5	1.6	1.0	6.8	1.5	1.3	1.0	14.2	0.0
1500-1600	Pro	0.0	30.8	12.0	4.4	1.9	37.1	12.6	0.0	0.9	0.3
	Ocp	0.0	1.8	1.9	9.4	10.0	1.5	1.2	0.0	13.2	9.0
1600-1700 Peak hour	Pro	0.0	43.5	5.0	4.4	2.5	35.3	7.6	0.6	0.8	0.2
	Ocp	0.0	1.7	1.5	2.3	12.0	1.4	1.2	25.0	12.2	17.0
1700-1800	Pro	0.0	51.1	12.3	0.7	2.7	21.1	7.5	3.4	0.9	0.3
	Ocp	0.0	1.5	1.5	1.0	14.3	1.5	1.2	2.4	25.8	34.0
1800-1900	Pro	0.7	61.7	7.3	1.3	2.7	19.9	4.6	0.7	1.0	0.2
	Ocp	1.0	1.7	1.4	2.0	14.5	1.6	1.0	1.0	26.5	33.0
1900-2000	Pro	1.0	66.8	4.1	1.0	8.2	17.5	0.0	0.0	1.0	0.3
	Ocp	1.0	1.3	1.3	3.0	12.3	1.3	0.0	0.0	21.3	12.0
2000-2100	Pro	3.9	63.0	18.0	0.0	6.4	2.6	3.9	0.0	1.9	0.3
	Ocp	1.0	1.5	1.4	0.0	6.6	1.0	1.0	0.0	7.7	16.0
2100-2200	Pro	1.8	60.6	3.7	1.8	9.2	14.7	5.5	0.0	2.8	0.0
	Ocp	1.0	1.5	1.5	2.0	7.8	1.6	1.0	0.0	8.3	0.0
2200-2300	Pro	2.0	62.6	12.1	0.0	14.1	4.0	2.0	0.0	2.0	1.0
	Ocp	1.0	1.5	1.3	0.0	5.7	1.5	1.0	0.0	7.0	9.5
16 hours	Pro	0.6	45.7	9.8	2.6	4.9	25.5	8.7	0.9	1.1	0.3
	Ocp	1.0	1.5	1.6	4.1	10.0	1.5	1.2	7.3	16.8	19.6

**Legend**

**Pro.** Proportion of vehicles in % (Sum may not add up to 100% due to figure rounding)  
**Ocp.** Average occupancy of vehicles  
**M&H** Medium and Heavy