

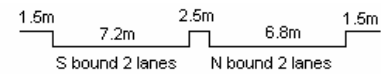
YEAR 2006

COVERAGE (B) STATION 6213

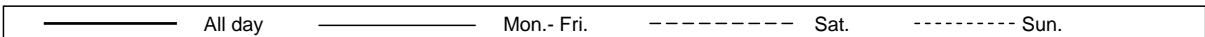
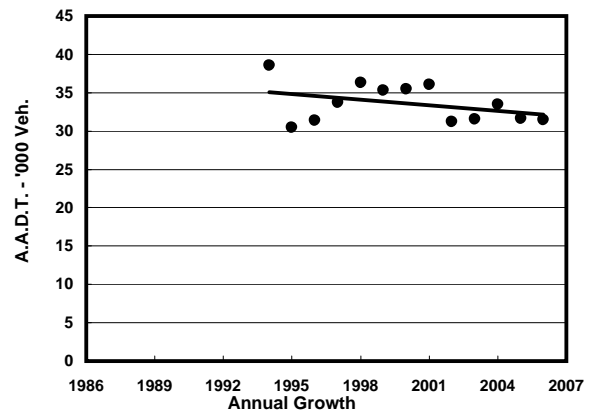
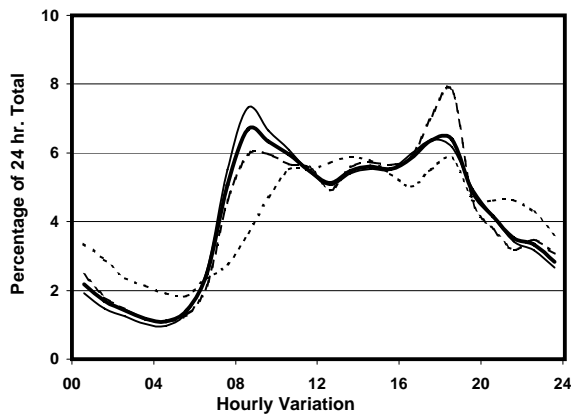
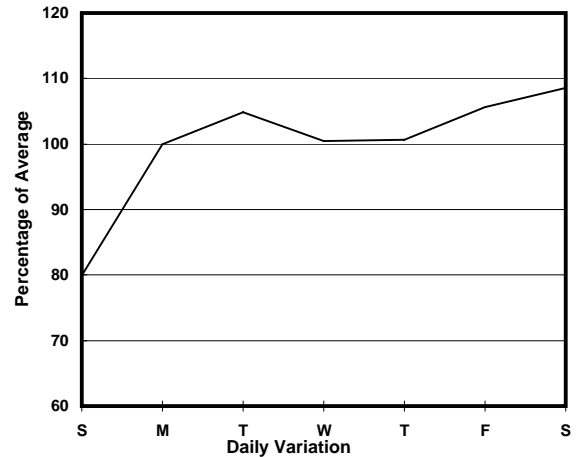
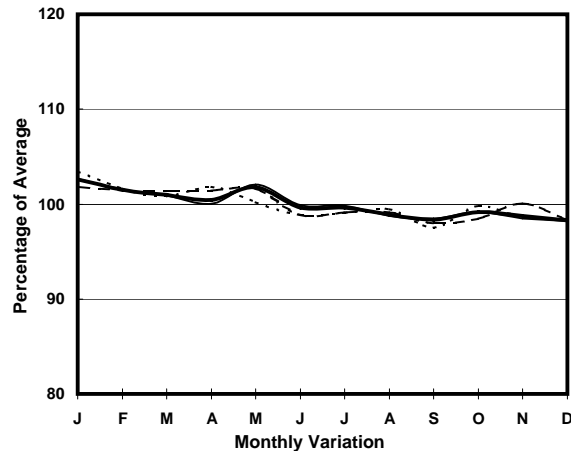
ROAD NETWORK MAJOR

ROAD TYPE RURAL TRUNK ROAD

LINK CASTLE PEAK RD - HUNG SHUI KIU (from TIN HA RD to LAM TEI INT)



### 1. TRAFFIC FLOW VARIATION AND GROWTH



### 2. TRAFFIC CHARACTERISTICS (BY DIRECTION)

Parameter	All - Day	Mon. - Fri.	Sat.	Sun.
<b>SOUTH BOUND</b>				
A.A.D.T.	15930	16580	17680	12260
R 12 / 24 - %	73.6	74.8	73.9	64.4
R 16 / 24 - %	86.9	87.9	86.6	80.4
AM Peak Hour	0800-0900	0800-0900	0900-1000	0900-1000
One-way flow at AM peak hour	1150	1280	1220	730
T - % (AM)	-	25.9	-	-
PM Peak Hour	1700-1800	1700-1800	1700-1800	1800-1900
One-way flow at PM peak hour	1040	1060	1450	720
T - % (PM)	-	22.3	-	-
Prop.of commercial vehicles - 16 hr.	-	25.9	-	-
<b>NORTH BOUND</b>				
A.A.D.T.	15550	16000	16860	13260
R 12 / 24 - %	66	67.1	66.8	58.6
R 16 / 24 - %	84.6	85.6	84.3	78.7
AM Peak Hour	0800-0900	0800-0900	0900-1000	0900-1000
One-way flow at AM peak hour	960	1100	840	480
T - % (AM)	-	19.9	-	-
PM Peak Hour	1800-1900	1800-1900	1800-1900	1700-1800
One-way flow at PM peak hour	1070	1030	1660	800
T - % (PM)	-	14.1	-	-
Prop.of commercial vehicles - 16 hr.	-	23.4	-	-

### 3. OTHER INFORMATION AND COMMENT

**Coverage (B) Station 6213**  
**Year 2006**

**4. Vehicle classification and occupancy - Monday to Friday**

Time		Class of vehicle									
		Motor	Private	Taxi	Private	PLB	Goods veh.		Non	Fr. Bus	
		Cycle	Car		LB		Light	M & H	Fr. Bus	SD	DD
0700-0800	Pro	2.3	17.6	13.9	1.7	5.7	26.4	20.7	9.9	0.3	1.6
	Ocp	1.0	1.5	1.7	3.5	8.0	1.5	1.1	8.3	10.0	33.3
0800-0900 Peak hour	Pro	1.9	39.2	10.3	1.9	4.1	19.5	18.8	2.8	0.3	1.3
	Ocp	1.1	1.4	1.5	4.0	8.6	1.4	1.1	5.7	8.0	30.4
0900-1000	Pro	1.7	31.0	12.0	1.1	3.7	22.8	22.8	3.4	0.3	1.2
	Ocp	1.1	1.3	1.7	3.4	6.8	1.4	1.1	2.5	4.6	12.0
1000-1100	Pro	1.2	23.4	11.2	1.0	4.4	27.3	27.8	2.2	0.2	1.3
	Ocp	1.0	1.4	1.4	2.3	6.4	1.3	1.1	1.2	3.5	9.8
1100-1200	Pro	0.9	27.5	9.0	2.0	3.2	27.8	25.8	2.3	0.3	1.2
	Ocp	1.0	1.3	1.3	2.1	8.4	1.3	1.2	1.3	6.8	10.1
1200-1300	Pro	0.3	26.5	12.5	3.0	4.9	26.5	20.7	4.0	0.2	1.4
	Ocp	1.0	1.4	1.4	1.7	8.4	1.4	1.1	4.5	8.0	15.1
1300-1400	Pro	1.0	20.7	11.1	2.1	3.9	28.5	29.2	2.1	0.3	1.2
	Ocp	1.0	1.4	1.5	3.6	7.5	1.4	1.1	2.9	6.5	13.0
1400-1500	Pro	1.1	28.1	9.6	2.4	4.0	24.9	26.2	2.1	0.3	1.2
	Ocp	1.3	1.5	1.6	3.3	6.5	1.4	1.1	3.9	6.8	9.4
1500-1600	Pro	0.6	27.8	11.0	2.3	3.8	22.3	27.0	3.5	0.2	1.5
	Ocp	1.0	1.5	1.3	3.3	7.7	1.4	1.0	3.8	7.0	8.9
1600-1700	Pro	2.1	27.4	8.3	1.9	3.1	24.1	27.4	4.3	0.2	1.3
	Ocp	1.1	1.3	1.7	1.5	8.9	1.5	1.1	4.6	8.3	13.0
1700-1800	Pro	1.2	32.8	12.2	2.0	3.5	21.8	21.1	4.2	0.2	1.0
	Ocp	1.0	1.3	1.6	2.0	12.1	1.5	1.1	2.9	11.5	22.8
1800-1900	Pro	1.6	44.9	8.5	1.6	3.9	23.4	12.6	2.1	0.2	1.2
	Ocp	1.0	1.5	1.7	1.3	14.8	1.7	1.1	1.6	9.5	22.3
1900-2000	Pro	3.0	53.7	14.5	1.1	4.3	14.5	3.2	4.3	0.3	1.2
	Ocp	1.2	1.5	1.5	1.3	13.3	1.5	1.3	4.1	7.8	21.6
2000-2100	Pro	2.7	49.1	18.2	0.3	3.5	13.4	5.9	5.3	0.3	1.4
	Ocp	1.0	1.6	1.8	1.0	9.0	1.4	1.1	2.3	6.2	15.4
2100-2200	Pro	1.9	63.7	13.8	0.8	4.6	8.1	3.5	1.5	0.3	1.9
	Ocp	1.0	1.6	1.3	1.5	10.1	1.4	1.0	2.0	4.3	14.7
2200-2300	Pro	0.0	45.6	23.7	0.6	7.1	13.0	3.0	4.1	0.6	2.4
	Ocp	0.0	1.3	1.7	1.0	8.4	1.4	1.2	1.0	5.3	19.2
16 hours	Pro	1.5	34.1	12.0	1.6	4.1	22.1	19.4	3.6	0.3	1.3
	Ocp	1.1	1.4	1.6	2.5	9.0	1.4	1.1	4.0	7.1	17.2

**Legend**

**Pro.** Proportion of vehicles in % (Sum may not add up to 100% due to figure rounding)  
**Ocp.** Average occupancy of vehicles  
**M&H** Medium and Heavy