

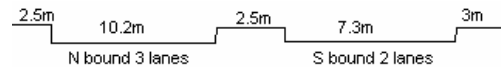
YEAR 2006

COVER AGE (B) STATION 6214

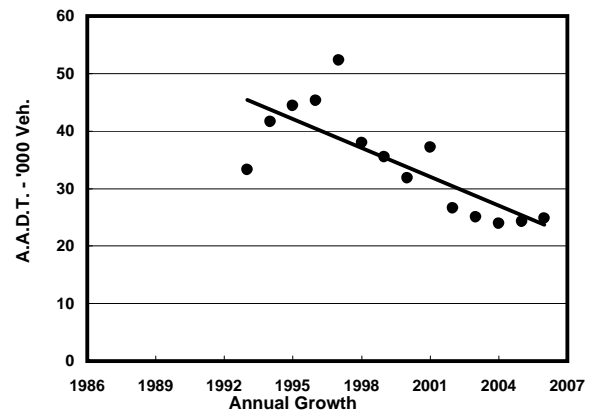
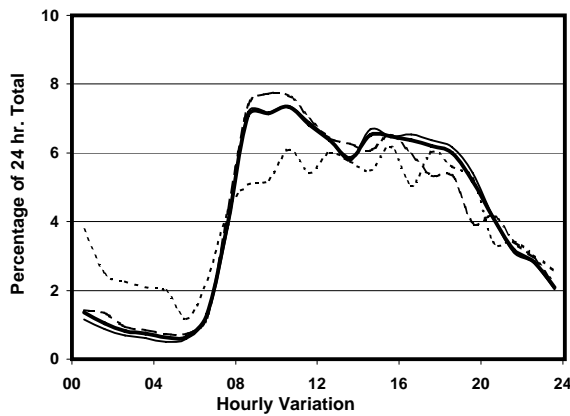
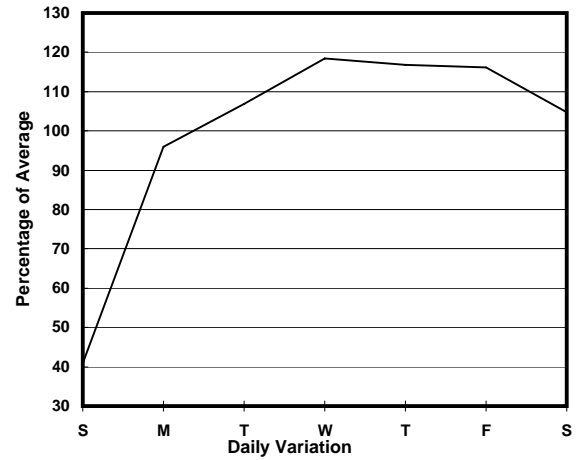
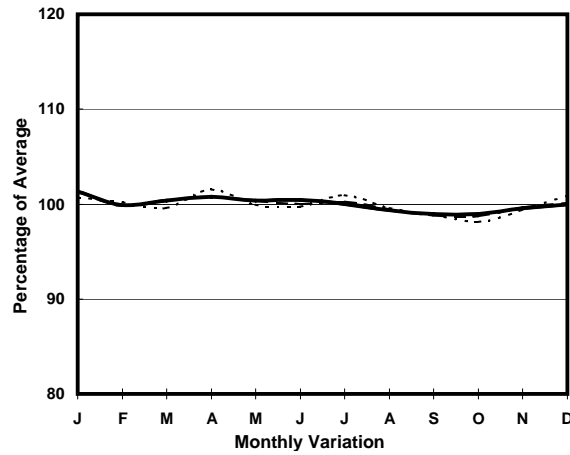
ROAD NETWORK MAJOR

ROAD TYPE LOCAL DISTRIBUTOR

LINK CONTAINER PORT RD S (from N/O PMH INT to S/O PMH INT)



1. TRAFFIC FLOW VARIATION AND GROWTH



— All day — Mon.- Fri. - - - - - Sat. - - - - - Sun.

2. TRAFFIC CHARACTERISTICS (BY DIRECTION)

Parameter	All - Day	Mon. - Fri.	Sat.	Sun.
SOUTH BOUND				
A.A.D.T.	11240	13030	11620	4620
R 12 / 24 - %	76.6	77.2	77.8	65
R 16 / 24 - %	91.8	92.8	90.6	81.8
AM Peak Hour	0800-0900	0800-0900	0900-1000	0800-0900
One-way flow at AM peak hour	760	880	890	240
T - % (AM)	-	39.3	-	-
PM Peak Hour	1800-1900	1600-1700	1700-1800	1700-1800
One-way flow at PM peak hour	770	930	700	350
T - % (PM)	-	55.3	-	-
Prop.of commercial vehicles - 16 hr.	-	50.9	-	-
NORTH BOUND				
A.A.D.T.	13560	15440	15190	5880
R 12 / 24 - %	75.7	76.5	74.7	67.3
R 16 / 24 - %	91	91.8	90.5	81
AM Peak Hour	0900-1000	0900-1000	0900-1000	0900-1000
One-way flow at AM peak hour	1030	1170	1190	390
T - % (AM)	-	62.6	-	-
PM Peak Hour	1600-1700	1600-1700	1600-1700	1600-1700
One-way flow at PM peak hour	820	940	950	340
T - % (PM)	-	57.6	-	-
Prop.of commercial vehicles - 16 hr.	-	55.2	-	-

3. OTHER INFORMATION AND COMMENT

4. Vehicle classification and occupancy - Monday to Friday

Time		Class of vehicle									
		Motor	Private	Taxi	Private	PLB	Goods veh.		Non	Fr. Bus	
		Cycle	Car		LB		Light	M & H	Fr. Bus	SD	DD
0700-0800	Pro	4.7	4.3	19.9	0.3	2.0	15.6	50.2	3.0	0.0	0.0
	Ocp	1.0	1.2	1.7	2.0	12.5	1.4	1.1	17.2	0.0	0.0
0800-0900	Pro	0.8	10.3	28.6	0.0	0.6	20.3	36.7	2.8	0.0	0.0
	Ocp	1.0	1.2	1.6	0.0	14.3	1.5	1.5	8.1	0.0	0.0
0900-1000	Pro	1.2	7.2	9.0	0.6	0.2	22.2	59.2	0.4	0.0	0.0
	Ocp	1.2	1.1	1.7	2.0	17.0	1.6	1.2	1.5	0.0	0.0
1000-1100 Peak hour	Pro	1.1	3.5	7.1	0.4	0.7	28.8	57.2	1.1	0.0	0.0
	Ocp	1.0	1.2	1.8	2.0	12.3	1.4	1.1	1.4	0.0	0.0
1100-1200	Pro	0.5	6.7	4.9	0.7	0.7	33.0	52.7	0.7	0.0	0.0
	Ocp	1.0	1.1	1.8	2.0	10.3	1.4	1.2	1.0	0.0	0.0
1200-1300	Pro	1.2	7.8	5.6	0.3	0.6	21.2	62.6	0.6	0.0	0.0
	Ocp	1.0	1.6	1.8	1.0	5.0	1.5	1.2	1.0	0.0	0.0
1300-1400	Pro	0.3	7.8	3.5	0.0	0.9	31.7	55.6	0.3	0.0	0.0
	Ocp	1.0	1.4	1.8	0.0	3.7	1.5	1.2	1.0	0.0	0.0
1400-1500	Pro	2.0	9.4	6.1	0.3	1.0	27.0	53.9	0.3	0.0	0.0
	Ocp	1.1	1.3	1.8	4.0	8.0	1.4	1.2	1.0	0.0	0.0
1500-1600	Pro	1.0	7.1	4.9	1.0	0.7	27.9	56.7	0.7	0.0	0.0
	Ocp	1.3	1.2	1.9	1.3	15.0	1.6	1.2	13.3	0.0	0.0
1600-1700	Pro	1.4	9.7	6.6	0.0	1.1	24.7	55.1	1.4	0.0	0.0
	Ocp	1.0	1.4	2.0	0.0	7.8	1.4	1.1	12.6	0.0	0.0
1700-1800	Pro	3.0	10.6	9.0	0.3	0.8	27.7	45.7	3.0	0.0	0.0
	Ocp	1.0	1.4	1.8	1.0	5.3	1.5	1.1	28.7	0.0	0.0
1800-1900	Pro	4.9	22.3	12.8	0.0	0.9	14.4	41.6	3.1	0.0	0.0
	Ocp	1.1	1.2	1.7	0.0	13.7	1.4	1.1	16.4	0.0	0.0
1900-2000	Pro	3.8	18.6	18.3	0.4	1.5	13.3	43.0	1.1	0.0	0.0
	Ocp	1.0	1.2	1.8	3.0	9.8	1.5	1.1	13.7	0.0	0.0
2000-2100	Pro	1.3	17.1	17.7	0.0	1.9	8.2	53.8	0.0	0.0	0.0
	Ocp	1.0	1.3	1.5	0.0	4.3	1.2	1.0	0.0	0.0	0.0
2100-2200	Pro	1.8	16.5	15.6	0.0	1.8	10.1	53.2	0.9	0.0	0.0
	Ocp	1.0	1.1	1.3	0.0	4.0	1.7	1.1	5.0	0.0	0.0
2200-2300	Pro	2.0	6.0	30.0	0.0	0.0	7.0	52.0	3.0	0.0	0.0
	Ocp	1.0	1.3	1.6	0.0	0.0	1.7	1.1	11.3	0.0	0.0
16 hours	Pro	1.8	9.6	11.2	0.3	0.9	23.1	51.8	1.4	0.0	0.0
	Ocp	1.1	1.3	1.7	1.9	9.6	1.5	1.2	13.0	0.0	0.0

Legend

Pro. Proportion of vehicles in % (Sum may not add up to 100% due to figure rounding)
Ocp. Average occupancy of vehicles
M&H Medium and Heavy