

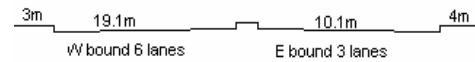
YEAR 2007

CORE STATION 1002

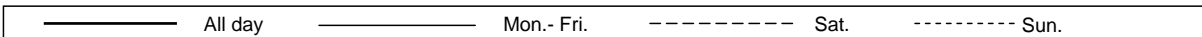
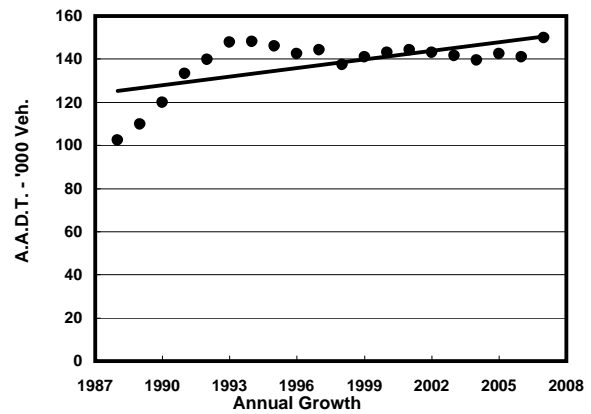
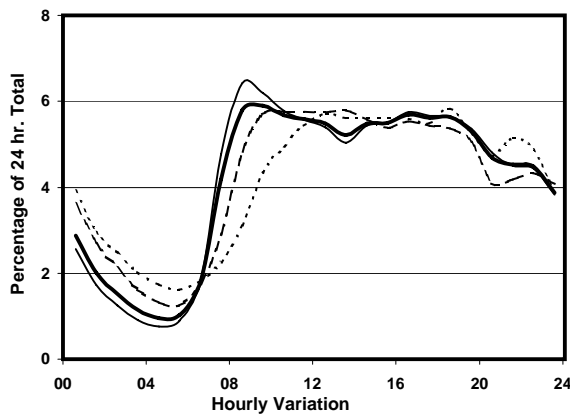
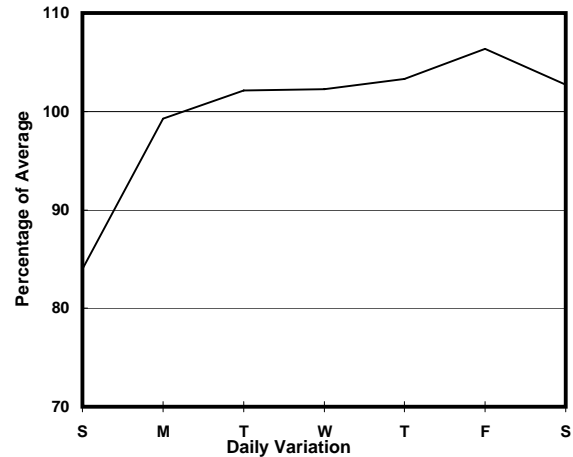
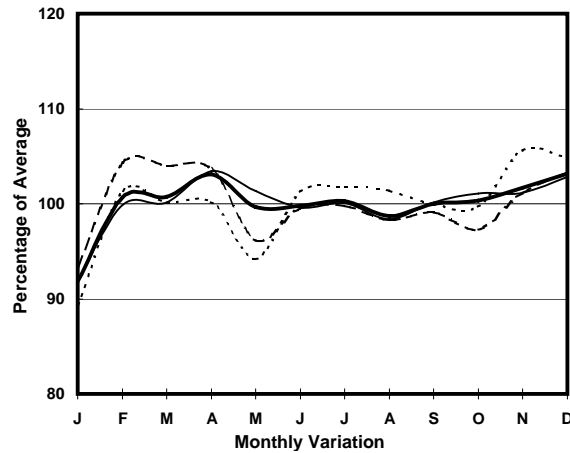
ROAD NETWORK MAJOR

ROAD TYPE URBAN TRUNK ROAD

LINK VICTORIA PARK RD (from HOUSTON ST to ISLAND EASTERN CORRIDOR)



1. TRAFFIC FLOW VARIATION AND GROWTH



2. TRAFFIC CHARACTERISTICS (BY DIRECTION)

Parameter	All - Day	Mon. - Fri.	Sat.	Sun.
EAST BOUND				
A.A.D.T.	72040	75000	73790	59890
R 12 / 24 - %	64.7	66.1	62.8	58.1
R 16 / 24 - %	84.7	86.3	81.2	79.1
AM Peak Hour	0900-1000	0800-0900	0900-1000	0900-1000
One-way flow at AM peak hour	4050	4520	3720	2390
T - % (AM)	-	7.6	-	-
PM Peak Hour	1600-1700	1600-1700	1600-1700	1600-1700
One-way flow at PM peak hour	4400	4620	4430	3540
T - % (PM)	-	9.3	-	-
Prop.of commercial vehicles - 16 hr.	-	7.7	-	-

WEST BOUND				
A.A.D.T.	77940	80280	81590	67260
R 12 / 24 - %	66.8	68.1	64.8	61
R 16 / 24 - %	84.8	86.2	81.8	80
AM Peak Hour	0800-0900	0800-0900	0900-1000	0900-1000
One-way flow at AM peak hour	4810	5450	5140	3120
T - % (AM)	-	8.6	-	-
PM Peak Hour	1800-1900	1800-1900	1800-1900	1800-1900
One-way flow at PM peak hour	4330	4470	4310	3930
T - % (PM)	-	7.2	-	-
Prop.of commercial vehicles - 16 hr.	-	7.8	-	-

3. OTHER INFORMATION AND COMMENT

4. Vehicle classification and occupancy - Monday to Friday

Time		Class of vehicle									
		Motor	Private	Taxi	Private	PLB	Goods veh.		Non	Fr. Bus	
		Cycle	Car		LB		Light	M & H	Fr. Bus	SD	DD
0700-0800	Pro	4.0	22.3	42.9	2.4	1.0	13.8	2.6	6.8	0.1	4.2
	Ocp	1.1	1.3	1.9	5.1	13.1	1.4	1.5	14.5	9.7	47.7
0800-0900	Pro	4.7	39.6	32.9	1.0	0.6	13.0	2.1	2.6	0.0	3.5
	Ocp	1.1	1.2	1.8	5.3	12.7	1.7	1.5	12.4	0.0	72.6
0900-1000	Pro	2.1	32.4	36.7	0.8	0.6	18.8	3.1	2.0	0.1	3.5
	Ocp	1.1	1.4	1.9	2.1	9.1	1.8	1.3	14.7	5.0	39.7
1000-1100	Pro	3.3	31.3	33.8	1.3	0.3	23.1	3.1	1.1	0.0	2.7
	Ocp	1.1	1.4	1.9	2.2	5.7	1.7	1.4	14.7	0.0	25.8
1100-1200	Pro	2.6	28.3	34.2	1.8	0.3	23.9	4.6	1.6	0.1	2.7
	Ocp	1.1	1.4	1.9	3.0	4.6	1.6	1.4	3.2	7.5	28.5
1200-1300	Pro	2.6	36.8	30.2	1.2	0.3	20.9	3.8	1.8	0.1	2.3
	Ocp	1.0	1.4	2.0	2.8	2.5	1.6	1.5	7.9	8.5	27.4
1300-1400	Pro	3.0	34.4	27.2	1.7	0.2	24.3	4.0	2.4	0.1	2.8
	Ocp	1.0	1.4	1.8	2.6	8.3	1.6	1.4	13.9	3.5	26.8
1400-1500	Pro	3.3	36.4	26.2	1.1	0.2	24.9	3.5	1.9	0.1	2.4
	Ocp	1.0	1.5	2.0	1.9	5.5	1.6	1.4	5.7	1.0	25.5
1500-1600	Pro	3.1	34.1	30.2	2.1	0.4	21.9	3.2	2.7	0.1	2.3
	Ocp	1.1	1.5	2.0	4.2	7.0	1.6	1.3	14.8	5.5	25.9
1600-1700	Pro	1.7	39.2	25.2	2.0	0.2	23.0	2.9	2.9	0.1	2.8
	Ocp	1.1	1.5	1.8	2.4	9.6	1.7	1.4	9.9	12.0	29.3
1700-1800	Pro	4.2	33.7	34.7	1.8	0.5	16.6	2.5	2.4	0.0	3.6
	Ocp	1.1	1.4	1.7	2.5	15.2	1.6	1.5	12.9	0.0	37.4
1800-1900	Pro	4.3	47.6	26.1	1.5	1.0	12.8	1.6	1.8	0.1	3.3
	Ocp	1.1	1.3	1.9	3.3	13.7	1.5	1.6	8.3	39.0	58.5
1900-2000	Pro	2.8	50.9	32.0	0.3	1.0	6.5	1.0	2.2	0.1	3.2
	Ocp	1.2	1.3	2.1	1.7	15.7	1.5	1.4	11.3	1.0	38.6
2000-2100	Pro	2.4	41.1	44.1	0.2	1.2	4.9	0.6	1.6	0.1	3.7
	Ocp	1.2	1.5	1.9	2.3	14.3	1.3	1.1	9.6	3.4	25.3
2100-2200	Pro	4.5	31.0	52.3	0.4	1.6	6.0	0.9	0.4	0.1	2.9
	Ocp	1.2	1.6	1.9	2.3	14.2	1.4	1.5	6.9	1.0	31.3
2200-2300	Pro	2.8	33.5	55.0	0.1	1.4	3.5	0.5	0.5	0.1	2.6
	Ocp	1.2	1.5	1.7	2.0	14.5	1.4	1.4	2.1	1.0	28.0
16 hours	Pro	3.2	36.0	34.8	1.2	0.7	16.4	2.5	2.2	0.1	3.0
	Ocp	1.1	1.4	1.9	3.2	12.3	1.6	1.4	11.5	5.6	37.4

Legend

- Pro.** Proportion of vehicles in % (Sum may not add up to 100% due to figure rounding)
- Ocp.** Average occupancy of vehicles
- M&H** Medium and Heavy