

YEAR 2007

CORE STATION 1022

ROAD NETWORK MAJOR

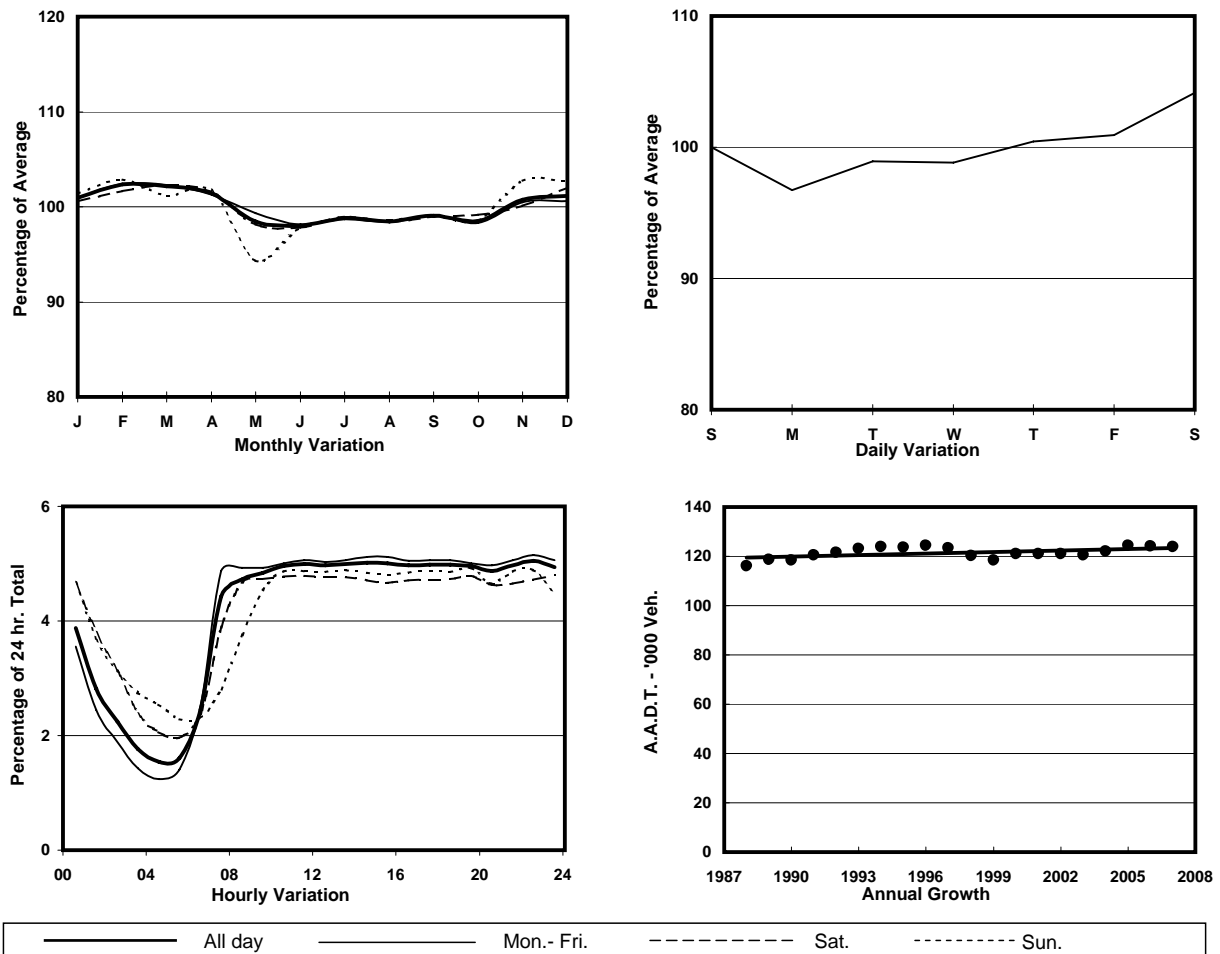
ROAD TYPE URBAN TRUNK ROAD

LINK CROSS HARBOUR TUNNEL (from TOLL PLAZA to SOUTH PORTAL)

6.8m 6.8m

N bound 2 lanes S bound 2 lanes

1. TRAFFIC FLOW VARIATION AND GROWTH



2. TRAFFIC CHARACTERISTICS (BY DIRECTION)

Parameter	All - Day	Mon. - Fri.	Sat.	Sun.
SOUTH BOUND				
A.A.D.T.	62910	62420	65360	62870
R 12 / 24 - %	59.8	61	57	56.7
R 16 / 24 - %	79.5	80.9	75.8	75.9
AM Peak Hour	0900-1000	0700-0800	0800-0900	0900-1000
One-way flow at AM peak hour	3140	3240	3200	3090
T - % (AM)	-	16.4	-	-
PM Peak Hour	1800-1900	1800-1900	1700-1800	1800-1900
One-way flow at PM peak hour	3130	3140	3120	3120
T - % (PM)	-	12.9	-	-
Prop.of commercial vehicles - 16 hr.	-	13.3	-	-
NORTH BOUND				
A.A.D.T.	60920	60360	63530	61060
R 12 / 24 - %	57.9	59.6	55	53
R 16 / 24 - %	78	80	73.8	72.4
AM Peak Hour	0900-1000	0900-1000	0900-1000	0900-1000
One-way flow at AM peak hour	2860	2910	2930	2530
T - % (AM)	-	18.5	-	-
PM Peak Hour	1600-1700	1600-1700	1600-1700	1600-1700
One-way flow at PM peak hour	3050	3080	3030	2940
T - % (PM)	-	16.8	-	-
Prop.of commercial vehicles - 16 hr.	-	14.1	-	-

3. OTHER INFORMATION AND COMMENT

4. Vehicle classification and occupancy - Monday to Friday

Time		Class of vehicle									
		Motor	Private	Taxi	Private	PLB	Goods veh.		Non	Fr. Bus	
		Cycle	Car		LB		Light	M & H	Fr. Bus	SD	DD
0700-0800	Pro	7.3	37.7	17.0	1.1	2.2	18.6	5.1	4.6	0.1	6.4
	Ocp	1.0	1.5	2.1	5.3	12.9	1.5	1.4	11.9	25.0	51.1
0800-0900	Pro	10.6	39.0	9.9	0.8	0.8	21.5	5.4	4.8	0.1	7.1
	Ocp	1.1	1.3	2.0	4.1	9.3	1.6	1.4	8.0	16.5	74.6
0900-1000	Pro	5.7	31.7	13.2	1.0	0.5	30.5	5.1	5.6	0.1	6.7
	Ocp	1.0	1.3	1.9	2.0	4.5	1.6	1.3	13.7	18.5	47.3
1000-1100	Pro	4.2	27.4	15.2	1.2	0.3	35.0	7.3	3.2	0.1	6.1
	Ocp	1.0	1.3	1.8	2.2	4.0	1.6	1.5	11.5	16.5	39.2
1100-1200	Pro	4.1	28.8	13.4	1.4	0.4	38.3	6.8	2.2	0.1	4.7
	Ocp	1.0	1.4	2.0	3.3	4.0	1.5	1.5	12.8	18.0	45.7
1200-1300	Pro	3.9	30.5	14.5	1.6	0.0	33.3	7.5	4.3	0.1	4.4
	Ocp	1.1	1.4	2.1	3.3	0.0	1.6	1.5	22.4	17.0	46.8
1300-1400	Pro	4.0	31.6	15.1	0.8	0.1	35.8	5.1	3.0	0.1	4.5
	Ocp	1.1	1.5	1.8	2.8	8.0	1.6	1.3	10.2	18.0	47.4
1400-1500	Pro	5.5	29.4	13.2	1.1	0.3	36.1	6.5	3.5	0.1	4.3
	Ocp	1.1	1.4	2.3	2.1	8.0	1.6	1.4	13.5	17.7	46.0
1500-1600	Pro	5.1	36.7	12.4	1.1	0.1	31.2	5.2	3.5	0.1	4.6
	Ocp	1.1	1.5	2.3	5.1	10.5	1.4	1.3	18.0	17.0	48.1
1600-1700	Pro	6.1	28.5	13.2	1.1	0.1	35.2	5.5	5.2	0.1	5.0
	Ocp	1.1	1.4	2.0	2.1	4.0	1.6	1.5	10.3	15.5	50.7
1700-1800	Pro	8.1	36.4	11.1	1.0	0.9	28.2	2.7	5.1	0.1	6.4
	Ocp	1.1	1.4	2.4	2.9	6.8	1.7	1.5	9.4	27.0	56.5
1800-1900	Pro	10.9	39.7	11.5	1.2	1.0	22.1	3.2	3.9	0.1	6.5
	Ocp	1.1	1.4	2.3	3.3	12.9	1.6	1.4	18.2	47.0	74.0
1900-2000	Pro	8.2	44.5	15.2	0.4	1.7	18.7	2.5	2.8	0.1	5.9
	Ocp	1.1	1.4	2.4	5.0	13.0	1.6	1.4	17.5	37.0	60.7
2000-2100	Pro	4.0	41.9	28.4	0.1	3.0	11.2	2.0	3.8	0.1	5.6
	Ocp	1.1	1.4	2.2	2.0	10.9	1.6	1.5	18.2	20.5	46.5
2100-2200	Pro	5.1	39.2	33.2	0.3	3.2	9.3	2.1	3.2	0.0	4.3
	Ocp	1.2	1.5	2.3	2.4	9.8	1.5	1.2	15.9	0.0	54.5
2200-2300 Peak hour	Pro	4.8	40.6	35.4	0.3	3.4	8.9	1.8	0.8	0.0	3.9
	Ocp	1.2	1.6	2.3	2.0	9.8	1.7	1.4	10.5	0.0	58.2
16 hours	Pro	6.0	35.2	17.2	0.9	1.1	25.8	4.6	3.7	0.1	5.4
	Ocp	1.1	1.4	2.2	3.2	10.1	1.6	1.4	13.8	20.2	53.6

Legend

- Pro.** Proportion of vehicles in % (Sum may not add up to 100% due to figure rounding)
- Ocp.** Average occupancy of vehicles
- M&H** Medium and Heavy