

YEAR 2007

CORE STATION 1025

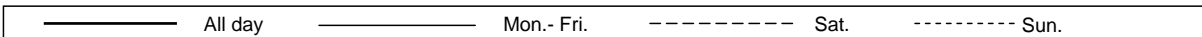
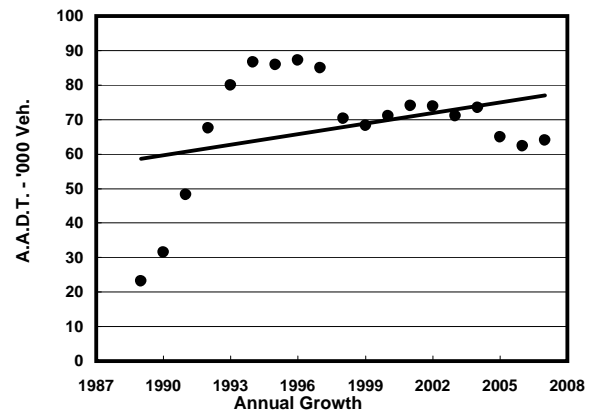
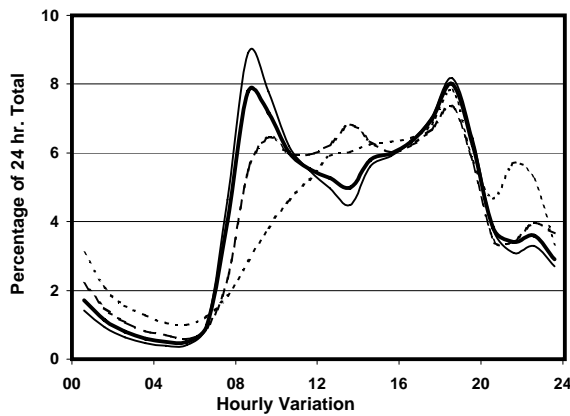
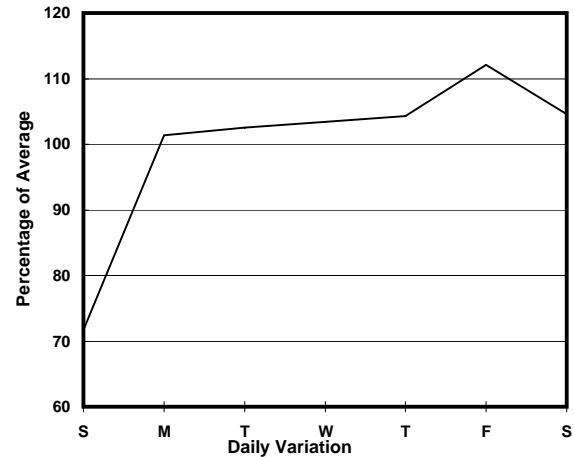
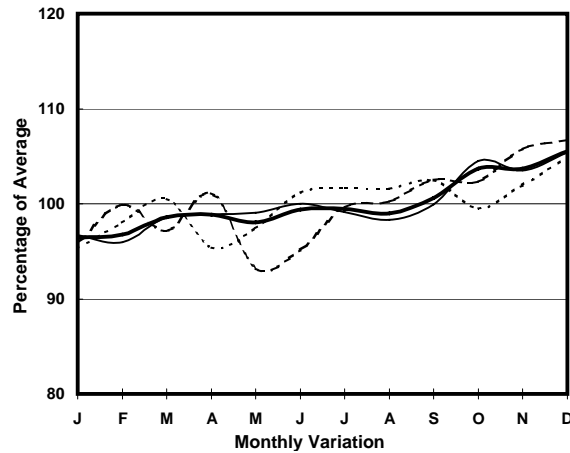
ROAD NETWORK MAJOR

ROAD TYPE URBAN TRUNK ROAD

LINK EASTERN HARBOUR CROSSING (from TOLL PLAZA to SOUTH PORTAL)



1. TRAFFIC FLOW VARIATION AND GROWTH



2. TRAFFIC CHARACTERISTICS (BY DIRECTION)

Parameter	All - Day	Mon. - Fri.	Sat.	Sun.
SOUTH BOUND				
A.A.D.T.	31350	33430	33230	22540
R 12 / 24 - %	76.1	77.9	73.9	65.5
R 16 / 24 - %	91.9	93	90.1	86.9
AM Peak Hour	0800-0900	0800-0900	0900-1000	0900-1000
One-way flow at AM peak hour	2660	3230	2550	980
T - % (AM)	-	11.8	-	-
PM Peak Hour	1800-1900	1800-1900	1800-1900	1800-1900
One-way flow at PM peak hour	2410	2600	2350	1780
T - % (PM)	-	5.3	-	-
Prop.of commercial vehicles - 16 hr.	-	7.5	-	-
NORTH BOUND				
A.A.D.T.	32690	34710	34790	23970
R 12 / 24 - %	71.6	73.2	70.2	62.5
R 16 / 24 - %	89.8	91.2	87.1	83.9
AM Peak Hour	0800-0900	0800-0900	0900-1000	0900-1000
One-way flow at AM peak hour	2320	2840	1850	790
T - % (AM)	-	5	-	-
PM Peak Hour	1800-1900	1800-1900	1800-1900	1800-1900
One-way flow at PM peak hour	2720	2960	2650	1860
T - % (PM)	-	5.3	-	-
Prop.of commercial vehicles - 16 hr.	-	6.9	-	-

3. OTHER INFORMATION AND COMMENT

4. Vehicle classification and occupancy - Monday to Friday

Time		Class of vehicle									
		Motor	Private	Taxi	Private	PLB	Goods veh.		Non	Fr. Bus	
		Cycle	Car		LB		Light	M & H	Fr. Bus	SD	DD
0700-0800	Pro	8.0	35.3	25.2	0.9	2.3	14.7	3.2	4.1	0.0	6.5
	Ocp	1.1	1.4	2.0	7.2	16.0	1.6	1.3	27.4	0.0	62.1
0800-0900	Pro	5.1	53.4	19.0	0.7	1.5	11.5	2.9	2.2	0.0	3.8
	Ocp	1.1	1.3	2.0	6.7	16.0	1.8	2.0	46.1	0.0	83.6
0900-1000	Pro	3.2	52.1	21.3	0.6	0.8	16.1	2.9	0.6	0.0	2.4
	Ocp	1.1	1.3	1.8	2.0	13.0	1.9	1.8	29.9	0.0	50.2
1000-1100	Pro	2.2	44.6	17.8	0.5	0.8	27.4	3.6	0.4	0.0	2.7
	Ocp	1.0	1.3	2.1	2.2	12.1	1.8	1.4	22.8	0.0	37.6
1100-1200	Pro	3.6	35.6	22.2	1.6	0.7	28.0	4.5	0.4	0.0	3.4
	Ocp	1.0	1.7	2.1	2.3	11.8	1.7	1.7	18.0	0.0	37.0
1200-1300	Pro	3.4	51.7	15.8	0.4	0.5	21.2	3.0	1.3	0.0	2.8
	Ocp	1.1	1.5	1.9	5.0	8.3	1.8	1.5	13.2	0.0	32.4
1300-1400	Pro	3.5	46.8	15.7	1.2	1.0	23.6	4.3	0.3	0.0	3.5
	Ocp	1.1	1.5	2.0	2.1	11.1	1.7	1.5	1.0	0.0	32.8
1400-1500	Pro	2.7	44.4	18.0	1.8	0.6	25.9	2.6	1.6	0.0	2.4
	Ocp	1.1	1.4	2.1	2.9	11.8	1.8	1.4	16.7	0.0	29.8
1500-1600	Pro	2.4	44.5	15.3	1.1	0.7	26.7	5.8	0.8	0.0	2.7
	Ocp	1.1	1.4	2.0	2.7	10.7	1.8	1.6	15.9	0.0	30.0
1600-1700	Pro	3.0	42.8	20.6	1.2	0.6	23.6	4.3	1.3	0.0	2.6
	Ocp	1.1	1.5	1.6	2.3	12.0	1.8	1.7	5.5	0.0	34.1
1700-1800	Pro	3.9	52.7	15.0	0.5	1.6	20.6	1.4	0.5	0.0	3.7
	Ocp	1.2	1.3	1.8	2.6	12.4	1.8	1.6	15.6	0.0	47.6
1800-1900	Pro	6.4	61.8	11.8	1.1	1.6	12.0	1.1	0.7	0.0	3.5
	Ocp	1.1	1.3	2.1	4.7	16.0	1.8	1.8	15.0	0.0	65.8
1900-2000	Pro	3.1	72.1	12.2	0.3	1.6	5.5	0.6	0.8	0.0	3.8
	Ocp	1.2	1.3	2.1	1.3	15.8	1.5	1.1	18.2	0.0	56.5
2000-2100	Pro	4.5	67.8	14.7	0.6	1.8	5.2	0.8	0.2	0.0	4.5
	Ocp	1.2	1.3	2.5	1.3	15.6	1.8	1.2	1.0	0.0	43.9
2100-2200	Pro	6.3	59.8	20.4	0.0	3.8	3.6	0.9	0.0	0.0	5.3
	Ocp	1.2	1.3	2.3	0.0	13.7	1.8	1.8	0.0	0.0	49.0
2200-2300	Pro	5.0	55.9	26.2	0.2	2.2	4.4	1.2	0.4	0.0	4.5
	Ocp	1.2	1.3	2.2	6.0	13.1	1.7	1.3	10.5	0.0	44.9
16 hours	Pro	4.0	51.8	17.7	0.8	1.3	17.2	2.7	1.0	0.0	3.4
	Ocp	1.1	1.4	2.0	3.3	14.0	1.8	1.6	24.6	0.0	50.4

Legend

Pro. Proportion of vehicles in % (Sum may not add up to 100% due to figure rounding)
Ocp. Average occupancy of vehicles
M&H Medium and Heavy